

Percentage of Household Waste Recycled

Why and how do we measure this data?

This data is collected using information from the waste recycling sites regarding the weights of the material received from the City Council.

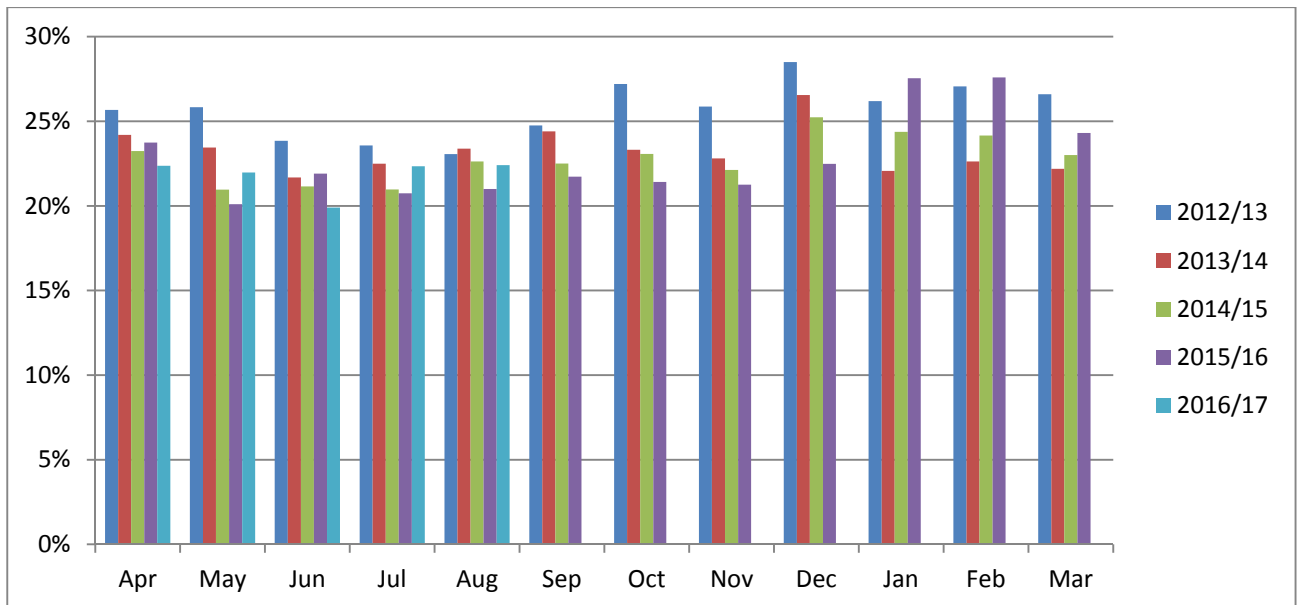
The percentage represents the amount of dry mixed recycling materials collected and when added to the composting rate provides the overall recycling rate for the District.

Further information on waster and recycling can be found [here](#).

What information can I see?

You will find the information below, both embedded in the web page, in this case as a spreadsheet and a chart, and also available to download in several formats at the bottom of the page which contain further historical data.

The information on this page is updated monthly, although only after the data has been validated by the Environment Agency which can take a number of weeks after the end of each month. The most recent data that is available is for August 2016.



	2012/13	2013/14	2014/15	2015/16	2016/17
April	25.67%	24.19%	23.24%	23.74%	22.37%
May	25.83%	23.45%	20.96%	20.10%	21.97%
June	23.84%	21.68%	21.15%	21.91%	19.90%
July	23.57%	22.49%	20.97%	20.74%	22.34%
August	23.06%	23.38%	22.62%	21.00%	22.41%
September	24.75%	24.40%	22.50%	21.73%	
October	27.20%	23.31%	23.07%	21.41%	
November	25.87%	22.80%	22.12%	21.25%	
December	28.50%	26.55%	25.23%	22.48%	
January	26.19%	22.07%	24.37%	27.54%	
February	27.06%	22.62%	24.16%	27.59%	
March	26.60%	22.19%	23.00%	24.31%	

Comments:

The recycling rate has fallen slightly in recent years and the City Council recognise the need for additional publicity campaigns to promote which materials can and cannot be collected.