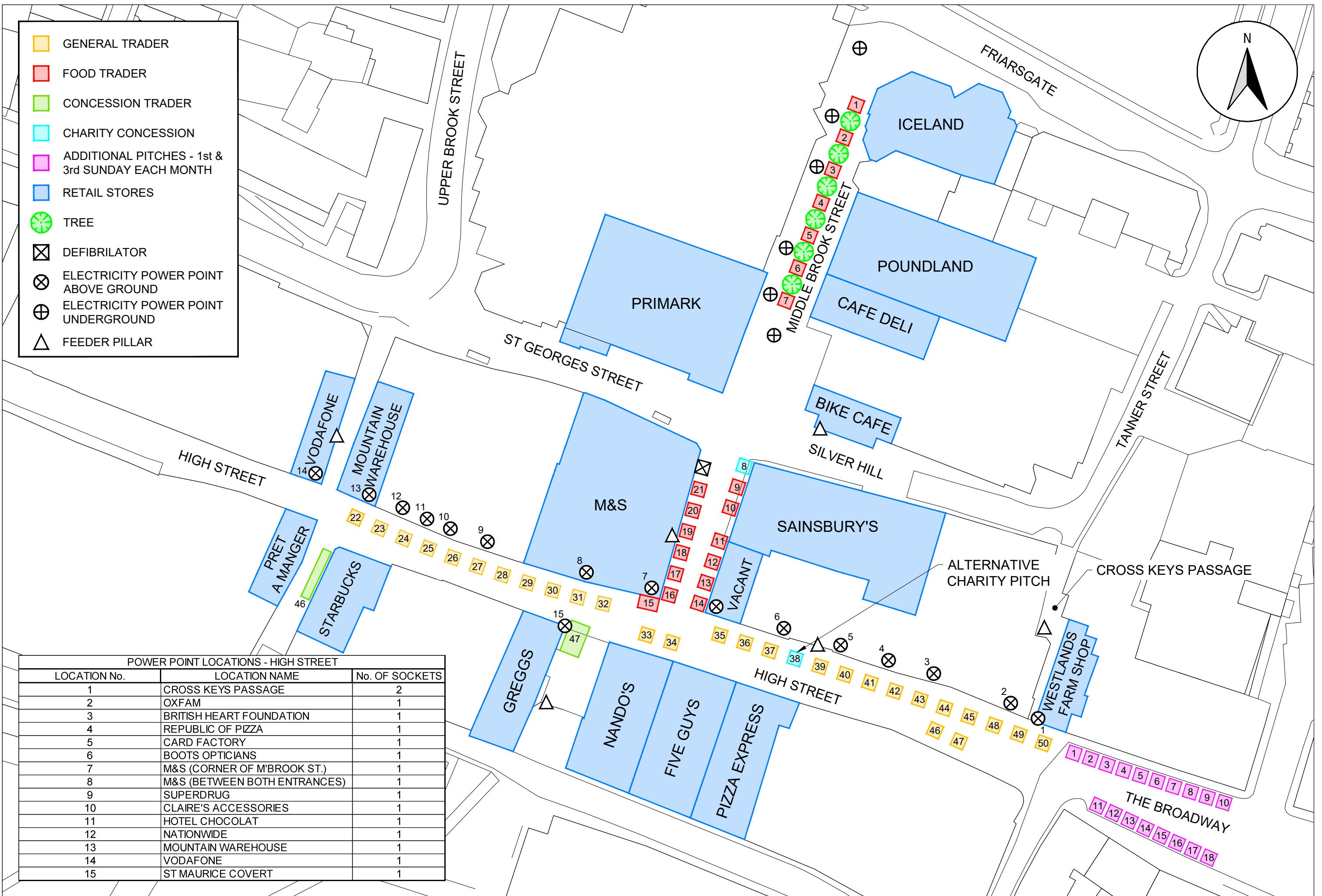
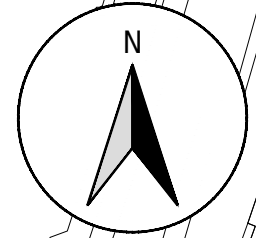


- GENERAL TRADER
- FOOD TRADER
- CONCESSION TRADER
- CHARITY CONCESSION
- ADDITIONAL PITCHES - 1st & 3rd SUNDAY EACH MONTH
- RETAIL STORES
- TREE
- DEFIBRILATOR
- ELECTRICITY POWER POINT ABOVE GROUND
- ELECTRICITY POWER POINT UNDERGROUND
- FEEDER PILLAR



POWER POINT LOCATIONS - HIGH STREET		
LOCATION No.	LOCATION NAME	No. OF SOCKETS
1	CROSS KEYS PASSAGE	2
2	OXFAM	1
3	BRITISH HEART FOUNDATION	1
4	REPUBLIC OF PIZZA	1
5	CARD FACTORY	1
6	BOOTS OPTICIANS	1
7	M&S (CORNER OF M'BROOK ST.)	1
8	M&S (BETWEEN BOTH ENTRANCES)	1
9	SUPERDRUG	1
10	CLAIRE'S ACCESSORIES	1
11	HOTEL CHOCOLAT	1
12	NATIONWIDE	1
13	MOUNTAIN WAREHOUSE	1
14	VODAFONE	1
15	ST MAURICE COVERT	1