

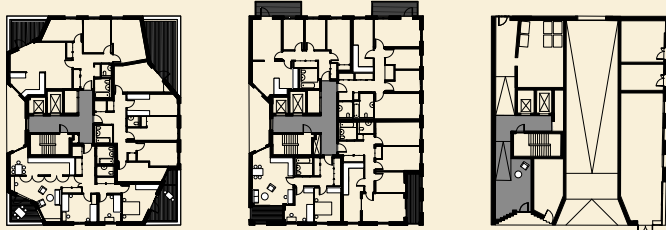
1. Architecture and Landscape Team



Henley Halebrown Architects Copper Lane; Chatto, Taylor and Wilmott Courts

East

East is an award-winning architecture, landscape and urban design practice. They work on a wide range of projects, including housing, masterplans, community and workspace buildings and public spaces, all aimed at enabling places to be positively experienced, environmentally sustainable and accommodate diverse needs. Based in east London, they have an international reputation for designing in the specific context of places, and have worked extensively across the city, as well as throughout the UK and Europe since they started practicing in 1995. The directors of East are Julian Lewis, Judith Lösing and Dann Jessen.



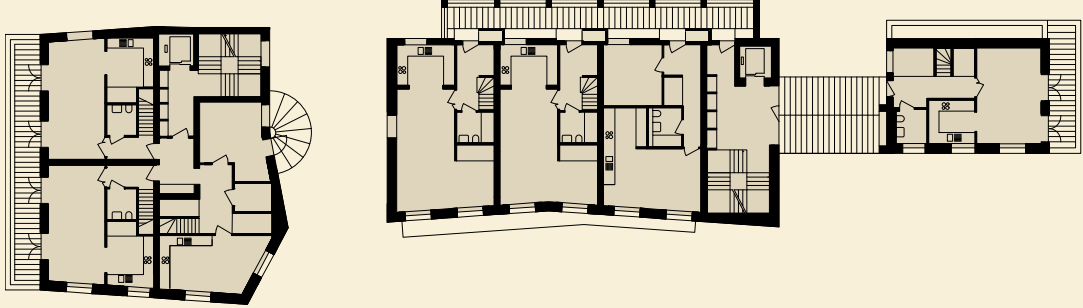
East Architects: Bream Street Housing, Flaxyard Housing, Eltham High Street



Peter Barber Architects: Edgewood Mews, McGrath Road , Rochester Way

Henley Halebrown Architects

Established in 1995, Henley Halebrown has evolved from a practice working on a range of interiors, exhibitions and domestic commissions to completing award winning education, healthcare, residential, commercial and arts buildings as well as “adaptive reuse” projects. They have been named Healthcare Architect of the Year in 2008, Public Building Architect of the Year in 2011 and Housing Architect of the Year in 2021.



Peter Barber Architects

Peter Barber Architects are an award-winning design-orientated Practice with a particular expertise in delivering high quality, exemplar residential led schemes in complex urban and suburban sites, working in close collaboration with Planning Authorities, Design Teams and local Communities.



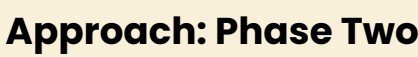
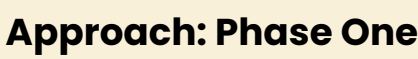
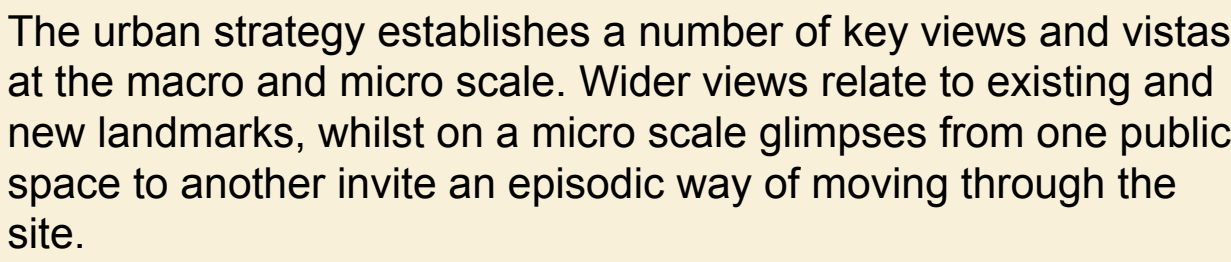
2. Winchesterness



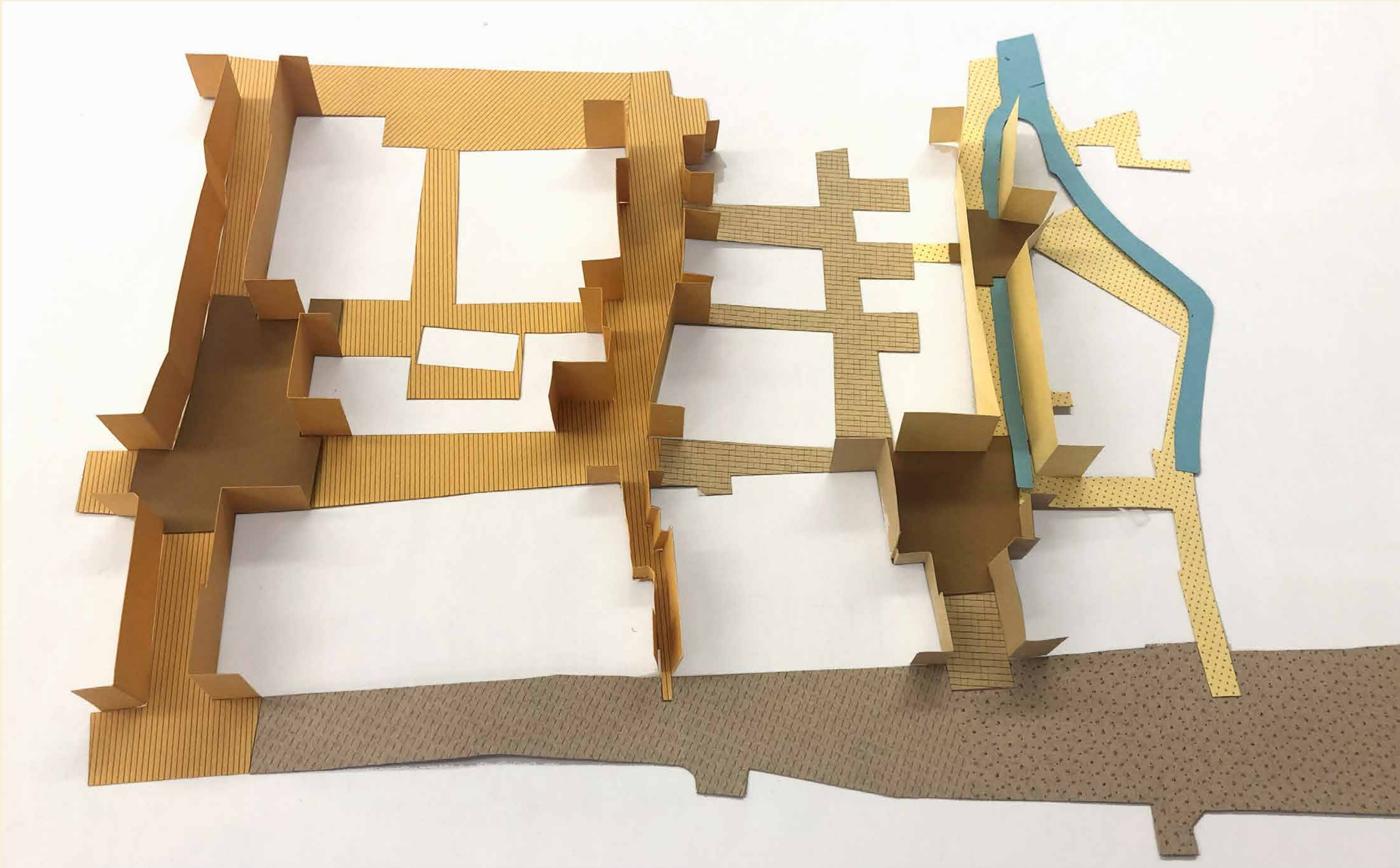
Heritage



2.



3. Designing Spaces and Buildings Together



Intimate green spaces with planting for localised privacy allows for very fine grained street widths to support social spaces



Hard wearing civic paving – a public square also serving as an arboretum, that accommodates a variety of uses including servicing for large vehicles out of hours.



Civic square with mature trees and formal and informal seating



Residential front doors raised at 'stoops' to give an elevated view of the street, lined with trees



Revealing and reinstating the cities historic relationship with water



Green zones with seating, planting and play can create human scale social spaces in larger monumental-like streets

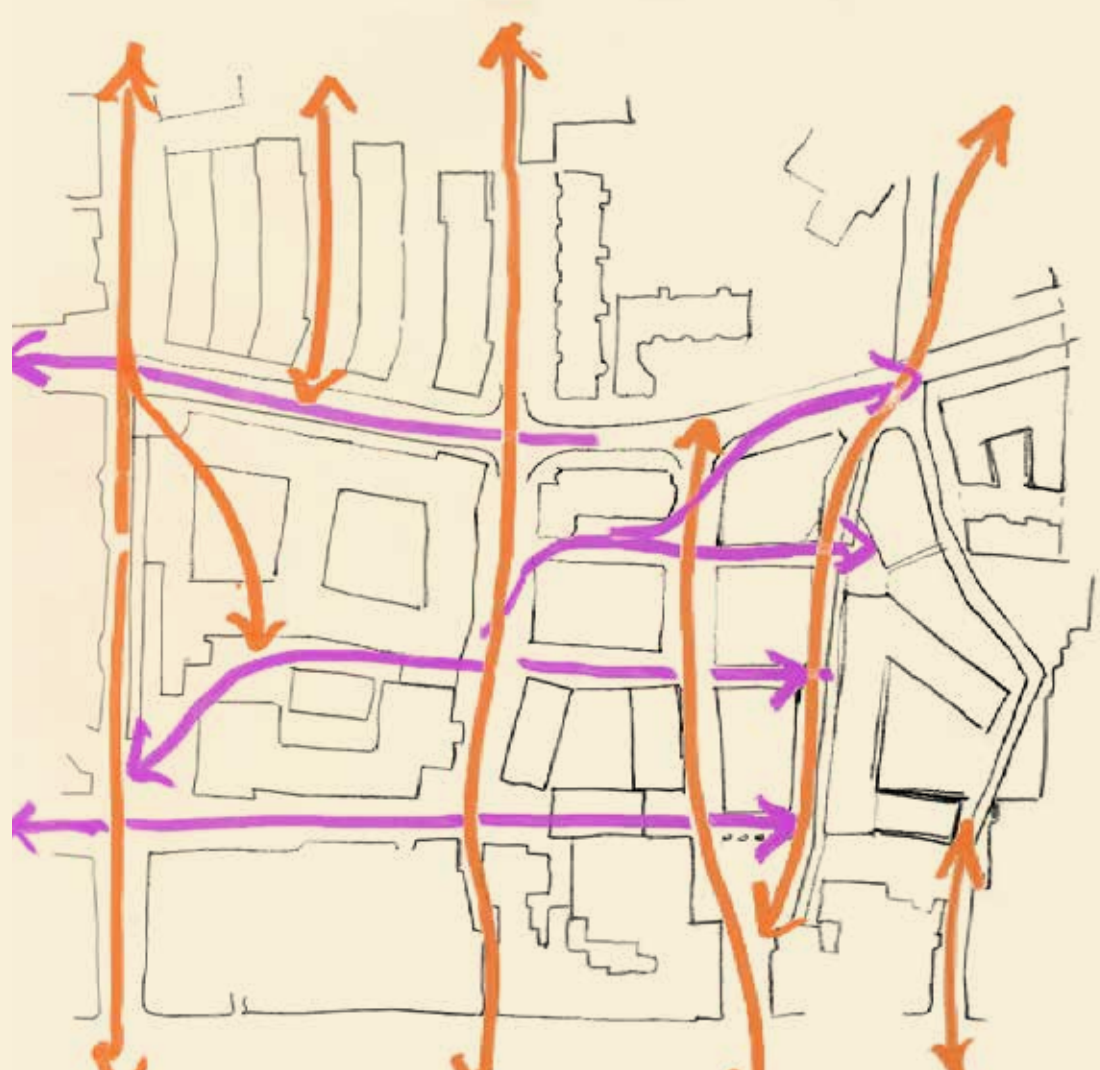
4. Jigsaw



Building Blocks – these are quite literally the “blocks” from which we will “build” or rebuild the centre of Winchester. Each will be designed to accommodate a certain amount of activity and at the same time be an appropriate scale



Thoroughfares – shows the network of streets and passages – the public spaces – that people will inhabit and experience



Routes and Connections – these stitch the centre of Winchester back together, forming part of a wider and continuous network within greater Winchester



Creating small public spaces – where streets and passageways converge our proposals create a variety of small informal public spaces, creating contemporary versions of The Square and the Buttercross



Views and visual connections – shows the masterplan as a series of vistas and visual cues, enabling people to orientate themselves and navigate the passageways, streets and squares



Characteristic skyline – the buildings and facades that line these new streets will characterise the place. Looking around people will enjoy a mosaic of different silhouettes and roofs, and the patterns of materials from which they are made

5. Jigsaw Pieces



Riverside Walk



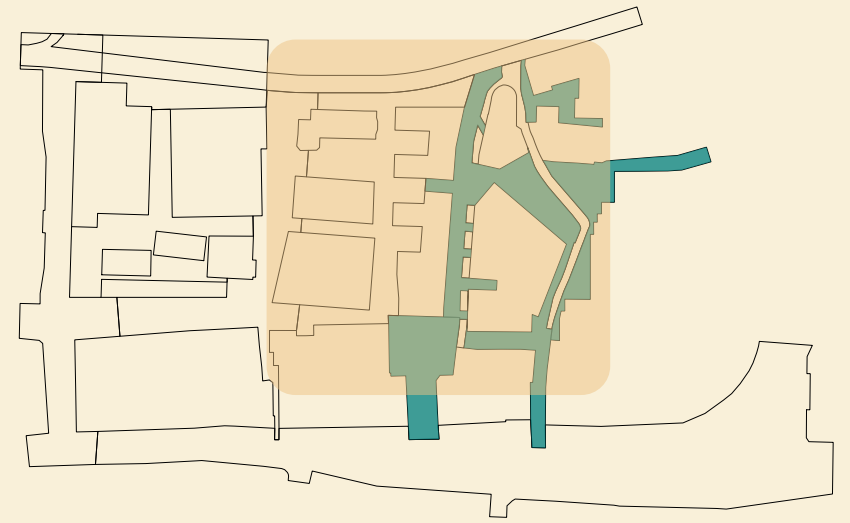
Palais De L'île in Annecy



Platforms that extend over the water encourage access and bring it to the forefront as a component of the public realm



Palazzo delle Poste e telegrafi in Piazza Bologna, Rome



Seating could have compatible arrangements to allow for buses and pedestrians to move freely



Carriageway crossings are part of the public realm too; make them focussed on enabling pedestrian access



Blending uses in close proximity should be done with care in urban streets; the above shows young childrens play, residential uses and town square activities



Sketch looking South along Middle Brook Street from Friarsgate showing the reinstated view to the cathedral



Middle Brook Street



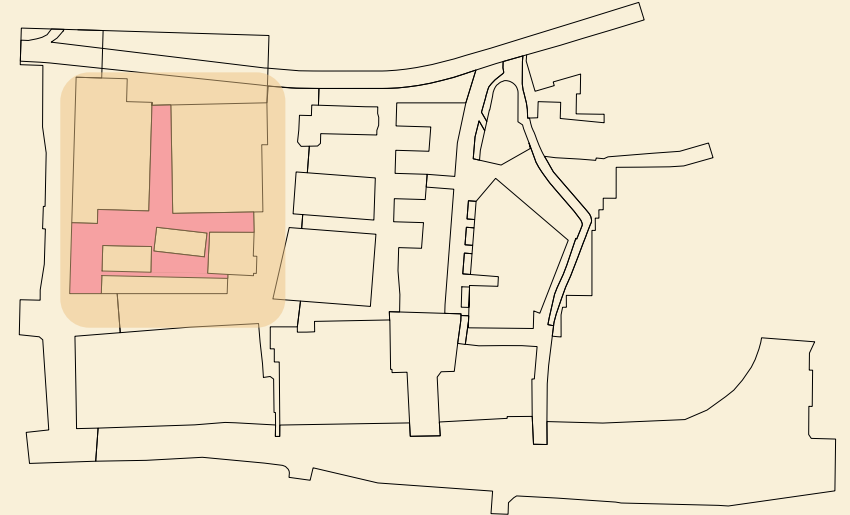
When the market is not on, the spaces can offer peaceful places to be in Winchester



Using ways to bring green into the spaces and also to accommodate bicycle parking as urban civic furniture



Antiques market uses work well in places where visitors can walk around at their leisure, in loops



6. Next Steps

