

HAB Housing



HAB's first completed project – the Triangle in Swindon – was delivered in partnership with the housing association GreenSquare Group.



Applewood in Stroud was also delivered with GreenSquare. New build homes have been designed to complement refurbished historic buildings.



Children enjoy tending the communal kitchen garden at the Triangle by using recycled water from an old-fashioned pump.

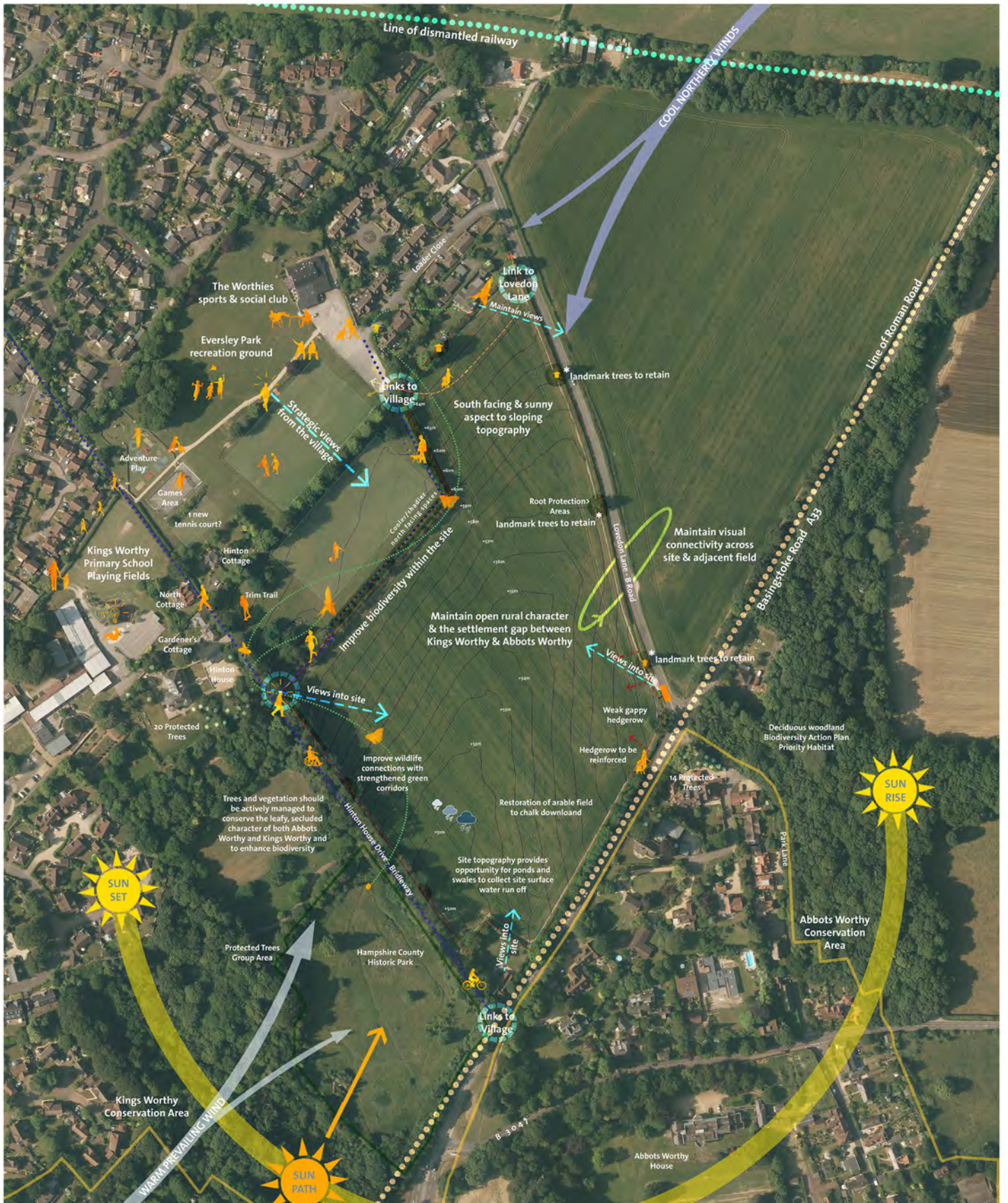


An Applewood living room: all HAB homes enjoy generous floor-to-ceiling heights and a direct relationship between internal and external space.

HAB Housing was established by Kevin McCloud in 2007 with the express aim of delivering housing projects that respect the local context and biodiversity; are strongly rooted in history and the community; and are sustainable, beautiful and a pleasure to live in.

We are working with the landowners, B|D landscape architects and John Pardey Architects to develop the best possible approach for the site at Lovedon Lane in Kings Worthy. We are committed to achieving the highest levels of sustainability and maximising the use of solar energy. Following consultation with the local community the scheme will deliver a range of new and improved sports and recreation facilities as part of the wider scheme.

Thoughts on the site



Option 1

A



Terraced allotments

B



Ponds and swales with natural play

Option 2

A



Football pitch with 1:3 banks to either side

B



Bike park and natural play

What would you like here?

allotments



orchards



cycle and footpaths



running track



bike park



tennis court



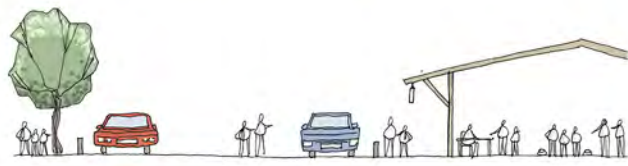
adventure play



natural play



community hall



boules



woodland enhancement



enhance biodiversity



natural ponds and swales



sustainable urban drainage



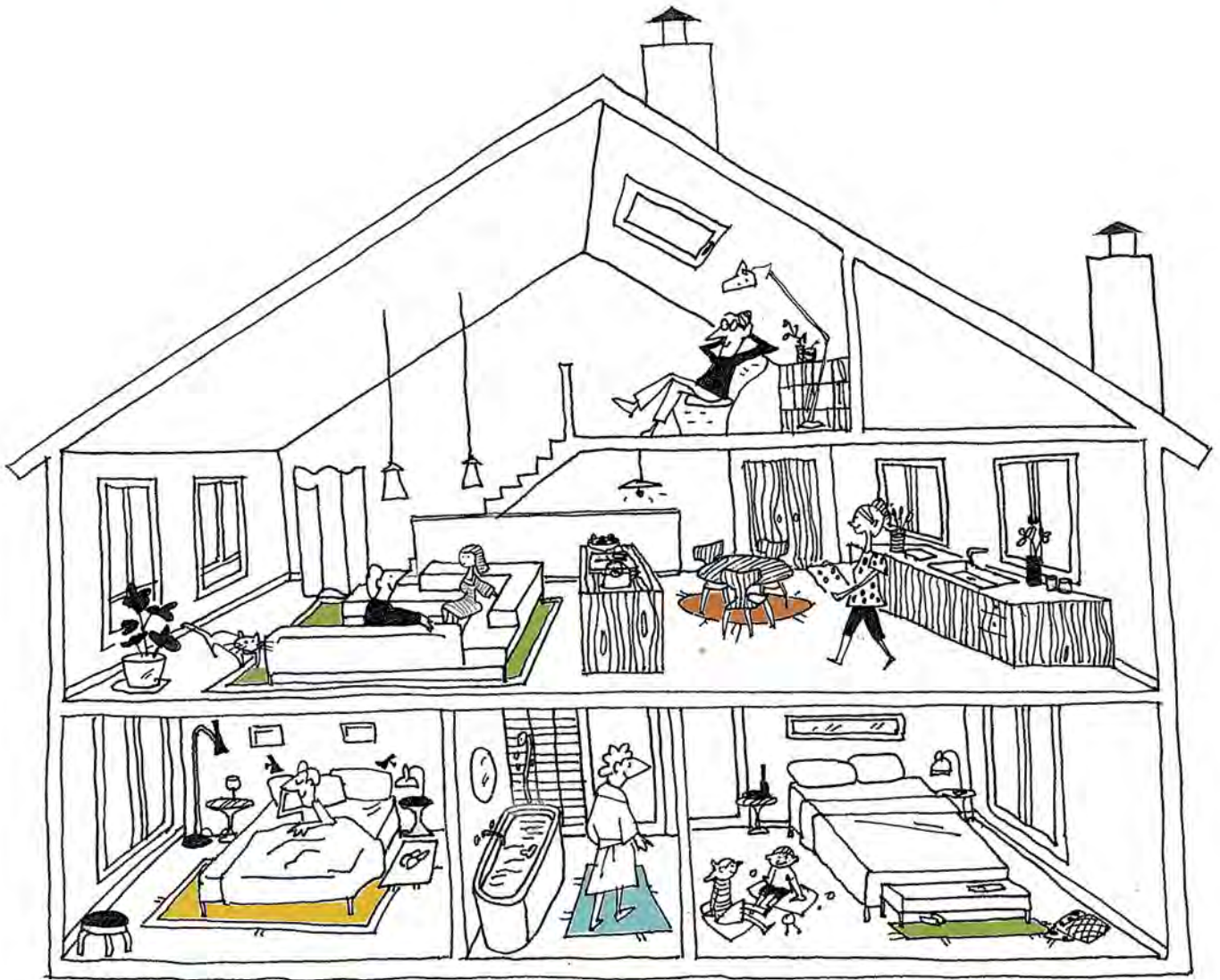
Make It Yours



Traditionally, house-builders offer customers a house and say 'lump it or leave it'. Our preferred approach is to work with potential owners to establish what it is they really want to buy. We can therefore tailor layouts and finishes to meet individual needs.

Hence we've developed our custom build portfolio: a 'kit of parts' that allows the house-buyer to purchase a base product at an affordable price and to add on extra elements to suit their taste, family, hobbies and needs.

How do you want to live?



All of our house types can be configured in a range of ways from fully open-plan living to defined rooms and spaces. And you can choose either the conventional arrangement of living space at ground floor or 'upside down' living to take advantage of natural light.



----- Eversley Park
——— Hinton Field

