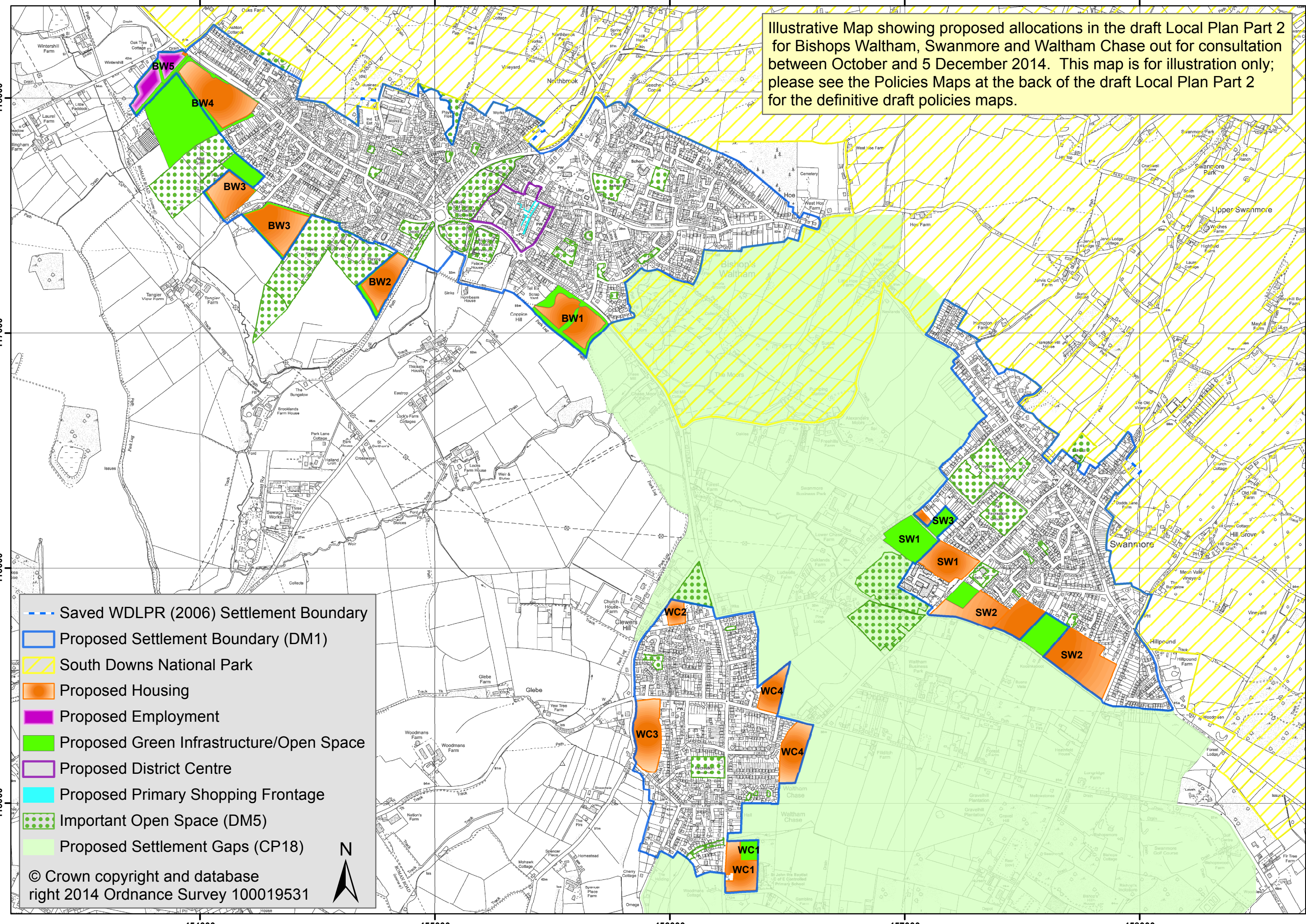


Illustrative Map showing proposed allocations in the draft Local Plan Part 2 for Bishops Waltham, Swanmore and Waltham Chase out for consultation between October and 5 December 2014. This map is for illustration only; please see the Policies Maps at the back of the draft Local Plan Part 2 for the definitive draft policies maps.



- Saved WDLPR (2006) Settlement Boundary
- Proposed Settlement Boundary (DM1)
- South Downs National Park
- Proposed Housing
- Proposed Employment
- Proposed Green Infrastructure/Open Space
- Proposed District Centre
- Proposed Primary Shopping Frontage
- Important Open Space (DM5)
- Proposed Settlement Gaps (CP18)

© Crown copyright and database right 2014 Ordnance Survey 100019531



454000 455000 456000 457000 458000

118000
117000
116000
115000