



COMMON VOICES

You spoke. We listened. The 'Common Voices' initiative aimed to establish local interest in shaping the future of our village. Colden Common Parish Council (CCPC) held face-to-face discussions with a cross-section of residents from all demographics.

Developed by the community for the community, this document summarises the outcome of these discussions and helps us create a realistic Parish Council-led plan. Further consultations will take place in 2023 to enable us to develop a 5-10 year plan for CCPC, to help focus budget discussions, prioritise resources and competing decisions, and identify short, medium and long-term projects based on community views.

The long-term goal is to improve the quality of life within our community so that Colden Common continues to be a vibrant, resilient and sustainable village for everyone.

We have proposed an action plan for each of the five main areas of interest:

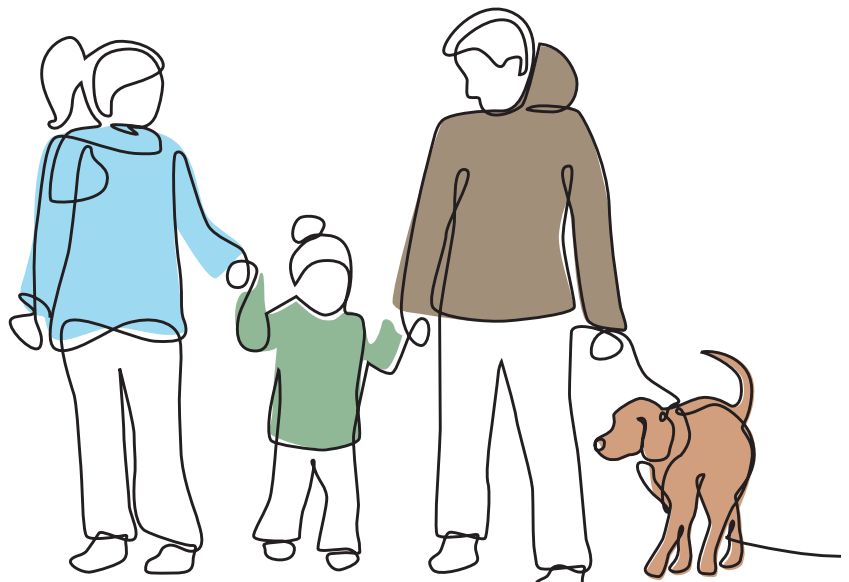
1 Independent Living

2 Safety

3 Community Cohesion

4 Village Status

5 Climate Emergency



Colden Common
Parish Council

1 Independent Living

To provide organisational support to alleviate associated issues with those residents that need assistance with independent living.

1a: To support organisations within the village such as Community Care Trust that help improve residents' ability to live independently.

- Allocation of grants to voluntary organisations that provide support services, for example: Citizens Advice; Youth Workers; Young Carers.
- Help publicise a range of services through CCPC communication channels.
- When requested by voluntary organisations, to assist in lobbying relevant organisations to aid the sustainability of their mission.

1b: To perform a yearly Accessibility Audit.

For example:

- Inviting residents with mobility issues to work with the CCPC on the audit.
- To lobby for access improvements for pushchairs, wheelchairs, and mobility scooters, and for those who have sight impairments.
- To communicate the issue of the impact of pavement parking and overgrown hedges on those with mobility problems.

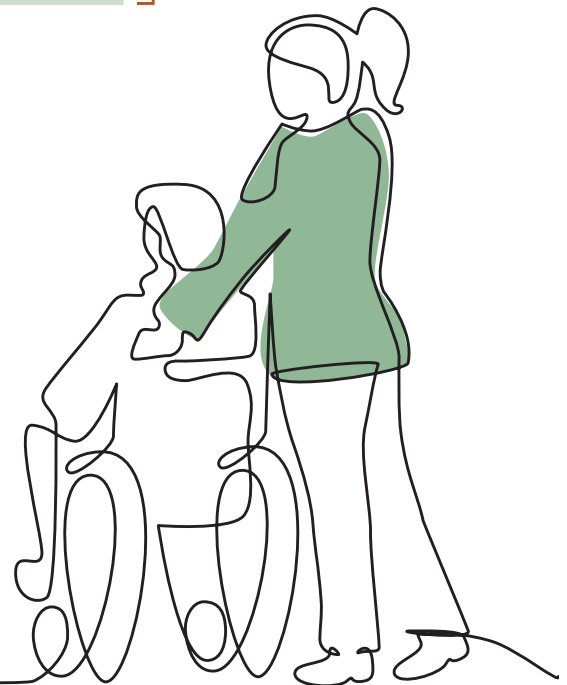
1c: To work with residents and Hampshire County Council (HCC) to improve the bus service in line with Local Transport Plan 4 (LTP4).

Lobby local HCC representatives where a demand for improvement is raised by residents.

1d: To support the need to increase Colden Common surgery services and appointment availability.

Parish Councillor representative on the Patient Participation Group ensures residents views are represented.

We will work with other organisations and individuals to improve independent living within our community.



2 Safety

To make our village a safer place to live.

2a: To support HCC LTP4 rural transport policies to reduce the dependency on the car.

Lobby and work with the Colden Common and HCC elected representatives to improve: **Bus services; Cycle lane improvements and routes** between Colden Common, Eastleigh and Winchester; Explore and lobby for **new footpath links** to connect Colden Common, Otterbourne, Southdown National Park, and Winchester.

2b: To support HCC LPT4 to reduce the impact of the car.

- To work with HCC regarding **traffic speed**.
- To work with Colden Common Primary School and the HCC school safety team on their transport plan to **reduce the drop-off and pickup problems outside the school**.
- Continue to ensure **Vehicle Activated Signs** are strategically placed within the village.
- To work with HCC on **traffic calming measures** in the vicinity of Colden Common Primary School.
- Continue to support **Speed Watch** with appropriate equipment to aid the efficiency of reporting speeding cars.

2c: Encourage all crimes of anti-social behaviour incidents to be reported on the Hampshire Police website or 101.

- Provide regular updates via village information system and social media.
- Support **Neighbourhood Watch** volunteers in the village.

2d: The CCPC to have zero tolerance to graffiti and vandalism.

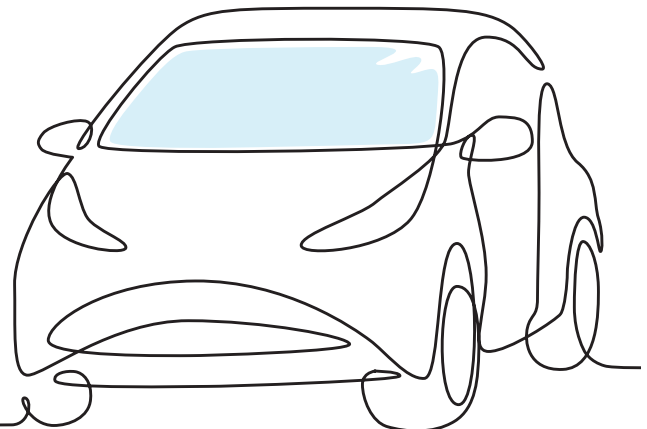
Report graffiti to the relevant authority for its removal.

2e: Investigate crime prevention and community safety measures.

Work with the local constabulary and PCSO, consider the feasibility of high definition CCTV with movement triggering at critical locations.

We will work with HCC in line with LTP4 to reduce traffic issues.

We will work with other organisations to make our village safer.



3 Community Cohesion

Protect and improve village cohesion to strengthen community quality of life.

3a: To support a tactical solution for the provision of a café facility on a pilot basis.

A resident has invested in a community based mobile pop-up café at the recreation ground. Data from this pilot would help towards the feasibility of developing a purpose-built facility if the tactical solution indicated viability.

3b: To consult with the community and business organisations to further understand post-pandemic working from home needs.

- Conduct a survey, understand the needs and feed back to the community.
- Consider the impact on cohesion and whether a café/coffee facility would also address these needs.

3c: To consult with young people (13-18) in the village to understand their needs and work with partners to deliver appropriate services.

- Carry out consultation with younger members of the community.
- Review the feedback and consider whether the provision of a cafe/coffee space could also service their needs.

3d: Establish requirements for a café/coffee facility that enhances community cohesion.

Documented set of requirements that have been feedback to the community.

3e: To investigate various village locations/repurposing options that could be used for a purpose-built café/coffee shop. To include whether a community space could be provided within the development of sites put forward in the Winchester District Council's emerging Local Plan 2018-2039.

Provide a list of possible sites and repurposing that would be required to locate a coffee shop/café at each site. The facility would also serve as a drop-in hub for villagers working from home, and young people (13-18) if 3b and 3c determined that need.

3f: Determine funding feasibility, funding sources and implementation.

Obtain costings of the options, consider planning implications and funding sources to enable implementation.

We will work with the community to establish a viable café/coffee shop facility within the village.



3 Community Cohesion *continued...*

3g: To identify and support organisations and businesses that aim to enhance the cohesion of the community and support this strategy.

Support is available through CCPC's grant process and lobbying support etc, for any organisation that needs external assistance in support of its aims.

3h: To support organisations that aim to be inclusive and sustainable.

Ideally, CCPC would welcome organisations that have a constitution that have a statement about how it approaches inclusivity, and sustainability such that it is viable over the long term.

3i: To lead a review with the community on how to improve the recruitment of volunteers.

- New approach and objectives achieved through consultation activities with the community, organisations, and local businesses.
- Work with community volunteer groups to support new ways of attracting and retaining volunteers.

3j: To implement the recommendations arising from the volunteer review.

New approach established and monitored.

3k: To establish a database of volunteer vacancies and roles

CCPC website to host a vacancies page listing all the vacancies for volunteer roles in the village.

We will work with village organisations and the Community Centre.

We will work with the community to achieve volunteer sustainability.



4 Village Status

Protect and improve the village as a village.

4a: CCPC to play an active role in lobbying Winchester City Council (WCC) for infrastructure improvements in the Local Plan 2018-2039.

Ensure the consultation for the Local Plan 2018-2039 is publicised in the village, and residents encouraged to give their views.

4b: Lobby WCC to include the CCPC in any outline planning discussions for Local Plan 2018-2039 allocated sites in the village.

- Highlight changed demographics in the village.
- Lobby for appropriate housing stock to attract younger age groups.

4c: Protect what we have environmentally.

Review and maintenance of open spaces to be done regularly. When issues are raised in areas outside the responsibility of CCPC, they are pursued / directed to the relevant organisation/land owner. Village organisations are supported that directly focus on this objective.

4d: Tree Planting Programme.

- Continue tree planting on CCPC land to reduce the impact on the landscape and environment caused by Ash Dieback.
- To investigate with local land owners if any land in the Parish could be dedicated for tree planting.
- To investigate with local land owners if any land is available for allotment plots.

4e: Reduce the risk of roads that flood and impact housing, safety and river pollution.

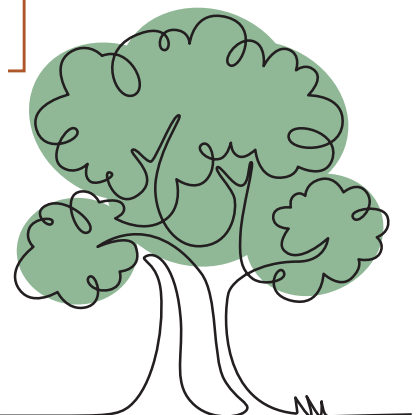
With help from residents, identify areas and roads that are at risk of flooding and lobby relevant organisations to ensure issues are addressed, and drains and roads are regularly cleaned.

4f: Determine Pollution Levels.

Lobby District and City Councils for pollution monitoring equipment to assess levels of pollution in Colden Common. Identify any remedial actions if required.

We will work in partnership with WCC to minimise the impact to the community cohesion as a result of village expansion.

We will work with residents, local land owners, HCC and WCC to address environmental issues and protect and improve the environment.



5 Climate Emergency



Declare a Climate Emergency based on a Credible Implementation and Support Programme.

5a: Establish a Village Special Advisory Group of Experts for Emergencies (SAGE).

Work with an identified team of experts to advise CCPC and other groups in the village on Climate Change initiatives and plans.

5b: Transition the current CCPC Common Voices workgroup to the Strategy Group Workgroup accountable for the Council Climate Change Programme.

A programme of changes to CCPC assets is to be established by the workgroup that reduces the Carbon Footprint and energy consumption.

5c: Existing Builds and New Developments.

Support the low carbon and carbon neutrality policies in the Winchester District Council's emerging Local Plan 2018-2039.

5d: Conduct a survey to understand what carbon saving infrastructure is required to support our community.

Survey to cover but not limited to: Charging Points; Shared Car Club; Tree Planting; Wilding; Work Hub; Cycling and Cycle Lanes; reducing the impact of Car, and Bus Services.

5e: Analyse the survey feedback and, based on advice from the SAGE group, the CCPC to establish a prioritised programme for implementation.

Programme documented, and to be published for Village consultation. Amendments to be made based on consultation feedback and programme ready for implementation.

5f: Establish funding sources.

Programme to be implemented.

We will seek advice and guidance from residents and others on the village journey to 'net zero' by 2050 or earlier.

We will support and adopt the Local Plan's Climate Change Policies and lobby as necessary.

Based on further village feedback, we will determine additional infrastructure that would support further carbon reductions.



5g: Examine buildings, finances and resources used in the operational running of the CCPC for reductions in Carbon Footprint, and review investments related to fossil fuels.

List of measures to be documented that can be taken for consultation with Parish Councillors. Measures to be published to residents. Timescale to be agreed.

5h: Produce and action a plan to implement the measures.

Measures implemented to agreed timescale.

5i: Support networking in the village in relation to individual and collective climate change goals and activities.

- Signpost to support sources, mentors, lobby organisations and grant funding.
- CCPC will provide assistance to voluntary organisations with funding applications, and lobbying if requested.

5j: CCPC workgroup works with the SAGE and other knowledgeable organisations to publish sources of information to reduce impact of climate extremes.

Information sources to be obtained and published.

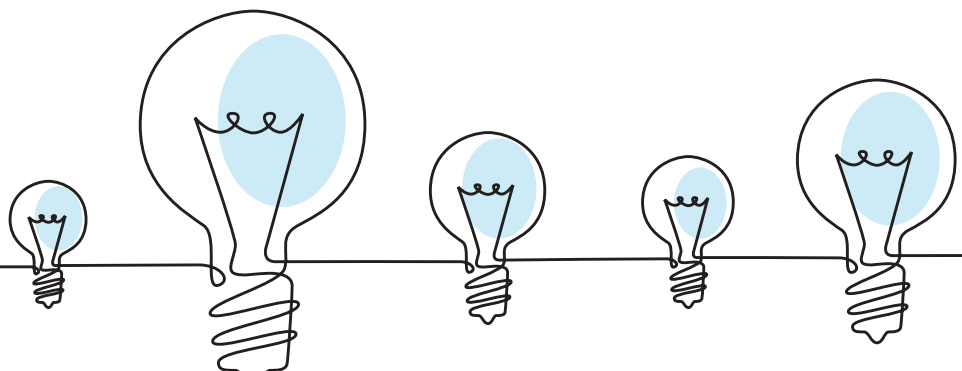
5k: With help from villagers, the CCPC will endeavour to support residents who may be impacted by changes in climate (extreme heat and cold) and who seek advice.

Vulnerable residents and support organisations to be identified, and provided with advice.

We will review the CCPC Operation and Capital Estate to determine reductions in carbon footprint.

We will help mobilise and support residents that wish to take individual actions to act on climate change.

With guidance from SAGE, we will provide sources of advice and support to villagers regarding the impact of changes to the climate.



Colden Common Parish Council want your feedback on the proposed action plan. It would be helpful if you could provide us with your views and feedback regarding the objectives, which will help prioritise our time and resources.

To have your say and to support your Parish Council, please complete the consultation document available on our website:

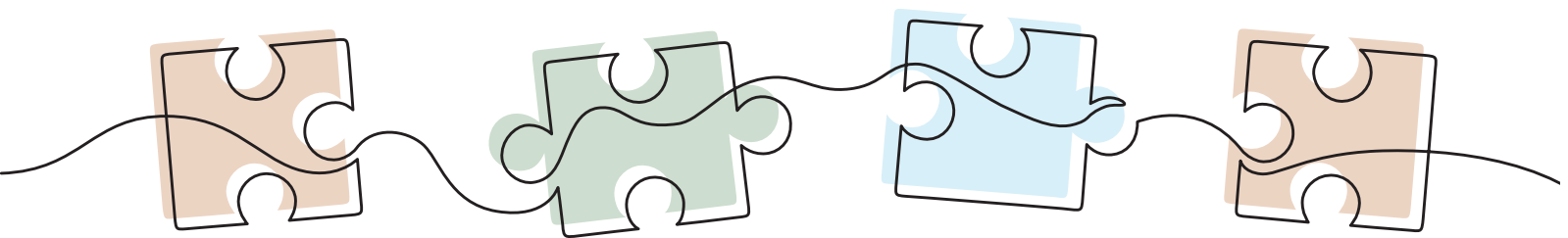
www.coldencommon-pc.gov.uk

Or via email upon request from the Parish Clerk:

clerk@coldencommon-pc.gov.uk

Hard copies are also available from the Parish Office at the Community Centre.

With your feedback, you can help shape your community's future.



Colden Common Parish Council
Parish Office
Community Centre
St Vigor Way
Colden Common
Winchester SO21 1UU

www.coldencommon-pc.gov.uk

clerk@coldencommon-pc.gov.uk

01962 713700 / 07775 627131