

Diagram showing the internal layout of an Atlas Florida M Home, the changes made, and photos showing some of the works

Diagram A.
Floorplan of 2001 Atlas Florida - Centre Lounge.
Perimeter and interior walls from 1" x 1" studs.

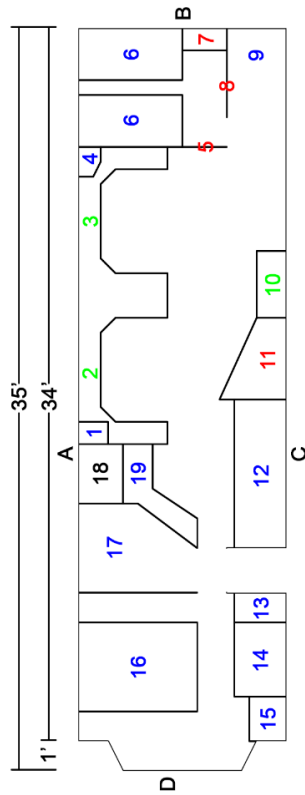


Diagram B.

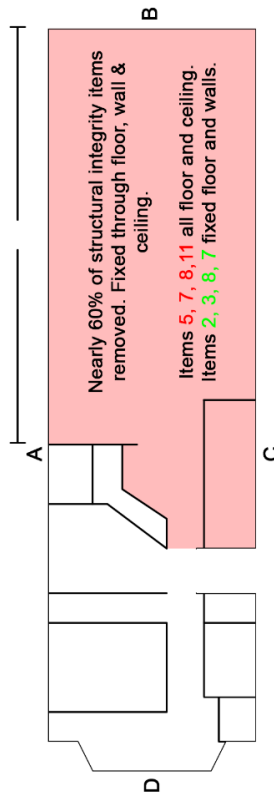
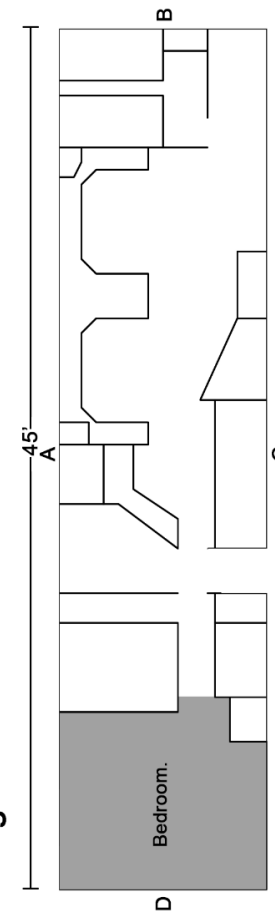


Diagram C.



Key.

1. Overhead cupboard.
2. Pullout double bed.
3. Seating area.
4. Corner display unit.
5. Bed / lounge wall.
6. 2 x Single beds.
7. Wardrobe.
8. Bedroom / toilet wall.
9. W.C + Handbasin.
10. T,V unit.
11. Fire breast.
12. Sink / fridge units.
13. Boiler cupboard.
14. Fitted wardrobe.
15. Vanity unit.
16. Double bed.
17. Bathroom & W.C.
18. Shower cubicle.
19. Cooker / kitchen area.

All interior items 1st fixed from inside at pre-determined points, then fixed with 60mm pneumatic staples to gain structural rigidity prior to weatherproof aluminium sheeting.

New dimensions with bedroom extension, external insulation & cladding 44' 11" x 11' 3"

APPENDIX HG 10

Diagram showing the internal layout of an Atlas Florida M Home, the changes made, and photos showing some of the works

Two photos of an original Atlas Florida Mobile Home



Looking towards the lounge with the bedroom and toilet at the far side (Diagram A)



APPENDIX HG 10

Diagram showing the internal layout of an Atlas Florida M Home, the changes made, and photos showing some of the works

Looking towards the kitchen area with main bedroom beyond

Two Photos showing works in progress at the Greenhouse (2010).



View of the Mobile Home at The Greenhouse where the bedroom and toilet had been removed with new stud wall being constructed



View looking towards the kitchen area before it was revised.

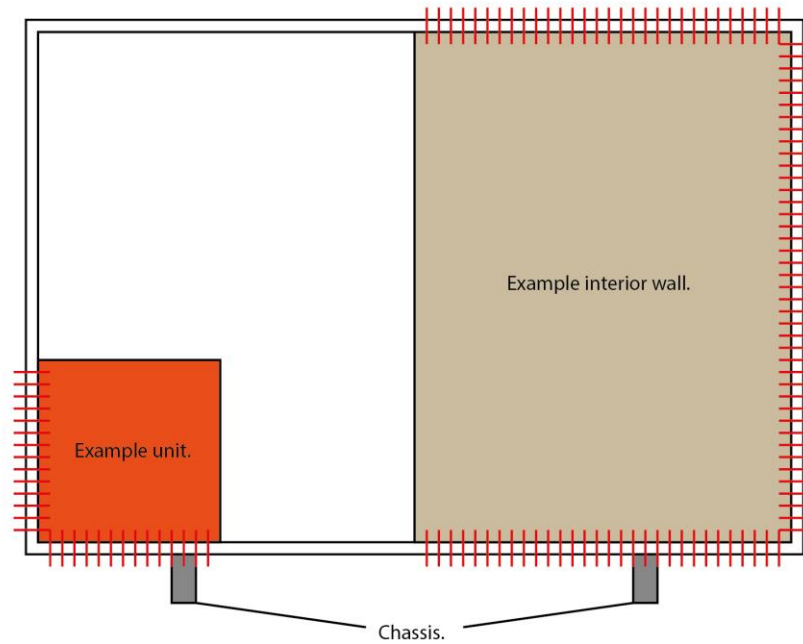
APPENDIX HG 10

Diagram showing the internal layout of an Atlas Florida M Home, the changes made, and photos showing some of the works

Cross section view of M.H interior showing how the fixings of internal components playing a crucial factor in the Structural integrity.

The Red lines indicate staples being fired in through the external walls, floor and ceiling before waterproof finish is applied.

As you can imagine, without the support of the internal components and the way that they are fitted into the M.H, the structural integrity is vastly compromised.



Example of a M.H without the exterior fitted.

The areas highlighted in red show where the exterior would be joined to the M.H, also showing how the interior plays a vital role when it comes to structural integrity. and where the staples would be placed.

