



# NEULANDS COMMUNITY NEWSLETTER

Welcome to the Newlands community newsletter! Find out what's going on locally and keep up to date with news from the development and the wider Waterlooville area.

As the lighter mornings and brighter evenings replace the winter gloom we can begin to look forward to the easing of lockdown restrictions over the next few months. Perhaps there is finally some light at the end of the tunnel!

We have some cracking Easter activities planned across the development during the holidays so please be sure to check out what is going on and remember to get involved.

*Katie Bone*

katie.bone@havant.gov.uk | 07789 954369

For the latest updates  
visit: [www.facebook.com/westofwaterloovilledevelopmentnews](https://www.facebook.com/westofwaterloovilledevelopmentnews)



## BEREWOOD UPDATE

Our website has had a makeover! You can find out more about the development including site maps and timescales at [www.berewoodhampshire.co.uk](http://www.berewoodhampshire.co.uk)

You can also follow us on social media for the latest updates:  
Instagram & Twitter @berewoodhants  
Facebook.com/berewood

The rebuilding of the River Wallington is in its final stages with planting taking place along the river. Originally a concrete culvert, we have widened the river, planted up the banks with varieties to support local wildlife, and installed accessible paths. All work should be complete in the next couple of months (weather permitting!) but areas of the river are now accessible for walks in the Spring sunshine.

We have planning applications awaiting approval for improvements to the Berewood Community Nature Reserve which runs down the entire western edge of the development, and the second phase of Berewood Town Park which includes a state-of-the-art cricket pavilion. You can view details of all planning applications via the Winchester Planning Portal: [www.winchester.gov.uk/planning](http://www.winchester.gov.uk/planning)

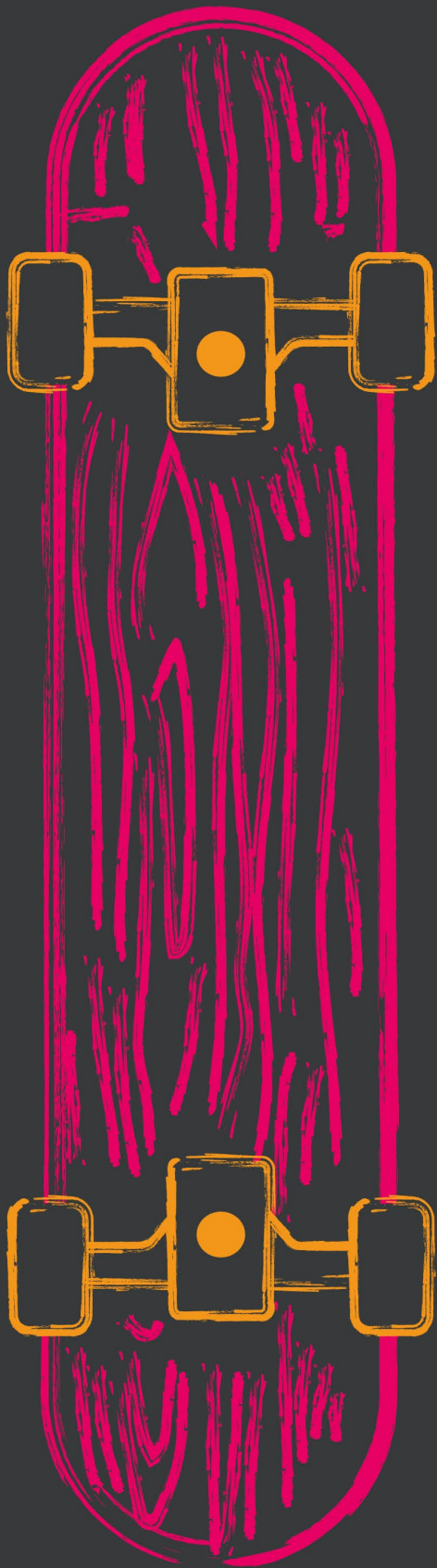


# Berewood Town Park Easter Trail

HOP AROUND BEREWOOD TOWN PARK FROM 2ND - 9TH  
APRIL TO FIND THE HIDDEN EASTER IMAGES.

FIND AND IDENTIFY THE 6 EASTER IMAGES, THEN SEND  
YOUR ANSWERS TO [KATIE.BONE@HAVANT.GOV.UK](mailto:katie.bone@havant.gov.uk) TO BE IN  
WITH A CHANCE OF WINNING A LARGE EASTER EGG.

HAVE AN EGGCITING EASTER!



# NEWLANDS SKATEBOARDING COACHING

**13TH AND 14TH APRIL,  
9AM TO 3:00PM**

**BEREWOOD TOWN PARK,  
LONDON ROAD, PURBROOK,  
PO7 5ST**

Kids of all ages can join our **FREE** skateboarding and scooter classes this Easter - sign up to Team Rubicon's 45-minute lessons and have some fun!

Equipment is provided, and lessons will be tailored to experience. First time skateboarders and half-pipe masters are welcome!

For information on how to book please visit [www.newlands-pc.gov.uk](http://www.newlands-pc.gov.uk)





## WELLINGTON VALE CARE HOME - EASTER EGG COMPETITION

Wellington Vale's Easter Bunny has been excitedly hopping all around Waterlooville on an Easter adventure trail.

Can you guess everywhere the Easter Bunny stopped to pose for a photo?

On the 2<sup>nd</sup> April visit [www.facebook.com/WellingtonValecc](http://www.facebook.com/WellingtonValecc) to see the competition in full for a chance to win a yummy Easter Egg!

## PIZZA DRAWING CHALLENGE

Thank you to everyone who tried to get a 'pizz-a' the action and entered into our Pizza Drawing Challenge! Residents at Wellington Vale Care Home were spoilt for choice when selecting the winners. However, we 'kneaded' a winner! Congratulations to:

Adult winner – Pamela Coleman

Children's winner – Riley Bloom



## WILDLIFE WATCH



Whether it's a badger on your drive, deer seen from your back window, water voles in the suds, or even toads using their crossing - we want to hear from you!

Keeping track of our the wildlife on the development not only allows us to understand the local biodiversity but can also be a great way to liven up walks. Follow tracks, study the skyline and listen out for all manner of chirps, rustles, squeaks and shrieks in order to witness the wild world on your doorstep.

We'd love to share photos and residents experiences with the wildlife around the area.

Send any content to Katie to include in future newsletters.

[katie.bone@havant.gov.uk](mailto:katie.bone@havant.gov.uk) | 07789 954369



## YOUR PLACE YOUR PLAN

Winchester City Council is inviting public feedback on the potential Strategic Issues and Priorities for a new Local Plan which will cover the district outside of the South Downs National Park. The council is inviting views from residents, businesses, parish councils, community groups, and from anyone with an interest in the district, Including those living or working in the South Downs National Park, about what is important to them. Tell us your thoughts on key themes including carbon neutrality, the need for housing, jobs, shopping, transport and other infrastructure, and community facilities as well as how best to protect our rich built and natural heritage. We encourage you to look at our new Local Plan website [www.localplan.winchester.gov.uk](http://www.localplan.winchester.gov.uk), where you can sign up for one of the virtual sessions we are hosting at different times of the day and you can give us feedback on the Strategic Issues & Priorities Document and keep up to date with progress on the preparation of our new Local Plan. The consultation is open until midnight on the 12<sup>th</sup> April 2021.

**YOUR PLACE  
YOUR PLAN.**  
Winchester District Local Plan

**15 February – midnight, 12 April 2021**  
[www.localplan.winchester.gov.uk](http://www.localplan.winchester.gov.uk)

# EASTER FOOTBALL COACHING

THIS EASTER, WINCHESTER CITY COUNCIL IN PARTNERSHIP WITH ACTIVEME 360 ARE PROVIDING FOOTBALL COACHING IN YOUR LOCAL AREA. EACH DAY WILL BE PACKED WITH FUN GAMES, FINISHING WITH A TOURNAMENT ON FRIDAY 16 APRIL!

**Monday 12, Tuesday 13, Wednesday 14, Thursday 15 and Friday 16 April**



Weeke	9.00 - 10.15am	St. Mathews Road (behind Weeke Primary School), SO22 6DR
Stanmore	10.45 - 12.00pm	Somers Close Recreation Ground, SO22 4EJ
Kings Worthy	1.00 - 2.15pm	Eversley Park, SO23 7NJ
Winchester City Centre	2.45 - 4.00pm	Devils Island North Walls Recreation Ground SO23 7DD
Bishops Waltham	9.00 - 10.15am	Priory Park, SO32 1SQ
Denmead	11.15 - 12.30pm	KGV Playing Fields, PO7 6EH
Newlands	1.15 - 2.30pm	Berewood Town Park MUGA PO7 5ST
Knowle Village	3.15 - 4.30pm	Knowle Village Green PO17 5GR
Colden Common	9.00 - 10.15am	Colden Common Recreation Ground, SO21 1RP
Whiteley For children in KS1	11.15 - 12.30pm	Meadowside Recreation Ground, PO15 7LJ
Whiteley For children in KS2	12.45 - 2.00pm	Meadowside Recreation Ground, PO15 7LJ

**COVID-19**  
SECURE 

**NEWLANDS RESIDENTS CAN ALSO ACCESS SKATEBOARDING SESSIONS**  
On Tuesday 13 and Wednesday 14 April



For more information please visit [newlands-pc.gov.uk](http://newlands-pc.gov.uk) or [facebook.com/westofwaterloovilleddevelopmentnews](https://facebook.com/westofwaterloovilleddevelopmentnews)

Suitable for girls and boys aged 6 – 13 years

£5 for all five sessions. That works out at just £1 a session!\*

For further information or to enrol please visit:  
[activeme360.com/book-online](http://activeme360.com/book-online)

For enquires please email [hello@activeme360.com](mailto:hello@activeme360.com)

If you are an A2Dominion tenant please email us for your discount code before booking

\*funded places are available on request, these will approved by WCC and ActiveMe 360.