

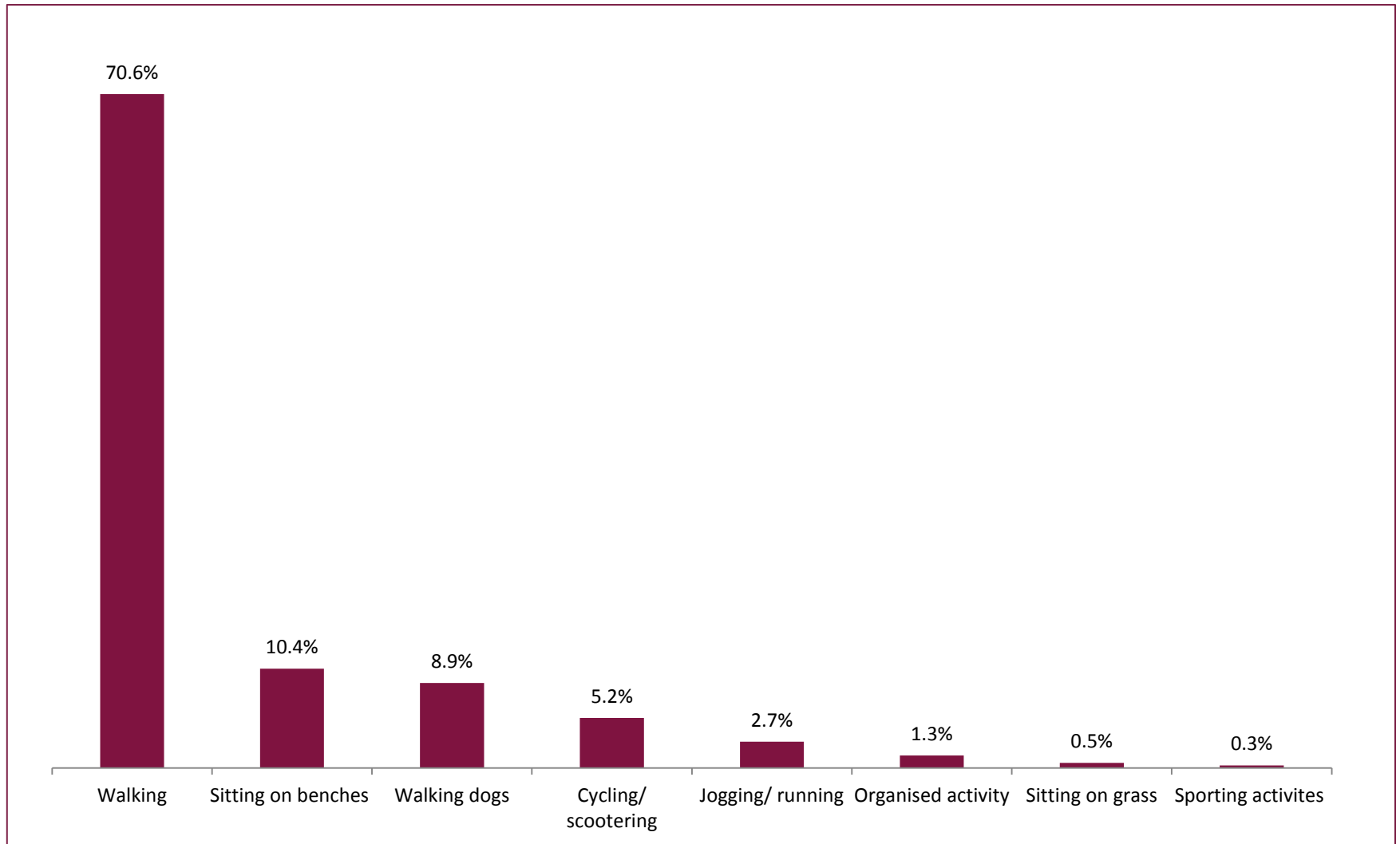
THURMOND CRESCENT



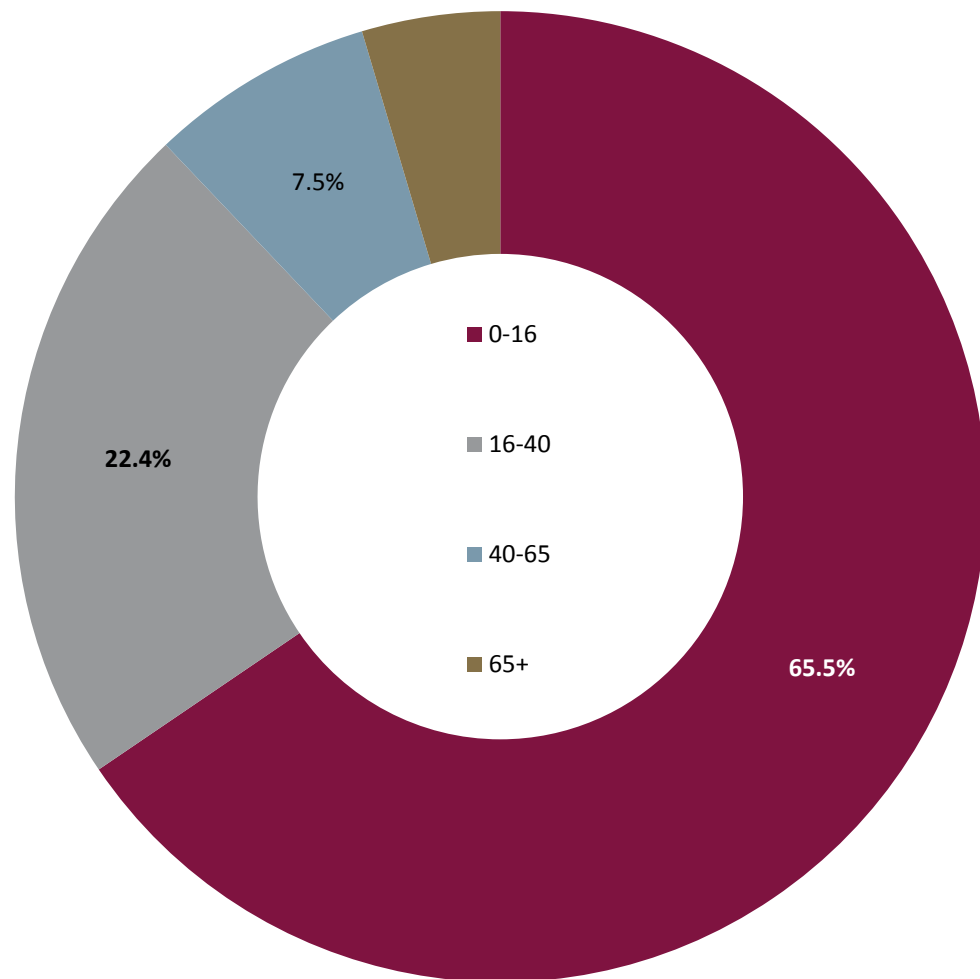
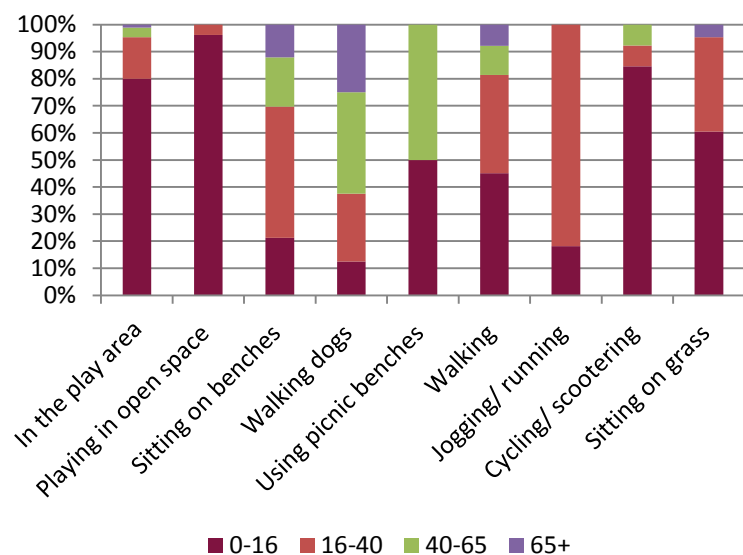
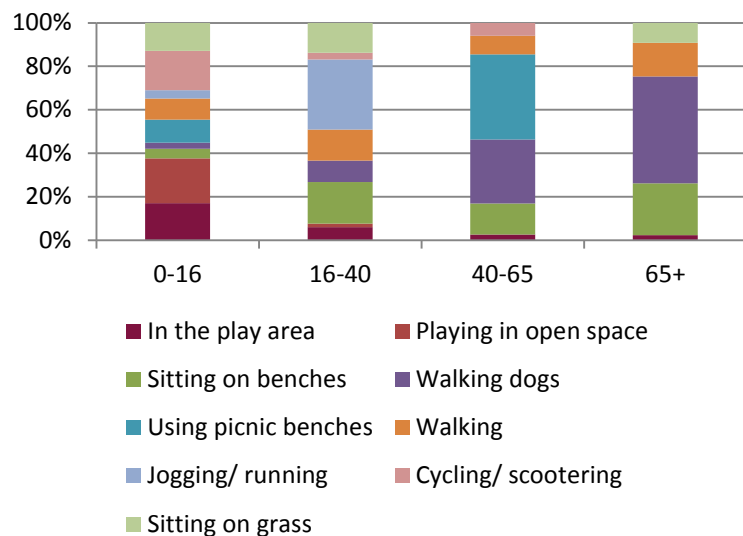
KEY FINDINGS: THURMOND CRESCENT

- Thurmond Crescent was visited 81 times during this survey and a total of 585 people were observed. An average of 7.2 people were present during each site visit, this was 21.2% lower than the overall average of 9.2 visitors per site
- 87.9% of visitors were aged 40 or under
 - Two-thirds (65.5%) of the visitor numbers were made up by the 0-16 year old demographic
 - The activities that all four age groups participated in at Thurmond Crescent were walking, walking dogs and sitting on benches
- 70.6% of people used this area for walking, the age breakdown is as follows:
 - 0-16 – 45.5%
 - 16-40 - 36.6%
 - 40-65 – 10.8%
 - 65+ - 7.8%
- The busiest day of the week was Saturday
 - 36.9% of visits were on a Saturday. An average of 10.8 visitors were on site during each survey visit that took place on a Saturday
- The quietest day of the week was Monday
 - 6.2% of visits were on a Monday. An average of 3.0 visitors were on site during each survey visit that took place on a Monday
- 43.9% of people visited the area in the autumn
 - An average of 11.7 visitors were on site during each survey visit in the autumn

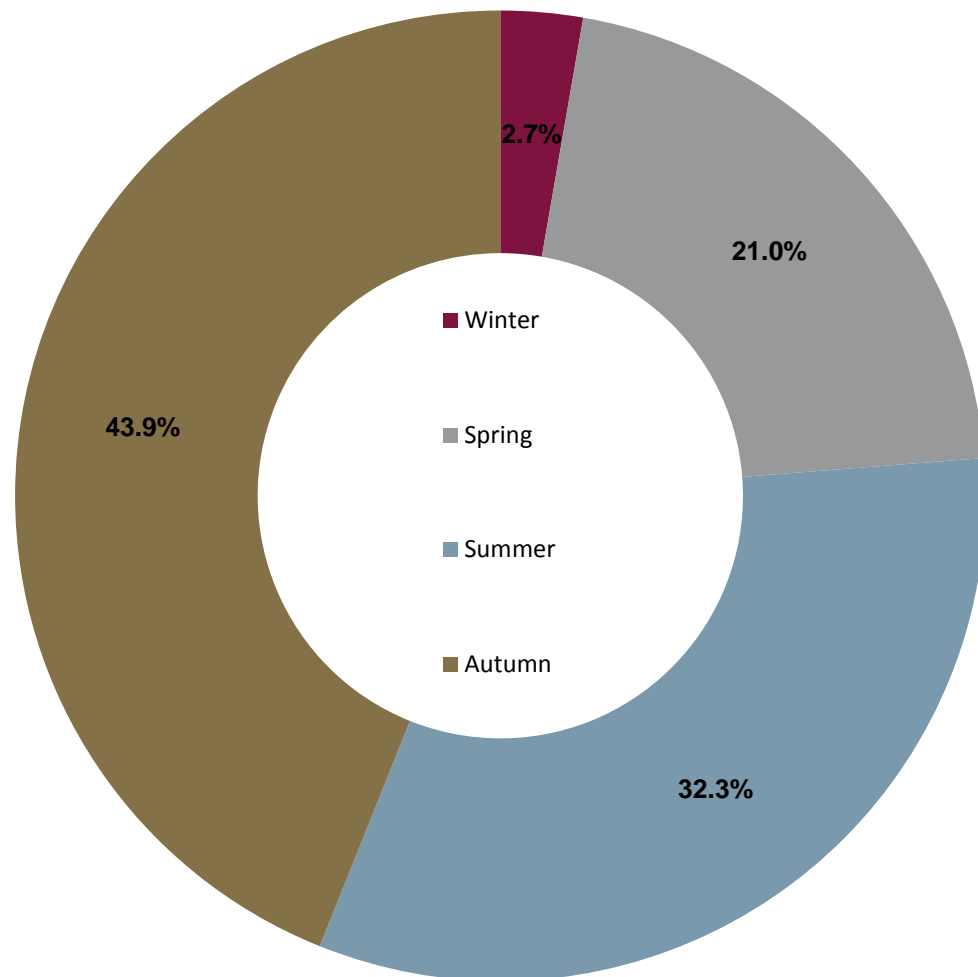
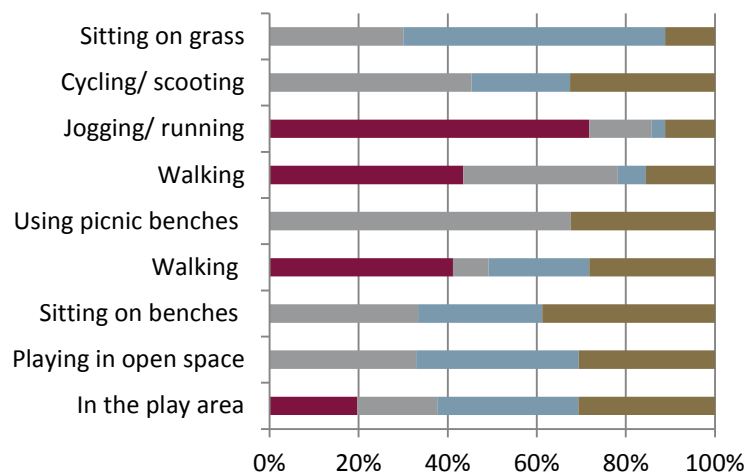
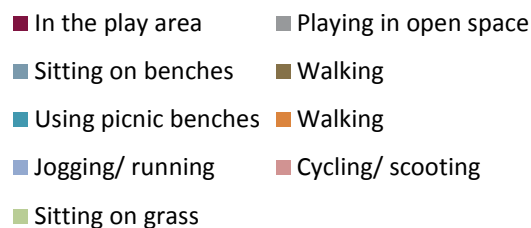
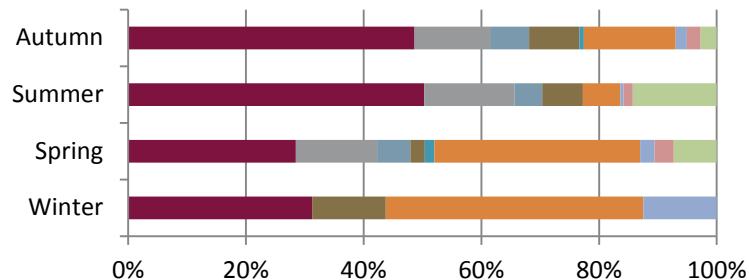
THURMOND CRESCENT



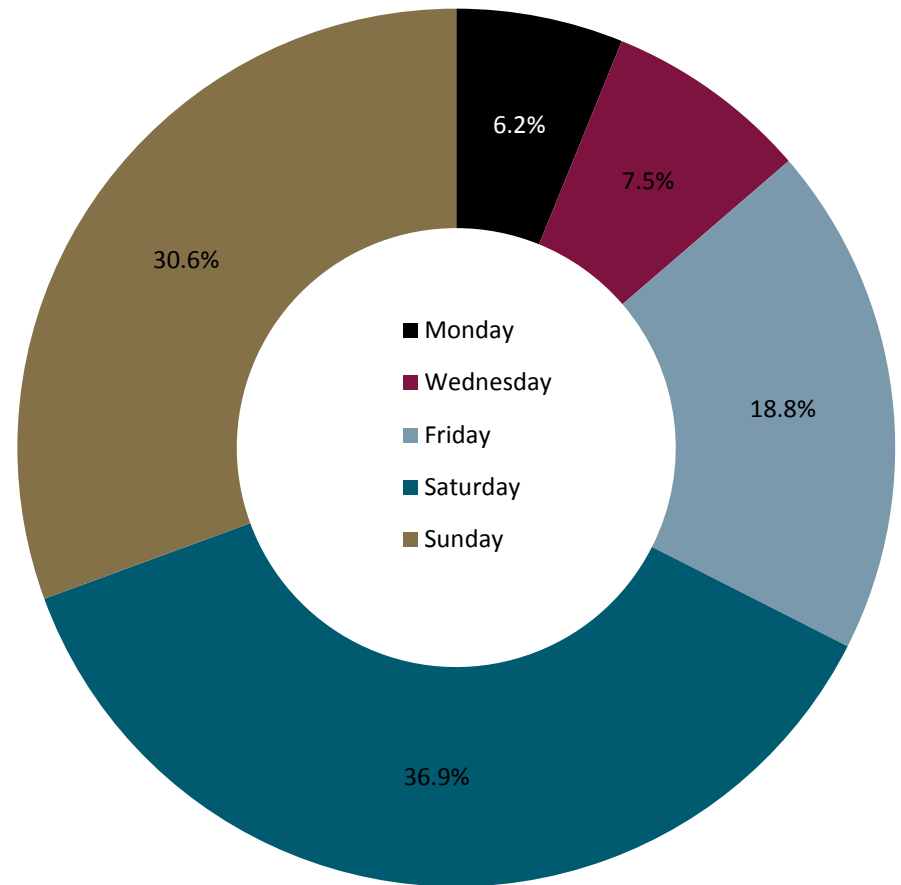
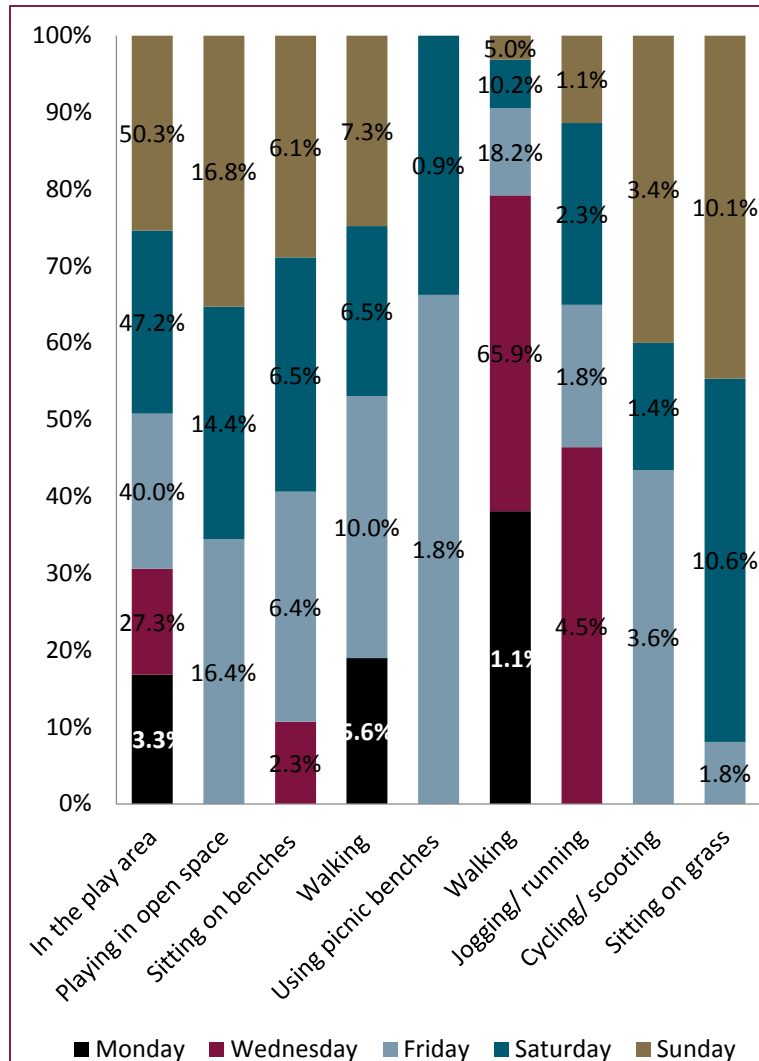
THURMOND CRESCENT: AGE



THURMOND CRESCENT: TIME OF YEAR



THURMOND CRESCENT: ACTIVITY BY DAY OF THE WEEK



THURMOND CRESCENT: TIME OF DAY

