

West of Waterlooville

Summer 2017

Berewood & Old Park Farm

Berewood/Old Park Farm Link Bridge is now OPEN!

On Friday 14th July the long awaited, much needed link bridge providing direct road access between Old Park Farm and Berewood development was officially opened by the Mayor of Winchester and the Mayor of Havant, with help from pupils from Berewood Primary School. Watched by local residents and Councillors, the ribbon was cut at the Houghton Avenue end in Berewood then the Mayors drove the short journey down to the Taylor Wimpey link bridge where County Councillor Stallard and Councillor Cutler opened to road to allow them to drive through.

The opening of the road is a milestone for the developments, making the journey to school much easier for many families (though we still encourage you to walk or cycle where possible!) and providing a main road route to the Household Waste Recycling Centre.



The Great West of Waterlooville Get Together

A big thank you to all those who joined us opposite Berewood School for our Community Get Together on 17th June. The sun was shining, the children were entertained and people enjoyed some time to relax and talk with friends and family. Lots of you told us commented on how much you enjoyed it and we hope to arrange similar events in future.



Next Community Get Together

Join us on **Sunday 30th July, 2.00 – 4.00pm** to celebrate the opening of the Western Open Space, next to Wellington Vale Care Home, off Darnel Road, Old Park Farm. Bouncy castle and games, everyone welcome!

Inside this Edition...

- Parish Council Update
- Berewood Primary School News
- Western Open Space and Play Project News
- Residents Meetings Update
- Waterlooville Pop Up Cinema

Update on the creation of the new parish:

The clock is now ticking

..... because the formal Petition, organised by the WoW Advisory Group, which many of you signed (well over 200 names in all) has now been delivered to the Chief Legal Officer at Winchester City Council (WCC). The request for a Community Governance Review to examine the proposal for a new Parish Council for the West of Waterlooville developments has been lodged. There is a legal requirement for WCC Officers to reach a conclusion within twelve months so we will know the result by June '18 if not before. There are some steps along the way, and an important one will be a consultation period probably between August and October 2017. WCC will organise this and residents will be able to contribute. The Advisory Group will ensure everyone is kept up to date.

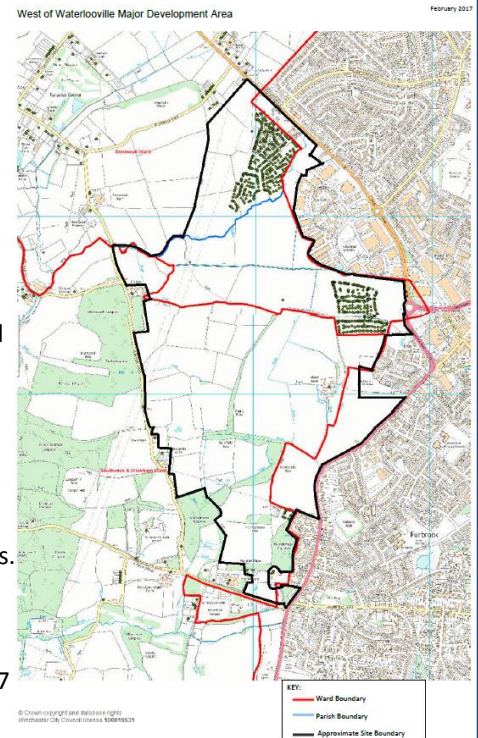
In the meanwhile, the Advisory Group, who are confident that the response from WCC will be positive, will take steps to set up a Shadow Parish Council. This will be made up of interested residents, who, under the mentoring of the two current Parish Councils, will find out more about how the new Council will operate – its roles and responsibilities. In due course training will be made available.

If you are interested in the idea of being a councillor or clerk, then please contact Tony Daniells using committeeclerk@denmeadparishcouncil.co.uk or call 023 9224 7947

by Cllr Neil Lander-Brinkley

Key Facts on the new parish:

- The West of Waterlooville Development sits across both the Havant Borough and Winchester City Council areas; the majority of residents will pay council tax to Winchester City Council (WCC), and a smaller number to Havant Borough Council (HBC).
- WCC residents will also be part of either Denmead or Southwick and Widley Parish. Winchester residents pay a precept to their Parish Council as part of their council tax. This payment will go to the new parish when it is established and spent on services within the parish.
- Havant Borough does not have parishes; all local services are delivered as part of council tax paid to the Borough Council, no precept is payable.
- **The Havant/Winchester Boundaries will not change through this process.** Legally the new Parish will only officially cover the Winchester parts of the development. However communities are not defined by council boundaries and so Havant residents are encouraged to get involved in shaping the community and will be able to get officially involved by standing for the role of Parish Councillor.
- The name currently proposed for the new parish is Newlands, based on the historical and local significance (Newlands Farm, Newlands Lane, a community of new lands). This name has been considered for many years, before the marketing names of Wellington Park and Berewood were introduced and will reflect all areas of the development.



Are you interested being part of a Residents Association or a Neighbourhood Watch Scheme?

Over the past year the Residents Meetings have grown tremendously with an average of 50 people across all three development areas coming together to hear updates and news on the development. We are delighted residents are interested in learning more about where they live and to have your support, but we do know it makes it difficult to address individual concerns or problems. There has been interest in setting up smaller meetings for each of the development areas, possibly by forming a Residents Association to give each development its own time and focus, and this is something that may help move things forward more locally.

- A Residents Association is led by residents for residents; they can give a stronger voice to address problems and issues. The purpose of the group is agreed by those involved, and we can support you to set up and move forward.
- Residents Associations are also a great way to also form Neighbourhood Watch Schemes which help bring the community together and create a safer place to live.

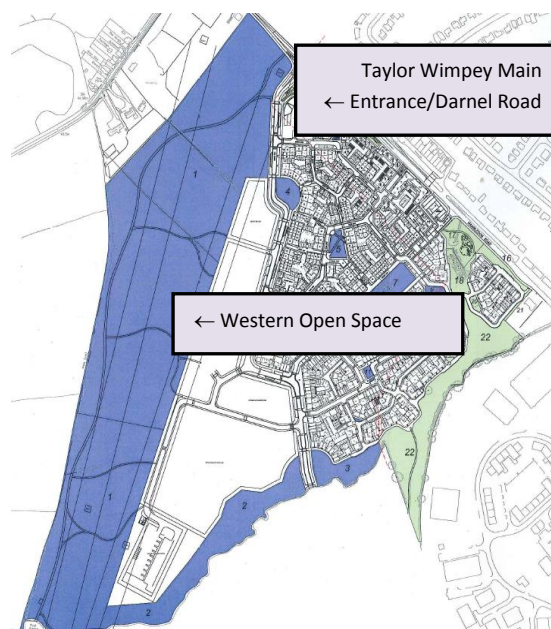
We will be holding a meeting in September for anyone interested in setting up, or supporting groups for their development, as soon as the school opens for the new term. For more information in the meantime, or to express an interest, please email the Community Officer Jaime Bridges - jaime.bridges@havant.gov.uk.

The Western Open Space is now open for residents to enjoy!

The newly opened Western Open Space is a fantastic, HUGE place for children to play, for walkers & runners to explore, and for people to come and enjoy the beautiful countryside. To celebrate this amazing community space we will be holding a Get Together on **Sunday 30th July, 2.00-4.00pm** with a bouncy castle and family games – bring a picnic and a blanket and come join us, everyone is very welcome so bring old friends and come and make new ones!

New Play Area – What would YOU like to see?

We are lucky to have funding from Taylor Wimpey to design and install some natural play equipment on the Open Space but we want YOU to help choose what that will look like. Over the summer we will be finding out what you and your families would like to see, starting with the Get Together so come along and have your say! We are also asking you to share photos of great play areas you might see while out and about over the summer – **visit our Facebook page *West of Waterlooville Development News* for more information and to share your photos!**



Berewood Primary School completes its third year since opening

When the school closes its doors for the summer holiday on Friday 21st July, we will have completed our third year supporting the growth of the Berewood development and working with your children. As we look back over the year we are truly proud of our children's achievements and share with you some of the exciting events of the summer term.

Last week we managed to squeeze in a happy sports day ending the afternoon just as the rain began to fall. Everyone had a wonderful time, sharing activities in our Houses before taking part in running race finals. All events scored points and the day ended with Hawks House winning the Berewood Sports Cup. We were supported by the sports leaders of Crookhorn College who did a super job encouraging the children and ensuring every child took part and did their best.

Over the past year we have enjoyed extending the children's topics through trips and visits. Every child has their favourite one, but I always enjoy the first visits with our Reception Classes as a real treat. This year our youngest children went to the Sea Life Centre in Southsea, learning more about the animals who live in the sea before walking on to the beach to look for stones, shells and any other evidence of sea life. Our oldest class has also been on several school trips this year and recently spent a day in Chichester, visiting the Planetarium and exploring the Tim Peake exhibition at the Chichester Museum.

Here at school we are watching our grounds mature, as the plants and bushes grow and blossom. Different areas are now being established, and a favourite one for many is the Forest School corner, where each session dens appear, bugs are found and hot chocolate is drunk around a camp fire. Classroom learning is also engaging and interactive, and watching our children grow and flourish themselves is a great privilege.

As the year ends we will say goodbye to our year 6 pupils, excited for them but sorry to see them leave; they have been superb House Captains, School Councillors and role models for our children.

When the school is full we will have 420 pupils in attendance, and this year marks our half way point with almost 200 children on roll. We look forward to welcoming more of our community into school next year as we open two new classes in reception and add to each year group with children moving onto you to you, our neighbours, for your continuing support for your interest in our Berewood Primary School.

Mrs Patrick

Headteacher, Berewood Primary School



WHATS COMING UP IN WATERLOOVILLE



SUMMER 2017

CINEMA

St Georges Hall Waterloo

7pm for 7.30pm

Tickets £6 inc tea and treat

27 July - SULLY

24 August - LION

FAMILY FILMS - 2PM

Child £3 Adults £5 Family ticket £10

inc drink and treat

3 August THE BFG

24 August LEGO BATMAN

OTHER EVENTS

SATURDAY BANDSTAND

12 August - Surprise guests and
Waterlooville in Bloom judging

16 September - Schools perform

21 October '6'

SUMMER FETE Jubilee Park

20 August

For more information on any of the above

Facebook - Waterloo Events team

email waterlooville.events@gmail.com

phone: 02392266418

Useful Websites for Community Information

Facebook - West of Waterlooville Development News

Facebook - What's on in Havant Borough?

www.berewoodhampshire.co.uk.

www.westofwaterlooville.wordpress.com

Useful Contacts

Winchester City Council

01962 840 222

www.winchester.gov.uk

Havant Borough Council

023 9244 6019

www.havant.gov.uk

Denmead Parish Council:

023 9224 7947

www.denmeadparishcouncil.co.uk

Southwick & Widley Parish Council:

023 8046 3228

www.southwick-widley-pc.gov.uk

Community Officer – Jaime Bridges & Jayne Lake

jaime.bridges@havant.gov.uk

jayne.lake@havant.gov.uk

Guinness Hermitage - General Enquiries

0300 303 8034

Out of Hours Emergencies

0300 200 0015

Grainger Trust – General enquires

0207 940 9500

Out of Hours Emergencies

0345 300 5824

Radian - General Enquiries

0300 123 1 567

Out of Hours Emergencies

0800 783 8937

Trinity - 0845 345 1584

Police (Emergency): 999

Police (NON Emergency): 101

NHS Direct (NON Emergency): 111