

WELCOME

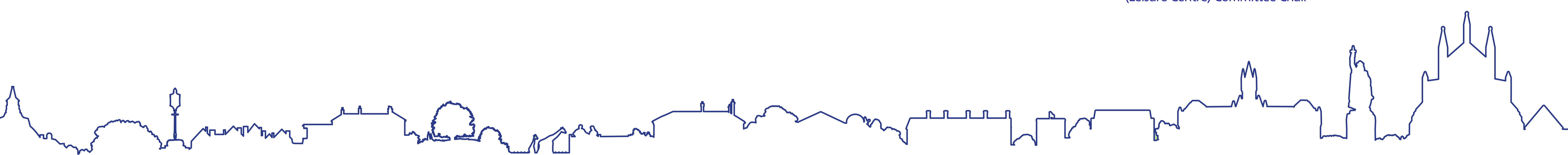
“ We are thrilled to be able to put forward the latest thinking for this important and exciting project. We’re offering the people of Winchester district a state-of-the-art Sport & Leisure Centre with a high specification and excellent range of facilities, including a 50-metre pool. The centre’s attractive park setting will provide a lovely vista for people to enjoy while swimming, exercising or engaging in sports at all levels and abilities.

Our thanks to the many local people who have shared their views with us, helping us to shape our plans. We are looking forward to delivering a new facility which will represent a considerable boost to the enjoyment and well-being of local people. Please give us your views.

”

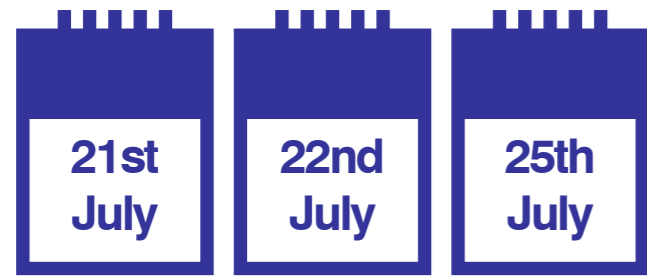


Councillor Lisa Griffiths
Portfolio Holder for Health and Wellbeing, and Cabinet
(Leisure Centre) Committee Chair

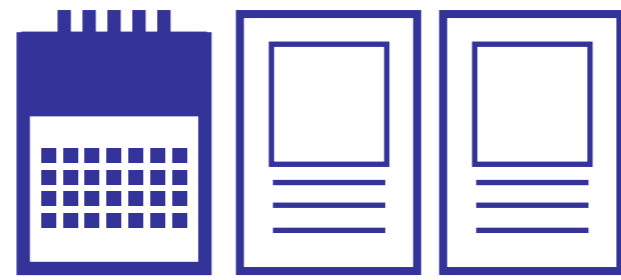


SPORT & LEISURE PARK WINCHESTER

Engagement Period

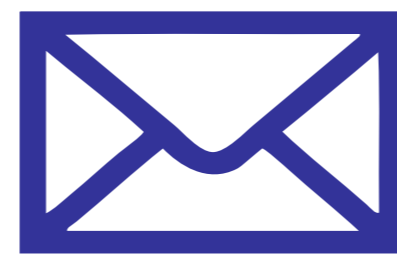


3 manned exhibitions
Consultation ended
18th August



4 week exhibition
River Park Leisure Centre

Notification



Over 4,000 emails
issued



4,500 leaflets
distributed



Press coverage of
event

Locations



Events held at the
Guildhall & the Sports
Stadium (and online)

Public Response



253 people
attended



389 completed
questionnaires



Overall Positive Support
for the Urban Design
Framework

82%

Felt Phase 1
Engagement was
helpful

You said...

We did...

Environment and Landscape:

- Preserve natural qualities of the area; retain / create new, 'unkempt areas' to enhance ecological value
- Consider peripheral routes for running / training / walking

- Proposals identify new areas for enhanced biodiversity
- The trim trail delivers this aspect

You said...

We did...

The relationship between the Sport & Leisure Park and adjacent uses:

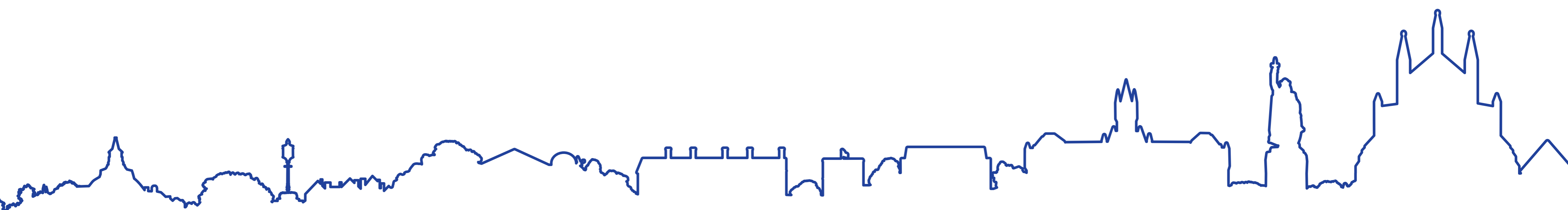
- What are future plans for the Depot Site
- Flooding and transport are a particular concern to adjacent residents
- There is interest in the possibility of an ice rink on the adjacent Depot Site

- Proposals remain flexible to facilitate commercial negotiations
- Concerns are noted and assessments are on-going and have influenced the Urban Design Framework
- The Depot Site is not currently on the market and there have been no negotiations to date regarding a sale. Any future development would be subject to the land being marketed for sale or lease and the submission of a planning application

SPORT & LEISURE PARK WINCHESTER

You said...	We did...
The Sport & Leisure Park:	
• Must work for the community	• The Park will be an inclusive place, for the use of everyone
• A Sporting Centre of excellence for elite athletes / swimmers	• The Park provides for excellence and elite sports
• Retain King George V Playing Fields and pavilions	• The playing fields will be retained
• A natural, direct footpath connection between the two halves of the park	• The land is owned by Hampshire County Council and we are in discussions with them
• A natural trim trail around the edge of the site	• Detailed plans for this are evolving

You said...	We did...
Access and Movement:	
• Adequate parking provision within the Park is key	• An appropriate parking strategy will be finalised shortly
• We need to think about the relationship to, and capacity of, the nearby Park and Ride Sites	• Crossing points have been identified to improve connections; capacity is to be increased
• Consider pedestrian and cycling facilities and safer connecting routes into the Park	• The Urban Design Framework (UDF) continues to promote safe access to the Park by foot and bicycle
• Review the residents parking permit scheme in the nearby areas	• Discussions with residents are planned
• Investigate accessibility of the Bar End site in comparison to River Park Leisure Centre	• Assessments identified Bar End as the best location



SPORT & LEISURE PARK WINCHESTER

In response to your feedback during the last public engagement exercise in July 2017, the vision for the Sport & Leisure Park has evolved, and a concept design for the Sport & Leisure Centre has been developed. The Urban Design Framework (UDF) captures the long term aspirations for the Park, and the first phase of its implementation includes details of the new Sport & Leisure Centre.

Key features of The Urban Design Framework



New Sport & Leisure Centre

The Sport & Leisure Centre forms the hub of the Park.



The Depot Site

Plans for this site will be developed at a future stage though it is envisaged building heights will be 3 storeys along the northern edge of the site and 4/5 storeys facing the Sport & Leisure Centre.



Hampshire County Council Land

It may be possible in the future for some of the land to be transferred to the Park. A shorter term aspiration is to create a pedestrian link to connect the two halves of the Park together.



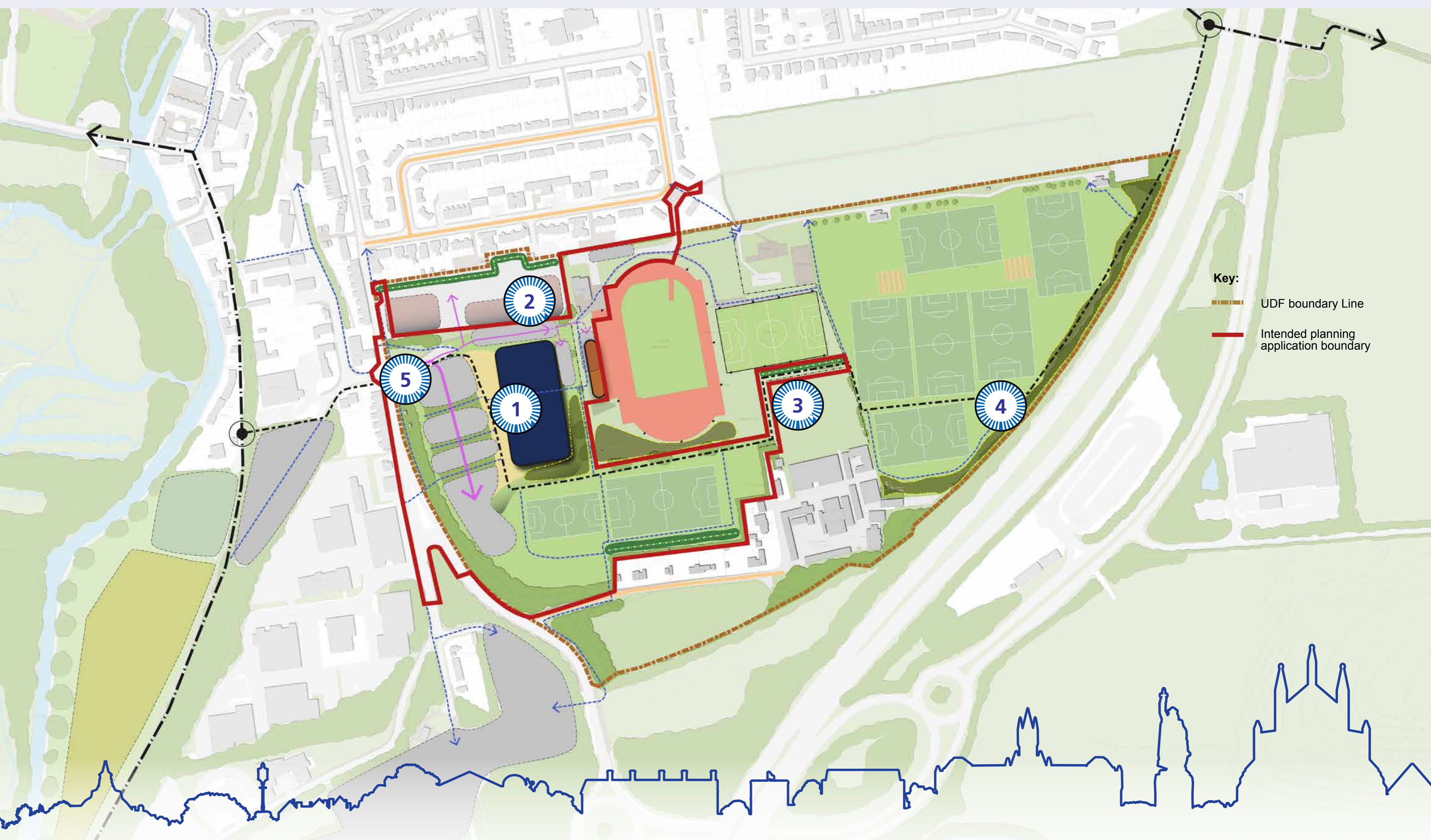
Strategic Pathways

The long term aim is to have a network of new pathways, along with a dedicated route that connects the South Downs Way (north east) with the City Centre and the National Cycle Network (west).



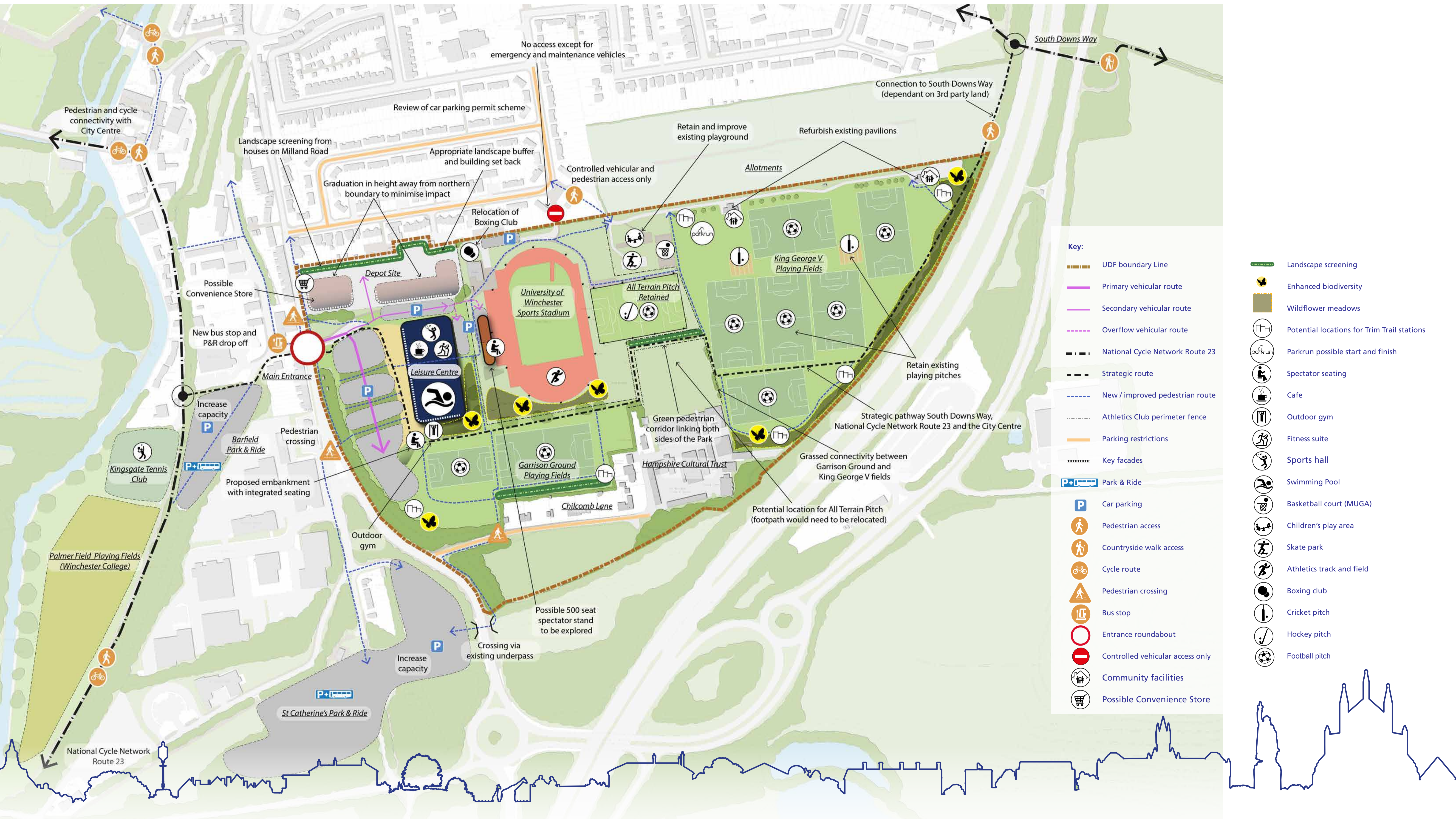
Gateway to the City

The aim is to have a vibrant and striking arrival at the entrance off Bar End Road to celebrate the importance of this entrance to the City.



SPORT & LEISURE PARK WINCHESTER

900 questionnaires and 500 face-to-face conversations have formed this Urban Design Framework. See how the park could look and work below.



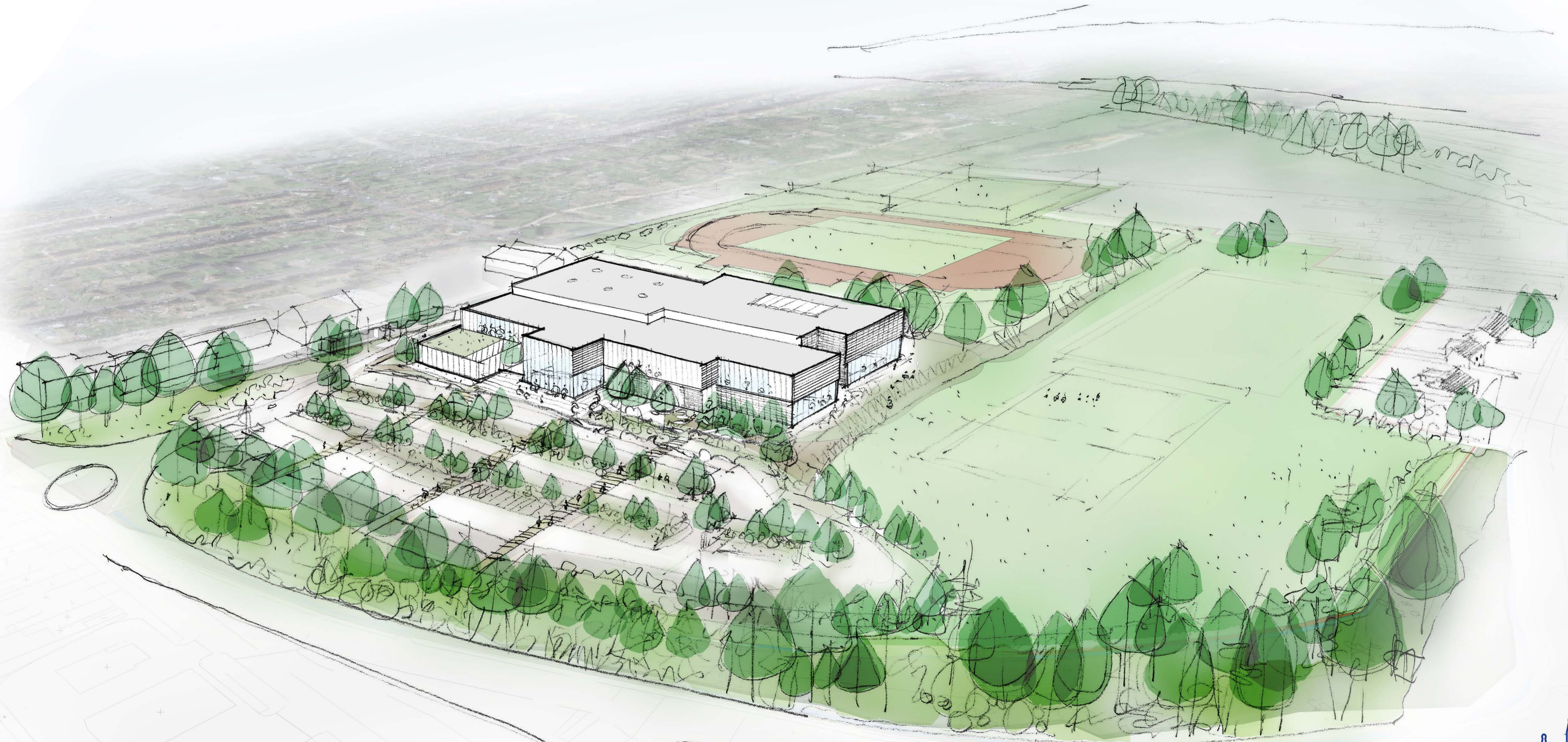
SPORT & LEISURE PARK WINCHESTER



- Key:
- | | |
|-------------------------------------|--|
| 1 Main pedestrian entrance | 6 Cafe spill out seating |
| 2 Main vehicular entrance | 7 Walkway |
| 3 Coach drop off | 8 Terrace lawn with integrated seating |
| 4 Potential feature signage | 9 Overflow car park |
| 5 Car parking within planted swales | 10 Buffer planting |

SPORT & LEISURE PARK WINCHESTER

The layout of the overall site is being developed to be 'green' and informal. The planted boulevards, natural planted car parking and open green spaces provide an interesting and pleasurable experience for visitors.



Aerial view of the developing site

SPORT & LEISURE PARK WINCHESTER

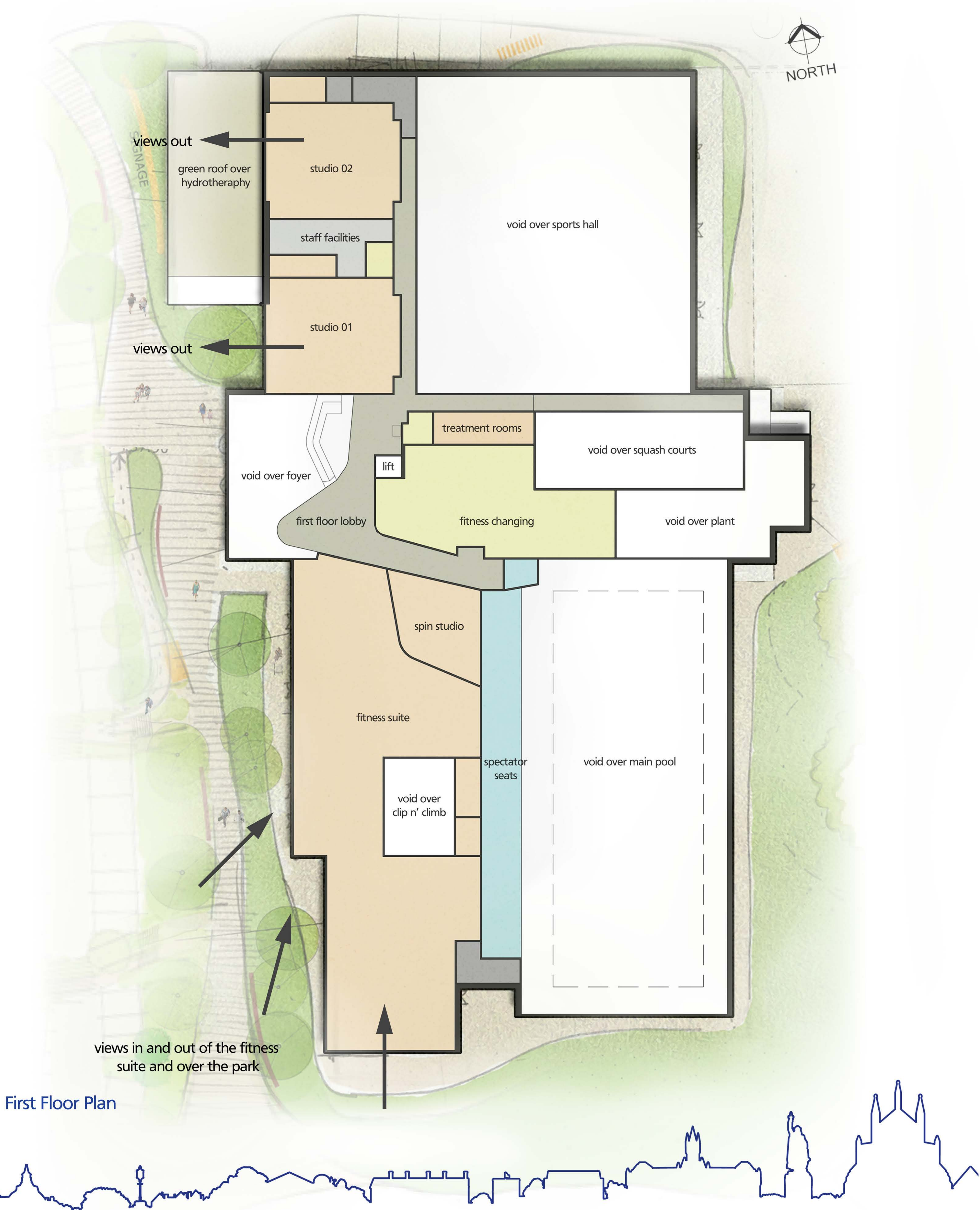
The connection between the sports hall and the stadium has been developed to provide a link between the dry sports inside and those outside. This means that the sports hall will not be a closed box but will be part glazed to the stadium.



Ground Floor Plan

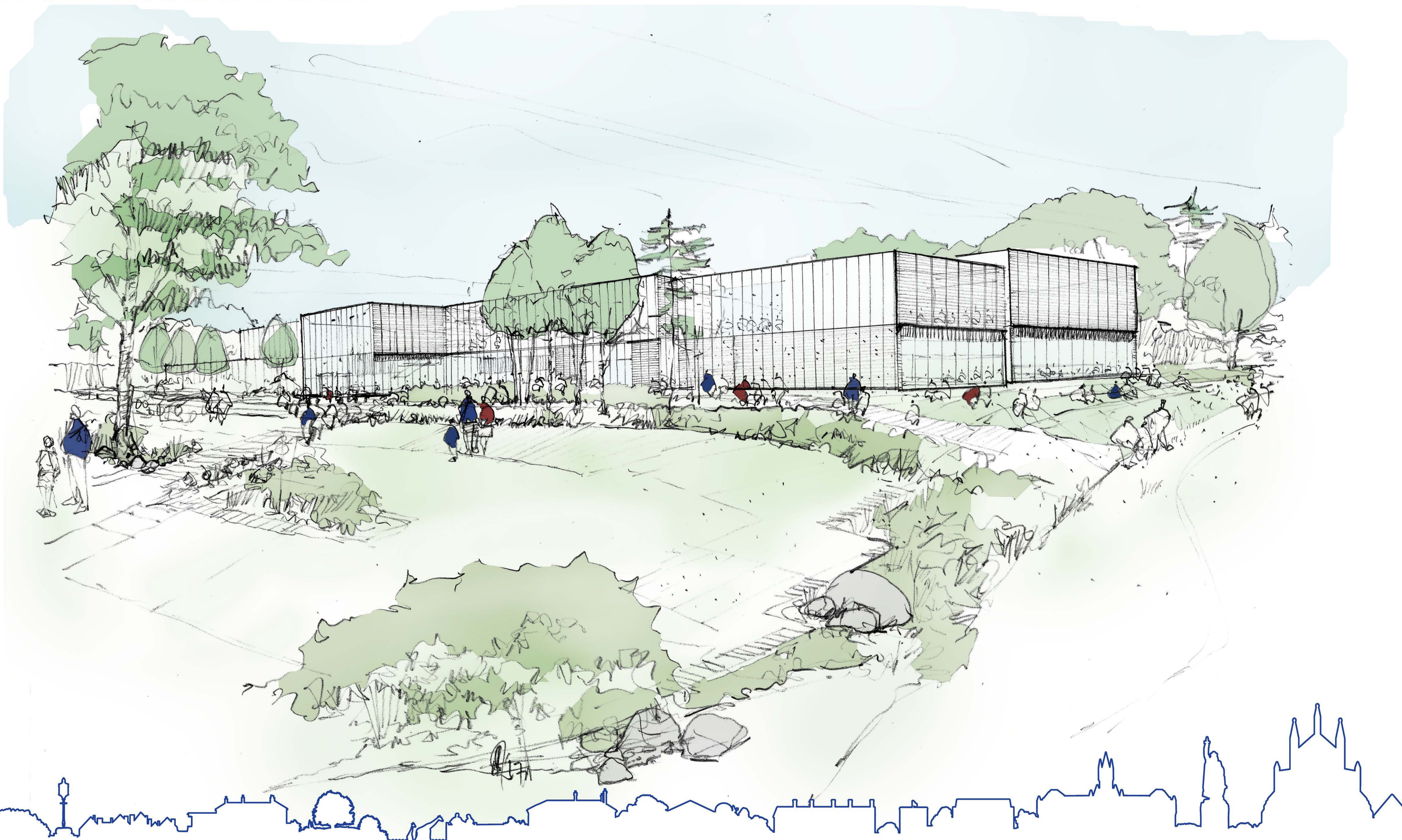
SPORT & LEISURE PARK WINCHESTER

From inside the building, all important spaces will look to the park and surrounding landscape. This will include the sports hall, two swimming pools, the fitness suite and the cafe.



SPORT & LEISURE PARK WINCHESTER

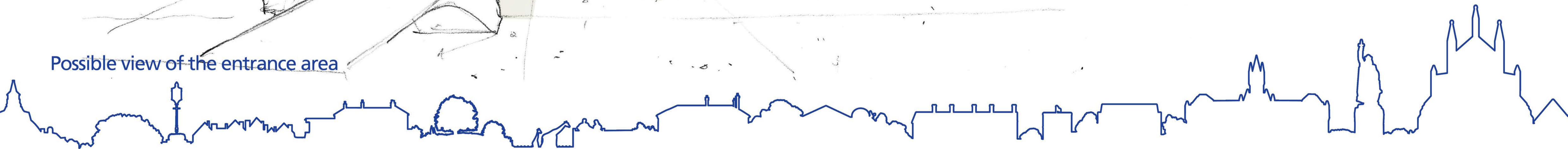
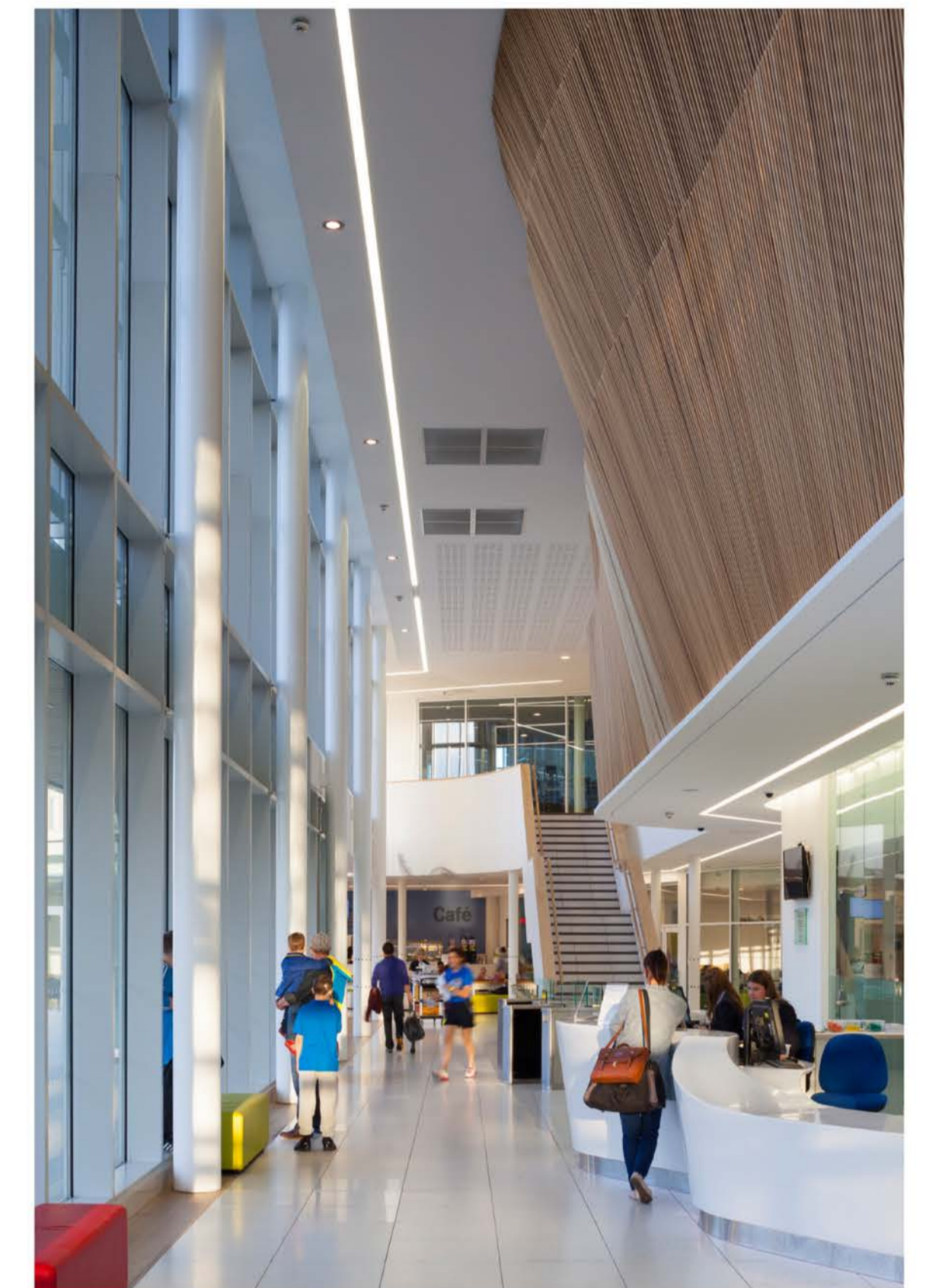
The building should be simple and unfussy when viewed from Bar End Road and the moment you arrive on site. People should be able to see through and into the building from the car park and the park.



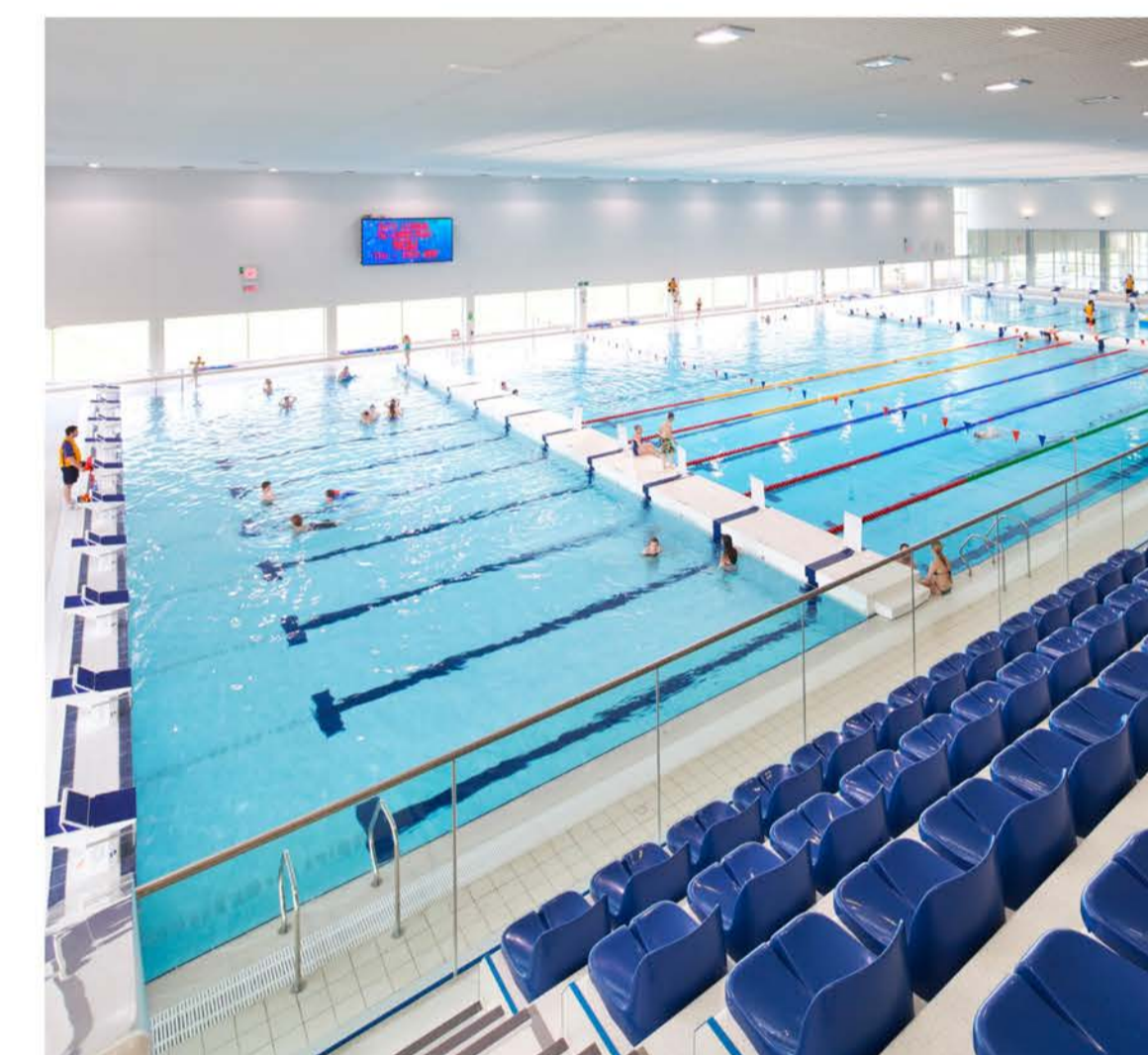
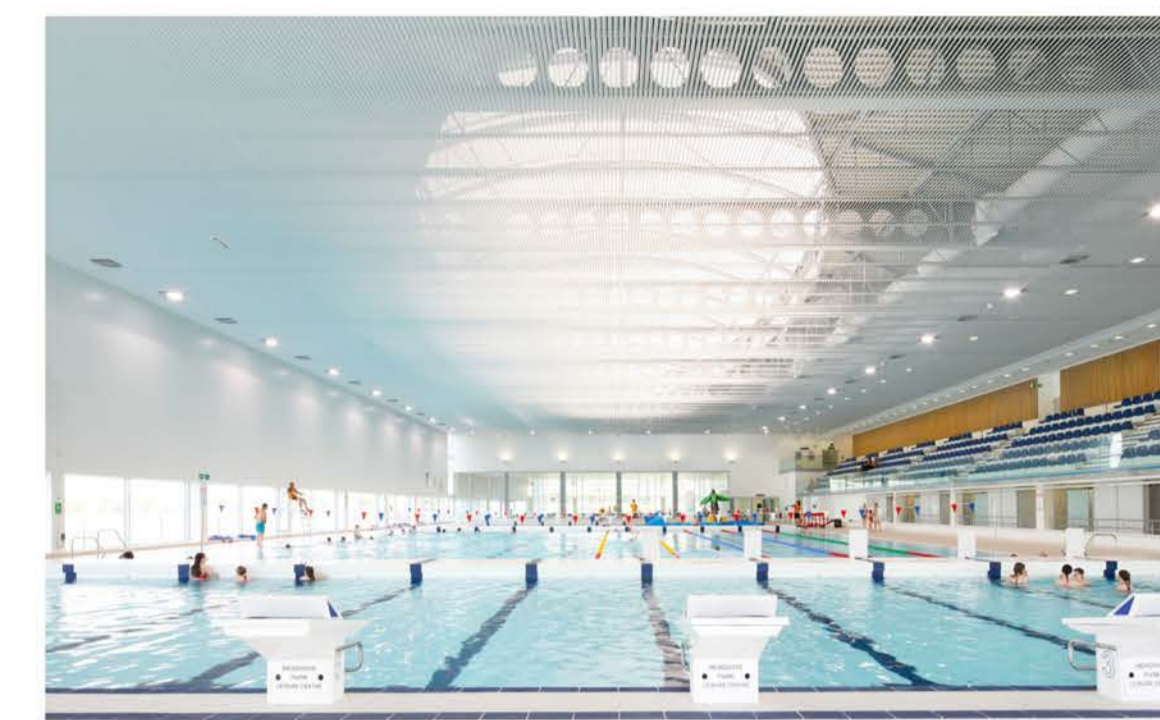
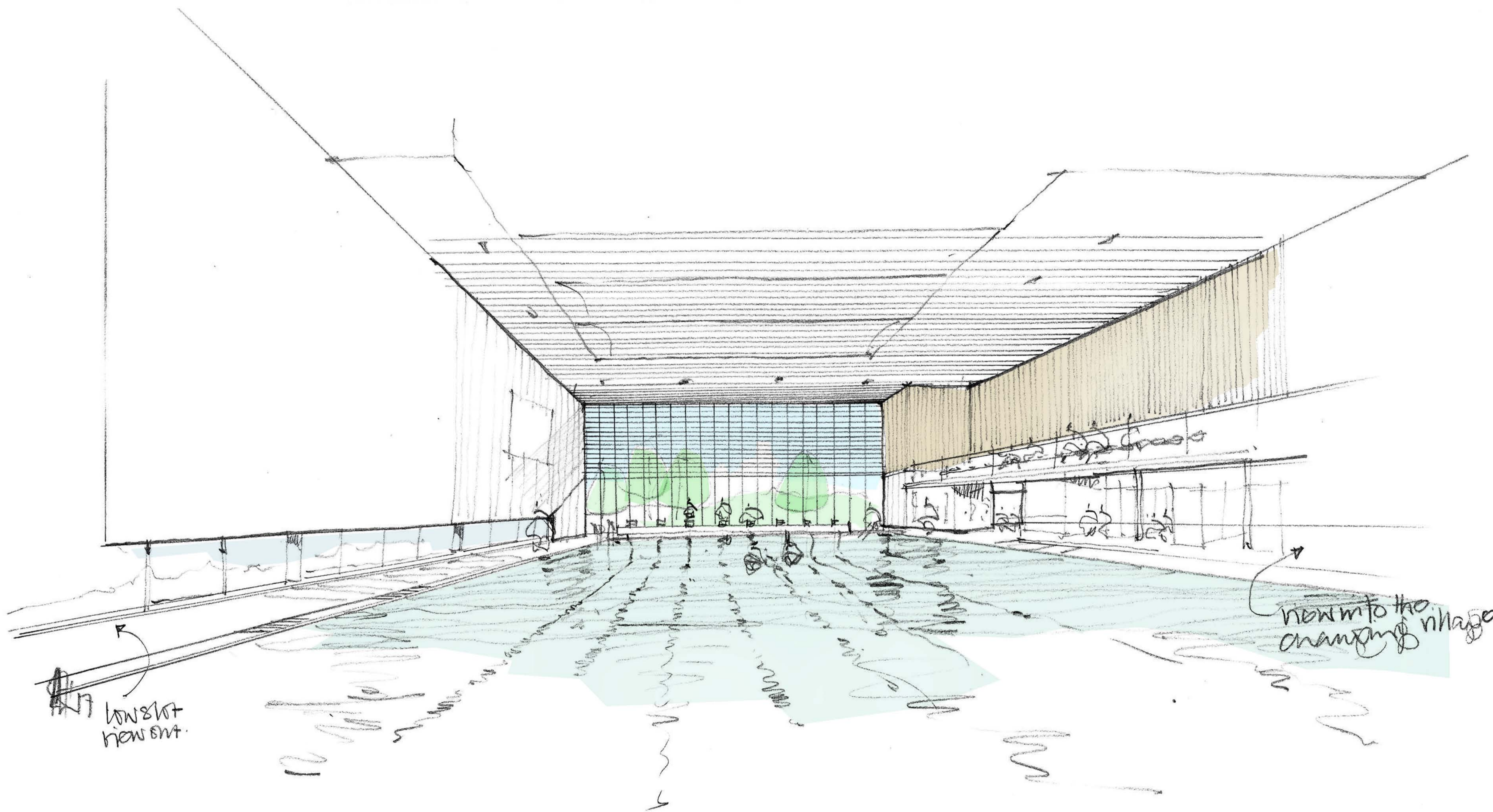
SPORT & LEISURE PARK WINCHESTER



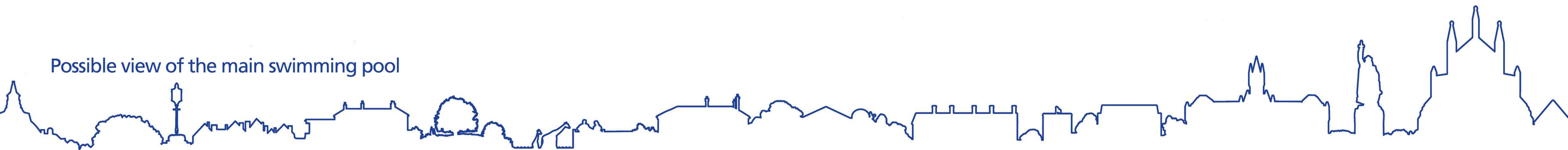
SPORT & LEISURE PARK WINCHESTER



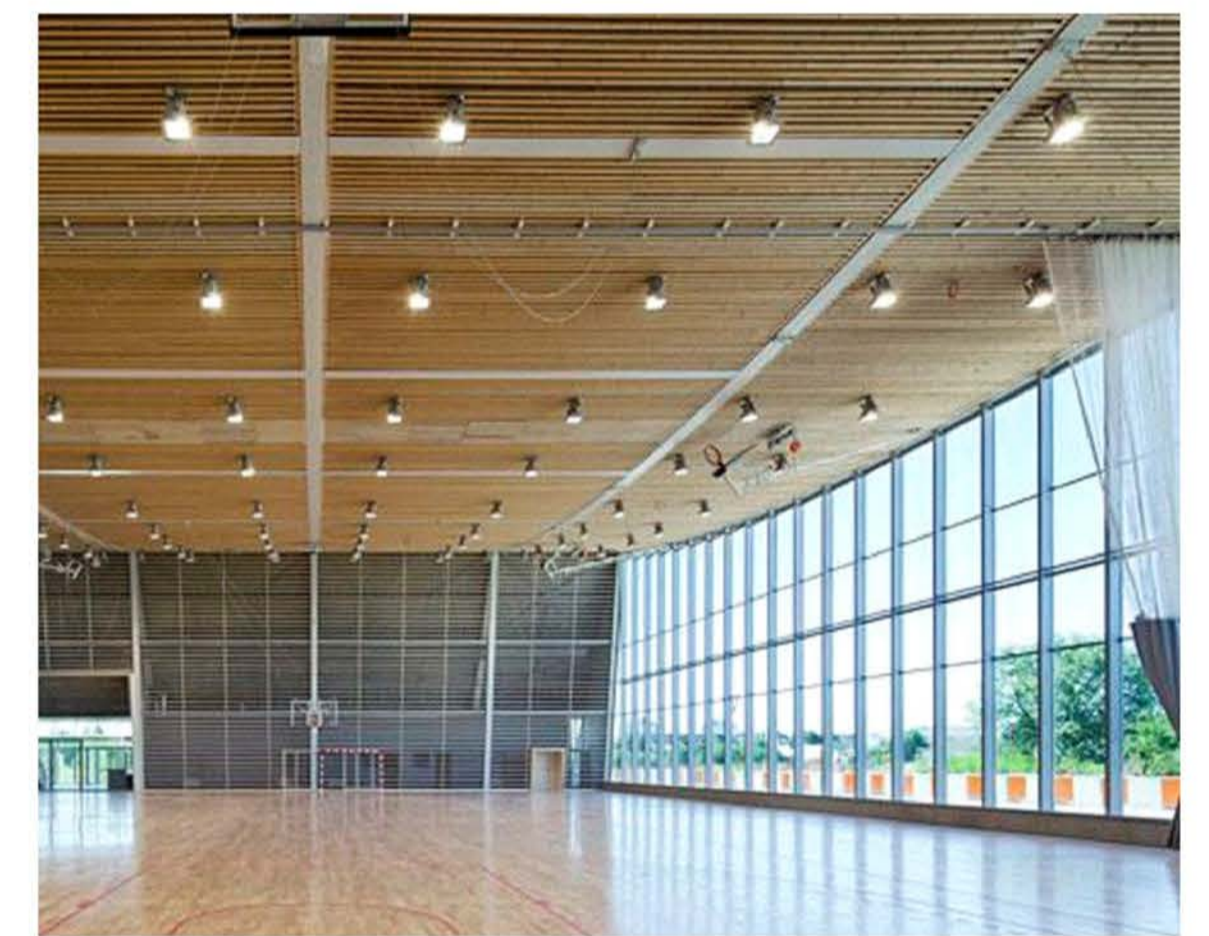
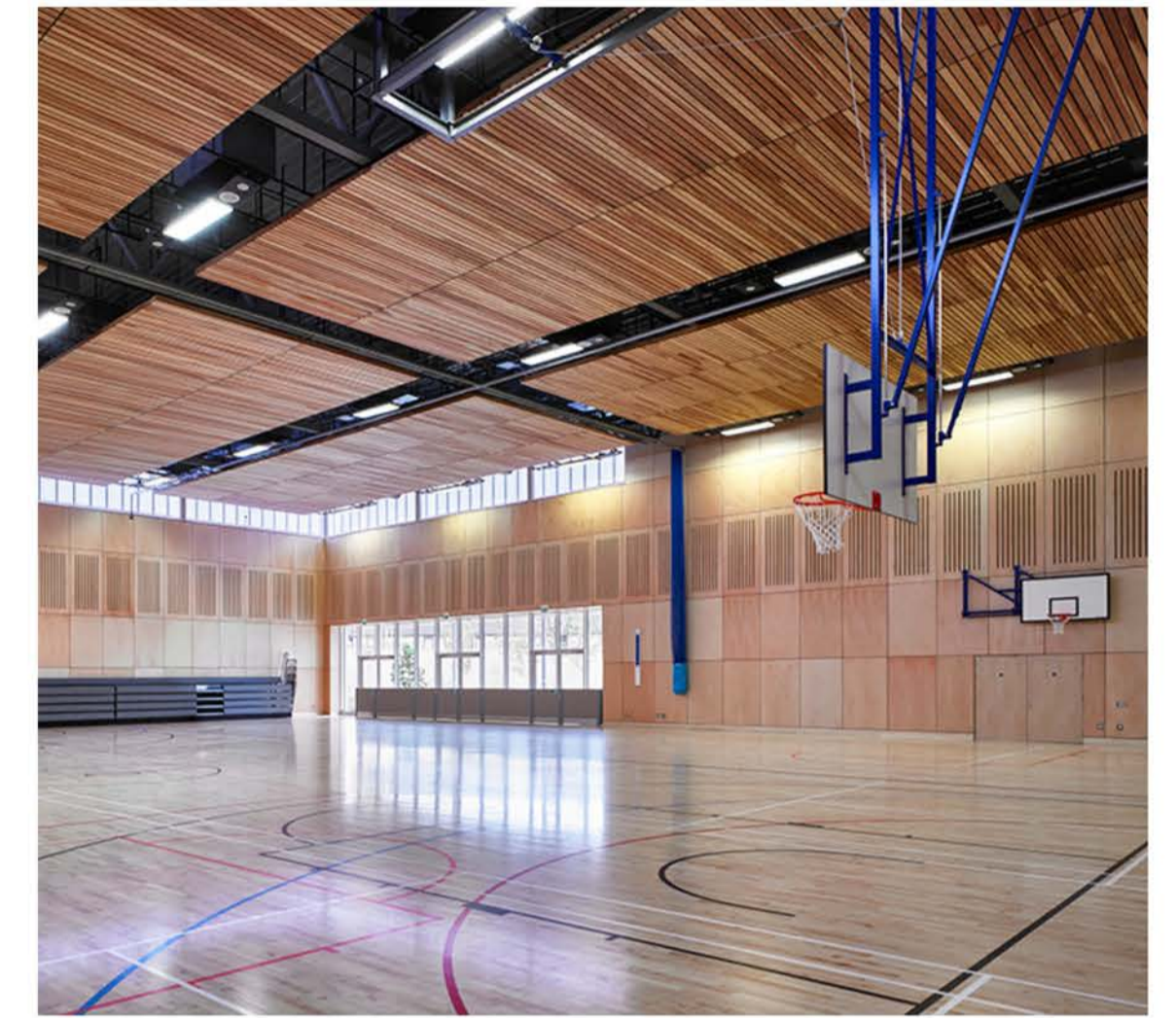
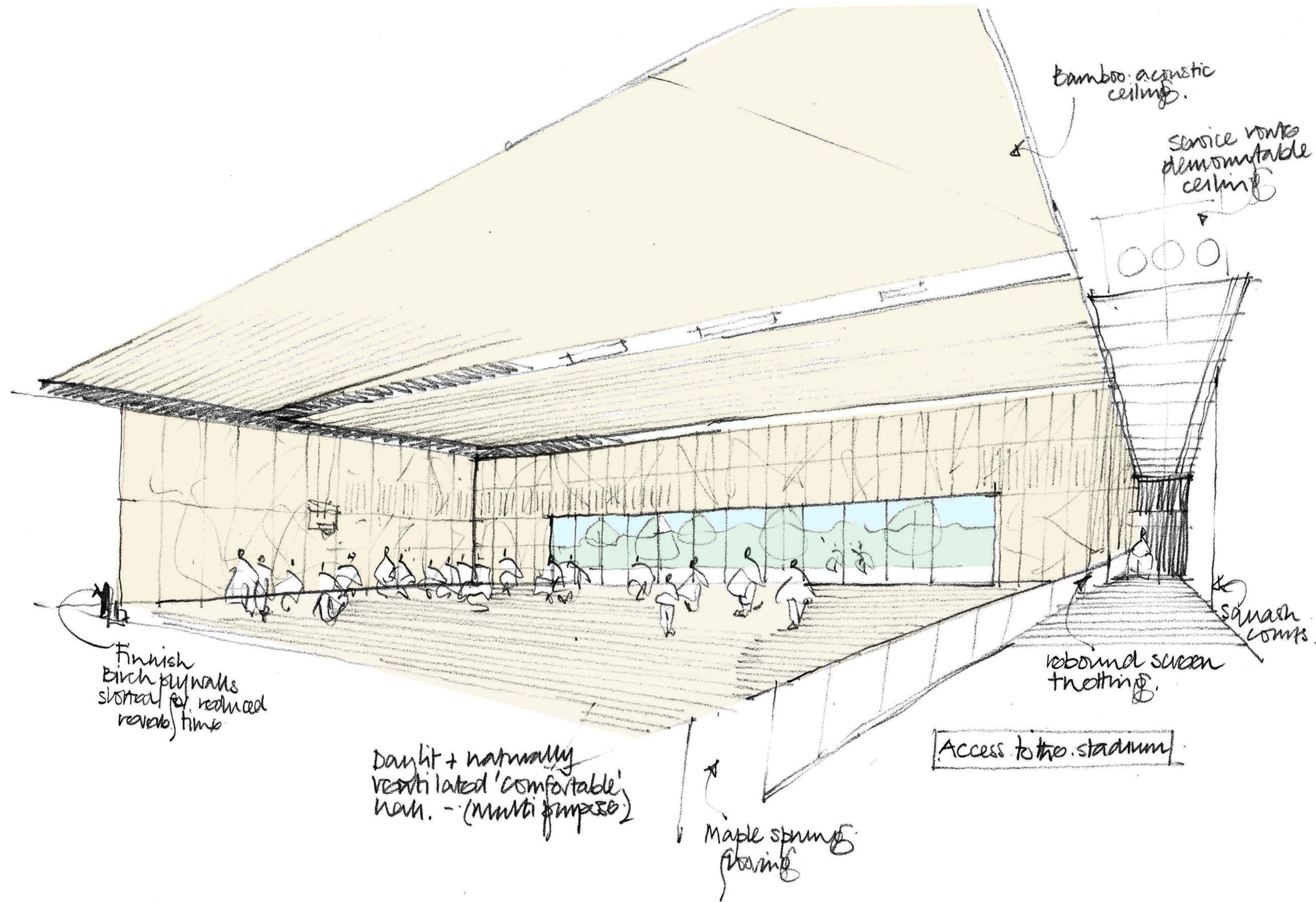
SPORT & LEISURE PARK WINCHESTER



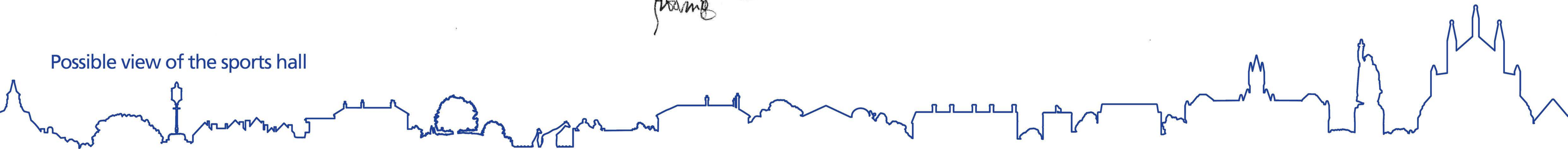
Possible view of the main swimming pool



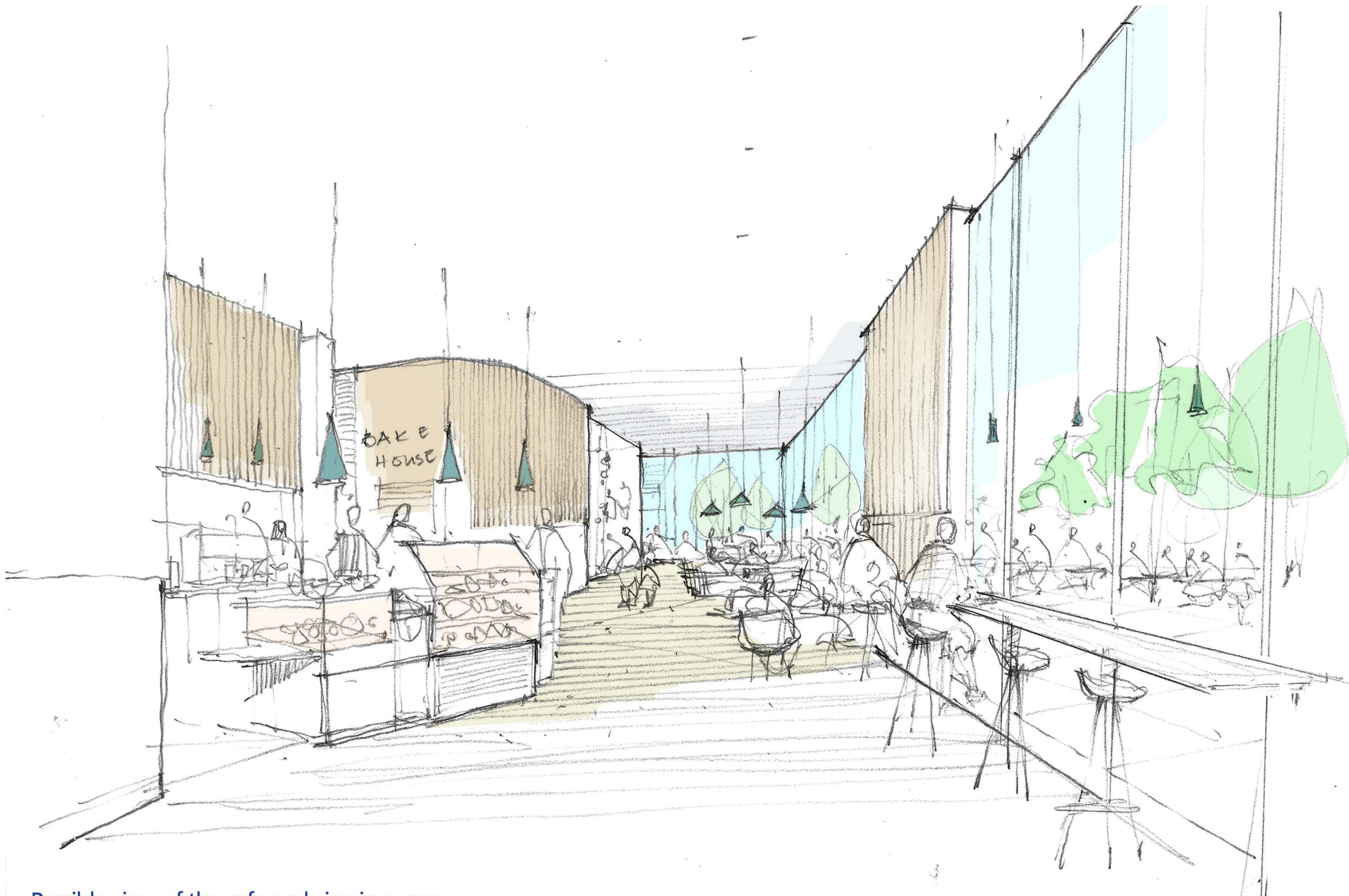
SPORT & LEISURE PARK WINCHESTER



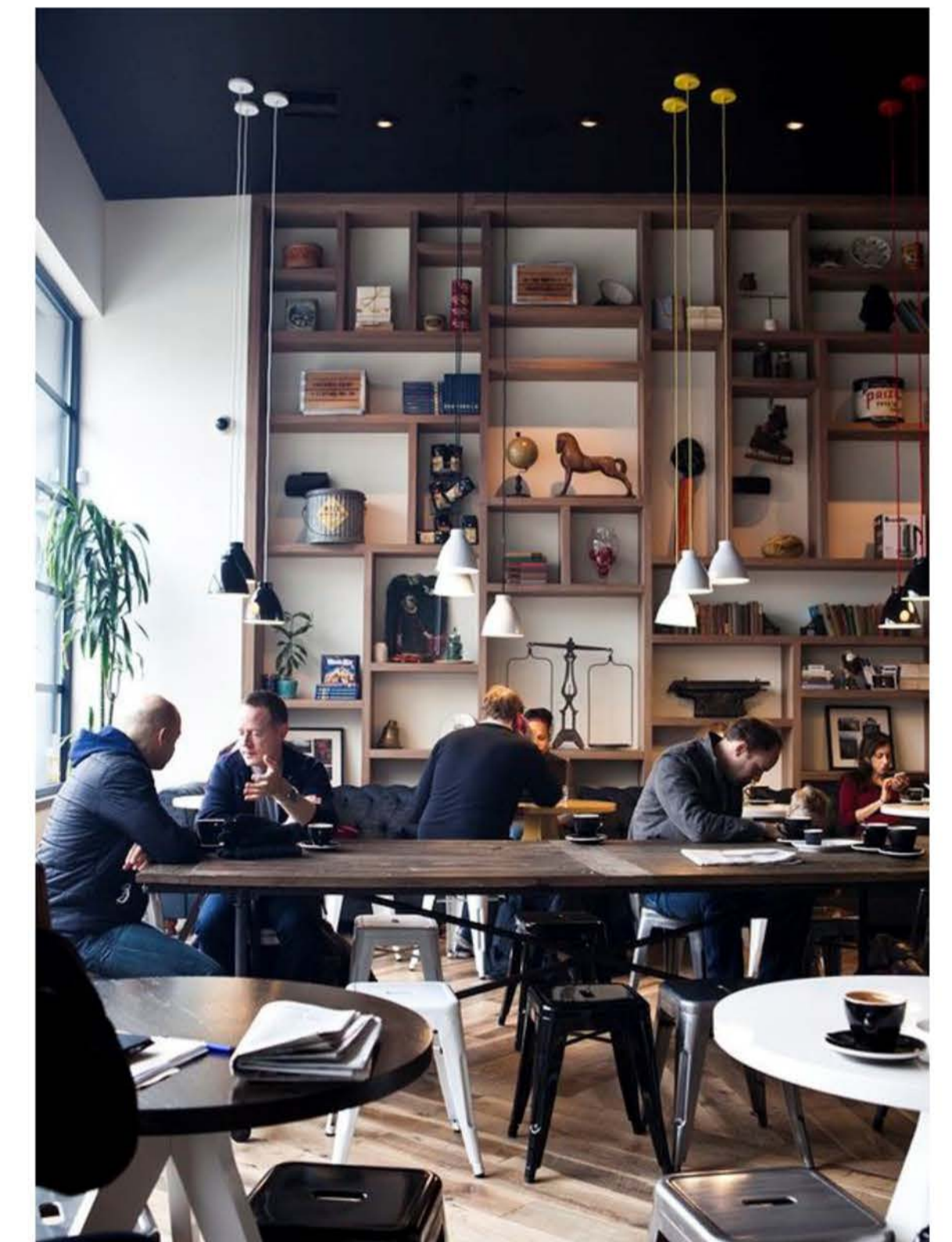
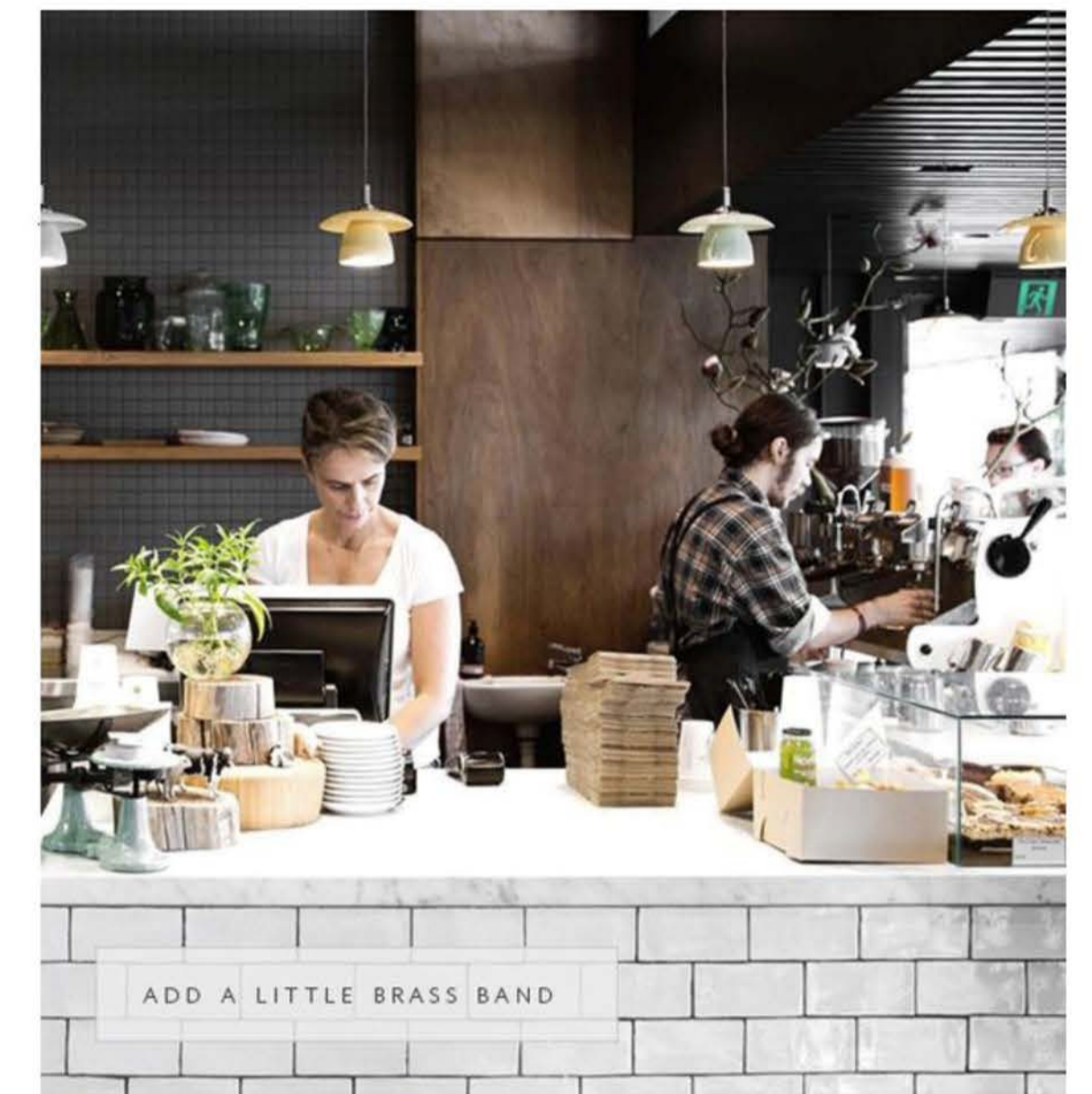
Possible view of the sports hall



SPORT & LEISURE PARK WINCHESTER

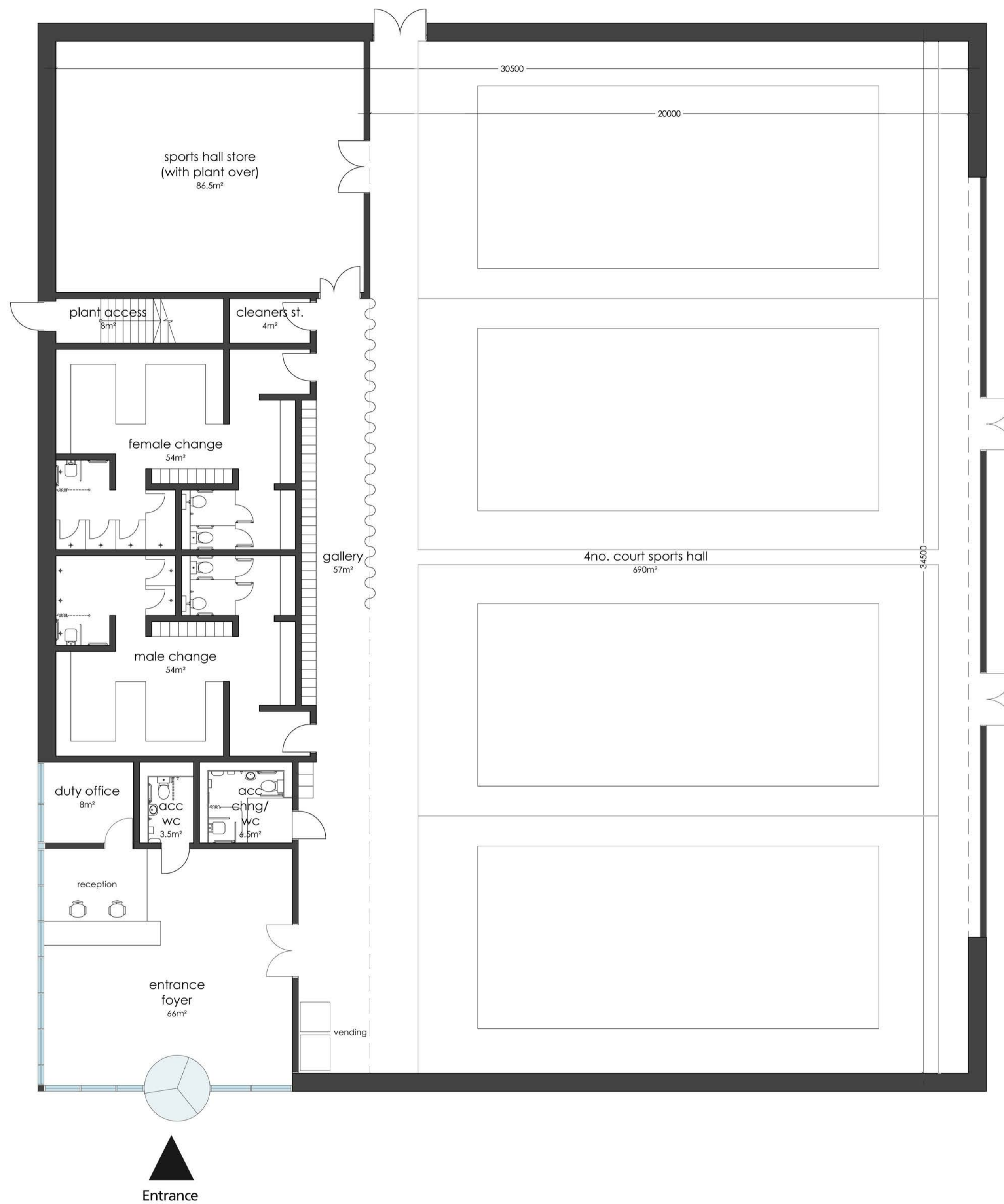


Possible view of the cafe and viewing area



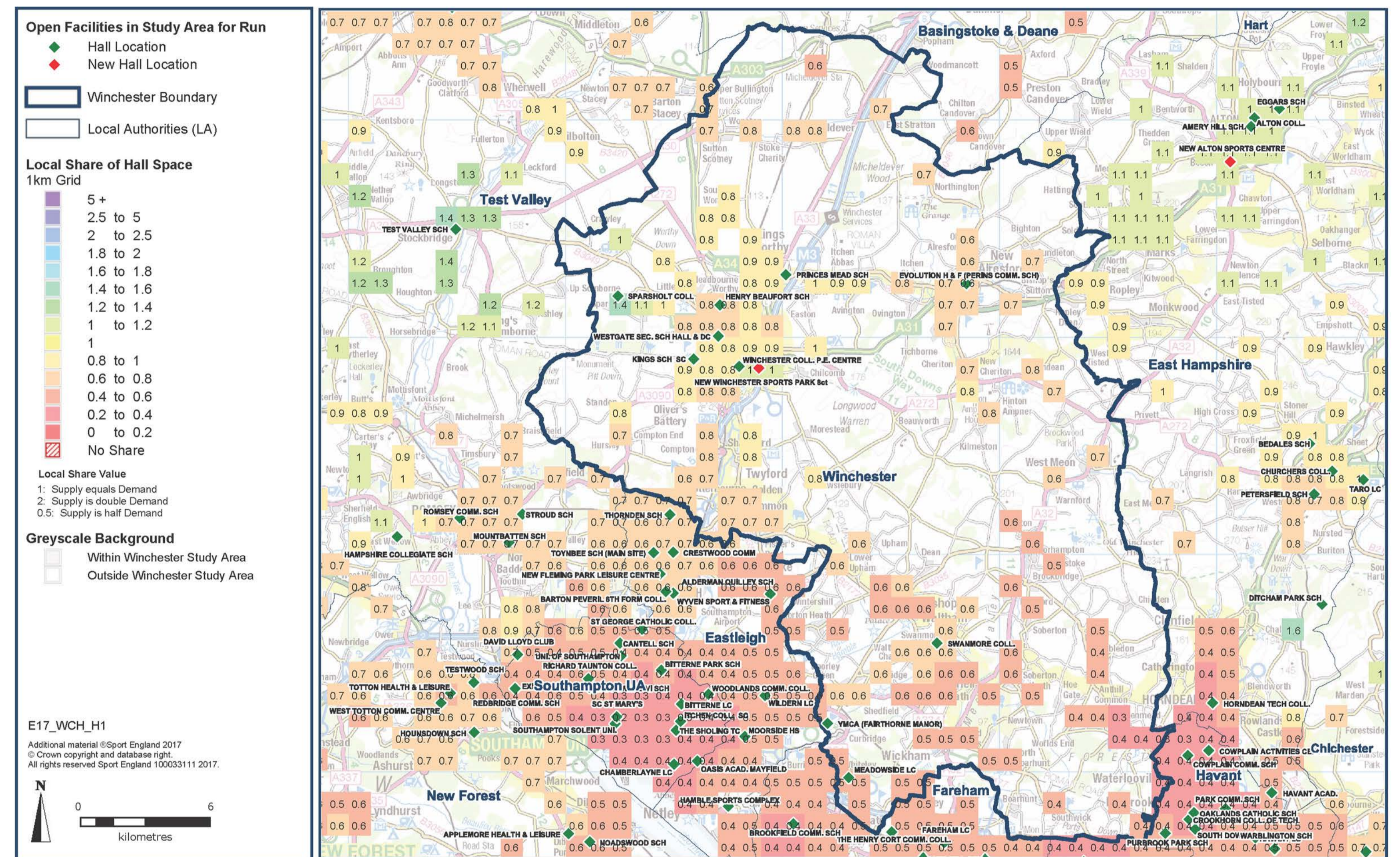
SPORT & LEISURE PARK WINCHESTER

4-Court Sports Hall



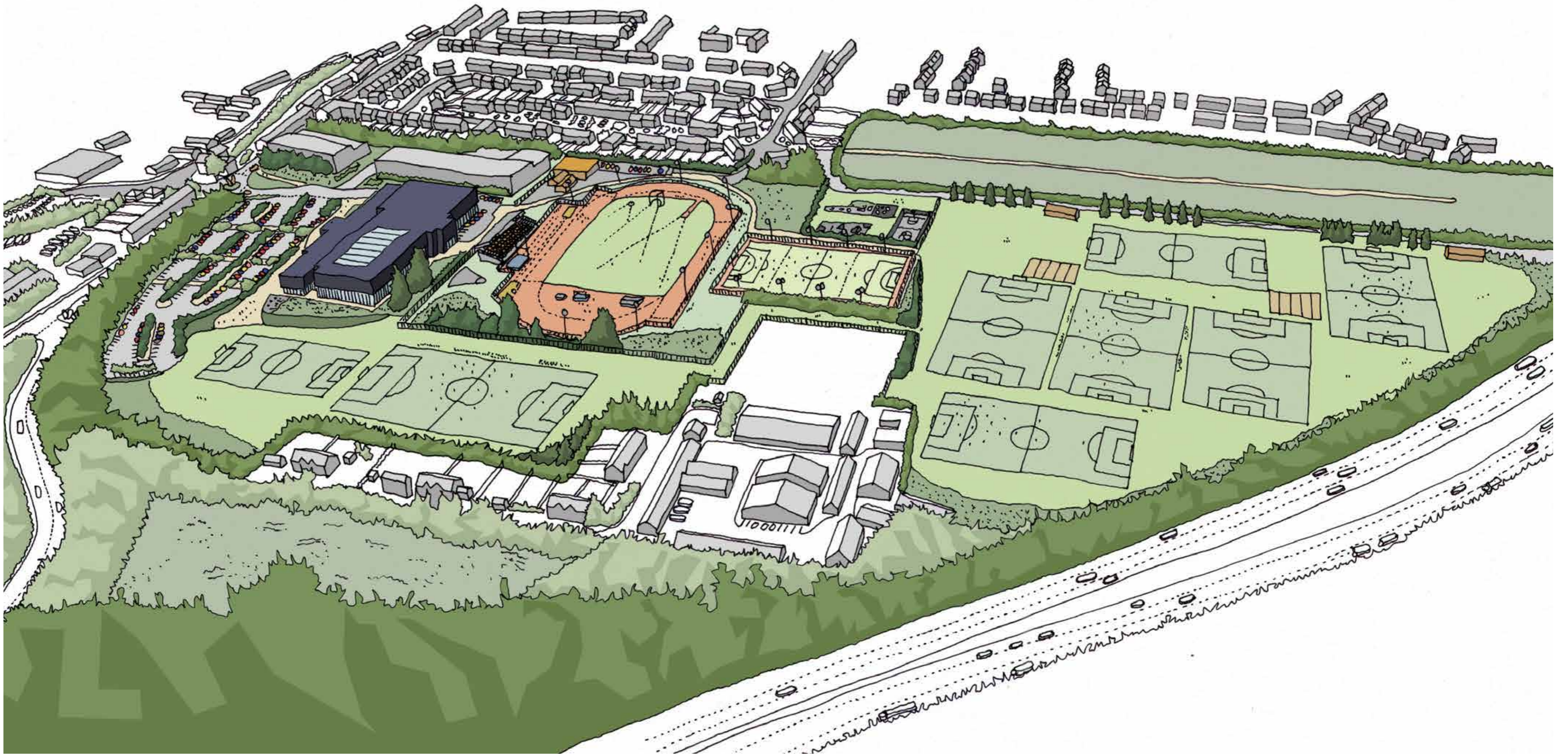
Facility Planning Model - Halls Local Share for Winchester
Run 3: 2037 Population Projections and New 8 Court Bar End Centre

Share of badminton courts divided by demand. Data outputs shown thematically (colours) and aggregated at 1km square (figure labels).



SPORT & LEISURE PARK WINCHESTER

THANK YOU FOR TAKING THE TIME TO ATTEND THIS PUBLIC EXHIBITION.



What happens next?

The Council will continue to work with adjoining land owners to ensure the deliverability of this emerging strategy as we do not control all aspects within the boundary to this UDF.

A detailed engagement process is being followed to help design the Sport & Leisure Centre and a consultation with further detail will be made part of the planning application process next year.

If you would like to be updated on the progress of this exciting project, please use the following email address:

consultation@stridetreglown.com

Winchester City Council is looking for as much feedback as possible from those interested in the future development of the Sports & Leisure Park. Local residents, those involved in sports and community activities, and people from across the district are all encouraged to provide their views.

The completed online survey and comments should be received no later than Sunday 21st January 2018.

To review these presentation boards online, please visit:

www.winchester.gov.uk/projects/5740/replacement-leisure-centre-project

To complete the online questionnaire, please visit:

<https://winchester.citizenspace.com/policy/sport-leisure-park>

STRIDE TREGLOWN

LA
architects



UNIVERSITY OF
WINCHESTER

THE PINDER TRUST



Winchester
City Council

If you wish to make a comment or if you wish to be kept informed please email consultation@stridetreglown.com