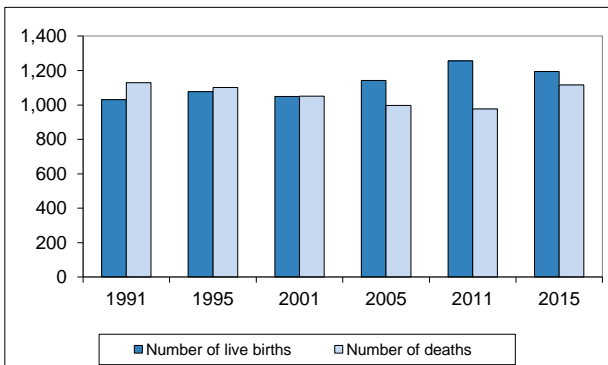


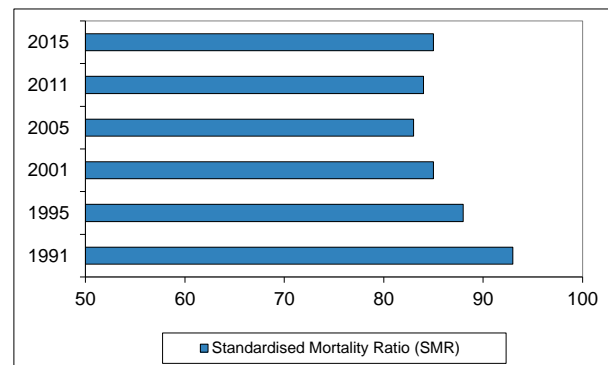
Trends in births and deaths for Winchester since 1991

Number of births and deaths



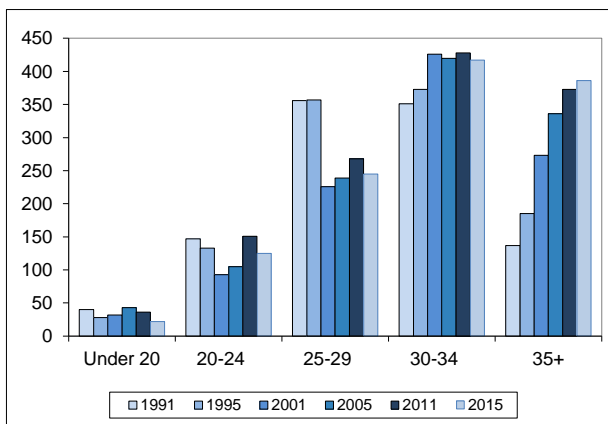
The number of births were at their lowest level over the period around 1991. Since 2005 births have exceeded deaths in Winchester.

Trends in death statistics

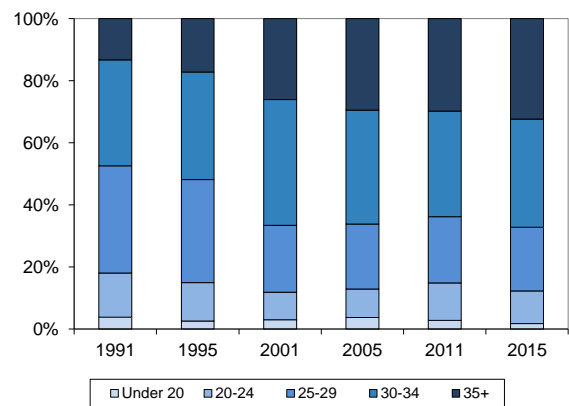


The standardised mortality ratio for Winchester has been consistently below the National average.

Trends in births by age of mother

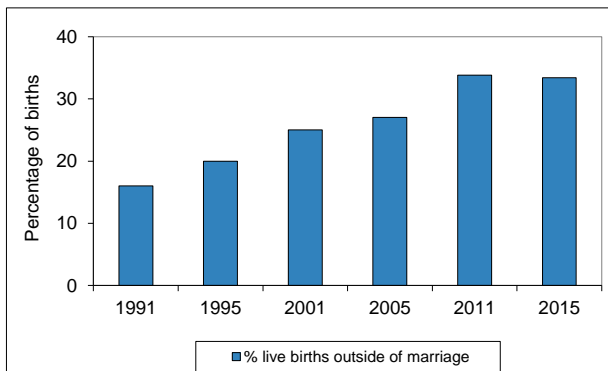


The distribution of births by age of mother has changed over the period. More births are now being recorded to older mothers.



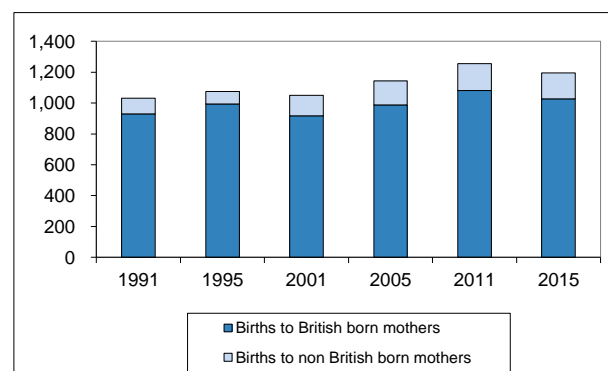
The shift in the age of mothers at birth can be seen above. The balance has moved towards the older age groups.

Trends in births out of wedlock



The majority of births in Winchester occur within marriage. However, the number of births outside of marriage has been increasing since 1991.

Trends in births by birth status of mother



Some of the increase in births since 2001 can be attributed to births to foreign born mothers. By 2015 such births accounted for 14.0% of all births.

Table of figures

	1991	1995	2001	2005	2011	2015
Number of live births	1,031	1,078	1,050	1,143	1,256	1,195
% live births to mothers aged 35+	13.3	17.2	26.0	29.4	24.8	32.3
% live births outside of marriage	16.0	20.0	25.0	27.0	33.8	33.4
% live births born to non British born mothers	9.9	7.7	12.6	13.6	13.9	14.0
Number of deaths	1,129	1,102	1,052	997	977	1,116
Standardised Mortality Ratio (SMR)	93	88	85	83	84	85

Notes and Source

Notes: The SMR is a ratio of the number of deaths expected if the population experienced the same age specific death rates as England and Wales. A value of less than 100 indicates lower mortality than expected.

Source: Office for National Statistics (ONS) Vital Statistics

Published by Research and Intelligence, Winter 2016