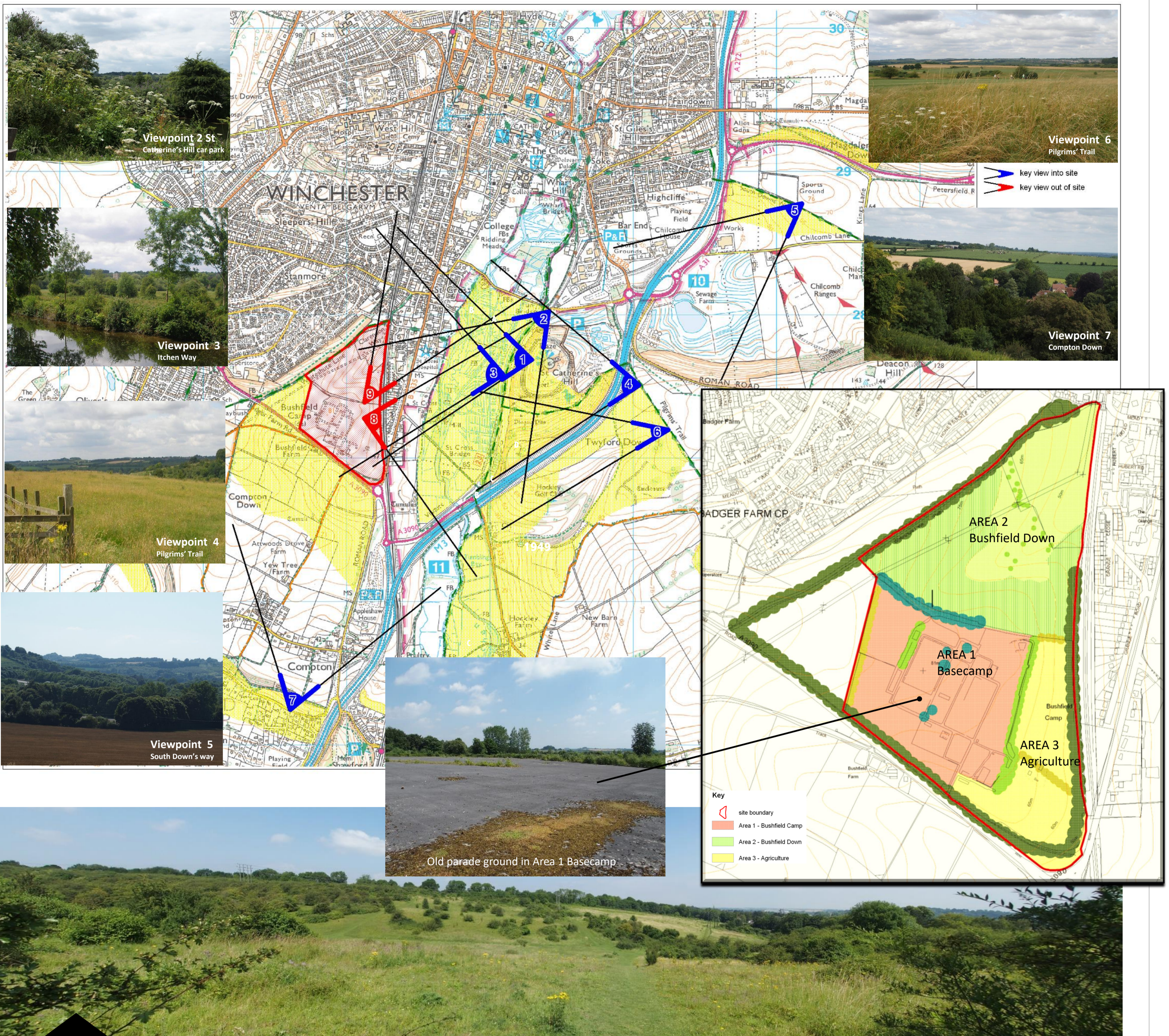




**VIEW LOOKING IN FROM ST CATHERINE'S HILL** View looking across the Itchen valley to Bushfield camp from just below the summit of St Catherine's Hill with the river Itchen in the valley below and St Cross Hospital to the right. The Basecamp site, Area 1, is largely concealed by belts of trees including the beech hanger and sits well below the skyline. The remaining areas of the site, Areas 2 and 3 are open and exposed.



**VIEW LOOKING OUT TOWARDS WINCHESTER** View looking out over Bushfield Down, Area 3, towards central Winchester. The character of this area is dominated by an attractive mixture of encroaching hawthorn scrub and rough grassland. A network of paths runs throughout this area and good views of Winchester Cathedral can be obtained from higher ground.