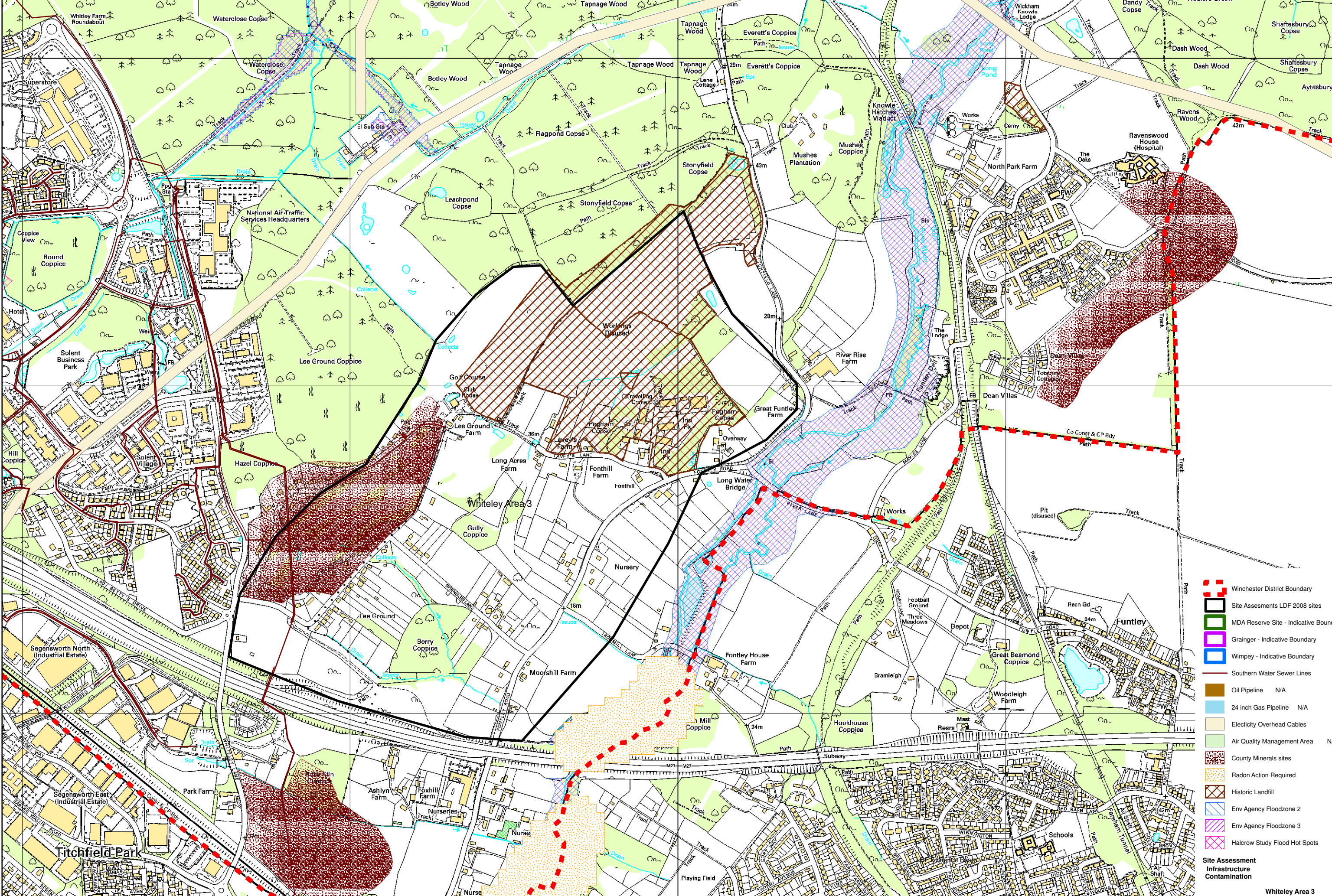
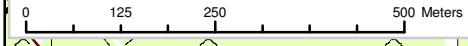


This map is reproduced from Ordnance Survey material with the permission of Ordnance Survey on behalf of the Controller of Her Majesty's Stationery Office. Crown copyright. Unauthorised reproduction infringes Crown copyright and may lead to prosecution or civil proceedings.
OS License No. 00018301 © Winchester City Council GIS 2009



- Winchester District Boundary
 - Site Assessments LDF 2008 sites
 - MDA Reserve Site - Indicative Boundary
 - Grainger - Indicative Boundary
 - Wimpey - Indicative Boundary
 - Southern Water Sewer Lines
 - Oil Pipeline N/A
 - 24 inch Gas Pipeline N/A
 - Electricity Overhead Cables
 - Air Quality Management Area N/A
 - County Minerals sites
 - Radon Action Required
 - Historic Landfill
 - Env Agency Floodzone 2
 - Env Agency Floodzone 3
 - Halcrow Study Flood Hot Spots
- Site Assessment Infrastructure Contamination**
- Whiteley Area 3**