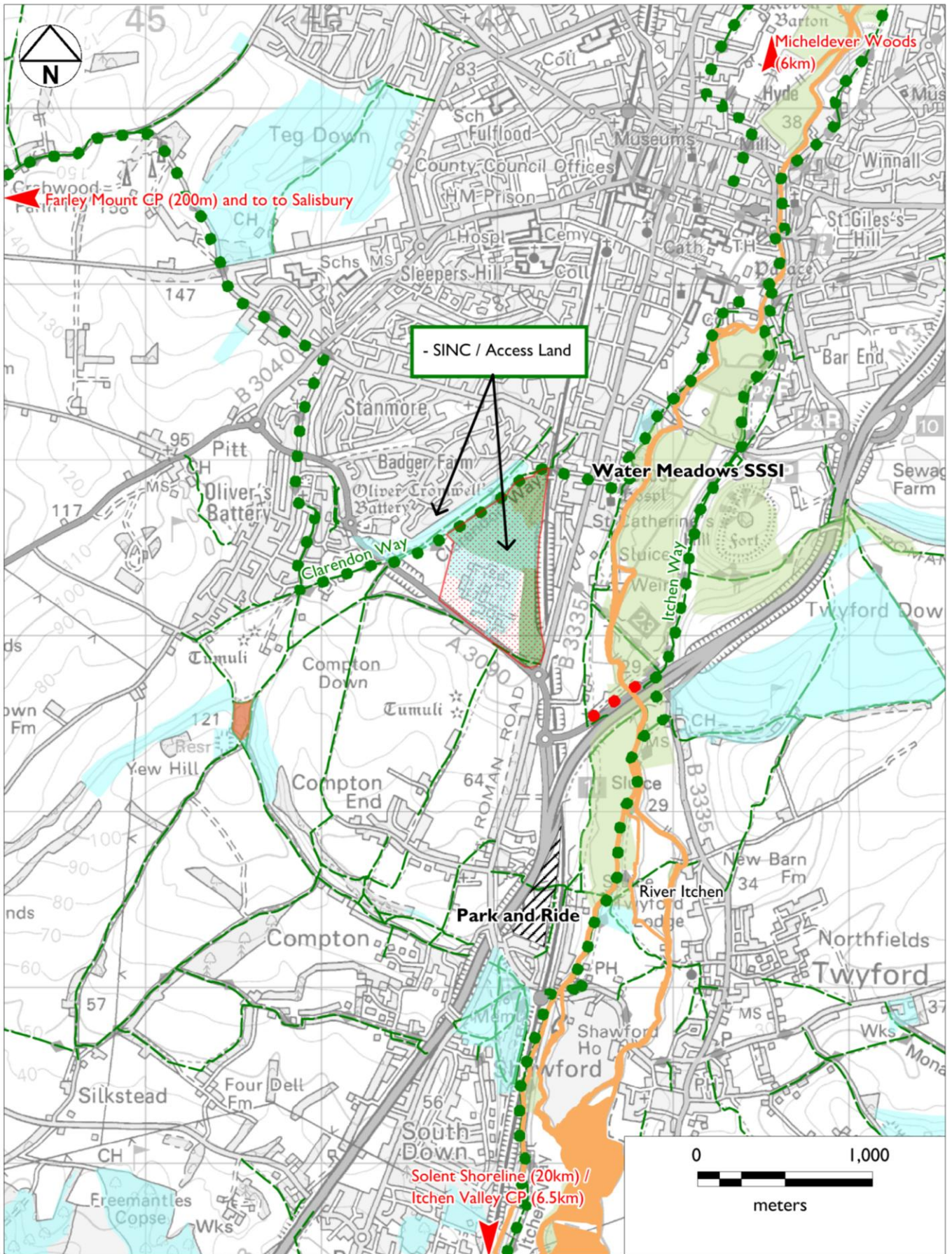

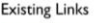







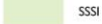
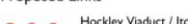
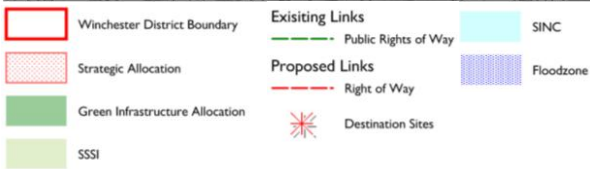
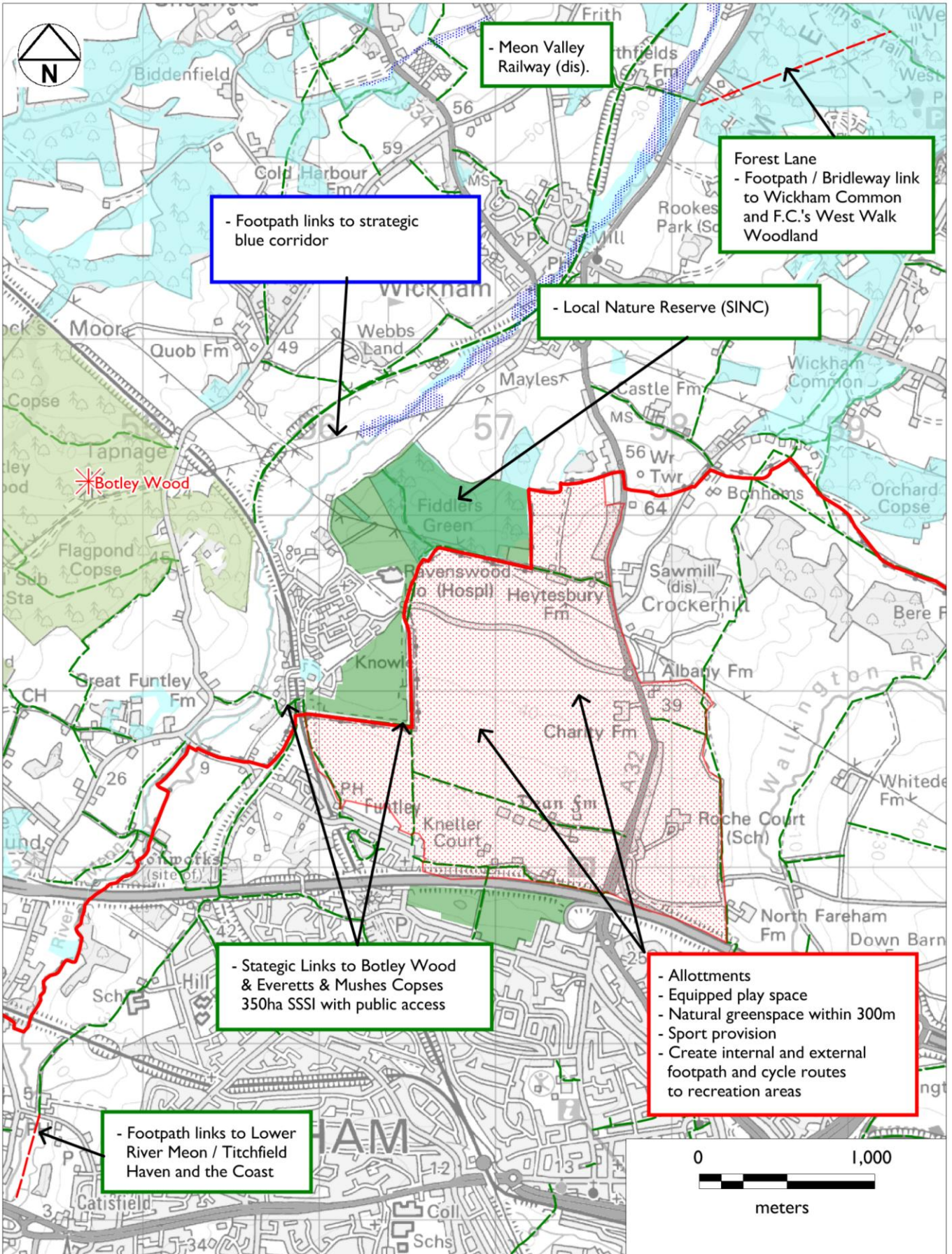


Map 7
District Wide Strategic Proposals

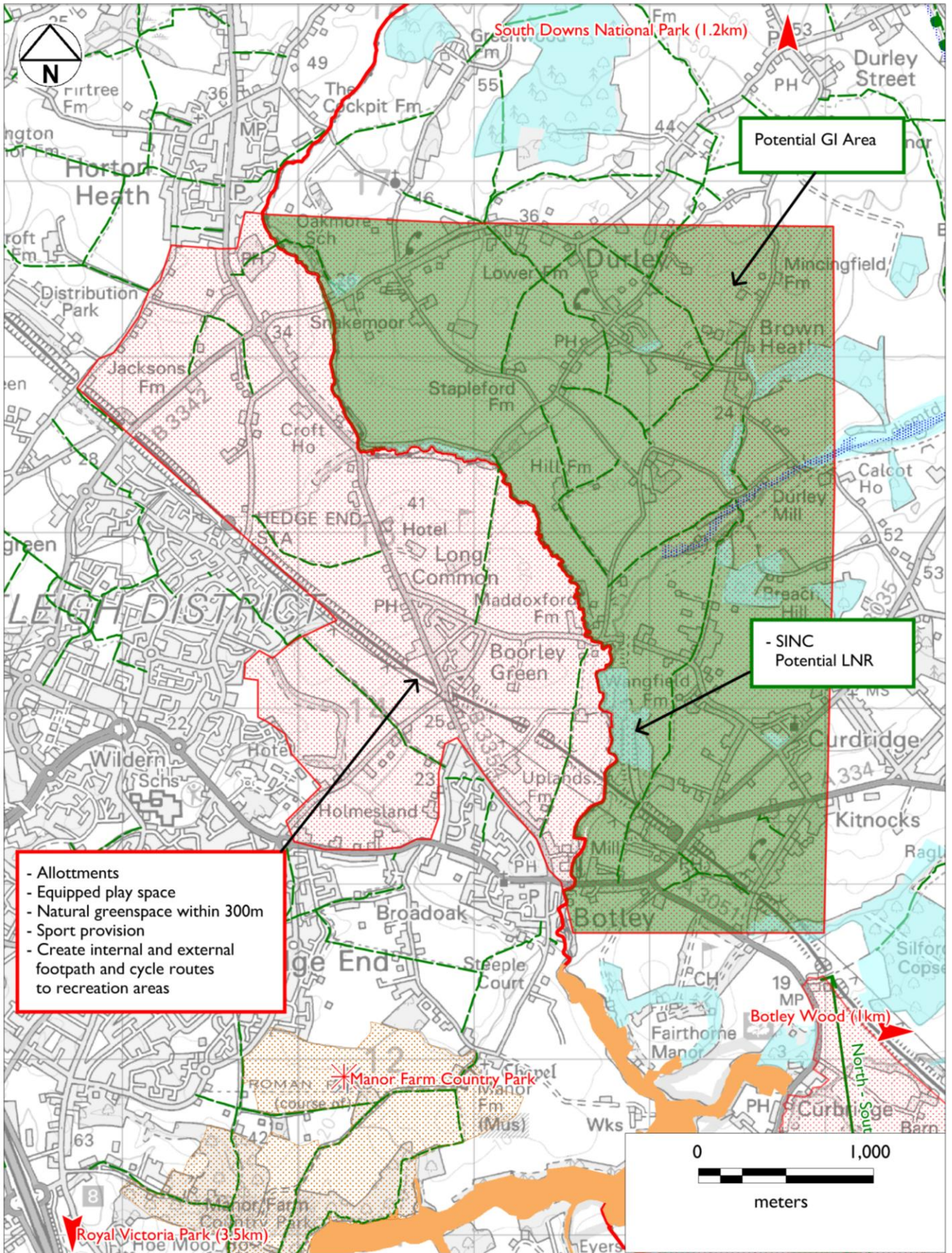


- | | | |
|---|---|---|
|  SAC |  SINC |  Butterfly Conservation Site |
|  Strategic Allocation |  Existing Links
Public Rights of Way |  Park and Ride |
|  Green Infrastructure Allocation |  Long Distance Paths |  Destination Site |
|  SSSI |  Proposed Links
Hockley Viaduct / Itchen Nav Potential Link | |

Map 8
Bushfield Camp Strategic
Allocation



**Map 9
Fareham SDA**



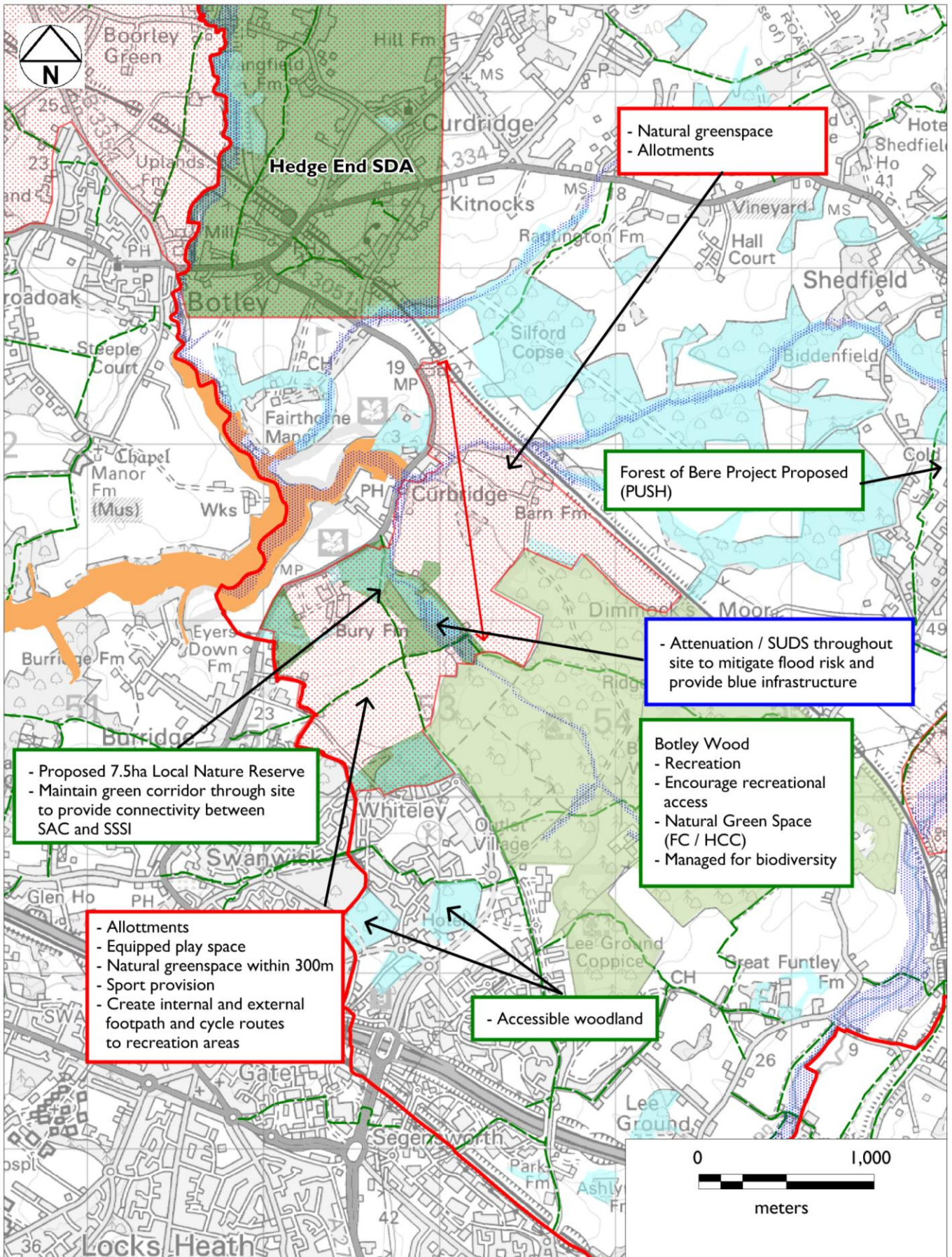
- Allotments
- Equipped play space
- Natural greenspace within 300m
- Sport provision
- Create internal and external footpath and cycle routes to recreation areas

Potential GI Area

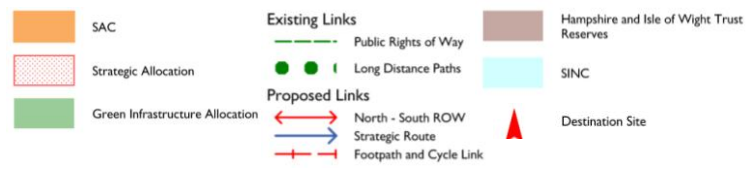
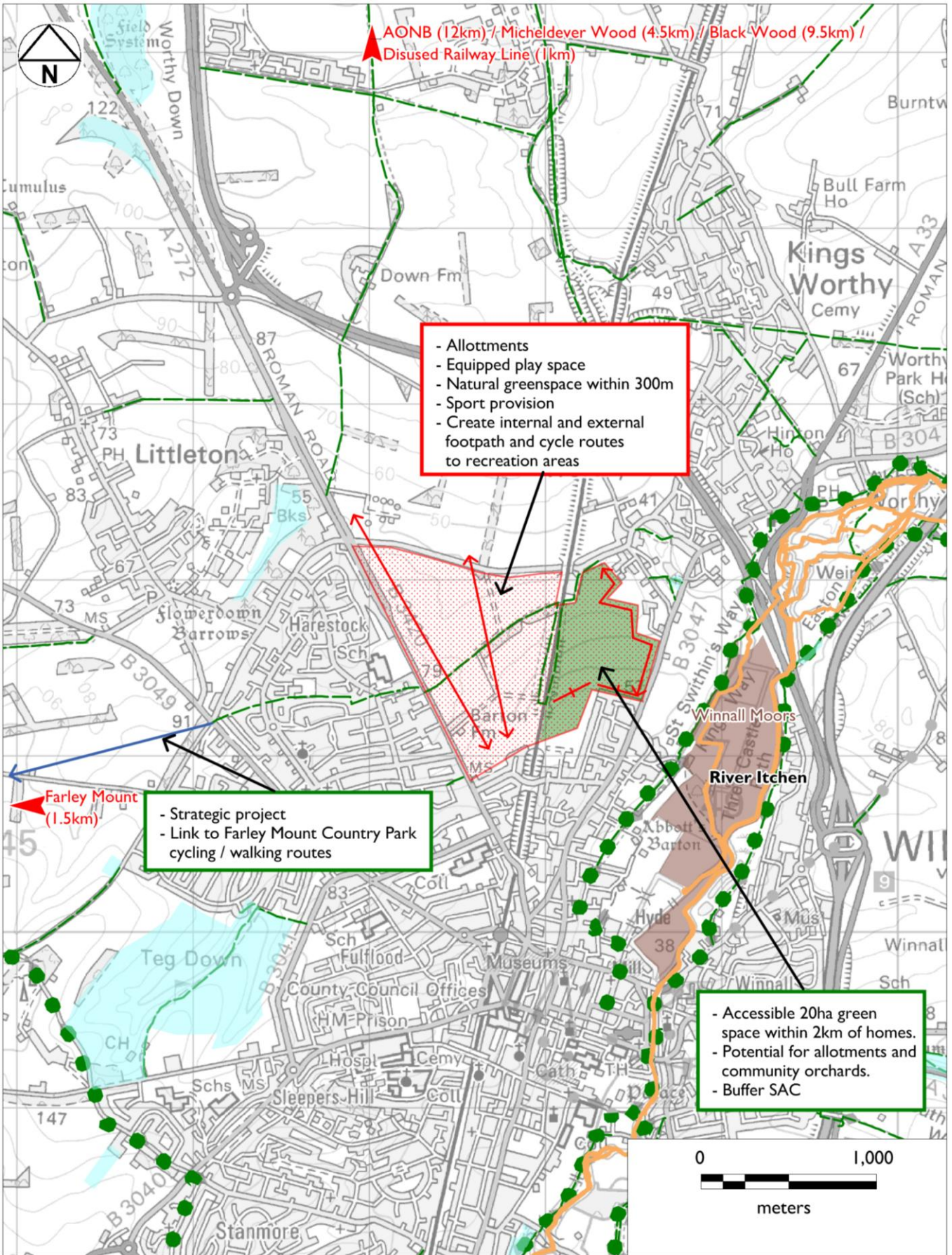
- SINC Potential LNR

- | | | | | | |
|--|---------------------------------|--|----------------------|--|---------------------|
| | Winchester District Boundary | | SINC | | Destination Site |
| | Strategic Allocation | | Existing Links | | Floodzone |
| | Green Infrastructure Allocation | | Public Rights of Way | | Long Distance Paths |
| | SAC | | Destination Site | | |

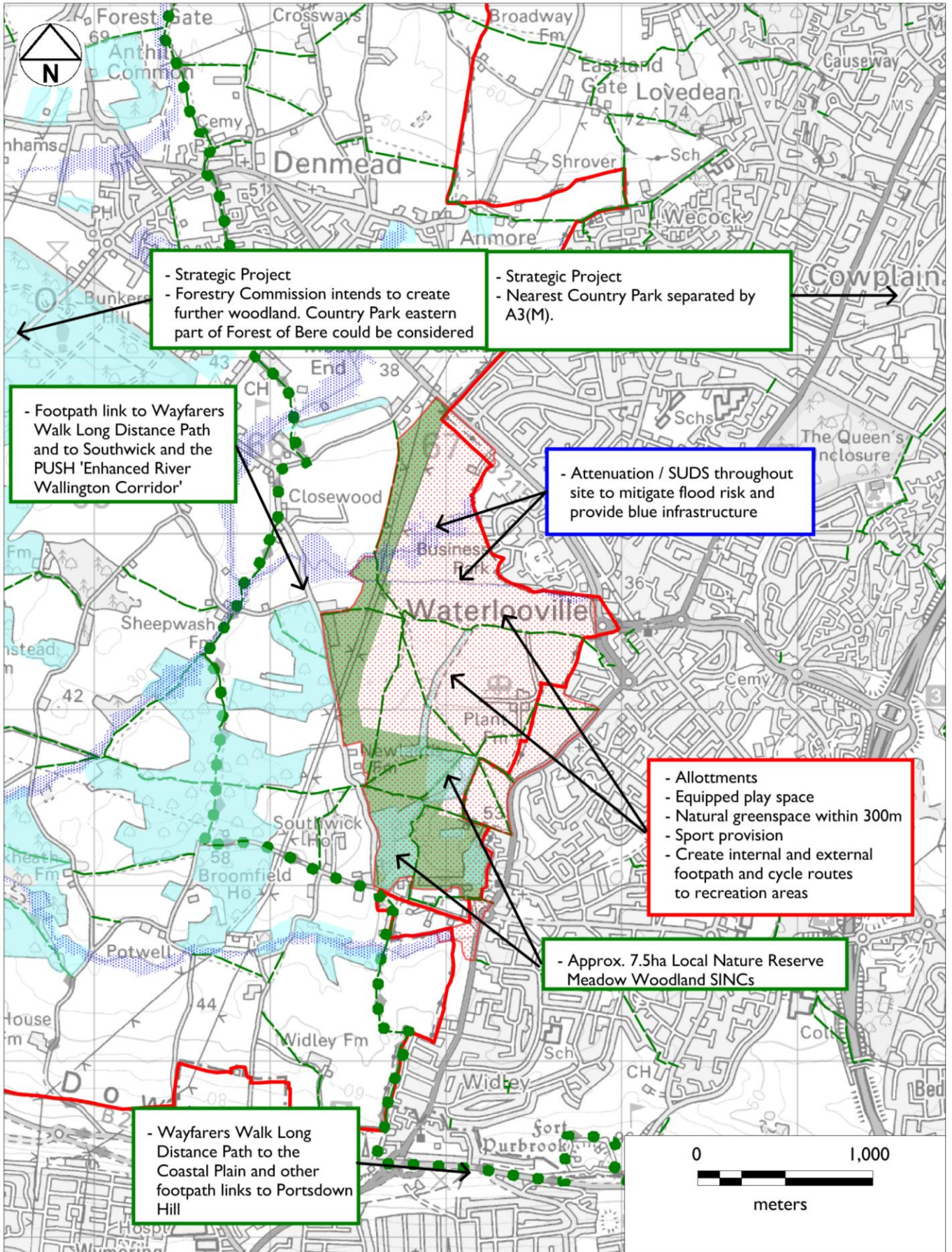
**Map 10
Hedgend SDA**



**Map 11
North Whiteley Strategic Allocation**



Map 12
North Winchester Strategic Allocation



**Map 13
West of Waterlooville Strategic Allocation**