

Regulation 18 Consultation Statement Part 2

Winchester District Local Plan Part 2: Development Management and Site Allocations Publication (Pre-Submission)



Winchester District Local Plan Part 2 Regulation 18 Consultation Statement - Part 2

Contents	Page
1.0 Introduction	3
2.0 Consultation and Engagement	5
3.0 Consultation Comments on the Draft LPP2	7

Appendices

Appendix 1: Public Notice published 22 October 2014	10
Appendix 2: Example Letter to Consultation Persons and Bodies	11
Appendix 3: Persons and organisations notified by emails and letter	13
Appendix 4: Local Plan eNewsletter – September 2014	16
Appendix 5: Press Release - 10 th October 2014	17
Appendix 6: eNewsletter October 2014 & October Update editions	18
Appendix 7: Advertisement in Mid Hampshire Observer dated 29/10/14	21
Appendix 8: Parish Connect e-Newsletter November 2014	22
Appendix 9: Examples of Publicity Material around the Settlements	24

Have Your say on the
Winchester District* Local Plan Part 2

Public Consultation 24 October – 5 December 2014
Find out about what is proposed and how you can comment

Exhibitions coming to a venue near you:

Date	Exhibition Venue	Time
6 Nov	Waltham Chase Village Hall Winchester Road SO32 2LX	3.30pm – 7.30pm
7 Nov	Alresford Community Centre West Street SO24 9AG	3.00pm – 7.30pm
8 Nov	Bishops Waltham Kings Church West Street SO32 1AA	10.00am – 4.00pm
10 Nov	Kingsworthy Tubbs Hall Fraser Road SO23 7PJ	2.30pm – 7.30pm
12 Nov	Winchester Discovery Centre Jewry Street SO23 8SB	3.00pm – 8.30pm
13 Nov	Wickham Community Centre Mill Lane PO17 5AL	3.30pm – 7.30pm
14 Nov	Colden Common Community Centre St Vigor Way SO21 1UU	2.00pm – 8.00pm
14 Nov	Swanmore Village Hall New Road SO32 2PF	3.30pm – 7.00pm**
15 Nov	Swanmore Village Hall New Road SO32 2PF	10.00am – 4.00pm
19 Nov	Denmead Community Centre School Lane PO7 6LU	6.00pm – 7.30pm

**WCC Officers not present

*excluding the South Downs National Park

 Winchester City Council



1.0 INTRODUCTION

Purpose of the Consultation Statement

- 1.1 This Consultation Statement follows from the publication of the first draft of the Local Plan Part 2 – Development Management and Site Allocations (LPP2) for consultation. It sets out what publicity was undertaken to draw attention to the opportunity to comment on the draft plan and the how the consultation and engagement was carried out. It also summarises how the comments received, that have influenced revisions to plan, have been dealt with. This statement should be read with the 'Part 1' consultation statement to understand the full range of consultation and engagement that was carried out during the Regulation 18 stage of plan preparation.

Legislative Requirements

- 1.2 The preparation of LPP2 must comply with the National Planning Policy Framework (NPPF) and the Town and Country Planning (Local Planning) (England) Regulations 2012. Regulation 18 represents the first statutory stage in preparing a local plan. It specifies the requirements for who must be notified of the preparation of the plan, that they must be invited to comment on its content and that their comments must be taken into account. The purpose of this Statement is to set out how following early, meaningful and pro-active engagement with local communities, businesses and other organisations in the preparation of the Plan, the City Council has also carried out consultation on the Consultation Draft LPP2, as advised by the NPPF (paragraph 155).

The Town and Country Planning (Local Planning) (England) Regulations 2012

Preparation of a local plan

18.—(1) A local planning authority must—

- (a) notify each of the bodies or persons specified in paragraph (2) of the subject of a local plan which the local planning authority propose to prepare, and
- (b) invite each of them to make representations to the local planning authority about what a local plan with that subject ought to contain.

(2) The bodies or persons referred to in paragraph (1) are—

- (a) such of the specific consultation bodies as the local planning authority consider may have an interest in the subject of the proposed local plan;
- (b) such of the general consultation bodies as the local planning authority consider appropriate; and
- (c) such residents or other persons carrying on business in the local planning authority's area from which the local planning authority consider it appropriate to invite representations.

(3) In preparing the local plan, the local planning authority must take into account any representation made to them in response to invitations under paragraph (1).

Statement of Community Involvement

- 1.3 When the Plan is submitted for examination the Inspector will consider whether the public consultation has generally accorded with the strategy for involving the community as set out in the Statement of Community Involvement (SCI). The Council adopted the current SCI in January 2007. This document sets out how the Council will consult and involve the local community and who will be consulted. The SCI sets out a range of methods for consultation and involvement and states that different techniques will be used for different purposes. In addition to the methods described the SCI refers to the use of existing networks. Although the Winchester Local Strategic Partnership no longer exists the constituent bodies and organisations involved are on the Local Plan consultee database and have been included in the consultations on the draft LPP2. The SCI refers to opportunities to contribute to planning documents being well publicised, and to the use of a database of consultees being maintained and how people can apply to be added to the list to be kept informed. The SCI refers to the types of people and organisations, including those who the Council is legally obliged to consult (including Town and Parish Councils) and others who may be consulted.
- 1.4 Specifically on preparing a draft plan the SCI sets out as follows:
“Production Stage: This stage involves producing options and consulting on them. Here the Council will publicise the issues identified at the Pre-Production stage and the potential measures for addressing them.
- Prior to the formal participation process, there will be an early opportunity to be involved and to participate in developing and refining suitable options. The methods of doing this will depend on the type of Development Plan Document (DPD) and the area it covers but may include a ‘Preferred Options Report’, or ‘Issues Report’, or a Summary Leaflet which can be distributed within areas particularly affected. This will enable an informal stage of consultation, prior to the statutory stage (see below), which will allow the Council to assess comments and responses to its Preferred Options report
 - A variety of consultation and engagement methods will be used, as appropriate to the type and subject matter of the DPD. Such methods might include focus group meetings, leaflets, seminars and exhibitions/displays at relevant and accessible locations within the District
 - The statutory consultees will be notified and invited to make contributions, in accordance with Regulation 25.
- 1.5 Although the Regulations relating to Local Plans have changed, what was regulation 25 at the time the SCI was adopted generally equates to the current regulation 18. It is therefore considered that an appropriate range of methods have been used, as described in this report (and the Part 1 report published in 2014), to ensure that the public consultation has generally accorded with the strategy for involving the community as set out in the SCI and thus meets the legal compliance requirements.

2.0 CONSULTATION AND ENGAGEMENT

Notification of publication of the Draft LPP2 for Consultation

- 2.1 Following a decision by the full Council at a special meeting on 2nd October 2014, a Public Notice was published in the Mid Hampshire Observer on 22nd October advertising the publication of the Consultation Draft Plan, and supporting documents, for comment from 24 October to 5 December (see Appendix 1).
- 2.2 Notification by letter (see example at Appendix 2) and email was circulated to all persons and bodies on the Council's Local Plan Consultation Database (see Appendix 3).
- 2.3 Those on the mailing list for the Local Plan e-Newsletter had already been given advance warning and notice of the report to the Cabinet in the September edition (see Appendix 4).
- 2.4 A press release was also issued on 10th October 2014 and published on the Council's website (see Appendix 5).
- 2.5 The Plan together with supporting material was published on the Council's website with links from the home page.

Consultation Events

- 2.6 Following from the earlier work undertaken by and in conjunction with the Parish Councils, assistance was sought in publicising the consultation period and the events taking place in the settlements where development is proposed. The events ran from 23 October to 19 November 2014 and involved a series of briefings and presentations at meetings together with exhibitions summarising the content of the plan, how it has been arrived at and how to comment on it.
- 2.7 Publicity for the consultation events took several forms including further editions of the Local Plan e-Newsletter during October 2014 (Appendix 6), an advertisement in the Mid Hampshire Observer edition dated 29/10/14 (see Appendix 7) and the Parish Connect e-Newsletter November 2014 edition (Appendix 8).
- 2.8 Parish Councils also assisted with the publicity through a variety of means including displaying banners, putting posters on village notice boards, leaflets delivered to every house in the parish, items in parish newsletters and on their websites. In Winchester Town a leaflet was included with the Mid Hampshire Observer edition dated 29 October 2014. Examples of the publicity carried out around the settlements are included at Appendix 9 (NB this is not a fully comprehensive collection) as follows:
 - Bishop's Waltham: Poster on Parish Council notice boards, newsletter delivered to households and item in November edition of Bishop's Waltham Parish News.
 - Colden Common: Leaflet delivered to Households.

- Kings Worthy: Poster on Parish Council notice boards and leaflet delivered to households.
- New Alresford: Article in Alresford and Itchen Valley Forum – November 2014 – Issue 96, leaflet delivered to all Alresford households and banner displayed at West Street by pedestrian crossing.
- Swanmore: Banners displayed outside Swanmore C of E Primary School.
- Waltham Chase: Extract from Parish Magazine for Shedfield, Shirrell Heath and Waltham Chase, November 2014.
- Wickham: A5 Leaflet delivered to households.
- Winchester: Poster advertising WinACC meeting and A5 leaflet delivered to households with Mid Hampshire Observer (Issue 714) 29/10/14.

Table: List of Exhibitions and other Events on Draft LPP2

Date	Event & Venue	Time
23 Oct	District Briefing – Guildhall, Winchester	7.00pm – 8.30pm
3 Nov	Presentation - Whiteley Town Council meeting	7.15pm
6 Nov	Exhibition - Waltham Chase Village Hall	3.30pm – 7.30pm
7 Nov	Exhibition - Alresford Community Centre	3.00pm – 7.30pm
8 Nov	Exhibition - Bishops Waltham Kings Church	10.00am - 4.00pm
10 Nov	Exhibition - Kings Worthy Tubbs Hall	2.30pm - 7.30pm
11 Nov	Presentation – WinAcc Public Meeting, United Church	7.30pm – 9.30pm
12 Nov	Exhibition - Winchester Discovery Centre	3.00pm – 8.30pm
13 Nov	Exhibition - Wickham Community Centre	3.30pm – 7.30 pm
14 Nov	Exhibition - Colden Common Community Centre	2.00pm – 8.00pm
14 Nov	Exhibition - Swanmore Village Hall (not WCC officers)	3.30pm – 7.00pm
15 Nov	Exhibition - Swanmore Village Hall	10.00am – 4.00pm
19 Nov	Exhibition - Denmead Community Centre	6.00pm – 7.30pm
19 Nov	Presentation – Denmead Parish Council Meeting	7.30pm

- 2.9 The events were generally well attended and copies of the exhibition boards were posted on the City Council's website, made available at reception in the City Offices, in the Winchester Guildhall and at some Parish Council offices. Due to the volume of attendees, and council officers being busy answering questions, precise headcounts were not possible but it is estimated that at least 1600 people attended the exhibitions over the period. At two of the exhibitions developers and their agents also gave displays of their proposals for the sites proposed as allocations in the Plan. These were at Kings Worthy and New Alresford where attendees were able to comment separately on the developer's displays.

3.0 CONSULTATION COMMENTS ON THE DRAFT LPP2

- 3.1 By the close of the consultation period comments were received from over 1,100 individuals and organisations. The following table presents an indication of how the representations were distributed across the Plan. Many people and organisations made multiple comments covering several topics or areas; the number of individual comments is therefore much higher.

Table: Number of Respondents and Comments Received

	Number of Respondents	Number of Comments
Total for whole plan	1128	2082
Split by chapter/topic		
Chapter 1 & 2	18	43
Winchester Town	108	227
Bishops Waltham	62	112
Colden Common	180	242
Kings Worthy	62	88
New Alresford	569	861
Swanmore	43	59
Waltham Chase	37	52
Wickham	69	136
Denmead	6	6
Small Rural Villages	14	20
South Hampshire Urban Areas	7	10
Development Management and Implementation and Monitoring	64	188
Appendices	3	4
General	23	24
SA/SEA/HRA	9	10

- 3.2 The comments were summarised and reported to a series of meetings of the Cabinet (Local Plan) Committee and published in full on the Council's website (<http://documents.winchester.gov.uk/LPP2/Default.aspx>).

- 3.3 The Cabinet (Local Plan) Committee, the reports and minutes of which are also published on the Council's website, considered the representations at their meetings as follows:

9 February 2015: [CAB2656\(LP\)](#) - general update following consultation.

12 March 2015: [CAB2670\(LP\)](#) - feedback on consultation responses relating to the sections of the Plan on Colden Common, Kings Worthy, Swanmore, Waltham Chase, Wickham and South Hampshire Urban Areas.

30 March 2015: [CAB2676\(LP\)](#) - feedback on consultation responses received on all other parts of the Plan, including the settlements of Winchester Town, Bishops Waltham, New Alresford, and Denmead, small rural villages and rural area, development management policies and any general representations relating to maps/appendices or other matters such as sustainability appraisal.

- 3.4 Many representations related to the site allocations; suggesting alternative sites for development and/or changes to settlement boundaries, or raising issues with the proposed allocations or policy wording. The Committee agreed that those comments would require further work to assess the matters raised in detail and to seek further advice as necessary, and for officers to report back to future meetings.
- 3.5 In addition to commissioning a number of further evidence studies and reports investigations were carried out with a number of organisations to understand the reasons for the comments and consider how concerns may be alleviated. Exchanges with the key ("statutory") consultees regarding proposed changes to the Plan's policies and supporting text took place and meetings were also held with representatives from Historic England, Natural England and Southern Water.
- 3.6 Informal meetings were held with the Parish Councils for the market towns and larger villages, initially to feedback the nature of the comments, discuss the local matters raised by the representations received and inform of the further work being carried out. Later informal meetings with the Parish Councils took place to discuss the proposed changes to the Plan's policies and supporting text. Exchanges and informal meetings were similarly held with the landowners / developers of the proposed site allocations and/or their agents.
- 3.7 Final reports summarising the further work undertaken and the responses to the representations are being reported to the Cabinet (Local Plan) Committee, and published on the Council's website, as follows:

16 September 2015: [CAB2711\(LP\)](#) - summarises the process followed in preparing the LPP2; the key changes recommended in response to the representations, and the outcome of further supporting evidence studies. The appendices to this report examine the responses received on some general parts of the Plan together with those for the settlements of Bishops Waltham, Colden Common, Denmead, Kings Worthy, Swanmore, Waltham Chase,

Wickham, the South Hampshire Urban Areas, and the Smaller Villages and Rural Area.

6 October 2015: [CAB2721\(LP\)](#) - considers reports relating to New Alresford, Winchester Town and the Development Management policies.

Appendix 1: Public Notice published 22 October 2014

Tel: 01962 859559

www.hantsdirect.com

22 / 10 / 2014 PAGE 23

What a Plonker!

Last week I wrote: "The home game against Sunderland will be a real test as Gus Poyet has produced a side that is very difficult to beat." As the fifth goal went in I desperately tried to seek anonymity and Sunday found me under the bedclothes shunning all forms of human contact. The pride which I initially felt when my thumbnail photograph appeared with the article was suddenly shattered by the realisation that I was a recognisable idiot.

When I finally surfaced today I was a little miffed to discover that I was greeted by the usual indifference; a definite blow to my ego.

The unbelievable deft play of Dusan Tadic, (even more remarkable after his appearance in the battle of Belgrade a few days earlier) and the telepathic understanding with Graziano Pelle up front catches the eye.

What however has become apparent as the season has progressed is the fact that the midfield trio that was retained during the summer chaos is now playing better than ever.

Jack Cork, Steve Davis and Morgan Schneiderlin represent a formidable trio who have been with the club for some time and have developed a magical understanding.



The effortless way they can individually advance into forward positions whilst being covered by their colleagues is seamless.

If this were not enough, to have a player as good as Victor Wanyama on the bench is an added luxury. The same is true of the defence that yet again kept a clean sheet, the fourth of the season. When the Saints supporters were bemoaning the loss of so many good players in the close season, I hope that they had some sympathy with Crystal Palace, who due to their dire financial position at the time were forced to sell both Jose Fonte and Nathaniel Clyne to them.

Both have now justified recent international calls, and along with Toby Alderweireld and Ryan Bertrand the defence has looked solid, and so the departure that I most feared of Luke Shaw and Dejan Lovren has not been a disaster.

With Florin Gardos and Maya Yoshida on the bench yet again the cover looks good, but I am uncertain about Fraser Forster the goalkeeper whose handling has not yet matched his £10 million fee, but after my recent gaffs I may well be wrong again.

So far so good but the real test will start in late November when they will be playing Chelsea, Manchester City, United and Arsenal, that's when we will know how good it is.

Today the minister of sport Helen Grant visited Pompey to find out for herself what motivates a community club, and more importantly what input the fans can make in the structure and management of a club.

This was an accolade for Portsmouth and showed the effort all the political parties are making to diffuse the present oligarchy system within the game.

All Saints fans will be asking, is to leave our benevolent owner and much admired Katherine Lisbarr alone as they think she is making a very good fist of things.

For a woman!

WINCHESTER CITY COUNCIL PUBLIC NOTICE

The Town and Country Planning (Local Planning) (England) Regulations 2012:
Preparation of a Local Plan (Regulation 18)

Public Consultation on the draft Winchester District Local Plan Part 2: Development Management and Site Allocations

Winchester City Council is consulting on the second part of its local plan following from the Core Strategy (Local Plan Part 1, 2013) for a period of 6 weeks from 24th October until 5th December 2014. The Local Plan Part 2 (LPP2) allocates sites for development in Winchester, the market towns and larger villages and sets out detailed 'development management' policies for the district outside of the South Downs National Park. There has been much work with Parish Councils, communities and other organisations to develop the draft Local Plan and this is the first time LPP2 has been consulted on in its entirety.

The Draft Local Plan, Sustainability Appraisal / Strategic Environmental Assessment (S/SEA), the Habitats Regulations Assessment (HRA) Screening Report and other supporting documents can be viewed:

- Online on the City Council's website:
www.winchester.gov.uk/development-policy/local-plan-part-2
- At Winchester City Council's City Offices, Colbrook Street, Winchester, SO23 8LJ Monday to Thursday 9.30am – 5.00pm and Friday 9.30am – 4.30pm.
- Copies of the Plan, S/SEA and HRA reports can also be viewed at libraries.

You can also visit exhibitions, where officers will be available to explain the Plan's proposals and answer questions on them, on the following dates:

- 6 Nov Waltham Chase Village Hall, Winchester Road, SO22 2LX; 3.30pm – 7.30pm
- 7 Nov Alford Community Centre, West Street, SO24 9AG; 3.00pm – 7.30pm
- 8 Nov Bishop Waltham Kings Church, High Street, SO22 1AA; 1.00pm – 4.00pm
- 10 Nov Kings Worthy Tubs Hall, Friar Road, SO23 7PQ; 2.30pm – 7.30pm
- 12 Nov Winchester Discovery Centre, Jewry Street, SO23 8BB; 3.00pm – 8.30pm
- 13 Nov Wickham Community Centre, Mill Lane, PO1 7SA; 3.30pm – 7.30pm
- 14 Nov Golden Common Community Centre, St Vigor Way, SO21 1UL; 2.00pm – 8.00pm
- 14 Nov Swernmore Village Hall, New Road, SO32 2FF; 3.30pm – 7.00pm
- 15 Nov Swernmore Village Hall, New Road, SO32 2FF; 1.00pm – 4.00pm
- 19 Nov Denmead Community Centre, School Lane, PO7 6LL; 8.00pm – 7.30pm

**WCC Officers not present

Your comment should be sent using the form provided on the website and submitted online or by email to LEO@winchester.gov.uk no later than 12 noon on 5th December 2014. Paper copies, for return to City Offices at the above address, are available at the places where the Plan can be inspected.

Please be aware that all comments we receive will be publicly available and will be included on our website.

Head of Strategic Planning, 24 October 2014

This Week's Public Notices from

All of the information below can be accessed from the website www.winchester.gov.uk/publicnotices



Winchester
City Council

WINCHESTER CITY COUNCIL TEMPORARY ROAD CLOSURE – VARIOUS ROADS - 14/15 NO. 19

NOTICE IS HEREBY GIVEN that Winchester City Council as agents for Hampshire County Council has made an Order on traffic management grounds to allow for routine maintenance works to be undertaken as follows:

ROADS TO BE CLOSED:

1. **Belmore Lane, Upham** – between its junction with Longwood and its junction with Salt Lane.
2. **Bishop Wood Road, Swernmore** – between its junction with the A32 Wickham Road and its junction with Goswell Hill.
3. **Botley Road, Bishop Waltham** – between its junction Bishop Lane and its junction with Colcot Lane.
4. **Clevers Hill, Waltham Chase** – between its junction with the B2177 Winchester Road and its junction with Clevers Lane.
5. **Cuddridge Lane, Waltham Chase** – between its junction with Clevers Hill and its junction with the B2035 Botley Road.
6. **Kiln Lane, Otterbourne** – between its junction with Main Road and its junction with Highbridge Road.
7. **School Lane/Brook Lane, Denmead** – between its junction with the B2150 Hambledon Road and its junction with Upkade Road.
8. **St Annes Lane, Shedfield** – between its junction with the A334 Botley Road and its junction with the B2177 Winchester Road.

ALTERNATIVE ROUTES:

1. **Belmore Lane, Upham** – Longwood, Longwood Dean, Salt Lane.
2. **Bishop Wood Road, Swernmore** – A32 Denford Road, A334 Farnham Road/Winchester Road, B2177 Winchester Road, High Street, Goswell Hill.
3. **Botley Road, Bishop Waltham** – B2035 Botley Road, A334 Wickham Road/Winkwood Hill/Botley Road, B2177 Winchester Road, B2035 Botley Road.
4. **Clevers Hill, Waltham Chase** – B2177 Winchester Road, Clevers Lane.
5. **Cuddridge Lane, Waltham Chase** – Cuddridge Lane, B2177 Winchester Road, B2035 Botley Road.
6. **Kiln Lane, Otterbourne** – Main Road, Otterbourne Road, Shawford Road, Finches Lane, High Street, Highbridge Road.
7. **School Lane/Brook Lane, Denmead** – Upkade Road, B2150 Hambledon Road.
8. **St Annes Lane, Shedfield** – A334 Botley Road, Church Road, B2177 Winchester Road.

Alternative routes will be signposted at the time of closure. Individual road closures in the same area will be implemented consecutively and/or simultaneously.

PERIOD OF CLOSURE:

From 29th October 2014 for a period of 12 months or until completion of the works.

Each road is only expected to be closed for the minimum period to facilitate the works.

Exact durations will be notified on site.

With the exception of any emergency works, advance warning signs will be displayed approximately 2 weeks in advance of any road closure being enforced.

Reasonable facilities will be provided for access to adjacent premises while the work is being carried out.

If you have any queries regarding the above please contact Hampshire Highways East, Tel: 0945 803 5633 on behalf of the Director of Environment (responsible for highways) OR for queries regarding the legal order please contact the Traffic and Transport section at Winchester City Council on 01962 849222.

Dated this 22nd day of October 2014

H.Bone, Head of Legal Services
Winchester City Council, City Offices, Colbrook Street,
Winchester, SO23 8LL

WINCHESTER CITY COUNCIL TEMPORARY ROAD CLOSURE A272 SPITFIRE LINK, WINCHESTER

NOTICE IS HEREBY GIVEN that Winchester City Council as agents for Hampshire County Council has made an Order on traffic management grounds to allow for highway works to be carried out as follows:

ROADS TO BE CLOSED: A272 SPITFIRE LINK, WINCHESTER between its junction with the A31 Petersfield Road and its junction with the M3 junction 9 roundabout.

ALTERNATIVE ROUTES:

Northbound: A31 St Catherine's Way, Bar End Road, Cheil Street, Bridge Street, Eastgate Street, Friargate, St Georges Street, Jewry Street, North Walk, Wiles Street, Easton Lane.

Southbound: Easton Lane, Wiles Street, Eastgate Street, Bridge Street, Cheil Street, Bar End Road, A31 St Catherine's Way.

ORDERS TO BE SUSPENDED: None.

PERIOD OF RESTRICTION:

From and including the 27th October 2014 for a period of twelve months or until completion of the works whichever is sooner. (Notwithstanding the above it is expected that the closure will be required for no longer than 4 nights)

Reasonable facilities will be provided to allow access to adjacent premises while the work is being carried out.

If you have any queries regarding the above please contact Hampshire County Council Highways East, Tel: 0945 803 5633 OR for queries regarding the legal order please contact the Traffic and Transport section at Winchester City Council on 01962 849222.

Dated this 22nd day of October 2014

H.Bone, Head of Legal Services
Winchester City Council, City Offices, Colbrook Street,
Winchester, SO23 8LL

WINCHESTER CITY COUNCIL TEMPORARY ROAD CLOSURE BELMORE ROAD, BISHOPS WALTHAM

NOTICE IS HEREBY GIVEN that Winchester City Council as agents for Hampshire County Council has made an Order on traffic management grounds to allow for oil pipeline works and highway works to be carried out as follows:

ROADS TO BE CLOSED: BELMORE ROAD, BISHOPS WALTHAM between its junction with Beches Hill and its junction with Stakes Lane.

ALTERNATIVE ROUTES: Beches Hill, The Hangers, Corhampton Lane, Stakes Lane and vice versa.

ORDERS TO BE SUSPENDED: None.

PERIOD OF RESTRICTION:

From and including the 25th October 2014 for a period of six months or until completion of the works whichever is sooner. (Notwithstanding the above it is expected that the closure will be required for no longer than 2 weeks)

Reasonable facilities will be provided to allow access to adjacent premises while the work is being carried out.

If you have any queries regarding the above please contact Hampshire County Council Highways East, Tel: 0945 803 5633 OR for queries regarding the legal order please contact the Traffic and Transport section at Winchester City Council on 01962 849222.

Dated this 22nd day of October 2014

H.Bone, Head of Legal Services
Winchester City Council, City Offices, Colbrook Street,
Winchester, SO23 8LL

WINCHESTER CITY COUNCIL TEMPORARY ROAD CLOSURE FORD LANE, OWNGTON

NOTICE IS HEREBY GIVEN that Winchester City Council as agents for Hampshire County Council has made an Order on traffic management grounds to allow for bridge and highway works to be carried out as follows:

ROADS TO BE CLOSED: FORD LANE, OWNGTON between its junction with the B3047 Ladycroft and its junction with East Lane.

ALTERNATIVE ROUTES:

B3047 Ladycroft, B3047 Ainsford Road, East Lane and vice versa.

ORDERS TO BE SUSPENDED: None.

PERIOD OF RESTRICTION:

From and including the 22nd October 2014 for a period of twelve months or until completion of the works whichever is sooner. (Notwithstanding the above it is expected that the closure will be required for no longer than 1 day)

Reasonable facilities will be provided to allow access to adjacent premises while the work is being carried out.

If you have any queries regarding the above please contact Hampshire County Council Highways East, Tel: 0945 803 5633 OR for queries regarding the legal order please contact the Traffic and Transport section at Winchester City Council on 01962 849222.

Dated this 22nd day of October 2014

H.Bone, Head of Legal Services
Winchester City Council, City Offices, Colbrook Street,
Winchester, SO23 8LL

WINCHESTER CITY COUNCIL TEMPORARY ROAD CLOSURE KNOWLE AVENUE, KNOWLE

NOTICE IS HEREBY GIVEN that Winchester City Council as agents for Hampshire County Council has made an Order on traffic management grounds to allow for a major construction and highway works to be carried out as follows:

ROADS TO BE CLOSED: KNOWLE AVENUE, KNOWLE between its western junction with Boundary Walk and a point 90 metres east of that junction (27 to 47 Knowle Avenue).

ALTERNATIVE ROUTES:

Knowle Avenue and vice versa.

ORDERS TO BE SUSPENDED: None.

PERIOD OF RESTRICTION:

From and including the 27th October 2014 for a period of six months or until completion of the works whichever is sooner. (Notwithstanding the above it is expected that the closure will be required for no longer than 3 days)

Reasonable facilities will be provided to allow access to adjacent premises while the work is being carried out.

If you have any queries regarding the above please contact Hampshire County Council Highways East, Tel: 0945 803 5633 OR for queries regarding the legal order please contact the Traffic and Transport section at Winchester City Council on 01962 849222.

Dated this 22nd day of October 2014

H.Bone, Head of Legal Services
Winchester City Council, City Offices, Colbrook Street,
Winchester, SO23 8LL

Appendix 2: Example Letter to Consultation Persons and Bodies



Winchester
City Council

**Strategic
Planning**

City Offices
Colebrook Street
Winchester
Hampshire
SO23 9LJ

tel 01962 840 222

fax 01962 841 365

telephone calls may be recorded

website www.winchester.gov.uk

Your Ref:

Our Ref: SO/eb

Enq to: Steve Opacic

Direct Line: 01962 848101

Email: LDF@winchester.gov.uk

23 October 2014

Dear Sir/Madam

**Public Consultation on the draft Winchester District Local Plan Part 2: Development
Management and Site Allocations**
**Notification under the Town and Country Planning (Local Planning) (England)
Regulations 2012**

Since the beginning of 2013 Winchester City Council has been working with Parish Councils, communities and other organisations to develop the draft Local Plan Part 2 - Development Management and Site Allocations. The Local Plan Part 2 (LPP2) follows the development strategy set out in [Local Plan Part 1 – Joint Core Strategy \(2013\)](#), and includes development management policies that update and will replace (once the LPP2 is adopted) the remaining "saved" policies from the Winchester District Local Plan Review (2006).

The LPP2 also allocates sites for development in Winchester, and at the market towns and larger villages of Bishop's Waltham, Colden Common, Kings Worthy, New Alresford, Swanmore, Waltham Chase and Wickham to meet the requirements set in the Core Strategy. Housing allocations for Denmead are set out in the Denmead Neighbourhood Plan but development management policies in the LPP2 will apply at Denmead. Most development within the South Hampshire Urban Area is already catered for through strategic allocations in the Core Strategy at West of Waterlooville and North Whiteley; however the LPP2 reviews and carries forward a couple of outstanding allocations at Whiteley from the Local Plan review.

Where boundaries are defined for the application of particular policies, such as settlement gaps, town centres and primary shopping frontages, these have been reviewed to ensure that they are up-to-date and allow for the development needs and allocations in the plan. Boundaries are shown on the Policies Map which accompanies the Plan.

Local Plan Part 2 covers the part of the District that lies outside the South Downs National Park. The National Park Authority has commenced preparation of its own local plan with a view to adoption by 2017.

The Plan, together with the Sustainability Appraisal / Strategic Environmental Assessment (SA/SEA) and the Habitats Regulations Assessment (HRA), is available for comment for a



Steve Opacic Head of Strategic Planning



printed on recycled paper

period of 6 weeks from 24th October until 5th December 2014. These and other supporting documents can be viewed:

- Online on the City Council's website – www.winchester.gov.uk/planning-policy/local-plan-part-2
- At Winchester City Council's City Offices, Colebrook Street, Winchester, SO23 9LJ Monday to Thursday 8.30am - 5.00pm and Friday 8.30am - 4.30pm.
- Copies of the Plan can also be viewed at libraries.

You can also visit exhibitions, where officers will be available to explain the Plan's proposals and answer questions on them, on the following dates:

Date	Venue	Time
6 Nov	Waltham Chase Village Hall, Winchester Road, SO32 2LX	3.30 – 7.30 pm
7 Nov	Alresford Community Centre, West Street, SO24 9AG	3.00 – 7.30 pm
8 Nov	Bishops Waltham Kings Church, High Street, SO32 1AA	10.00 am - 4.00 pm
10 Nov	Kings Worthy Tubbs Hall, Fraser Road, SO23 7PJ	2.30 to 7.30 pm
12 Nov	Winchester Discovery Centre, Jewry Street, SO23 8SB	3.00 – 8.30 pm
13 Nov	Wickham Community Centre, Mill Lane, PO17 5AL	3.30 – 7.30 pm
14 Nov	Colden Common Community Centre, St Vigor Way, SO21 1UU	2.00 – 8.00pm
14 Nov	Swanmore Village Hall, New Road, SO32 2PF	3.30 – 7.00 pm**
15 Nov	Swanmore Village Hall, New Road, SO32 2PF	10.00 am – 4.00 pm
19 Nov	Denmead Community Centre, School Lane, PO7 6LU	6.00 – 7.30 pm

** WCC Officers not present

Your comments should be sent using the form provided on the website and submitted online or by email to LPP2@winchester.gov.uk no later than 12 noon on 5th December 2014. Paper copies, for return to City Offices at the above address, are available at the places where the Plan can be inspected.

Please be aware that all comments we receive will be publicly available and will be included on our website.

Yours Faithfully,



Steve Opacic
Head of Strategic Planning

Appendix 3: Persons and organisations notified by email and letter

A2 Dominion Housing	Chilbolton Parish Council
Adams Hendry	Chilcomb Parish Meeting
Adjutant General Corps	City of Winchester Trust
Age UK	Civil Aviation Authority
Albion Water	Clanfield Parish Council
Alresford and District Partnership	Clarke Willmott LLP
Alresford Chamber of Commerce	Colden Common Parish Council
Alresford Society	Community Action Hampshire
Ampfield Parish Council	Compton and Shawford Parish Council
Annington Developments Ltd	Corhampton and Meonstoke Parish Council
Army Training Regiment	CPRE
Atisreal UK	CPRE Hampshire
Avington Associates	Crawley Parish Council
BAA Southampton	Curbridge Preservation Society
Badger Farm and Olivers Battery Residents Assoc	Curdrige Parish Council
Badger Farm Parish Council	Denmead Parish Council
Banner Homes	Denmead Village Association
Bargate Homes	DevPlan
Barton Stacey Parish Council	Dreweatt Neate
Barton Willmore LLP	Drivers Jonas Deloitte
Basingstoke & Deane Borough Council	Droxford Parish Council
Beauworth Parish Meeting	DTZ
Bighton Parish Council	Durley Parish Council
Bishops Sutton Parish Council	E.on Energy
Bishops Waltham Parish Council	Eagle Star Estates Ltd
Bishops Waltham Residents Association	East Hampshire District Council
Bishops Waltham Society	East Meon Parish Council
Bishopstoke Parish Council	Eastleigh Borough Council
Blue Cedar Homes Limited	ECA-P
Boarhunt Parish Council	EDF Energy Networks
Botley Parish Council	Edgars Limited
Boyer Planning	English Heritage
Braishfield Parish Council	English Welsh and Scottish Railway Ltd
Bramdean and Hinton Ampner Parish Council	Entec UK Ltd
Brimble Lea and Partners	Enterprise M3
British Telecommunications Plc	Environment Agency
Broadway Malyan	Equality and Human Rights Commission
Bryan Jezeph Consultancy	Exton Parish Meeting
Bullington Parish Council	Fair Oak and Horton Heath Parish Council
CALA Homes	Fareham Borough Council
Candovers Parish Council	First Wessex
Carter Jonas LLP	Firstplan
Centrica Plc	Forestry Commission
CgMs Consulting	Froxfield Parish Council
Chasemount Homes	Funtley Village Society
Cheriton Parish Council	

G L Hearn	Mono Consultants Ltd
German Fisher Chartered Surveyors	National Federation of Gypsy Liaison
Grainger Plc	Groups
Guinness	NATS
GVA Grimley Ltd	Natural England
Hambledon Parish Council	Neame Sutton Limited
Hampshire & IOW Local Nature	Network Rail
Partnership	New Alresford Town Council
Hampshire and Isle of White Wildlife	NHS England (Wessex)
Trust	NHS South East Hampshire CCG
Hampshire Chamber of Commerce	NHS West Hampshire CCG
Hampshire Constabulary	Northington Parish Council
Hampshire County Council	Npower
Hampshire Fire and Rescue	Office of the Rail Regulator
Hampshire Police Liaison	Old Alresford Parish Council
Hampshire Probation Trust	Olivers Battery Limited
Havant Borough Council	Olivers Battery Parish Council
Headbourne Worthy Parish Council	Otterbourne Parish Council
Health and Safety Executive	Overton Parish Council
Heine Planning	Owslebury Parish Council
Highways Agency	Partnership for Urban South
Homes and Communities Agency	Hampshire
Hordean Parish Council	Peter Brett Associates LLP
Humberts Leisure	Peter Symonds College
Hursley Parish Council	Police and Crime Commissioner
Hurstbourne Priors Parish Council	Popham Parish Council
Hyde Housing Association	Portico Property Ltd
Ian Baseley Associates	Portsmouth City Council
Itchen Stoke and Ovington Parish	Portsmouth Diocesan Board of
Council	Finance
Itchen Valley Parish Council	Portsmouth Water Company
Kilmeston Parish Council	Prime Planning & Development Ltd
Kilmeston Village Hall Management	Pro Vision Planning & Design
Committee	Radian Group
King Sturge	Railtrack Plc - Southern Zone
Kings Somborne Parish Council	Rapleys
Kingsworthy Parish Council	Residents of East Stratton
Knight Frank LLP	Residents of Forest Close, Waltham
Langtons Court Residents Group	Chase
Laverstoke Parish Council	Robert Tutton Town Planning
Leckford and Longstock Parish Council	Consultants Ltd
Little Somborne Parish Council	Ropley Parish Council
Littleton and Harestock Parish Council	Royal Winchester Golf Club
Lone Star Land Ltd	RPS Planning and Development
Luken Beck Ltd	RSPB
M25 Group	RTA Ltd
Malcolm Scott Consultants	Save Barton Farm Group
Marine Management Organisation	Savills
Medstead Parish Council	Search South
Metropolis	Sentinel Housing Association
Micheldever Parish Council	

Shawford Village Residents Association	The National Trust - London & South East Region
Shedfield Parish Council	The Nursery Road Residents Group
Shedfield Parish Residents' Group	The Planning Inspectorate
Sleepers Hill Association	The Theatres Trust
Soberton Parish Council	The Upper Itchen Valley Society
Solent Local Enterprise Partnership	Tichborne Estate
Solent Planning	Tichborne Parish Council
South Central Ambulance Service	Transco
NHS Trust	Turley Associates
South Downs National Park Authority	Twyford Parish Council
South Downs Society	Twyford Residents Association
South East Water	University of Winchester
South West Defence Estates	Upham Parish Council
South West Trains	Vail Williams LLP
South Wonston Parish Council	Waltham Chase Women's Institute
Southern Electric Plc	Warnford Parish Meeting
Southern Gas Networks	West Meon Parish Council
Southern Planning Practice	West Tisted Parish Meeting
Southern Water	Whitchurch Parish Council
Southwick and Widley Parish Council	Whiteley Town Council
Sovereign Kingfisher	Wickham Parish Council
Sparsholt Parish Council	Wickham Society
Sport England (South East Region)	Wield Parish Council
SSA Planning	WinACC
St Giles Hill Residents Association	Winchester Action On Climate Change
St Swithun Street & Symonds Street Resident's Assoc	Winchester and District Mencap Society
Stanmore and District Community Centre	Winchester Area Community Action
Steventon Parish Council	Winchester Business Improvement District
Sun Hill Junior School	Winchester Chambers
Swanmore Parish Council	Winchester City Residents Association
Teg Down Residents Association	Winchester Fit for the Future Campaign
Terence O'Rourke	Winchester Friends of the Earth
Test Valley Borough Council	Winchester Meadows Conservation Alliance
Thames Water	Wonston Parish Council
The Alresford Surgery	Woolf Bond Planning
The Coal Authority	WYG Planning & Design
The Dever Society	
The Lawn Tennis Association	

And 628 private individuals who had asked to be kept informed.

Appendix 4: Local Plan eNewsletter – September 2014



Local Plan eNewsletter

September 2014 - Issue 35

Draft Winchester Local Plan Part 2 - Development Management and Site Allocations

The Local Plan Part 2 – Development Management and Site Allocations (LPP2) will form part of the 'Development Plan' and will allocate sites as necessary for development and provide more detailed development management policies. Work started on LPP2 in December 2012, and throughout 2013, Council officers have worked with Parish Councils, communities and other organisations to determine the specific development needs of the larger settlements, including the requirements of Local Plan Part 1 (LPP1). The focus was on those settlements that have a housing target to be met under LPP1 policies for Winchester, the market towns and the larger villages (WT1 and MTRA2). Proposed site allocations have been agreed with the relevant Town/Parish Councils, except Denmead which is producing its own Neighbourhood Plan. Evidence studies and consultations have also been undertaken to identify the land use requirements for Winchester Town. The various consultations and evidence studies have formed part of the on-going 'front loading' and the results, along with on-going studies on site availability, the land use requirements for Winchester Town and the drafting of development management policies, have helped to inform the preparation of the LPP2.

The next stage is for the LPP2 to be considered by the Council's Cabinet on the 22nd September, and a special Council meeting on the 2nd October. The aim is for the Plan to be published for the start of a full round of consultation, which it is anticipated will run from 24th October until 5th December 2014. A further Local Plan eNewsletter will be produced when the consultation is about to start and a range of background documents and evidence studies will be available along with the Local Plan. These can be viewed on the [LPP2 pages on the Council website](#) which also features various studies and reports specific to Winchester Town, the market towns and larger villages.

Denmead Parish Council has prepared its own Denmead Neighbourhood Plan that will be subject to a separate process of preparation and consultation. A consultation draft of the Neighbourhood Plan was published in March 2014 and a revised Plan has recently been submitted to the City Council. The Denmead Neighbourhood Plan will be published for a 6-week consultation period starting in advance of the consultations on the LPP2. Further information is available on the [Denmead Neighbourhood Forum website](#).

The current timetable for the LPP2 is shown below (this updates the Council's published Local Development Scheme). The Plan will carry increased weight in planning decisions as key stages are reached and will become part of the Development Plan when it is adopted, replacing the 'saved' policies of the 2006 Local Plan.

Stage	Revised Date
Draft Plan for Consultation	October 2014
'Publication' (Pre-Submission Plan)	June 2015
Submission to Secretary of State	November 2015
Examination hearings	February - March 2016
Inspector's report	June 2016
Adoption	July 2016

Appendix 5: Press Release - 10th October 2014

Winchester Local Plan Part 2 – consultation on draft

Press Release: 10/10/2014

Public consultation on Winchester's Local Plan Part 2 will start on Friday 24 October and run for six weeks ending on Friday 5 December 2014.

The Local Plan Part 2 – Development Management and Site Allocations (LPP2) allocates sites for development and sets out detailed 'development management' policies.

Along with the Core Strategy (Local Plan Part 1, 2013) it will provide the range of site allocations and planning policies needed to guide development over the next 15-20 years.

There has been much work with Parish Councils, communities and other organisations to develop the draft Local Plan and this is the first time LPP2 has been consulted on in its entirety.

A series of exhibitions will be held with officers available to explain the Plan's proposals and answer questions. These are in the larger towns and villages, where the main site allocations are proposed, on the following dates:

- 6 Nov - Waltham Chase Village Hall, Winchester Road, SO32 2LX 3.30pm–7.30pm
- 7 Nov - Alresford Community Centre, West Street, SO24 9AG 3pm–7.30pm
- 8 Nov - Bishop's Waltham Kings Church, High Street, SO32 1AA 10am–2pm
- 10 Nov - Kings Worthy Tubbs Hall, Fraser Road, SO23 7PJ 2.30pm–7.30pm
- 12 Nov - Winchester Discovery Centre, Jewry Street, SO23 8SB 3pm–8.30pm
- 13 Nov - Wickham Community Centre, Mill Lane, PO17 5AL 3.30pm–7.30pm
- 14 Nov - Colden Common Comm Centre, St Vigor Way, SO21 1UU 2pm–8pm
- 14 Nov - Swanmore Village Hall, New Road, SO32 2PF 3.30pm–7pm (Winchester City Council officers not present)
- 15 Nov - Swanmore Village Hall, New Road, SO32 2PF 10am–4pm

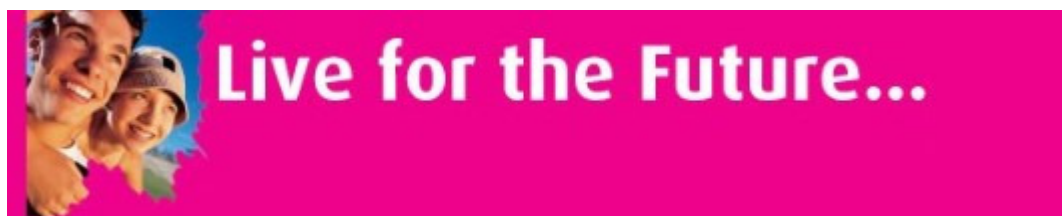
The exhibitions will cover:

- The status of the Local Plan and how Local Plan Part 2 fits with Part 1
- The adoption process for Local Plan Part 2 and the stages of consultation and examination
- How the draft Local Plan Part 2 and its proposals for the local area were developed
- What is proposed and how you can comment
- Next steps and future programme.

Most exhibitions are being held jointly with the relevant Parish/Town Council and at Kings Worthy and New Alresford the site promoters of the main proposed site will be present to discuss site options and development principles.

Appendix 6: Local Plan eNewsletter October 2014 & October Update editions

[Can't read this? View in a browser](#)



Local Development Framework Newsletter | October 2014 Issue 36

Winchester Local Plan Part 2 - Consultation on the Draft Plan

Public consultation on the Local Plan Part 2 – Development Management and Site Allocations (LPP2) will start on 24 October for a period of 6 weeks, closing on 5 December 2014. LPP2 allocates sites for development and sets out detailed 'development management' policies. Along with the Core Strategy (Local Plan Part 1, 2013) it will provide the range of site allocations and planning policies needed to guide development over the next 15-20 years. There has been much work with Parish Councils, communities and other organisations to develop the draft Local Plan and this is the first time LPP2 has been consulted on in its entirety.

A series of exhibitions has been arranged where officers will be available to explain the Plan's proposals and answer questions on them. These are in the larger towns and villages, where the main site allocations are proposed. Here are the dates:

Date	Venue	Time
6 Nov	Waltham Chase Village Hall, Winchester Road, SO32 2LX	3.30 - 7.30pm
7 Nov	Alresford Community Centre, West Street SO24 9AG	3 - 7.30pm
8 Nov	Bishops Waltham Kings Church, High Street, S32 1AA	10am - 2pm
10 Nov	Kings Worthy Tubbs Hall, Fraser Road, SO23 7PJ	2.30 - 7.30pm
12 Nov	Winchester Discovery Centre, Jewry Street, SO23 8SB	3 - 8pm
13 Nov	Wickham Community Centre, Mill Lane, PO17 5AL	3.30 - 7.30pm
14 Nov	Colden Common Comm Centre, St Vigor Way, SO21 1UU	2pm - 8pm
14 Nov	Swanmore Village Hall, New Road, SO32 2PF	3.30 - 7pm **
15 Nov	Swanmore Village Hall, New Road, SO32 2PF	10am - 4pm

**** WCC Officers not present on that day**

If you cannot attend the event for your local area please feel free to come along to one of the others and officers will be able to discuss the proposals for your area. The exhibitions will cover various matters, including:

- The status of the Local Plan and how Local Plan Part 2 fits with Part 1
- The adoption process for Local Plan Part 2 and the stages of consultation and examination
- How the draft Local Plan Part 2 and its proposals for the local area were developed
- What is proposed and how you can comment
- Next steps and future programme.

Most exhibitions are being held jointly with the relevant Parish/Town Council and, at Kings Worthy and New Alresford, the site promoters of the main proposed site will be present to discuss site options and development principles.

When the draft Plan is published on 24th October there will be an online comment form available or you can comment by email or letter to:

Head of Strategic Planning
Winchester City Council
City Offices
Colebrook Street
Winchester
SO23 9LJ

lpp2@winchester.gov.uk

Comments should be made **between the publication date of the Plan (24 October) and the closing date of 5 December (by 12.00 midday)**. Please only make comments after the publication date (24 Oct) and try to take the opportunity to visit one of the exhibitions to discuss the Plan's proposals. Many evidence studies and reports have been produced in developing the Plan. Those which are specific to Winchester Town, the market towns and larger villages can be viewed on the '[Development Needs and site Allocations](#)' page of the web site (click the box for the town/village you are interested in) and more general reports can be viewed on the '[LPP2 Draft Plan and Background Documents](#)' page (where the online comment form will also be found).



Local Development Framework Newsletter | October Update 2014 Issue 37

Winchester Local Plan Part 2 - Consultation starts TODAY!

Public consultation on the Local Plan Part 2 – Development Management and Site Allocations (LPP2) started today (24 October) for a period of 6 weeks, closing on 5 December 2014. LPP2 allocates sites for development and sets out detailed 'development management' policies. Along with the Core Strategy (Local Plan Part 1, 2013) it will provide the range of site allocations and planning policies needed to guide development over the next 15-20 years. There has been much work with Parish Councils, communities and other organisations to develop the draft Local Plan and this is the first time LPP2 has been consulted on in its entirety.

A series of exhibitions have been arranged where officers will be available to explain the Plan's proposals and answer questions on them. These are in the larger towns and villages, where the main site allocations are proposed, on the following dates (some of these have been extended/added since the last e-newsletter):

Date	Venue	Time
6 Nov	Waltham Chase Village Hall, Winchester Road, SO32 2LX	3.30 - 7.30pm
7 Nov	Alresford Community Centre, West Street SO24 9AG	3 - 7.30pm
8 Nov	Bishops Waltham Kings Church, High Street, S32 1AA	10am - 4pm
10 Nov	Kings Worthy Tubbs Hall, Fraser Road, SO23 7PJ	2.30 - 7.30pm
12 Nov	Winchester Discovery Centre, Jewry Street, SO23 8SB	3 - 8.30pm
13 Nov	Wickham Community Centre, Mill Lane, PO17 5AL	3.30 - 7.30pm
14 Nov	Colden Common Comm Centre, St Vigor Way, SO21 1UU	2pm - 8pm

Winchester District Local Plan Part 2 – Regulation 18 Consultation Statement (Part 2)

14 Nov	Swanmore Village Hall, New Road, SO32 2PF	3.30 -7pm **
15 Nov	Swanmore Village Hall, New Road, SO32 2PF	10am - 4pm
19 Nov	Denmead Community Centre, School Road, PO7 6LU	6 - 7.30pm

**** WCC Officers not present on that particular day**

The exhibitions are open to all so, if you cannot attend the event for your local area, please feel free to come along to one of the others and officers will be able to discuss the proposals for your area. The exhibitions will cover various matters, including:

- The status of the Local Plan and how Local Plan Part 2 fits with Part 1
- The adoption process for Local Plan Part 2 and the stages of consultation and examination
- How the draft Local Plan Part 2 and its proposals for the local area were developed
- What is proposed and how you can comment
- Next steps and future programme.

Most exhibitions are being held jointly with the relevant Parish/Town Council and, at Kings Worthy and New Alresford, the site promoters of the main proposed site will be present to discuss site options and development principles.

An online comment form is available at: www.winchester.gov.uk/planning-policy/local-plan-part-2 or you can comment by email to lpp2@winchester.gov.uk or by letter to:

Head of Strategic Planning
Winchester City Council
City Offices
Colebrook Street
Winchester
SO23 9LJ

Comments should be made **by the closing date of 5 December (12pm midday)**. Please take the opportunity to visit one of the exhibitions to discuss the Plan's proposals. Many evidence studies and reports have been produced in developing the Plan. Those which are specific to Winchester Town, the market towns and larger villages can be viewed on the '[Development Needs and site Allocations](#)' page of the web site (click the box for the town/village you are interested in) and more general reports can be viewed on the '[LPP2 Draft Plan and Background Documents](#)' page (where the online comment form will also be found).

Appendix 7: Advertisement in Mid Hampshire Observer dated 29/10/14

PAGE 4 29 / 10 / 2014

www.hantsdirect.com

Tel: 01962 859559

Free Oral Cancer screening sessions

Throughout November at St Cuthbert's Dental Surgery, Winchester



We are opening our doors to everyone throughout November to raise awareness of mouth cancer by offering free oral cancer screening sessions as part of Mouth Cancer Action Month.

This is a national campaign to encourage people to be more 'mouth aware', by paying attention to what is going on in their mouth and promotes the message 'if in doubt get it checked out'.

The campaign is encouraging people to wear blue lips as a visible sign of support for mouth cancer and for people to take 'blue lip selfies' and post the photos on social media. Successful treatment of mouth cancer is highly dependent on early detection, and can strike in several places including the lips, tongue, gums and cheek,

so it is vitally important to know what to look out for:-

- Ulcers which do not heal in three weeks
- Red and white patches in the mouth
- Unusual lumps or swellings in the mouth or head and neck area

Do not ignore any of these symptoms, tell your dentist or doctor immediately, because if caught early enough, the chances of surviving mouth cancer are pretty good. Your dentist will screen for these symptoms at every check-up, but if you haven't visited your dentist for more than a year, maybe this will be the reminder you need.

The whole team at St Cuthbert's Dental Surgery are delighted to be supporting Mouth Cancer Action Month this November and we want to ensure people that the screening is

painless and very quick.

We particularly want to see people coming in for the screening who maybe haven't visited a dentist for a while, maybe because they are too busy, or maybe a little anxious about visiting somewhere different. Our team ethos is to put the patients first and our motto is 'we care', so we hope we can use the free screenings to show people we are actually really very friendly.

Mouth Cancer Action Month is an important campaign, in the UK more than 6,700 people were diagnosed with mouth cancer last year. The disease has grown by a third in the last decade and remains one of very few cancers which are predicted to increase further in the coming years, so that is why we all should be 'mouth aware' and get regular check-ups with our dentists.

For more information about the campaign visit www.mouthcancer.org. To arrange your free screening in November please contact our friendly receptionists. Call 01962 853135 or email info@stcuthbertsdentalsurgery.co.uk. Follow us on Twitter @StCuthbertsDent. Use the hashtag #bluelipsellie. Like us on Facebook StCuthbertsDentalSurgery

Surrounds from £499

- Gas Fires
- Electric Fires
- Wood burning Stoves
- Full Installation Service
- Marble and Limestone Fireplaces



Southampton 02380 783031
Winchester 01962 877735
New Forest 02380 840257
Salisbury 01722 580122



Have your say on the Local Plan for Winchester

A public consultation on the Local Plan will start on 24th October for 6 weeks, closing on 5th December 2014. The draft Plan allocates sites for development and sets out planning policies for the future, following work with Ward representatives, the local community and organisations.

An exhibition has been arranged where City Council officers and Winchester City Councillors will be available to explain the Plan's proposals and answer questions on them.

During the consultation there are also a series of exhibitions you can visit in other locations, where officers will be available to explain the Plan's proposals and answer questions on them. These are as follows:

Find out about:

- The status of the Local Plan;
- The adoption process and the stages of consultation;
- How the draft Local Plan and its proposals were developed;
- What is proposed and how you can comment;
- Next steps and future programme.

PUBLIC EXHIBITION
Wednesday 12th
November 2014
3.00 – 8.30pm
Winchester Discovery
Centre, Jewry Street

a Touch of Class professional dry cleaners

For the very best in quality and service

A Touch of Class Professional Dry Cleaners

- Express Cleaning (2-4 hours)
- 24hr Cleaning: Curtains, Duvets, Quilts & Cushion Covers
- Specialists with Wedding Dresses, Ballgowns & Fine Silk
 - Carpet Cleaner Machine For Hire
- Suede and Leather Cleaned & Repaired
 - 3 Day Repairs & Alterations
 - Shoe Repairs – 24 hour
 - Shirt and Laundry Service
- Collection & Delivery Service on Large & Bulk Items

Andover Road, WINCHESTER 01962 864380
103 Winchester Road, CHANDLERS FORD 02380 270330
Next door to Helen Whitehouse Hairdressing

Mon - Fri 8.30am - 5.30pm Saturday 8.30 - 5.00pm
Collection & Delivery service on Large & Bulk Items

Date	Venue	Time
6 Nov	Waltham Chase Village Hall, Winchester Road, SO32 2LX	3.30 – 7.30 pm
7 Nov	Alresford Community Centre, West Street, SO24 9AG	3.00 to 7.30 pm
8 Nov	Bishops Waltham Kings Church, High Street, SO32 1AA	10.00 am - 4.00pm
10 Nov	Kings Worthy Tabbs Hall, Fraser Road, SO23 7PJ	2.30 - 7.30 pm
12 Nov	Winchester Discovery Centre, Jewry Street, SO23 8SB	3.00 – 8.30 pm
13 Nov	Wickham Community Centre, Mill Lane, PO17 5AL	3.30 – 7.30 pm
14 Nov	Colden Common Community Centre, St Vigor Way, SO21 1UU	2.00 – 8.00 pm
14 Nov	Swanmore Village Hall, New Road, SO32 2PF	3.30 – 7.00 pm**
15 Nov	Swanmore Village Hall, New Road, SO32 2PF	10.00 am to 4.00 pm
19 Nov	Denmead Community Centre, School Lane, PO7 6LU	6.00 – 7.30 pm

**WCC Officers not present

You can find out more about the Local Plan Part 2 and a comment form on our website

www.winchester.gov.uk/planning-policy/local-plan-part-2. Comment forms are also available from the City Offices, Colebrook Street, Winchester, SO23 9LJ, the exhibitions and local libraries and should be submitted either online or by email to LPP2@winchester.gov.uk no later than 12 noon on 5th December 2014.

Please be aware that all comments we receive will be publicly available and will be included on our website.



Winchester
City Council

Appendix 8: Parish Connect e-Newsletter November 2014



November 2014

Winchester Local Plan Part 2 - Consultation & Exhibition dates

Public consultation on the Local Plan Part 2 – Development Management and Site Allocations (LPP2) started today (24 October) for a period of 6 weeks, closing on 5 December 2014. LPP2 allocates sites for development and sets out detailed 'development management' policies. Along with the Core Strategy (Local Plan Part 1, 2013) it will provide the range of site allocations and planning policies needed to guide development over the next 15-20 years. There has been much work with Parish Councils, communities and other organisations to develop the draft Local Plan and this is the first time LPP2 has been consulted on in its entirety.

A series of exhibitions have been arranged where officers will be available to explain the Plan's proposals and answer questions on them. These are in the larger towns and villages, where the main site allocations are proposed, on the following dates (some of these have been extended/added since the last e-newsletter):

Date	Venue	Time
6 Nov	Waltham Chase Village Hall, Winchester Road, SO32 2LX	3.30 - 7.30pm
7 Nov	Alresford Community Centre, West Street SO24 9AG	3 - 7.30pm
8 Nov	Bishops Waltham Kings Church, High Street, S32 1AA	10am - 4pm
10 Nov	Kings Worthy Tubbs Hall, Fraser Road, SO23 7PJ	2.30 - 7.30pm
12 Nov	Winchester Discovery Centre, Jewry Street, SO23 8SB	3 - 8.30pm
13 Nov	Wickham Community Centre, Mill Lane, PO17 5AL	3.30 - 7.30pm
14 Nov	Colden Common Comm Centre, St Vigor Way, SO21 1UU	2pm - 8pm
14 Nov	Swanmore Village Hall, New Road, SO32 2PF	3.30 - 7pm **
15 Nov	Swanmore Village Hall, New Road, SO32 2PF	10am - 4pm
19 Nov	Denmead Community Centre, School Road, PO7 6LU	6 - 7.30pm

** WCC Officers not present on that particular day

The exhibitions are open to all so, if you cannot attend the event for your local area, please feel free to come along to one of the others and officers will be able to discuss the proposals for your area. The exhibitions will cover various matters, including:

- The status of the Local Plan and how Local Plan Part 2 fits with Part 1
- The adoption process for Local Plan Part 2 and the stages of consultation and examination
- How the draft Local Plan Part 2 and its proposals for the local area were developed
- What is proposed and how you can comment
- Next steps and future programme.

Most exhibitions are being held jointly with the relevant Parish/Town Council and, at Kings Worthy and New Alresford, the site promoters of the main proposed site will be present to discuss site options and development principles.

An online comment form is available at: www.winchester.gov.uk/planning-policy/local-plan-part-2 or you can comment by email to lpp2@winchester.gov.uk or by letter to:

Head of Strategic Planning
Winchester City Council
City Offices
Colebrook Street
Winchester
SO23 9LJ

Comments should be made **5 December (12pm midday)**. Please take the opportunity to visit one of the exhibitions to discuss the Plan's proposals. Many evidence studies and reports have been produced in developing the Plan. Those which are specific to Winchester Town, the market towns and larger villages can be viewed on the '[Development Needs and site Allocations](#)' page of the web site (click the box for the town/village you are interested in) and more general reports can be viewed on the '[LPP2 Draft Plan and Background Documents](#)' page (where the online comment form will also be found).

Appendix 9: Examples of Publicity Material around the Settlements

Bishop's Waltham:

Poster on Parish Council Notice Boards



**Winchester District
Local Plan Part 2
Public Exhibition**

**Saturday 8th November
10am to 4pm
in the King's Church, High Street**

It will include the Bishop's Waltham Development Plan

Additional housing and development policies for each site
Retention and enhancement of amenity features
Traffic management and junction improvements
The new and improved services and facilities
Scope for new employment opportunities
New pedestrian links and cycle routes



**Have
your say**

**Produced by the residents of Bishop's Waltham
for the residents of Bishop's Waltham**



Bishop's Waltham: Newsletter delivered to households

Bishop's Waltham Development Plan

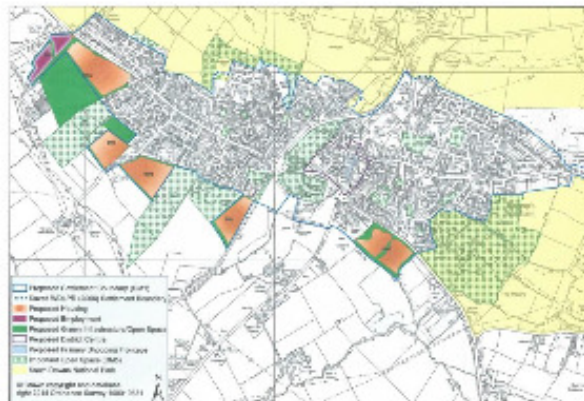
Following extensive community consultation the Parish Council approved the Bishop's Waltham Development Plan earlier this year. It has been incorporated into the Winchester City Council Local Plan Part 2 which is now due for public consultation.

The Plan includes:

- Proposed sites for the additional housing and the development policies for each site
- The new and improved services and facilities required
- Scope for new employment opportunities
- Retention and enhancement of amenity features
- Requirements for traffic management and junction improvements
- Provision of new pedestrian links and cycle routes

The context of the Plan in 2011 was that we need 500 new homes over the next 20 years for mainly Bishop's Waltham people. This is due largely to old people living longer, a continuing reduction in the number of people per household and the requirement for more housing for younger residents. Today we need to plan for 378 homes on green field sites.

The Bishop's Waltham Plan was drawn up by residents with a lot of public participation. Whilst some people may be concerned about new developments near their present homes, it is important to look at the Plan as a whole. The overall vision is to maintain the social ambience and vitality of Bishop's Waltham as medieval market town by avoiding any large new development sites.



There will be a public exhibition of the Local Plan Part 2 on:

**Saturday 8th November 2014
at 10am to 4pm
in the King's Church in the High Street**

Members of Winchester City Council and the Parish Council will be present to answer questions.

Comments on the Plan may be submitted on-line or by paper form. Full details will be available at the public exhibition. The Plan and comments form are also available on:

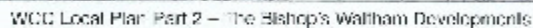
www.winchester.gov.uk/planning-policy/local-plan-part-2/lpp2-draft-plan/

The Public Consultation period ends on 5th December 2014.

*"A Development Plan by the residents of Bishop's Waltham . . .
. . . . for the residents of Bishop's Waltham"*

Support our Development Plan!

Robert Shields



News about Bishop's Waltham Footpaths

Ruth Shields



Colden Common: Leaflet delivered to Households



Colden Common Parish Council

Your Village, Your Views

Your chance to participate

Extraordinary Parish Council Meeting FRIDAY, 24TH OCTOBER @ 7.30pm

Colden Common Community Centre

Presentation from the Colden Common Youth Centre Charity about the plans to build a new youth building in Colden Common to accommodate a breakfast club, pre-school, after school club and facility for evening youth clubs and groups.

Opportunity to participate in discussion and debate.

Winchester City Council, Local Plan Exhibition FRIDAY, 14TH NOVEMBER 2pm TO 8pm

Colden Common Community Centre

Public consultation on the Local Plan Part 2 – Development Management and Site Allocations will start on 24 October for a period of 8 weeks, closing on 5 December 2014. City Council officers will be available to explain the Plan's proposals and answer questions on them.

The exhibitions will cover various matters, including:

- The status of the Local Plan
- The adoption process and the stages of consultation and examination
- How the draft Local Plan and its proposals for the local area were developed
- **What is proposed and how you can comment**
- Next steps and future programme

For further information see www.coldencommon.hants.gov.uk

or call the Parish Office on 01962 713700

Kings Worthy: Poster on Parish Council Notice Boards



Have Your say on the

Winchester District* Local Plan Part 2

Public Consultation 24 October – 5 December 2014

Find out about what is proposed and how you can comment

Exhibitions coming to a venue near you:

Date	Exhibition Venue	Time
6 Nov	Waltham Chase Village Hall Winchester Road SO32 2LX	3.30pm – 7.30pm
7 Nov	Alresford Community Centre West Street SO24 9AG	3.00pm – 7.30pm
8 Nov	Bishops Waltham Kings Church West Street SO32 1AA	10.00am – 4.00pm
10 Nov	Kingsworthy Tubbs Hall Fraser Road SO23 7PJ	2.30pm – 7.30pm
12 Nov	Winchester Discovery Centre Jewry Street SO23 8SB	3.00pm – 8.30pm
13 Nov	Wickham Community Centre Mill Lane PO17 5AL	3.30pm – 7.30pm
14 Nov	Colden Common Community Centre St Vigor Way SO21 1UU	2.00pm – 8.00pm
14 Nov	Swanmore Village Hall New Road SO32 2PF	3.30pm – 7.00pm**
15 Nov	Swanmore Village Hall New Road SO32 2PF	10.00am – 4.00pm
19 Nov	Denmead Community Centre School Lane PO7 6LU	6.00pm – 7.30pm

**WCC Officers not present

*excluding the South Downs National Park

Winchester

City Council

Kings Worthy: Leaflet delivered to households

Have your say on the Local Plan for the Worthies

New Development in Kings Worthy and Headbourne Worthy

A public consultation on the Winchester City Local Plan will start on 24th October for 6 weeks, closing on 5th December 2014. The draft Plan allocates sites for development and sets out policies for the future, following work with the Parish Councils, local community and organisations.

An exhibition has been arranged on 10th November from 3.00pm. to 7.00pm. at Tubbs Hall, Kings Worthy, where City Council officers and the Parish Councillors will be available to explain the Plan's proposals and answer questions on them. The promoters of the main proposed site allocation off Lovedon Lane will be present to discuss site options and development principles.

PUBLIC EXHIBITION

Monday 10 November 2014, 3.00 – 7.00pm

Tubbs Hall

Fraser Road, Kings Worthy, SO23 7PJ

The exhibition will cover various matters, including:

- The status of the Local Plan;
- The adoption process and the stages of consultation;
- How the draft Local Plan and its proposals were developed;
- What is proposed and how you can comment;
- Next steps and future programme.

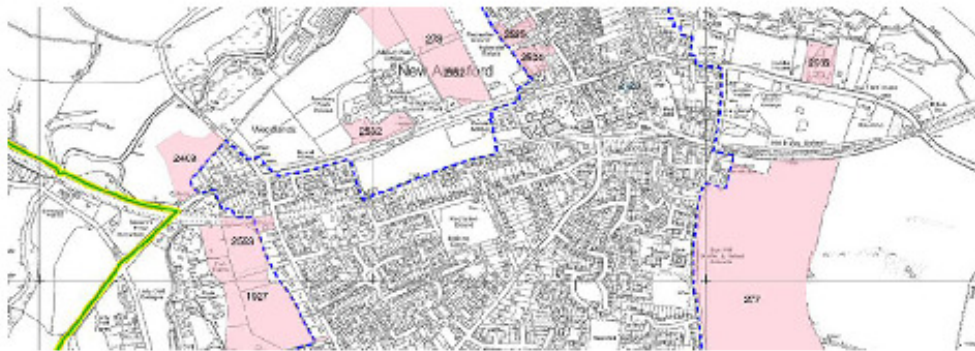


Winchester
City Council

New Alresford:

Article in Alresford and Itchen Valley Forum – November 2014 – Issue 96

FORUM | NEWS & VIEWS



WINCHESTER LOCAL PLAN PART 2

CONSULTATION ON THE DRAFT PLAN

Public consultation on the Local Plan Part 2 – Development Management and Site Allocations (LPP2) started on 24th October for a period of 6 weeks, closing on 5th December 2014. LPP2 allocates sites for development and sets out detailed 'development management' policies. Along with the Core Strategy (Local Plan Part 1, 2013) it will provide site allocations and planning policies to guide development in Alresford over the next 15-20 years.

There has been much work with the Town Council, local community and organisations to develop the draft Local Plan, but the location of new development remains a very controversial issue. This is the first time LPP2 has been consulted on in its entirety and it includes a series of policies for Alresford and requirements for the proposed site allocations.

An exhibition has been arranged where City Council officers and Alresford Town Councillors will be available to explain the Plan's proposals and answer questions on them:

Date: 7 Nov - Venue: Alresford Community Centre,
West Street, SO24 9AG Time: 3 - 7.30pm

THE EXHIBITION WILL COVER VARIOUS MATTERS, INCLUDING:

- The status of the Local Plan and how Local Plan Part 2 fits with Part 1;
- The adoption process for Local Plan Part 2 and the stages of consultation and examination;
- How the draft Local Plan Part 2 and its proposals for the local area were developed;
- What is proposed and how you can comment;
- Next steps and future programme.

The promoters of the main proposed site allocation east of Sun Lane will be present to discuss site options and development principles. Exhibitions are also planned in the other larger towns and villages and anyone that cannot get to the Alresford event is welcome to attend one of these:

DATE	LOCATION	TIME
6 Nov	Waltham Chase Village Hall, Winchester Road, SO32 2LX	3.30 - 7.30pm
8 Nov	Bishops Waltham Kings Church, High Street, SO32 1AA	10.00 - 2.00pm
10 Nov	Kings Worthy Tabbs Hall, Fraser Road, SO23 7PJ	2.30 - 7.30pm
12 Nov	Winchester Discovery Centre, Jewry Street, SO23 8SB	3.00 - 8.30pm
13 Nov	Wickham Community Centre, Mill Lane, PO17 5AL	3.30 - 7.30pm
14 Nov	Colden Common Comm Centre, St Vigor Way, SO21 1UU	2.00 - 8.00pm
14 Nov	Swanmore Village Hall, New Road, SO32 2PF	3.30 - 7.00pm**
15 Nov	Swanmore Village Hall, New Road, SO32 2PF	10.00 - 4.00pm

**WCC Officers not present

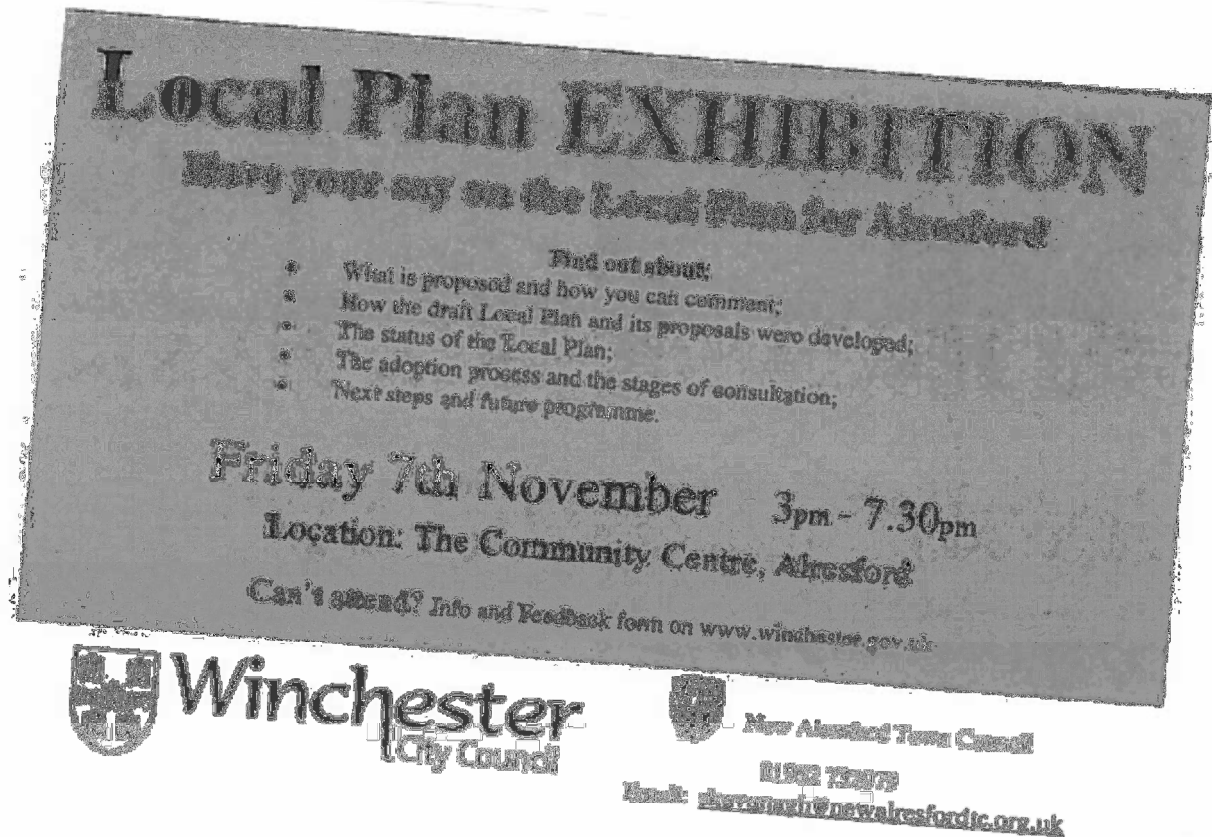
Now the draft Plan is published there is an online comment form available or you can comment by email or letter to:

Head of Strategic Planning, Winchester City Council
City Offices, Colebrook Street, Winchester, SO23 9LJ
lpp2@winchester.gov.uk

Comments should be made between the publication date of the Plan (24th October) and the closing date of 5th December (by 12.00 midday). Please try to take the opportunity to visit one of the exhibitions to discuss the Plan's proposals. Many evidence studies and reports have been produced in developing the Plan. Those which are specific to Alresford can be viewed on the 'Development Needs and site Allocations' page of the web site (click the box for Alresford) and more general reports can be viewed on the 'LPP2 Draft Plan and Background Documents' page (where the online comment form will also be found).

New Alresford:

Leaflet delivered to all Alresford households



New Alresford:

Banner displayed at West Street, Alresford by pedestrian crossing



Swanmore:

Banner displayed outside Swanmore C of E Primary School, Church Road, opposite village centre shops



Swanmore:

Another banner displayed outside Swanmore C of E Primary School, Church Road, opposite village centre shops



Waltham Chase:

Extract from Parish Magazine for Shedfield, Shirrell Heath and Waltham Chase, November 2014

Winchester Local Plan Part 2 – Consultation on the Draft Plan

Public consultation on the Local Plan Part 2 – Development Management and Site Allocations (LPP2) will start on 24th October for a period of 6 weeks, closing on 5th December 2014.

The adopted Core Strategy (Local Plan Part 1) sets out the housing requirement for Waltham Chase, which is for 250 new houses between 2011 to 2031. The LPP2 will therefore need to allocate the sites for development and set out detailed 'development management' policies. There has been much work with Parish Councils, communities and other organisations to develop the draft Local Plan but this is the first time the full Plan will have been consulted on.

A series of exhibitions have been arranged where officers will be available to explain the Plan's proposals and answer questions on them. These are in the larger towns and villages, where the main site allocations are proposed, on the following dates will be in our local area:

Date	Venue	Time
6 Nov	Waltham Chase Village Hall	3.30–7.30pm
8 Nov	Bishops Waltham Kings Church	10.00–2.00pm
12 Nov	Winchester Discovery Centre	3.00– 8.30pm
13 Nov	Wickham Houghton Room, Community Centre	3.30–7.30 pm
14 Nov	Swanmore, Village Hall	3.30– 7.00pm

15 Nov Swanmore, Village Hall 10.00-4.00pm

If you cannot attend the event for Waltham Chase please feel free to come along to one of the others and officers will be able to discuss the proposals for your area. The exhibitions will cover various matters, including:

- The status of the Local Plan and how Local Plan Part 2 fits with Part 1;
- The Local Plan adoption process and the stages of consultation and examination;
- How the draft Local Plan and its proposals for the local area were developed;
- What is proposed and how you can comment on it;
- Next steps and future programme.

When the draft Plan is published on 24th October there will be an online comment form available or you can comment by email lpp2@winchester.gov.uk or letter to: Head of Strategic Planning, Winchester City Council, City Offices, Colebrook Street, Winchester SO23 9LJ

Comments should be made between the publication date of the Plan (24th October) and the closing date of 5th December (by 12.00 midday).

Wickham: A5 Leaflet delivered to households

Have your say on the Local Plan for Wickham


A public consultation on the Local Plan will start on 24th October for 6 weeks, closing on 5th December 2014. The draft Plan allocates sites for development and sets out policies for the future, following work with the Neighbourhood Planning Steering Group (NPSG), Wickham Parish Council, and local community and organisations.

An exhibition has been arranged where City Council officers and Parish and City Councillors will be available to explain the Plan's proposals and answer questions on them. The adopted LPP1 allocates 260 houses to Wickham for the plan period up to 2031. 44 are built or have permission. LPP2 allocates the remaining 266 for Wickham and provides the policies and details to support these developments. So please take the time to attend our forthcoming event. We look forward to seeing you.

PUBLIC EXHIBITION
Thursday 13th November 2014, 3.30 – 7.30pm
Wickham Community Centre
Mill Lane, Wickham, PO17 5AL

Find out about:

- The status of the Local Plan;
- The adoption process and the stages of consultation;
- How the draft Local Plan and its proposals were developed;
- What is proposed and how you can comment;
- Next steps and future programmes.




During the consultation there are also a series of exhibitions you can visit in other locations, where officers will be available to explain the Plan's proposals and answer questions on them. These are as follows:

Date	Venue	Time
6 Nov	Wickham Green Village Hall, Winchester Road, SO22 2LX	5.30 – 7.30 pm
7 Nov	Alverstoke Community Centre, West Street, SO24 2AT	5.30 to 7.30 pm
7 Nov	Flittons Waltham Kings Church, High Street, SO22 1DA	10.00 am – 4.00 pm
10 Nov	Kings Worthy Village Hall, Fowler Road, SO23 7FL	7.00 – 7.30 pm
12 Nov	Winchester Discovery Centre, Jersey St, SO1 3EJ	9.00 – 6.00 pm
13 Nov	Wickham Community Centre, Mill Lane, PO17 5AL	3.30 – 7.30 pm
14 Nov	London Common Community Centre, St Vincent Way, SO21 1JL	2.00 – 8.00 pm
14 Nov	Swanmore Village Hall, New Road, SO22 2P*	3.30 – 7.00 pm*
15 Nov	Greenmore Village Hall, New Road, SO22 2P*	10.00 am to 4.30 pm
16 Nov	Leysdown Community Centre, Reform Lane, PO7 8LJ	8.00 – 7.30 pm

*WCC Officers not present

You can find out more about the Local Plan Part 2 and a comment form on our website www.winchester.gov.uk/planning-policy/local-plan-part-2. Comment forms are also available from the exhibitions and local libraries or at City Offices, Colbrook Street, Winchester, SO23 9LJ and should be submitted either online, by post to the above address, or by email to LPP2@winchester.gov.uk no later than 12 noon on 5th December 2014.

Please be aware that all comments we receive will be publicly available and will be included on our website.



Winchester: Poster advertising WinACC Meeting

Shaping our future

The Local Plan for Winchester District



The Local Plan will control housing and developments for years to come.

- What does it say?
- What do you want it to say?

Tuesday 11 November, 7.30 – 9.30pm

with Steve Opacic, Head of Strategic Planning, WCC

United Church, Jewry St, Winchester SO23 8RZ

Free, all welcome.

Refreshments at 7.15



Winchester Action on Climate Change Ltd. Registered charity no. 1150754

Winchester: A5 Leaflet delivered to households with Mid Hampshire Observer (Issue 714) 29/10/14

Have your say on the Local Plan for Winchester

A public consultation on the Local Plan will start on 24th October for 6 weeks, closing on 5th December 2014. The draft Plan allocates sites for development and sets out planning policies for the future, following work with Ward representatives, the local community and organisations.

An exhibition has been arranged where City Council officers and Winchester City Councillors will be available to explain the Plan's proposals and answer questions on them.

PUBLIC EXHIBITION
Wednesday 12th November 2014
3.00 – 8.30pm

Winchester Discovery Centre, Jewry Street

Find out about:

- The status of the Local Plan;
- The adoption process and the stages of consultation;
- How the draft Local Plan and its proposals were developed;
- What is proposed and how you can comment;
- Next steps and future programme.



During the consultation there are also a series of exhibitions you can visit in other locations, where officers will be available to explain the Plan's proposals and answer questions on them. These are as follows:

Date	Venue	Time
5 Nov	Wallham Chase Village Hall, Winchester Road, SO32 2LX	3.30 – 7.30 pm
7 Nov	Alresford Community Centre, West Street, SO24 9AG	3.00 to 7.30 pm
8 Nov	Bishops Waltham Kings Church, High Street, SO32 1AA	10.00 am – 4.00pm
10 Nov	Kings Worthy Tubbs Hall, Fraser Road, SO20 7PJ	2.00 – 7.30 pm
12 Nov	Winchester Discovery Centre, Jewry Street, SO24 8SH	3.00 – 8.30 pm
13 Nov	Wickham Community Centre, Mill Lane, PO17 5AL	3.30 – 7.30 pm
14 Nov	Colder Common Community Centre, St Vigor Way, SO21 1UU	2.00 – 8.00 pm
14 Nov	Swanmore Village Hall, New Road, SO32 2PF	3.30 – 7.00 pm**
15 Nov	Swanmore Village Hall, New Road, SO32 2PF	10.00 am to 4.00 pm
19 Nov	Denmead Community Centre, Goscoe Lane, PO7 6LU	6.00 – 7.30 pm

**WCC Officers not present

You can find out more about the Local Plan Part 2 and a comment form on our website www.winchester.gov.uk/planning-policy/local-plan-part-2. Comment forms are also available from the City Offices, Colebrook Street, Winchester, SO20 9LJ, the exhibitions and local libraries and should be submitted either online or by email to LPP2@winchester.gov.uk no later than 12 noon on 5th December 2014.

Please be aware that all comments we receive will be publicly available and will be included on our website.

