

# Appendix A08

Live for the Future Stakeholder Event  
22 March 2007

## Appendix A08: Live for the Future Stakeholder Event 22 March 2007

This event was held in Winchester Guildhall on 22nd March 2007, and followed a slightly different format to the community events due to the nature of the participants representing professional and technical organisations that will be informally and formally consulted throughout the LDF process. To assist council officers with facilitation, this event was lead by Enfusion the company employed by the City Council to undertake its sustainability appraisal/strategic environmental assessment, as they have experience in undertaking visioning type exercises with a range of audiences.

A total of 38 professionals from both within and outside the Council participated in the event (a list of participants is set out in Annex 1).

As per the community events the format used followed a workshop style, following a welcome by the Council's Chief Executive and then a presentation by the Head of Strategic Planning to explain the purpose of the event and the need to explore the potential spatial options available.

After signing in on arrival, participants were given 3 'post its' and requested to write down the three most important issues from their professional/technical perspective that they thought the City Council needed to deal with through its LDF. These were then placed on boards under the general themes of movement, economy, workplace and technology, society, education and living and environment. During a break participants were then requested to 'vote' for those issues that they thought were the most important, the results of this are set out in full at Annex 2.

Key issues for Sustainable development for the District were:

- Ensuring adequate facilities and services to support population growth;
- climate change/renewable energy/reducing car dependency;
- affordable housing;
- and retaining Winchester's heritage and landscaped setting.

Two further exercises were undertaken in smaller workshop groups of between 8-13 participants, lead by facilitators from the City Council or Enfusion.

Photo 1



### Stakeholder Event Exercise 1

Futuring & Drivers for Change – the aim of this exercise was to try and identify what are the drivers for change in the Winchester District area over the next 10-20 years, and how will they affect the different areas of the district in terms of the city, the market towns, and the rural areas. More explicitly what are these drivers going to be, for example climate change and energy, transport, etc. and what impact will these have on spatial planning in the Winchester district – what opportunities will there be, what should the council's priorities be. And finally what is the vision for the District over the next 10-20 years?

#### **When it came to imagining the future....**

People expressed concern with how Winchester will cope with additional growth without losing its environmental quality and distinctiveness.

They felt that people's aspirations will change because of climate change; that we may adopt less demanding lifestyles in the long term and travel less (although some participants were concerned that mobility and traffic/ congestion would increase). Home working will become a more popular option & on-line shopping and deliveries will increase.

There will be more of a role for local agriculture, with an increased demand for local produce, speciality produce and organic farming. We will look at the countryside and value it differently, as a multi-use environment (e.g. farming, green infrastructure, habitat...). Green infrastructure and the preservation of green wedges and networks will be important.

The full results of this are set out at Annex 3.

### Stakeholder Event Exercise 2

Four Potential Scenarios for Spatial Planning were explored and participants had the opportunity to contribute to each of the following:-

- A Concentration of Development within Defined Settlements
- B Dispersal of development
- C New Settlement
- D Release of Major Development Area

Under each scenario a series of matters were explored and key questions debated including - How & Where will we live? What kind of households? How & Where will we play? Study/learn? Shop? How will we relax? How and where will we access air and nature? How will we move – cars, trains, buses, walking, or bikes?

The purpose of this type of exercise was to get the participants to raise issues from their professional point of view as to matters that would need to be addressed through the LDF but also to raise awareness of the whole sustainable communities debate and to get interaction between participants as to a best case scenario taking into account the views of others.

The outcome of this exercise is set out in full at Annex 4 and is summarised below :-

Each of the options had a range of benefits and constraints, and there was however, no clear consensus on the best option.

**Option 1 (concentration within existing settlements)** may improve existing infrastructure, but concerns re: environmental quality/heritage and increased traffic/congestion in Winchester. Also concerns that growth in the southern settlements may benefit Portsmouth and Southampton, and not Winchester District (particularly in relation to affordable housing).

**Option 2 (dispersal by expanding existing settlements)** could improve facilities and services, however sites would be smaller, and may not help achieve the critical mass required to meet overall affordable housing needs and infrastructure requirements. However, it may have a positive impact on existing facilities through making them more viable. The option is likely to increase car travel.

**Option 3 (new settlements)** would better enable housing affordability (overall), but less likely to meet need in locations where it is required (e.g. Winchester, rural villages). This option has benefits in terms of creating a critical mass for transport infrastructure (e.g. rail), renewable energy and sustainable design. However there are less benefits for existing communities, and less incentives to develop brownfield land first.

**Option 4 (Major Development Areas)** has similar benefits to option 3, but on a larger scale. There are opportunities for new infrastructure and creating sustainable travel patterns (e.g. through Green Travel Plans). Impacts dependent on location, but some were concerned that if development was at Whiteley, then it may not benefit Winchester District. Concerns were expressed re: availability of water resources, and some felt this was a decision to be made at a regional planning level (i.e. should have been addressed in the RSS).

## **Appendix A08 - Annex 1: List of organisations invited and those who participated**

### **Invitations were sent to the following organisations:**

South East England Regional Assembly  
Hampshire County Council – planning, transport, education, estates  
Adjoining local planning authorities  
Environment agency  
Highways agency  
English heritage  
Natural England  
South east England development agency  
Gas companies  
Electric companies  
Telecommunication companies  
Network Rail  
Bus companies  
Water authorities  
Sewerage companies  
GOSE  
LSP board  
Hampshire Wildlife trust  
Friends of the Earth  
CPRE  
City of Winchester Trust  
South Downs Joint committee  
Gypsy council  
The Home builders federation  
Forestry commission  
University Winchester  
University Southampton  
Sparsholt College  
MOD (DE)  
WACA  
Community Action Hampshire  
Housing associations/RSL's  
Chamber of Commerce

Winchester City Council: Chief Executive, all directors and all heads of division

### **Participants**

#### **Organisation/Company:**

Adams Hendry  
Barton Cornwell  
Boyer Planning Ltd. (on behalf of Granger Trust)  
CALA Homes (South) Ltd  
City of Winchester Trust  
City of Winchester Trust  
CPRE Hants and District

Defence Estates  
English Heritage SE Region  
Environment Agency  
FDP Savilles  
Hampshire and IOW Wildlife Trust  
Hampshire County Council  
Hampshire County Council Estates  
Hampshire County Council Transport  
Hyde Housing Association  
Kingfisher Housing Association, Wessex Housing Partnership

LSP (A2 Winchester)  
LSP (FOE)  
LSP (WACA)  
Portsmouth City Council  
Portsmouth City Council (Planning Services)  
Terence O'Rourke  
WCC Assistant City Secretary (Legal)  
WCC Chief Estates Officer  
WCC Community Officer  
WCC Director of Communities  
WCC Director of Development  
WCC Enabling Officer - Housing  
WCC Environment Team Manager  
WCC Head of Access and Infrastructure  
WCC Head of Planning Control  
WCC Head of Policy  
WCC Housing Department  
WCC Landscape  
WCC Policy and Partnership Officer  
WCC Sites and Monuments Officer  
WCC Sports & Recreation Manager  
WCC Sustainability Officer

## **Appendix A08 - Annex 2: Stakeholder Event: Issues, Futuring and Drivers for Change**

*“Live for the Future... a Sustainable Winchester District”*

**WINCHESTER CITY COUNCIL LOCAL DEVELOPMENT FRAMEWORK:  
VISIONING  
STAKEHOLDER WORKSHOP 0930-1300 22 MARCH 2007  
King Alfred Hall, Winchester Guildhall**

## ISSUES FOR SUSTAINABLE DEVELOPMENT FOR THE WINCHESTER DISTRICT AND THE LOCAL DEVELOPMENT FRAMEWORK

Each participant was invited to state up to 3 key issues for sustainable development, spatial planning and the Winchester District; subsequently participants were invited to place stars against those issues that they thought to be most important.

<b>MOVEMENT</b>		
<b>Reducing Car Dependency</b> Development that reduces car dependency whilst retaining Winchester as a viable & attractive place to live and work	3	5*
<b>Sustainable Modes of Transport</b> including safe & regular public transport, footpaths & cycle links between settlements, and other green travel	4	3*
<b>Access to Services</b>	2	
<b>Plan &amp; Provide for those without access to a car</b>	2	
<b>ECONOMY, WORKPLACE &amp; TECHNOLOGY</b>		
<b>High Quality jobs in sustainable locations</b> including good access & close to quality homes, working closer to home & less commuting	3	3*
<b>Winchester as major focus of learning, education &amp; government</b>	1	1*
<b>Reducing commute in/out balance</b>	2	1*
<b>Balance between housing &amp; employment land delivery</b>	2	
<b>SOCIETY, EDUCATION &amp; LIVING</b>		
<b>Affordable Housing</b>	6	5*
<b>Adequate Facilities &amp; Services</b> , including for education, health, schools, shops, affordable leisure facilities; accessible for all ages & timely; new leisure centre, high quality sports environments, footpaths & cycle ways to encourage physical activity	13	9*
<b>Social inclusion</b> ; support for vulnerable & disadvantaged, responding to community consultation	4	3*
<b>Accommodating Housing Growth</b> , including positive benefits to communities	3	1*
<b>Enabling Green &amp; Healthy Choices</b>	1	3*
<b>Interactions of Health &amp; Learning with spatial planning</b>	1	1*
<b>Low/Zero Carbon homes</b> ; including zero carbon homes by 2016, micro-renewables in existing & new development	3	
<b>Sustainable Communities</b> , including historic environment & a sense of place and community; avoiding anti-social behaviour by design	3	
<b>ENVIRONMENT</b>		
<b>Climate Change</b> , including adaptation & mitigation; overarching policy; reduce carbon emissions	5	5*
<b>Renewable Energy/Energy Saving Design</b> , flexible approach, wind power, passive solar design	4	1*
<b>Retain Winchester's landscape setting</b> , prioritise previously developed land	5	4*
<b>Protect historic environment</b> , local distinctiveness in building style & materials, continue tradition of quality architecture, accommodate change whilst respecting & retaining historic assets	4	1*
<b>Green Infrastructure</b> , including retention of green space, place shaping, buffer zone	4	3*

<b>Biodiversity</b> , including National Parks & Natura 2000 sites	3	1*
<b>Water Resources &amp; Flood Risk</b>	2	
<b>Air Quality</b>	1	
<b>Total post-its</b>	<b>81</b>	
<b>Total Stars</b>		<b>50</b>



## Appendix A08 - Annex 3: FUTURING AND DRIVERS FOR CHANGE

The aim of this session was to have participants think beyond the issues and problems being faced today and imagine what the future may hold for Winchester. Participants discussed the drivers that may affect Winchester District in the next 10-20 years, and any changes foreseen. Responses are grouped by theme.

	<b>Cities</b>	<b>Market towns</b>	<b>Rural Areas</b>	<b>General</b>
<b>Society and education</b>	<ul style="list-style-type: none"> <li>▪ Accommodating Housing needs, particularly affordable housing.</li> <li>▪ Winchester is a small compact city; accommodating increased growth may not be sustainable.</li> <li>▪ Should assess impact of extended schools and education facilities.</li> <li>▪ A mix of people will live in Winchester, but limited scope to tackle housing affordability.</li> <li>▪ Does Winchester want 'own city' status, or continue as London suburb?</li> </ul>	<ul style="list-style-type: none"> <li>▪ People's aspirations may need to be reduced under climate change /low energy scenarios.</li> <li>▪ May need to adapt less demanding lifestyle in all areas.</li> <li>▪ LDF should force growth of market towns- they are big enough to be sustainable and successful.</li> </ul>	<ul style="list-style-type: none"> <li>▪ Need to define sustainability for rural areas.</li> <li>▪ Village schools are closing, but need to plan for future.</li> </ul>	<ul style="list-style-type: none"> <li>▪ Ageing population</li> <li>▪ Will economic growth continue?</li> <li>▪ Changing family structures, but will still need to provide larger homes to meet needs of families.</li> <li>▪ High housing costs continue to force people out of London.</li> </ul>
<b>Environment</b>	<ul style="list-style-type: none"> <li>▪ Urban/rural interface/fingers of green should be preserved/enhanced.</li> <li>▪ More allotments needed .</li> <li>▪ Low energy development.</li> <li>▪ Is car parking used to full potential? Could there be a better use for spaces?</li> <li>▪ Infill development is changing the character of communities.</li> </ul>	<ul style="list-style-type: none"> <li>▪ Over-development may occur- leading to a strain on infrastructure.</li> </ul>	<ul style="list-style-type: none"> <li>▪ There may be an increase in organic farming/ demand for local produce, therefore more important role for farming.</li> <li>▪ Increase in the idea of a multiple-use countryside, e.g. for recreation, farming, carbon sinks and habitats.</li> </ul>	<ul style="list-style-type: none"> <li>▪ There will be increasing pressure on water resources</li> <li>▪ There is too much of an emphasis on bricks and mortar. We need to think outside of the box.</li> <li>▪ People will adopt less demanding lifestyles.</li> <li>▪ Could the national park squeeze development into other areas?</li> </ul>
<b>Economy, workplace and technology</b>	<ul style="list-style-type: none"> <li>▪ Will Winchester City retain Government organisational presence?</li> <li>▪ City has distinct retail environment, suburbs also need</li> </ul>	<ul style="list-style-type: none"> <li>▪ New business centres to support home working.</li> </ul>	<ul style="list-style-type: none"> <li>▪ Flexibility in reuse of ex-agricultural buildings.</li> <li>▪ Pressure on agricultural industry to convert for employment use.</li> </ul>	<ul style="list-style-type: none"> <li>▪ Home working is growing, but there are limits- people still need some contact with colleagues.</li> <li>▪ There will be more pressure for development in the southern</li> </ul>

	<p>their own retail.</p> <ul style="list-style-type: none"> <li>Due to land prices, the City is being dominated by residential development.</li> </ul>			<p>part of the District.</p> <ul style="list-style-type: none"> <li>Growth of small specialist farming produce and farmers markets. Large scale agriculture under pressure.</li> </ul>
<b>Leisure, Culture and Sport</b>	<ul style="list-style-type: none"> <li>Winchester needs another accessible Country Park.</li> </ul>	<ul style="list-style-type: none"> <li>Fitness facilities required.</li> </ul>	<ul style="list-style-type: none"> <li>Community facilities are key providers of leisure, culture and sport facilities.</li> <li>Flexible space for hire with a range of activities.</li> </ul>	<ul style="list-style-type: none"> <li>Shopping on-line will increase, but high street shopping will still be a leisure pursuit.</li> <li>Home deliveries of shopping increase; shopping becomes primarily a leisure activity.</li> <li>People should still be able to walk into the countryside surrounding Winchester.</li> <li>Need to better promote facilities.</li> <li>School curriculum should encourage more activity.</li> </ul>
<b>Movement</b>	<ul style="list-style-type: none"> <li>Need to decrease congestion- more park and rides.</li> <li>Commuter patterns will change due to congestion costs.</li> <li>Congestion and parking may lead to a decline in city centre environment.</li> </ul>	<ul style="list-style-type: none"> <li>Need to reduce car usage/ increase working from home opportunities/ increase internet shopping.</li> <li>Further distances to travel to schools as school catchment boundaries become less strict.</li> </ul>	<ul style="list-style-type: none"> <li>Decreasing levels of bus services may affect vitality of market towns and villages</li> <li>Home working to increase.</li> </ul>	<ul style="list-style-type: none"> <li>Less car use will affect working patterns.</li> <li>Attitudes to school transport will change, more walking, less school run.</li> <li>People will travel less overseas (air travel expensive and environmentally unfriendly).</li> <li>There will be future capacity problems on trains.</li> <li>People will continue to use their cars and mobility will increase.</li> <li>Travel to schools will increase due to choice and children not remaining in catchment areas.</li> </ul>

## Appendix A08 – Annex 4: Stakeholder Event: Scenarios

*“Live for the Future... a Sustainable Winchester District”*

WINCHESTER CITY COUNCIL LOCAL DEVELOPMENT FRAMEWORK: VISIONING  
 STAKEHOLDER WORKSHOP 0930-1300 22 MARCH 2007  
 King Alfred Hall, Winchester Guildhall

### VISIONING FOR THE LDF FOR THE NEXT 10-20 YEARS POTENTIAL SCENARIOS FOR SPATIAL PLANNING

This session considered which development planning scenario might best address the drivers and issues and aspirations for Winchester District. Four options were considered, with the four groups moving around the room to ensure they considered each scenario.

**Scenario A: Concentration of Development within Larger Defined Settlements**

**Scenario B: Dispersal of Development within Existing Settlements**

**Scenario C: New Settlement at least 5000 dwellings**

**Scenario D: Release of Major Development Areas**

Following is a summary of responses.

	<b>Spatial Option 1: Concentration of developments within the larger defined settlements</b>	<b>Spatial Option 2: Dispersal of development in existing settlements- by expanding these settlements</b>	<b>Spatial Option 3: New Settlements</b>	<b>Spatial Option 4: Release of Major Development Areas</b>
<b>Housing</b>	<p><b>Benefits</b></p> <ul style="list-style-type: none"> <li>▪ Growth may allow Whiteley's infrastructure to be improved.</li> <li>▪ Need to work with neighbouring districts.</li> <li>▪ Growth at Winchester more easily accommodated than in smaller market towns.</li> </ul>	<p><b>Benefits</b></p> <ul style="list-style-type: none"> <li>▪ Opportunities to enhance centres.</li> <li>▪ Could add benefits for communities in decline.</li> <li>▪ Will help keep existing facilities if limited growth allowed e.g. schools.</li> <li>▪ Will allow a more focused</li> </ul>	<p><b>Benefits:</b></p> <ul style="list-style-type: none"> <li>▪ Some ex-defence sites may become available.</li> <li>▪ 40% affordable housing more achievable and better housing mix.</li> <li>▪ Better opportunities to plan for longer term housing need.</li> <li>▪ Micheldever Station is only</li> </ul>	<p><b>Benefits:</b></p> <ul style="list-style-type: none"> <li>▪ Allows for a high number of houses therefore will meet housing need.</li> <li>▪ Barton Farm is deliverable in terms of land ownership.</li> </ul> <p><b>Constraints:</b></p> <ul style="list-style-type: none"> <li>▪ Land ownership can constrain</li> </ul>

	<p><b>Constraints:</b></p> <ul style="list-style-type: none"> <li>Need to improve transport infrastructure.</li> <li>Growth in Whiteley &amp; Wickham may not help Districts affordable housing.</li> <li>Housing needs in Winchester will not be met by developments in the south.</li> <li>Most affordable housing needed in Winchester but market housing also required.</li> </ul>	<p>approach to meet the local needs of these settlements.</p> <ul style="list-style-type: none"> <li>Less opposition from local community.</li> <li>Allocation of Greenfield sites where these are of low quality e.g. biodiversity.</li> </ul> <p><b>Constraints:</b></p> <ul style="list-style-type: none"> <li>Some settlements do not have distinct centres.</li> <li>On small sites affordable housing is limited.</li> <li>Would need to identify potential infill sites and extensions with the local community.</li> <li>Good design is critical.</li> <li>Unsustainable concept.</li> <li>Need to look at relationship with market towns.</li> <li>Flood risk may be a problem for some settlements.</li> </ul>	<p>potential site (can build at existing rail node).</p> <p><b>Constraints:</b></p> <ul style="list-style-type: none"> <li>Will use Greenfield land.</li> <li>Housing needs survey shows demand is in the City not elsewhere.</li> <li>New settlement not required as main RSS housing growth not planned for Winchester.</li> <li>Easier to develop Greenfield sites so no incentive for developers to build on brownfield.</li> <li>The decision is bigger than the district (RSS).</li> <li>Less integration with existing communities.</li> <li>Micheldever may just benefit Basingstoke residents and increase commute to London.</li> </ul>	<p>delivery e.g. Whiteley.</p> <ul style="list-style-type: none"> <li>Public opposition .</li> <li>Proposals may benefit Portsmouth and Southampton more than Winchester (particularly affordable housing/housing need and economy).</li> <li>Issue re: military accommodation situation.</li> <li>May have negative impact on the sustainability of villages and towns.</li> <li>Allocating major development areas may limit flexibility in the short term.</li> </ul>
<b>Transport</b>	<p><b>Benefits:</b></p> <ul style="list-style-type: none"> <li>Opportunities for improvement at Whiteley.</li> <li>More housing in Winchester, extension of existing settlements, would help fund improvements.</li> </ul> <p><b>Constraints:</b></p> <ul style="list-style-type: none"> <li>Road infrastructure inadequate (especially east – west movements) and will limit bus service improvements.</li> <li>Additional traffic pressure in Winchester - need to restrict carts in City.</li> </ul>	<p><b>Benefits:</b></p> <ul style="list-style-type: none"> <li>Will benefit some settlements but not others.</li> <li>Don't need to build large new roads.</li> <li>Opportunities to provide better public transport services.</li> <li>Carbon emissions should be key issue.</li> </ul> <p><b>Constraints:</b></p> <ul style="list-style-type: none"> <li>Need to consider accessibility issues – large variations between settlements.</li> </ul>	<p><b>Benefits:</b></p> <ul style="list-style-type: none"> <li>Benefits of economy of scale e.g. transport and infrastructure and opportunities for new transport infrastructure.</li> </ul> <p><b>Constraints:</b></p> <ul style="list-style-type: none"> <li>Size of settlement important if too small may lead to more commuting e.g. 5,000 too small to support new rail station.</li> <li>Capacity of rail network.</li> </ul>	<p><b>Benefits:</b></p> <ul style="list-style-type: none"> <li>Opportunities for green travel plans and new public transport infrastructure.</li> </ul> <p><b>Constraints:</b></p> <ul style="list-style-type: none"> <li>Barton Farm could increase congestion in the city.</li> <li>Car travel will still be an issue.</li> </ul>

	<ul style="list-style-type: none"> <li>▪ Could reduce parking availability in Winchester to improve environment.</li> <li>▪ Difficult to manage infrastructure benefits compared to other scenarios.</li> </ul>	<ul style="list-style-type: none"> <li>▪ May increase need to travel by car-particularly in some settlements and where facilities are poor.</li> <li>▪ Must have holistic approach to transport.</li> <li>▪ Lack of access to facilities and services.</li> </ul>		
<b>Environment</b>	<p><b>Benefits:</b></p> <ul style="list-style-type: none"> <li>▪ May be environmental benefits if measures are built in.</li> <li>▪ Southern settlements are attractive – these could provide a better quality of life.</li> <li>▪ Southern settlements provide gateway to National park.</li> </ul> <p><b>Constraints:</b></p> <ul style="list-style-type: none"> <li>▪ Pressure on historic character of towns and countryside .</li> <li>▪ 30% housing need in other market towns, 50% in Winchester.</li> <li>▪ Green wedges important – must retain accessibility for residents.</li> <li>▪ Has Winchester met its environmental limits?</li> <li>▪ River Itchen very vulnerable – water extraction and International Designation.</li> <li>▪ Market towns already large enough, growth will involve a deliberate decision to change character .</li> </ul>	<p><b>Benefits:</b></p> <ul style="list-style-type: none"> <li>▪ Keeping settlements viable will help protect built environment .</li> </ul> <p><b>Constraints</b></p> <ul style="list-style-type: none"> <li>▪ Putting housing in unsustainable small villages will only cause greater problems.</li> </ul>	<p><b>Benefits:</b></p> <ul style="list-style-type: none"> <li>▪ Easy to plan renewable energy schemes in large new settlements e.g. combined heat and power.</li> <li>▪ Opportunities to “push the envelope” e.g. low carbon community .</li> </ul> <p><b>Constraints:</b></p> <ul style="list-style-type: none"> <li>▪ Negative landscape impact.</li> </ul>	<p><b>Benefits:</b></p> <ul style="list-style-type: none"> <li>▪ Opportunities for eco-homes.</li> </ul> <p><b>Constraints:</b></p> <ul style="list-style-type: none"> <li>▪ Is there sufficient water/waste water facilities to accommodate extra housing?</li> </ul>

<p><b>Facilities</b></p>	<p><b>Benefits:</b></p> <ul style="list-style-type: none"> <li>▪ Can build on Whiteley's existing facilities, growth may provide improvements in facilities but must be provided with housing.</li> <li>▪ Could help reverse trend to de-centralise facilities.</li> <li>▪ Growth could improve Winchesters Cultural facilities.</li> </ul> <p><b>Constraints:</b></p> <ul style="list-style-type: none"> <li>▪ Winchester may have reached housing saturation point.</li> <li>▪ Not enough centres of growth to be of wide benefit.</li> </ul>	<p><b>Benefits:</b></p> <ul style="list-style-type: none"> <li>▪ Will help to keep existing facilities.</li> </ul> <p><b>Constraints:</b></p> <ul style="list-style-type: none"> <li>▪ Small development cannot fund contributions needed to benefit communities.</li> </ul>	<p><b>Benefits:</b></p> <ul style="list-style-type: none"> <li>▪ If large enough can accommodate infrastructure in a timely manner.</li> </ul> <p><b>Constraints:</b></p> <ul style="list-style-type: none"> <li>▪ Cost of new infrastructure.</li> </ul>	<p><b>Benefits:</b></p> <ul style="list-style-type: none"> <li>▪ Larger schemes can inject significant funding to address specific problems.</li> <li>▪ Opportunities for better overall infrastructure.</li> </ul>
--------------------------	---	--	---	---



# Appendix A09

Young Persons Events April 2007



## Appendix A09 - Young Persons Events April 2007

- 1.1 The City Council recognised the importance of capturing the views of young people as part of its frontloading campaign; consequently a special event was planned in conjunction with Hampshire County Council, entitled Young People Living for the Future. To maximise the contributions of this special audience the event focussed on three workshops:-
  - Sustainable Communities
  - Winchester District Play Strategy (dealing with all aspects of what young people want to do in their free time up to and including 16 yrs old)
  - The Children and Young People's Plan for Winchester District
- 1.2 The event was held on 18th April at the University of Winchester's West Downs Campus. Over 40 children attended from Peter Symonds Sixth Form College, Perins High School Arlesford and The Westgate School, Kings School in Winchester. Students and staff attending were pleased to be able to contribute to some key projects, and the City Council issued a press release highlighting the success of the event which resulted in a number of items in the local media (see Annex 1)
- 1.3 In addition to this event targeted at 11- 16 year olds, officers were fortunate enough to be invited by Western Primary School in Browning Drive, Winchester to talk to their year 4 (8-9 year old) children who were about to study the pros and cons of a large development. This event followed an identical format to the high school event and raised some interesting findings about what children of this age group like and dislike. Both high school and primary aged children completed the same exercises, the methodologies and summary results are set out below.
- 1.4 In terms of the Live for the Future Campaign and exploring the concept of sustainable communities, the aim of involving young people was very much focussed on getting this audience to think longer term and primarily what would make them come back to live/work in the Winchester District when they grew up.
- 1.5 Following a short presentation by Council officers the students were set to work with 'post-its' and coloured dots. Student feedback from this event is set out at Annex 2, with many of the students found the event worthwhile attending and would wish to attend a similar event in the future.

### Young Persons Event Exercise 1

- 1.6 Each student was requested to first identify all the positive things they liked about where they lived and the environment they were familiar with – these were then placed on a board marked 'likes'. The students were then asked to think into the future and suggest things that would need to change to make their area a better more sustainable place – these contributions were placed on a board marked 'dislikes'. The full lists of these likes and dislikes are set out at Appendix 3 (Young Persons Event) and Appendix 4 (Primary School Event). However, there are a number of common themes being raised which are summarised below :-

<b>Common Likes</b>	<b>Common Dislikes</b>
Winchester is the right size	Buses too expensive
Places are friendly	Increase in anti-social behaviour
Can access facilities by bus or walking	Lack of more specialist facilities for young people
Being near to shops, sports facilities	Traffic – congestion and pollution
Being near to countryside and open space – lots of parks	
Feeling safe and knowing people locally	

### Young Persons Event Exercise 2

1.7 This exercise was entitled 'thinking about the future' and the students were given examples of some key matters to think about :-

- What sort of place/area would you like to live in?
- What type of house would you want to live in? Could you afford it?
- What do you think needs to change in the future?
- Do you want to work near to where you live?
- Will you have a car for all your journeys?
- What type of job/occupation will you have?
- Where will you go shopping or will all purchases be made using the internet?
- Where will you go for your social activities?
- What will your children do in their spare time? Where will they go to school?
- What do you think will be important to you in the future?
- Do you think you will wish to live in Winchester when you grow up?

1.8 A series of question boards were placed around the room, each with a set of options that the students had to vote for. The voting system used employed a 'traffic light' method whereby each student had a series of green, yellow and red dots and were requested to vote for the options according to the following code :-

**Green = MOST IMPORTANT**

**Yellow = QUITE IMPORTANT**

**Red = LEAST IMPORTANT**

- 1.9 In addition each question board had a suggestion box; these together with the full results of this exercise are set out at Appendix 17.
- 1.10 This exercise has revealed some interesting answers:-
- 1.11 Where you will work? – the most favoured options were - locations close to home that were accessible on foot or by bus, or in a town near to home but too far to walk to. Commuting out of the area was considered the least important.
- 1.12 Where you will live in the future? – being near to family was the most favoured option there was no conclusive answer in terms of general location expressed under the other options.
- 1.13 How you will live in the future? – this revealed some strong aspirations to be home owners either of a small or large property, there was some interest in living in a property that you could also work from. Renting a property and building your own home was the least favoured option.
- 1.14 How will you travel to get to places in the future? – walking and cycling were voted the most favourite followed by driving a car or using the bus/train.
- 1.15 What type of place do you want to live in? – the most favoured options were where there is little crime and anti social behaviour and where you feel safe in a friendly place. This audience did not consider the option 'where people have priority over cars and lorries' to be important.
- 1.16 What type of environment do you want to live in? – there was no strong most or least favourite option under this category.
- 1.17 How will you spend your free time? - being with friends and family was considered the most important followed by participating in sport or recreation.
- 1.18 What facilities do you think will be important to you in the future? – job opportunities followed by access to health facilities then facilities with learning opportunities were considered the most important. Banks and financial services were considered the least important.
- 1.19 How should we build in the future? – the two options under this category with the most almost equal votes were 'use land within the towns and villages before building on farm land' and 'build using renewable energy and recycled materials', these options were closely followed by 'replace existing buildings before building new ones'. The 'encourage traditional styles' option was considered the least important.

## Appendix A08 – Annex 1: Young Persons Event: Press Release

### Winchester City Council asks young people about their vision for the future

---



Students got to work with stickers, maps and 'Monopoly' money in some hands-on workshops about how they see the future of the Winchester district.

About forty 11- to 16-year-olds representing Peter Symonds College, Kings, Westgate and Perins schools were involved in the project which took place on Wednesday 18 April at the West Downs Campus of the University of Winchester.

The day was organised by Winchester City Council who worked with partners Hampshire Youth Service, Winchester District Children and Young People Partnership, the Forestry Commission and Play England to make it a real success.

The students spent the day discussing what it is like to live in the Winchester district, what sort of things they want to do in their spare time and what should be done to make sure young people in the district enjoy a good quality of life. They also talked about what we can do to make our communities sustainable for the future and what will make it better place now and when they are older.

Mike Simpson of Winchester YMCA who chairs the Winchester District Children and Young People's Partnership said: "Young people often get overlooked when plans are being developed which affect them. This event was an excellent opportunity for us to hear directly from them. The students gave us some great ideas and interesting views. We will use all of this information to help make the Winchester district a better place for young people."

During the day the students took part in three active workshops where they recorded their thoughts and opinions, and at lunchtime had the opportunity to use a *Big Brother*-style diary room to give their impressions of the day.

When considering the Children and Young People's Plan they acted as policy makers, producing ideas and then choosing how best to spend their 'Monopoly' money on the various projects.

For the Winchester District Play Strategy they worked with representatives from the City Council, Forestry Commission and Play England and discussed what their ideal area to spend leisure time would look like. This will help Winchester City Council lead the development of the very first Play Strategy for the district, and should enable the authority to apply for National Lottery funding.

Throughout the day the students also completed feedback forms that will feed into the data already collected through the City Council's Live for the Future campaign that will in turn form the core strategy for the Local Development Framework.

Commenting on the event, Fern Calver, Senior Youth Worker for Winchester District, said: "This has been an excellent opportunity to empower and consult young people about what's important to them now and what they're worried about for their future."

Rob Gazzard of the Forestry Commission added: "We're really enthusiastic about getting involved with the Council's play strategy. We own a lot of land in the district and it's really great to get input from children and teenagers as to how they think we could make better use of it."

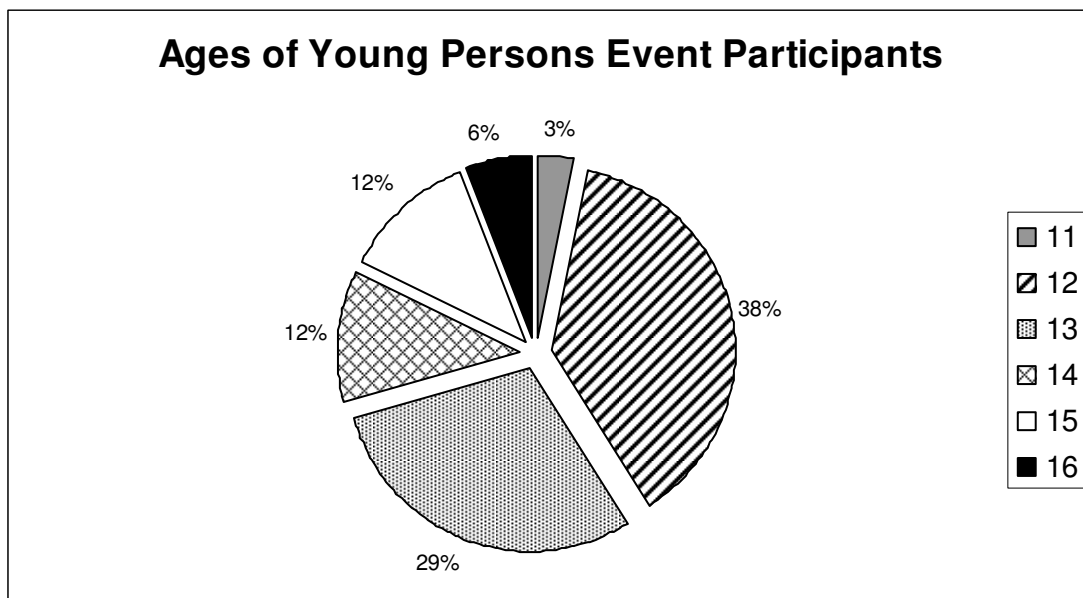
Date published: 02/05/2007

## Appendix A08 – Annex 2: Young Persons Event: Student Feedback

### Feedback from Young Persons Event April 18<sup>th</sup> 2007

A total of 35 students aged between 11 and 16 attended the event. The schools and colleges involved were Kings, Westgate and Peter Symonds from Winchester and Perins School from Alresford.

Figure 1 shows the ages of the participants.



At the end of the event, the students were asked to evaluate giving each of the three workshops. The results are set out below.

Figure 2

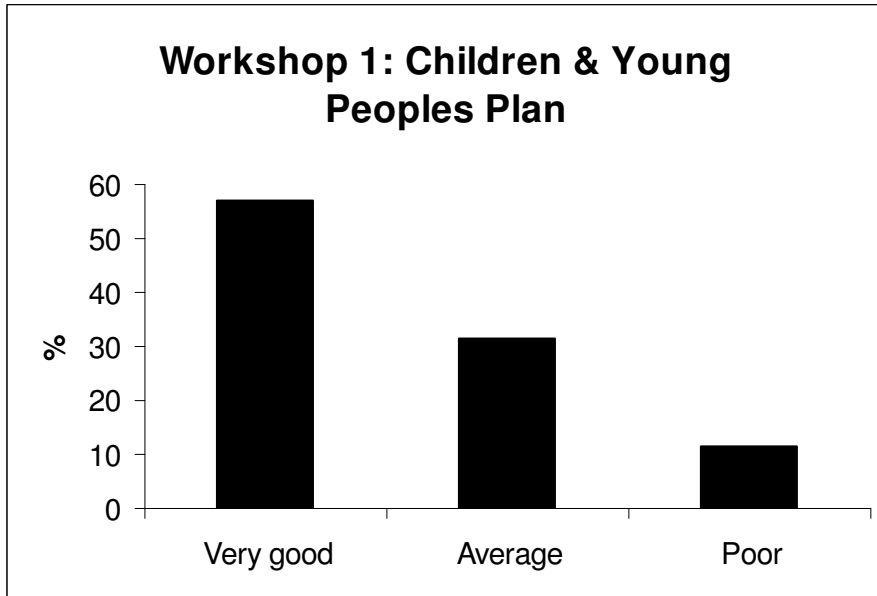
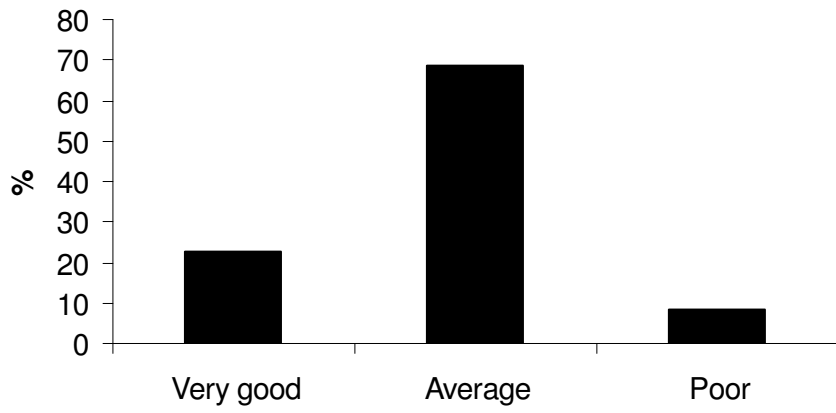


Figure 3



Figure 4

### Workshop 3: Sustainable Communities





# Appendix A08 – Annex 3: Young Persons Event: Exercise 1. Likes and Dislikes

## Young People Living for the Future – High School Event 18<sup>th</sup> April 2007

Exercise 1 – Likes and dislikes/what needs to change

Methodology : the students were given two sets of post-it notes to record a) what they liked about where they live now/go to school/spend their free time etc – the emphasis being on now and b) what they disliked or things that needed to change in the future – trying to think ahead of what would make their area a better place. The results are recorded below. Comments that raise similar issues/concerns have been grouped together.

Results :

Likes	Dislikes
<ul style="list-style-type: none"> <li>• Winchester has lots of facilities – shops, sports clubs (rugby, golf, cricket), swimming pool</li> <li>• Lovely area, safe with shops and close to friends houses – quiet with good facilities and close to Winchester</li> <li>• Winchester is the perfect size and not too busy</li> <li>• You can walk to all the important parts of Winchester from where I live.</li> <li>• Winchester has everything I need</li> <li>• I like being near to the shopping centre</li> <li>• Loads of good shops</li> <li>• I like being near to a park, country park, shopping centre – I love all the availability – I can walk from my house</li> <li>• I like being able to walk to places</li> </ul>	<ul style="list-style-type: none"> <li>• Not enough motivation in the town – needs more fun stuff</li> <li>• Need more entertainment facilities – cinemas, bowling alley, swimming pools, ice skating</li> <li>• Only things to do for large groups</li> <li>• Need facilities for older teenagers</li> <li>• More music events</li> <li>• Need proper established music venue for students</li> <li>• Need a Stage school</li> <li>• Old people</li> <li>• People have prejudice views – people in Winchester are well-off and ignorant of those who may not be.</li> <li>• Need to make it more friendly</li> <li>• Dislike large menacing crowds (teenagers) - smoking, shouting and swearing</li> <li>• Wary of the drug culture</li> <li>• Drugs are a real social problem in Winchester.</li> <li>• Anti-social behaviour</li> <li>• littering</li> <li>• Need cheaper bus services</li> <li>• Need wider service</li> <li>• Not enough buses</li> <li>• Bus is expensive</li> </ul>

<ul style="list-style-type: none"> <li>• I know all my neighbours</li> <li>• I like the fact that I have really good next door neighbours and most of my friends live quite near.</li> <li>• Lots of freedom</li> <li>• Not much crime</li> <li>• Loads of green</li> <li>• Peaceful – fields to play in</li> <li>• Environment is really nice – big parks and a stream</li> <li>• Village community is very friendly and welcoming and there's lots to do – picnics, events</li> <li>• I like the fact that there are lots of rural places and nice villages.</li> <li>• It's not busy</li> <li>• Transport is really good in Winchester</li> <li>• Lots of sports facilities</li> <li>• Zoo is nearby</li> <li>• Clean</li> <li>• Friendly</li> <li>• Lots of friends close by.</li> <li>• Lots of people and friends close by</li> <li>• Friendly atmosphere</li> <li>• Safe</li> <li>• I like feeling that you're safe in your community</li> <li>• I like being near my friends</li> </ul>	<ul style="list-style-type: none"> <li>• Needs to be easier to get to places</li> <li>• Need more public transport</li> <li>• More nightclubs</li> <li>• Lack of places for young people to gather</li> <li>• Not enough for young people to do</li> <li>• More facilities near to where I live</li> <li>• Need teenagers to stop hogging the parks</li> <li>• Need a clean swimming pool</li> <li>• Need more to do</li> <li>• Need more recreational grounds</li> <li>• More wildlife parks</li> <li>• Litter in the park</li> <li>• Stop vandalism and trouble</li> <li>• Needs to be less litter and vandalism</li> <li>• drunks</li> <li>• Things are very expensive</li> <li>• Need more choice in cinema – premiers</li> <li>• More houses for future families</li> <li>• Bigger houses</li> <li>• Houses need to cost less</li> <li>• Not enough houses</li> <li>• I dislike all the new houses being built as they ruin the countryside and it means more pollution.</li> <li>• Houses too expensive</li> <li>• Need to address issue of homelessness</li> <li>• Too many houses</li> <li>• More fields should be accessible</li> <li>• Too much traffic – one way system</li> <li>• Need to be more eco friendly</li> <li>• Village should not grow anymore – it</li> </ul>
---	---

<ul style="list-style-type: none"> <li>• I feel safe – not ‘gangs’</li>   <li>• I like the sense of community spirit</li> <li>• I like the history behind the city</li>   <li>• Not too big can walk everywhere</li>   <li>• Good shops and entertainment</li>   <li>• I like being near to the train station</li> <li>• Good transport</li> <li>• Easy access to train station</li> <li>• Take train to Southampton/London</li>   <li>• Easy access to train and bus station</li>   <li>• Easy access to Winchester</li> <li>• Good theatre in Winchester</li>   <li>• I like the shops, buses are reliable and I can see my friends</li>   <li>• Lots of buses</li> <li>• Cheap bus fares</li> <li>• Bus stop near by</li> <li>• Regular buses</li> <li>• Easy to get about – can catch a bus easily</li>   <li>• Nearly everywhere is walkable</li> <li>• Lots of parks</li> <li>• Lots of country walks</li> <li>• Go fishing off the bridge over the river – easy access to the river</li> <li>• I can walk everywhere</li>   <li>• Nice (evening) bike rides</li> <li>• Easy to bike to/from school</li> </ul>	<p>is big enough</p>
--	----------------------

- |  |  |
|--|--|
| <ul style="list-style-type: none"><li>• Good – easy to get to school</li><li>• Nice primary school like a big family</li><br/><li>• Places to go horse riding</li><br/><li>• Pretty houses – old fashioned</li><li>• Nice post office</li><br/><li>• Nice village</li><li>• Little traffic</li><li>• Quiet rural</li><li>• Not over built</li><br/><li>• Convenient</li><br/><li>• Farm animals</li><br/><li>• Footpaths</li><li>• I like country walks</li><br/><li>• Fun area</li><li>• Park is really cool because it has lots of cricket and sports facilities</li><br/><li>• I like the space available</li><li>• Wide open spaces</li><br/><li>• Living close to school and short walk to work</li></ul> |  |
|--|--|

## Appendix A08 – Annex 4: Primary School Event: Likes and Dislikes

### Young People Living for the Future – Primary School Visit 24<sup>th</sup> April 2007

#### Exercise 1 – Likes and dislikes/what needs to change

Methodology : the children were given two sets of post-it notes to record a) what they liked about where they live now/go to school etc – the emphasis being on now and b) what they disliked or things that needed to change in the future – trying to think ahead of what would make their area a better place. The results are recorded below, where a number of comments are identical or very similar these have been recorded once and a number inserted to indicate how many times that comment was made. Comments that raise similar issues/concerns have been grouped together.

#### Results :

Likes	dislikes
<ul style="list-style-type: none"> <li>• Being near to my friends/playing with my fiends 23</li> <li>• I like the fact that I can cycle along my road 3</li> <li>• Being able to ride my bike around school at weekends</li> <li>• I am close to the train station and the trains help me get to sleep</li> <li>• It is easy to walk to the station 2</li> </ul>	<ul style="list-style-type: none"> <li>• Too much pollution 5</li> <li>• Traffic/too many cars 22</li> <li>• Very busy/cars are too fast 3</li> <li>• Some dangerous roads 3</li> <li>• Noise because of cars</li> <li>• The traffic is really bad when I'm driving to school</li> <li>• The M3 is too noisy 2</li> <li>• Traffic on my road 3</li> <li>• No space for cyclists</li> <li>• People driving cars because people destroy the environment and make global warming and destroys the polar ice caps</li> <li>• Global warming – making animals</li> </ul>

<ul style="list-style-type: none"> <li>• I can walk to town and school</li> <li>• I like not having to walk to drive miles to places like the swimming pool, parks or school.</li> <li>• Being near to the tennis club 2</li> <li>• Being close to nice sports places 2</li> <li>• I like living near the countryside because of the nature 16</li> <li>• Being able to drive or walk a little way and find countryside 2</li> <li>• Views of the countryside</li> <li>• Lots of wildlife 3</li> <li>• I like where I live because it is quiet and it is also very peaceful and friendly place to live</li> <li>• Being close to the park 15</li> <li>• Lots of parks</li> <li>• Near to playing fields</li> <li>• I like to cycle down to the swings</li> <li>• Being able to walk to the park and take my dog 2</li> <li>• Lots of trees to climb</li> <li>• Lots of trees 2</li> <li>• I am near to school 9</li> <li>• I walk to school by myself</li> <li>• I walk to school with my friends 2</li> <li>• My school rules!</li> <li>• School is fun</li> <li>• Being close to one of the best colleges in England</li> <li>• I like Winchester because they have lots of places to have fun and nice walks</li> <li>• If you are bored you can go anywhere you like</li> </ul>	<p>extinct global warming</p> <ul style="list-style-type: none"> <li>• Vandalism</li> <li>• Graffiti</li> <li>• Lots of rubbish 2</li> <li>• People smoking 2</li> <li>• stealing</li> <li>• Too many tourists 2</li> <li>• Nasty/rude people 3</li> <li>• Weather 5</li> <li>• Only two bedrooms</li> <li>• I don't like the fact that the walls are not sound proof</li> <li>• Not being old enough to do stuff alone</li> <li>• I live too far away from most of my family</li> <li>• Not being close to my friends</li> <li>• School 5</li> <li>• Exams</li> <li>• We use too much electricity</li> <li>• Not enough parks</li> <li>• Living on a hill</li> <li>• guns</li> <li>• Good shops close down</li> </ul>
---	--

<ul style="list-style-type: none"> <li>• Lots of places to visit</li> <li>• History of Winchester</li> <li>• Nice facilities 2</li> <li>• Historic houses</li> </ul> <ul style="list-style-type: none"> <li>• I like the surroundings</li> </ul> <ul style="list-style-type: none"> <li>• Old things are here</li> <li>• Museums and history places to visit</li> </ul> <ul style="list-style-type: none"> <li>• I like the town of Winchester because of all the shops and its not too busy.</li> </ul> <ul style="list-style-type: none"> <li>• Not to much traffic</li> </ul> <ul style="list-style-type: none"> <li>• I love the town</li> </ul> <ul style="list-style-type: none"> <li>• Being close to the shops 12</li> <li>• Being able to walk to the shop and buy toys</li> <li>• Shops that are unique</li> <li>• Variety of shops</li> </ul> <ul style="list-style-type: none"> <li>• It is quite small so things are close</li> <li>• I like freedom</li> </ul> <ul style="list-style-type: none"> <li>• I can walk to the pet shop and get supplies for my hamster</li> <li>• I like going to the stables in my spare time</li> </ul> <ul style="list-style-type: none"> <li>• Walking to the shop to collect my comic and doctor who cards</li> </ul> <ul style="list-style-type: none"> <li>• I like the cycle tracks</li> <li>• Off-roading on my bike in the countryside</li> </ul>	<ul style="list-style-type: none"> <li>• Lots of big supermarkets/shops 3</li> <li>• Too many shops which are useless 5</li> <li>• Not being any shops near my house</li> </ul> <ul style="list-style-type: none"> <li>• Long way from Sainsbury's and Tesco's</li> </ul> <ul style="list-style-type: none"> <li>• Expensive houses</li> <li>• So many houses</li> <li>• It costs quite a lot to live in Winchester</li> <li>• Building on farms</li> <li>• Destroying the environment</li> </ul> <ul style="list-style-type: none"> <li>• I think they should stop building things on nature 2</li> </ul> <ul style="list-style-type: none"> <li>• too many people in Winchester 2</li> </ul> <ul style="list-style-type: none"> <li>• poor people</li> </ul> <ul style="list-style-type: none"> <li>• too many building sites</li> <li>• housing</li> </ul> <ul style="list-style-type: none"> <li>• not being near any beaches 4</li> </ul> <ul style="list-style-type: none"> <li>• all animals should be free from cages</li> </ul> <ul style="list-style-type: none"> <li>• my sister hogging the TV</li> <li>• living with my sister</li> <li>• getting into a fight with my family</li> </ul> <ul style="list-style-type: none"> <li>• having my flu jab</li> <li>• having teeth pulled out</li> </ul> <ul style="list-style-type: none"> <li>• nothing 2</li> </ul>
---	---

<ul style="list-style-type: none"><li>• I like horse riding</li><li>• I like my pets</li><li>• Playing football</li><li>• Swimming pool 3</li></ul> <ul style="list-style-type: none"><li>• The streets are clean</li></ul> <ul style="list-style-type: none"><li>• I like having a field nearby and a big street with lots of people I know</li></ul> <ul style="list-style-type: none"><li>• It is quiet</li><li>• Nice houses and well accommodated</li></ul> <ul style="list-style-type: none"><li>• I live next to a farm</li></ul> <ul style="list-style-type: none"><li>• I like my home</li><li>• House is cosy</li></ul> <ul style="list-style-type: none"><li>• I like having good equipment at school</li><li>• Good technology</li></ul> <ul style="list-style-type: none"><li>• Its not very busy 5</li></ul> <ul style="list-style-type: none"><li>• Knowing most people and seeing loads of people I know</li><li>• It is safe</li><li>• Friendly people 8</li><li>• Kind people that make you feel welcome to play – nice people that don't hurt your feelings</li></ul>	<ul style="list-style-type: none"><li>• the way houses look – should be greener</li></ul> <ul style="list-style-type: none"><li>• there are some old houses</li></ul> <ul style="list-style-type: none"><li>• improving technology</li><li>• too much modern technology</li></ul> <ul style="list-style-type: none"><li>• building on the countryside because it might be destroying the homes of animals</li></ul> <ul style="list-style-type: none"><li>• I don't like people trying to change things all the time when people don't want them to.</li></ul>
--	--



# Appendix A10

LSP/LDF meetings

Appendix A10 LSP/LDF liaison Frontloading/Live for the Future

Date	Meeting -Event	LDF matters raised
Thursday 25 <sup>th</sup> January 2007	LSP Board meeting  @ Hampshire County Council offices	Presentation to LSP board to brief them on LDF/SCS relationship and inform them of LDF/SCS 'frontloading' events planned for February/March
Wednesday 18h April 2007	'Young Persons Event'  @ West Downs Campus, Winchester	Joint event with partners to involve young people in spatial planning ('Young People Living for the Future)
Thursday 31 <sup>st</sup> May 2007	LSP exec Meeting  @ACE Centre Stoney Lane, Winchester	Presentation to give feed back on 'frontloading' events

# Appendix A11

## Questionnaire Results

# 1 Health, Wellbeing and Safe Communities

Please indicate how important you consider the following a) in your local area and b) in the whole District, by ranking the following in order of importance (7 most important - 1 least important).

Local Area		District
3	There are safe routes for pedestrians and cyclists	5
2	A wide range of sport/leisure and cultural services are available	1
6	There are good support services for the elderly and disabled	6
1	New developments are designed to minimise opportunities for crime	1
7	Transport services are available	7
4	Housing meets the recognised needs of all sections of the community	4
5	There are a range of services and activities for children and young people	3

# 2 Economic Prosperity

Please indicate how important you consider the following a) in your local area and b) in the whole District, by ranking the following in order of importance (7 most important - 1 least important).

Local Area		District
5	Town and village centres are successful and prosperous	5
2	Commuting distances (into and out of the area) are reduced	3
2	Suitable space is available to meet the needs of local businesses	2
6	Housing is available and affordable for people to live and work in the district	6
1	A wide range of training opportunities exist for those who need them	1
4	There are opportunities for people to work close to where they live	4
7	Public transport should be improved to reduce congestion	7

# 3 High Quality Environment

Please indicate how important you consider the following a) in your local area and b) in the whole District, by ranking the following in order of importance (7 most important - 1 least important).

Local Area		District
5	New developments (commercial and domestic) meet high energy-efficiency specifications, above the minimum requirements and incorporate renewable energy technologies	5
3	Local distinctiveness is understood and valued	3
6	Pollution levels (air, ground, water and light) are low	6
7	Existing natural habitats are protected and enhanced and new ones created	7
4	Increased densities and 'brownfield' sites should be promoted to avoid using 'greenfield' sites	4
2	Sufficient off road car parking spaces should be available	1
1	New development should be concentrated in or on the edge of existing settlements	2

# 4 Inclusive Society

Please indicate how important you consider the following a) in your local area and b) in the whole District, by ranking the following in order of importance (7 most important - 1 least important).

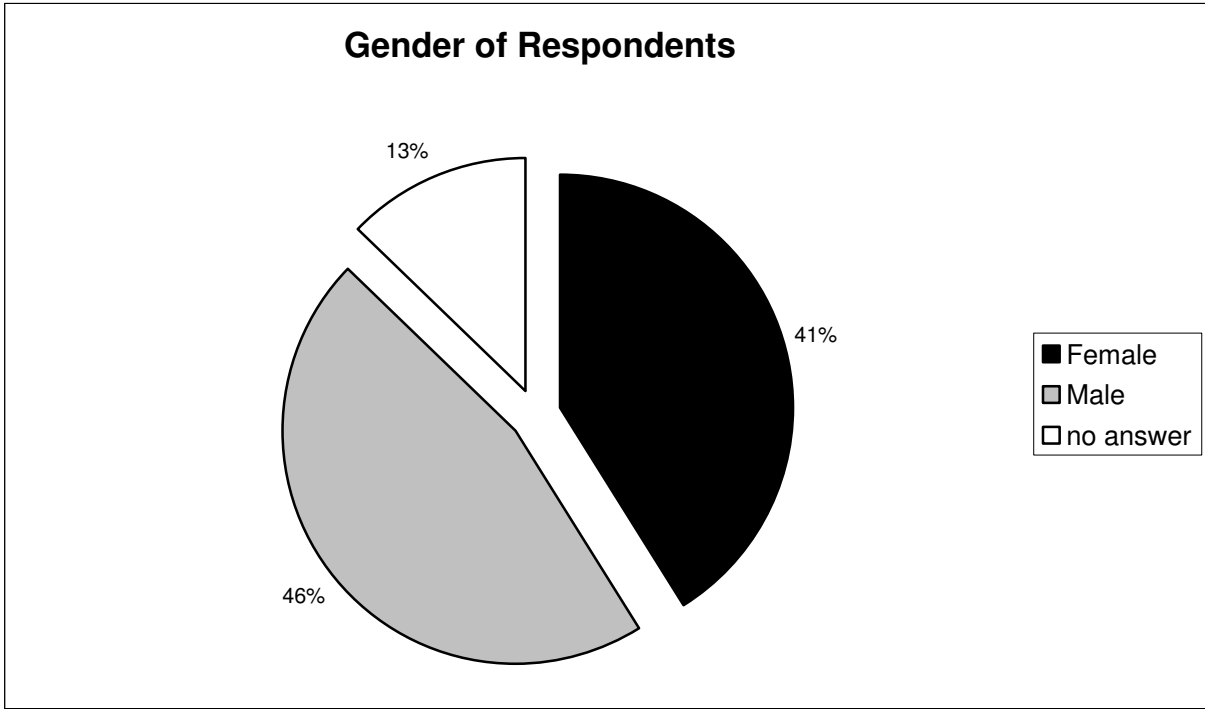
Local Area		District
6	The needs of future generations are taken into account in current actions and decisions	4
4	People participate in decisions about the future of their communities	2
5	Everybody has access to the services/facilities they need	6
7	The development of community centres, schools and health services should match the planned growth in housing	7
1	New housing should offer a choice of size and types of homes	1
3	All development should have good access to public transport facilities	5
2	Open space and recreational facilities are accessible and available to all	3

## Who Responded?

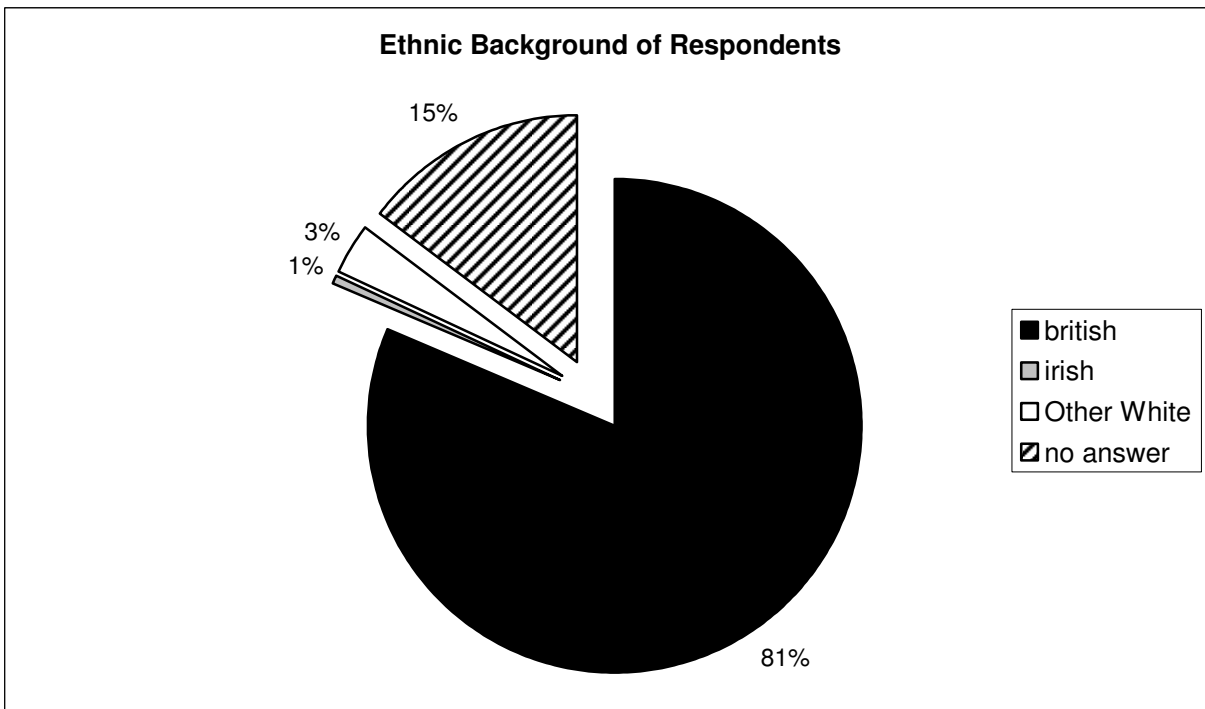
A total of 156 questionnaires were completed. 91 completed on-line and a further 56 paper copies returned. It should be noted that 8 percent of the questionnaires were not completed correctly (for example by giving the same ranking to all of the options) and could not therefore contribute to the final totals.

The following charts provide a breakdown of who completed the questionnaire. They show that a cross section of the community was reached, although all respondents who completed the ethnic background section were white.

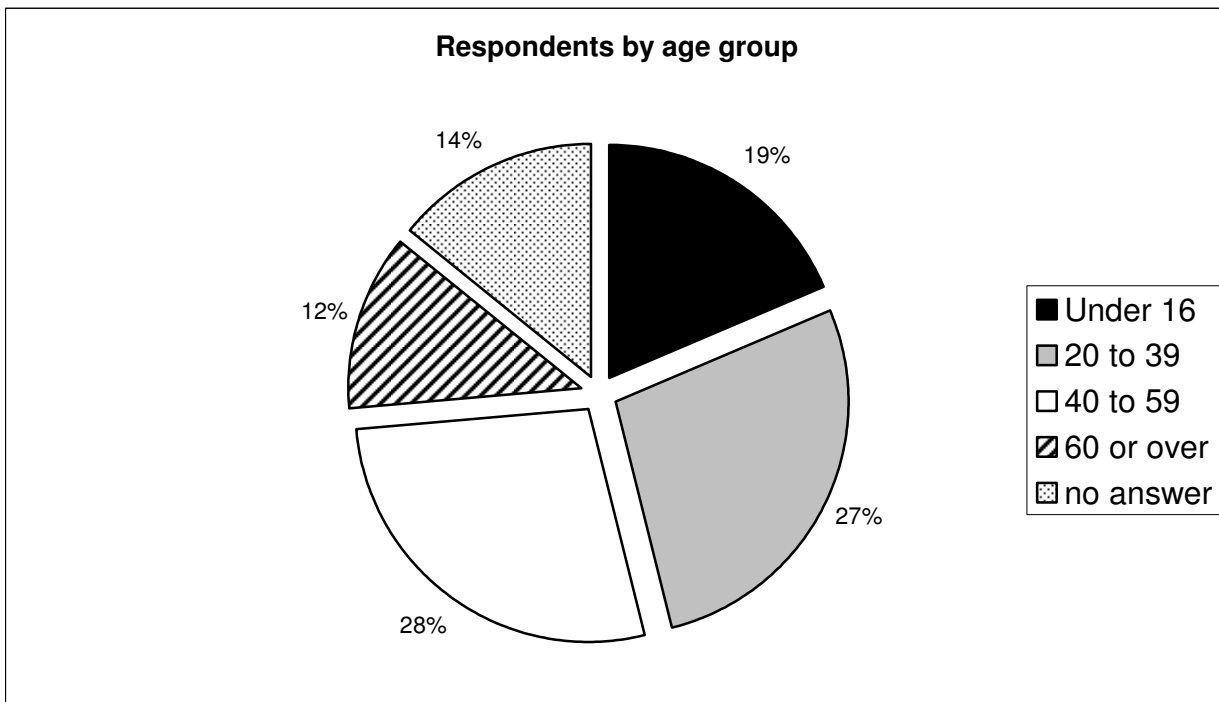
**Figure 1**



**Figure 2**



**Figure 3**





# Appendix A12

## Citizen Panel Results

# *Citizens'*

**P A N E L**

# *Questionnaire*

**October 2006**

The twelfth Citizens' Panel questionnaire,

**Planning Winchester's Future**  
Results

## Planning Winchester's Future

The current style of local planning in Winchester District is changing. Sustainable Development is central to the reformed planning system. In short this means *“development that meets the needs of the present without compromising the ability of future generations to meet their own needs”*.

### 18 In the following three broad areas, what do you think should be the Council's priorities for planning for future development in the District up to 2026?

<b>Housing</b>		Very Important	Important	Not Important	Not at all necessary
<b>a</b>	Support the extension of existing settlements	<b>18.2%</b>	<b>55.8%</b>	<b>16.8%</b>	<b>9.2%</b>
<b>b</b>	Support the provision of new settlements	<b>5.3%</b>	<b>31.7%</b>	<b>30.4%</b>	<b>32.6%</b>
<b>c</b>	To provide a diverse range of homes to suit all needs.	<b>44.5%</b>	<b>47.5%</b>	<b>4.9%</b>	<b>3.1%</b>
<b>d</b>	To only allow new housing where sufficient employment opportunities exist or are planned.	<b>40.4%</b>	<b>39.9%</b>	<b>14.7%</b>	<b>5.0%</b>
<b>Transport and the Economy</b>		Very Important	Important	Not Important	Not at all necessary
<b>e</b>	To plan new development and service provision at the same time.	<b>65.0%</b>	<b>30.8%</b>	<b>2.8%</b>	<b>1.4%</b>
<b>f</b>	To promote a local culture that is vibrant and diverse and encourages local participation	<b>31.2%</b>	<b>50.1%</b>	<b>13.1%</b>	<b>5.6%</b>
<b>g</b>	Allow some development in the countryside, to promote the rural economy.	<b>13.9%</b>	<b>51.9%</b>	<b>17.1%</b>	<b>17.1%</b>
<b>h</b>	To ensure all new development has access by means other than the private car to facilities and services	<b>61.2%</b>	<b>32.2%</b>	<b>4.9%</b>	<b>1.7%</b>
<b>i</b>	To encourage and support the provision of good public transport to link urban and rural centres	<b>70.2%</b>	<b>27.2%</b>	<b>1.7%</b>	<b>0.9%</b>

## Planning Winchester's Future

<b>The Environment</b>		Very Important	Important	Not Important	Not at all necessary
<b>j</b>	To encourage the construction of buildings that can adapt and change over time to minimise the use of resources	<b>37.8%</b>	<b>52.7%</b>	<b>7.5%</b>	<b>2.0%</b>
<b>k</b>	To safeguard the countryside and the natural environment in the District by directing development mainly to existing built-up areas	<b>59.4%</b>	<b>32.3%</b>	<b>6.5%</b>	<b>1.7%</b>
<b>l</b>	To protect the historic environment of the District	<b>59.3%</b>	<b>37.8%</b>	<b>2.5%</b>	<b>0.4%</b>
<b>m</b>	To ensure all new development incorporates accessible green space	<b>51.7%</b>	<b>40.1%</b>	<b>7.0%</b>	<b>1.2%</b>
<b>n</b>	Promote use of renewable energy, energy saving mechanisms and recycling to reduce the impact of climate change.	<b>69.4%</b>	<b>26.3%</b>	<b>3.1%</b>	<b>1.2%</b>
<b>o</b>	Retain existing trees and encourage the planting of more	<b>73.4%</b>	<b>22.9%</b>	<b>3.0%</b>	<b>0.7%</b>

### 19 Please rate the following aspects of where you live?

		Excellent	Good	Acceptable	Poor	Unacceptable
<b>a</b>	Its overall character	<b>36.3%</b>	<b>49.2%</b>	<b>12.8%</b>	<b>1.3%</b>	<b>0.4%</b>
<b>b</b>	The quality of the built environment	<b>15.9%</b>	<b>55.8%</b>	<b>25.4%</b>	<b>2.4%</b>	<b>0.5%</b>
<b>c</b>	The quality of the natural environment	<b>37.5%</b>	<b>44.4%</b>	<b>16.0%</b>	<b>1.6%</b>	<b>0.5%</b>
<b>d</b>	The range of services and facilities it has to offer	<b>9.7%</b>	<b>31.8%</b>	<b>38.5%</b>	<b>17.1%</b>	<b>2.9%</b>
<b>e</b>	The opportunity for everyone to be involved in the decisions that affect the community	<b>8.5%</b>	<b>29.0%</b>	<b>38.9%</b>	<b>20.7%</b>	<b>3.0%</b>
<b>f</b>	Accessibility to neighbouring areas for work, shopping or leisure purposes	<b>15.8%</b>	<b>34.0%</b>	<b>29.8%</b>	<b>17.8%</b>	<b>2.7%</b>
		Non-existent	Very Low	Low	High	Unacceptably high
<b>g</b>	The Level of Crime	<b>3.9%</b>	<b>35.2%</b>	<b>55.2%</b>	<b>4.6%</b>	<b>1.1%</b>

# Appendix A13

Live for the Future press release

# Appendix A13: Campaign Promotion: Press Releases

## Live for the Future... A Sustainable Winchester District

---

Winchester City Council wants to ask you to *Live for the Future*. We hear lots about being more sustainable and preventing damage to the environment, but what does that really mean for the way we live in the Winchester District?

The Council wants to help local communities become more 'sustainable', which means they are not only great places to live, work and do business - but also take care of the environment and leave a good legacy for future generations.

We are working towards two important documents, the Local Development Framework and the Community Strategy: both look forward twenty years and will help us enhance our city, towns and villages, adapt to pressures such as climate change - and maintain a good quality of life for everyone.

Cllr George Beckett, Leader of the Council said, "It's hard to imagine what you will want for yourself, your children and your community in twenty years time, especially when things are changing so rapidly. But to become a sustainable community we need to be thinking at least this far ahead. It's really important that people take time to consider the future of our City and District and talk to us about what will make their communities fit for the challenges of the 21<sup>st</sup> Century.

"Taking part in the Live for the Future events and questionnaire is a great opportunity for people to let us know their views and also to understand more about the work we are doing to ensure the Winchester District continues to be one of the best places to live in the UK."

We will be holding our 'Live for the Future' events all round the District in February and March, asking people how sustainable their area is, what we should maintain, and what needs to change. If you can not make one of our events you can still let us have your views by visiting our website [www.winchester.gov.uk](http://www.winchester.gov.uk) and filling in the quick and simple on-line form. Alternatively you can call 01962 840 222 and we will send you a paper copy of the questionnaire.

Get involved and feel proud of the district where you live - why not sign up for our e-newsletter to follow the progress of the 'Live for the Future' campaign? Just register on the website and find out what other people want for our District.

For more information about dates and times of our events, about sustainable communities and what you can do to help, visit [www.winchester.gov.uk](http://www.winchester.gov.uk)

Date published: 12/03/2007