

**DRAFT**

# **Winchester Future 50 Conservation Area Project**

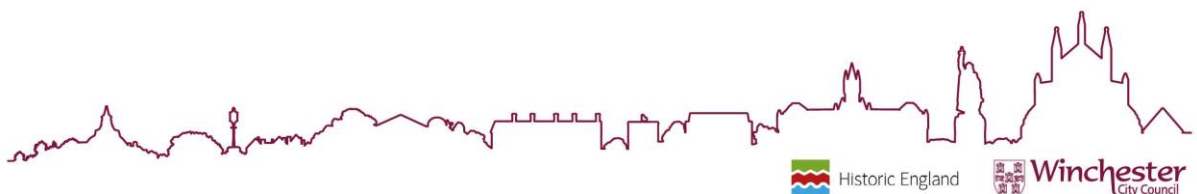
## **WAR MEMORIALS**

### **Management Plan and Strategy 2020**



## TABLE OF CONTENTS

How is this document helpful?	2
Development Management	
How is this document helpful?	
Community Context	2
Current Situation	4
War Memorials General Issues and Remedies	5
Specific Issues and Remedies	7
War Memorials Management Plan	8
Appendix 1: Winchester Future 50 Conservation	10
Area Project Survey Data 2020	
Appendix 2: Additional Information	15
War Memorials Trust Advice	
Historic England Advice	
Appendix 3: Additional Information	16
Website Links	
Glossary	



## WINCHESTER FUTURE 50 CONSERVATION AREA PROJECT

### MANAGEMENT PLAN AND STRATEGY 2020

#### SIGNIFICANT ASSETS

##### WAR MEMORIALS

###### **How is this document helpful ? Development Management**

This document has been produced in order to aid applicants, agents and decision makers in submitting and assessing planning applications affecting heritage assets and applications for listed building consent, within the two character areas St Giles Hill and The Walled Town.

The updated local guidance complements national guidance and supports the Local Plan 2011 – 2029. Changes to the council's guidance relating to the historic built environment are necessitated by and responsive to, *inter alia*, the Localism Act 2011, the General Permitted Development Order (England) 2015, the National Planning Policy Framework 2019, changes to guidance published by Historic England, and recent case law.

Contextual information and definitions of key terms are included within the document in order to guide readers who are less familiar with planning practice relating to historic buildings and places.

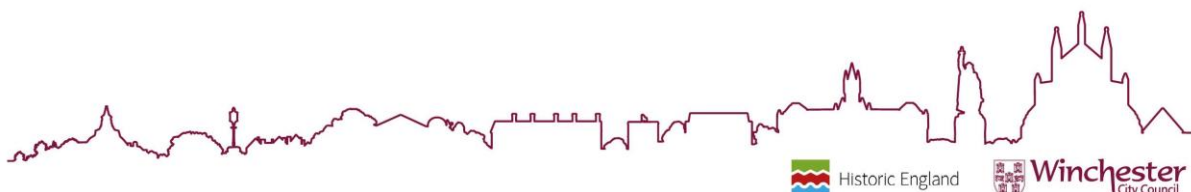
However, the emphasis of this document is on providing detailed guidance which is responsive to the particular circumstances of the areas, including those relating to current and anticipated challenges and opportunities presented by the need for new housing and other types of development, the rural character of much of the borough, and the quality and sensitivity of the area's historic, natural and built environment.

###### **How is this document helpful ? Community Context**

This is an inclusive document which will engage with many different people and organisations. It will depend on the support of the community to achieve its objectives.

It is aimed primarily at the residents, businesses, developers and others living and working in the area. The Conservation Area belongs to its residents, as well as the whole community, and their priorities are reflected in this document.

The document has also been prepared to align conservation objectives within different parts of the council, and provide a single point of reference for the



management of the area. It represents our shared commitment to conserve the special architectural and historic character, and to help manage sensitive new development and refurbishment where appropriate to successfully preserve and enhance the quality and character of the area.

War Memorials are a highly emotive and commemorative focus of interest within the area. These structures provide reminders and tangible connections to the sacrifices and losses the community has faced during times of conflict and disaster. War Memorials come in all shapes and sizes and provide richness to the streets and villages of the district.

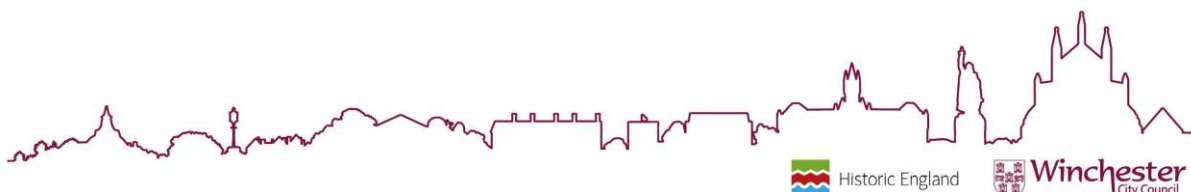
A significant part of the *Winchester Future 50 Conservation Area Project* involved gathering an inventory list, photograph and condition report of the War Memorials within two of the Winchester Conservation Area Character areas; St Giles and the Walled Town. The recorded data and information can be seen through the new *Winchester Future 50 Conservation Area Project Map layer*. Further information into the project and the outcomes can also be accessed through the *Winchester Future 50 Conservation Area Project* website.

This important relevant information has also helped to form the following War Memorials Conservation Management Plan and Strategy (DRAFT), which is currently inviting public comment.

It includes an outline of the current issues relating to the management of these significant assets including their setting. It also included potential remedies and a time specific strategy for achieving this. The appendices contain the Winchester Future 50 Conservation Area Project survey evidence and additional guidance and initiatives to help manage these important structures.

Should you wish to comment on the content or make suggestions for possible improvement please email Winchester Future 50 Team

[Winchesterfuture50@winchester.gov.uk](mailto:Winchesterfuture50@winchester.gov.uk)



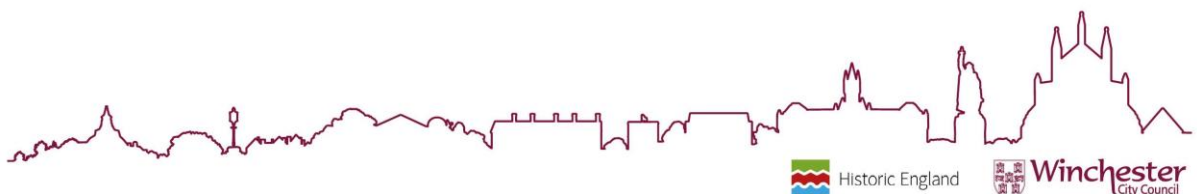
## CURRENT SITUATION

The surveys completed by the volunteers of the Winchester Future 50 project show that generally the condition of the War Memorials within the Conservation Area are good. There are no incidences of vandalism or graffiti.

However there are a number which require conservation, cleaning and one incidence of structural repairs but many also require improved legibility to inscriptions.

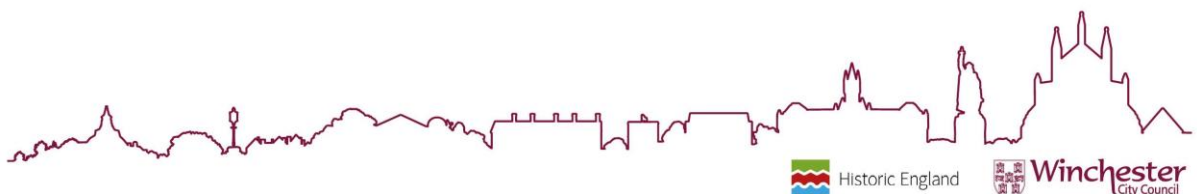
The areas immediately around the memorials require general maintained including re-pointing of paving and litter picking.

There is no lighting or interpretation to any of the memorials which appears somewhat of a missed opportunity for highlighting these sites as all possess high architectural and artistic qualities as well as sites for reflection respect and community cohesion.



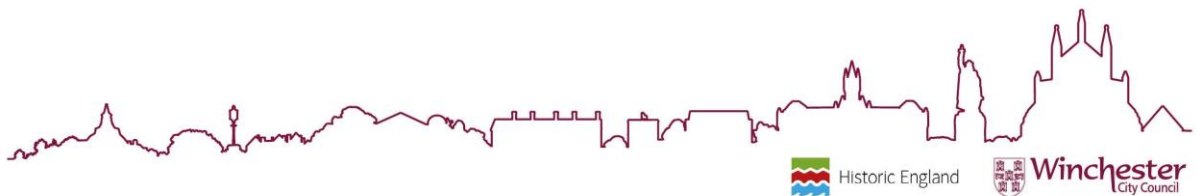
## WAR MEMORIALS GENERAL ISSUES AND REMEDIES

1. LACK OF UP TO DATE EASILY ACCESSIBLE INFORMATION ON DESIGNATED AND NON-DESIGNATED HERITAGE ASSETS WITHIN THE CONSERVATION AREA INCLUDING WAR MEMORIALS
  - **Produce new on-line guidance regarding best practice and maintenance on Historic Environment and Urban Design Web pages including other areas of advice and support.**
  
2. LACK OF AWARENESS AND SIGNIFICANCE OF THE EXISTING DESIGNATED HERITAGE ASSETS AND LOCALLY DISCTINCTIVE STRUCTURES INCLUDING WAR MEMORIALS.
  - **Make available information showing the position, the UPRN, photograph, link to relevant designation document, link to relevant policy and guidance on public Web based mapping.**
  - **Share data gathered through War Memorials survey with War Memorials on line and War memorials Trust Regional volunteers.**
  - **Share data with Tourism and Arts to support potential War Memorials Treasure Trail and events.**
  
3. LACK OF UP-TO DATE EASILY ACCESSIBLE INFORMATION ON THE MANAGEMENT OF DESIGNATED AND NON-DESIGNATED HERITAGE ASSETS WITHIN THE CONSERVATION AREA INCLUDING WAR MEMORIALS
  - **Produce new on-line guidance regarding best practice and maintenance on Historic Environment and Urban Design Web pages including other areas of advice and support.**
  - **Produce specific management plan and strategy for War Memorials.**
  
4. POTENTIAL ERROSION OF HISTORIC DETAILING ON NON-DESIGNATED HERITAGE ASSETS.
  - **Produce new on-line guidance regarding best practice and maintenance on Historic Environment and Urban Design Web pages including other areas of advice and support.**
  - **Nominate any potential Non-designated Heritage Assets and the potential emerging Local List of Heritage Assets for assessment against test criteria**
  
5. NEED TO RETAIN AND NURTURE CLOSE COMMUNITY INVOLVEMENT IN THE FUTURE STEWARDSHIP OF THE CONSERVATION AREA
  - **Devise a Volunteers Retention Strategy including specific Winchester Future 50 Volunteers web pages.**
  - **In line with the emerging Volunteer Retention Strategy explore the potential for training existing volunteers to nominate any memorials highlighted through the survey for statutory listing through an**



application to Historic England and share data through Historic England  
*Enhancing the List* (if relevant)

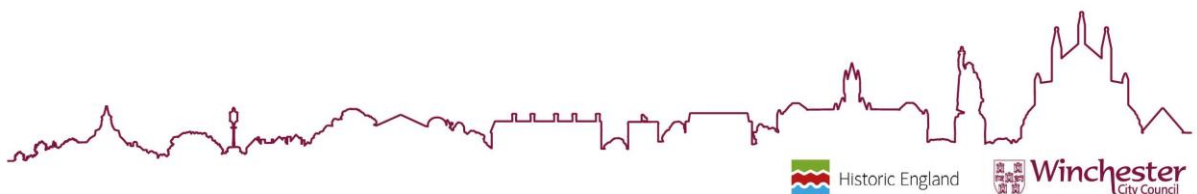
DRAFT FOR COMMENT



## SPECIFIC ISSUES AND REMEDIES

(See Appendix 1 Winchester Future 50 Survey Data)

- LACK OF CLARITY ON OWNERSHIP OR RESPONSIBILITY FOR MAINTENANCE.
  - Explore and establish ownership and custodianship to share data from the project and highlight new web based guidance through the production and sharing of an information pack specific to their memorial.
- LACK OF GENERAL MAINTENANCE TO AREA SURROUNDING MEMORIALS INCLUDING PAVING, TURF AND REMOVAL OF LITTER.
  - Explore potential funding general maintenance scheme for immediate setting of War Memorial including regular litter picking.
- CLEANING AND CONSERVATION REQUIRED TO THE FABRIC OF A NUMBER OF WAR MEMORIALS.
  - Through additional training of Historic Environment staff, introduce a *Buddy system* to help support local funding bids for maintenance of war memorials including cleaning, conservation and improving legibility of eroded inscriptions.
- CONSERVATION REQUIRED TO IMPROVE LEGIBILITY OF INSCRIPTIONS/DEDICATIONS A NUMBER OF MEMORIALS
  - Through additional training of Historic Environment staff, introduce a *Buddy system* to help support local funding bids for maintenance of war memorials including cleaning, conservation and improving legibility of eroded inscriptions.
- POTENTIAL ENHANCEMENTS INCLUDE ARCHITECTURAL LIGHTING AND SPECIFIC INTERPRETATION.
  - Explore potential funding
- NEED FOR ADDITIONAL RESOURCES/ FUNDING
  - Through additional training of Historic Environment staff, introduce a *Buddy system* to help support local funding bids for maintenance of war memorials including cleaning, conservation and improving legibility of eroded inscriptions.





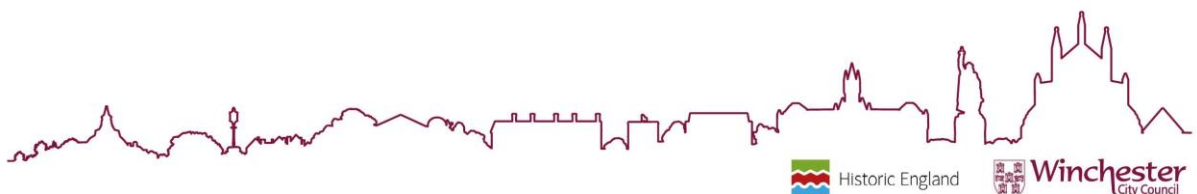
## WAR MEMORIALS MANAGEMENT STRATEGY

### 6-12 MONTHS

- Produce new on-line guidance regarding best practice, maintenance and opportunities for funding for Historic Environment and Urban Design Web pages.
- Make available information showing the position, the UPRN, photograph, link to relevant designation document, link to relevant policy and guidance on public Web based mapping.
- Share data gathered through War Memorials survey with War Memorials on line and War memorials Trust Regional volunteers.
- Explore and establish ownership and custodianship to share data from the project and highlight new web based guidance through the production and sharing of an information pack specific to their memorial.
- Explore potential funding general maintenance scheme for immediate setting of War Memorial including regular litter picking.
- In line with the emerging Volunteer Retention Strategy explore the potential for training existing volunteers to nominate any memorials highlighted through the survey for statutory listing through an application to Historic England and share data through Historic England *Enhancing the List* (if relevant)
- Nominate any potential Non-designated Heritage Assets and the potential emerging Local List of Heritage Assets for assessment against test criteria
- Pilot the adoption process.
- Share data with Tourism and Arts to support potential War Memorials Treasure Trail and events.

### 1-2 YEARS

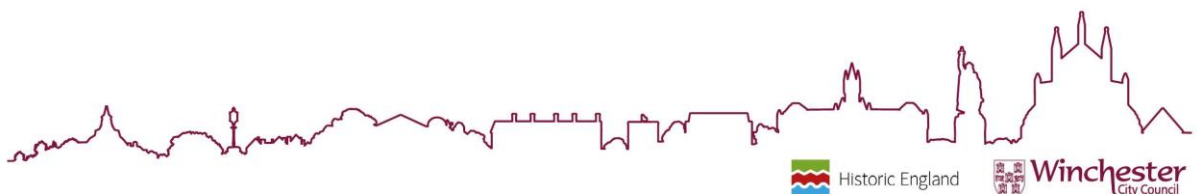
- Establish a strategy for regular general maintenance /litter picking of area surrounding memorial.
- Explore potential funding for enhancements; architectural lighting strategy, interpretation.



- Through additional training of Historic Environment staff, introduce a *Buddy system* to help support local funding bids for maintenance of war memorials including cleaning, conservation and improving legibility of eroded inscriptions.
- Explore the potential for funding for extending the survey of Conservation Areas including War Memorials to facilitate the production of guidance and management strategies district wide.

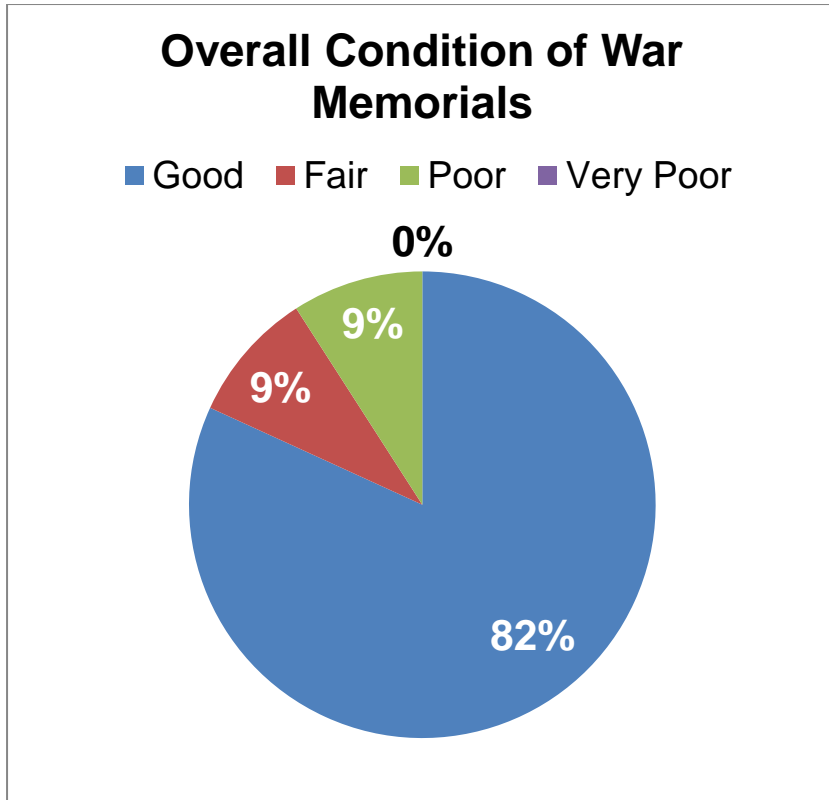
## 2-5 YEARS

- District wide production of Conservation Area Management Plans and Strategies across the district to help inform Heritage Strategy
- Explore Heritage Strategy initiative for the district



**APPENDIX 1**

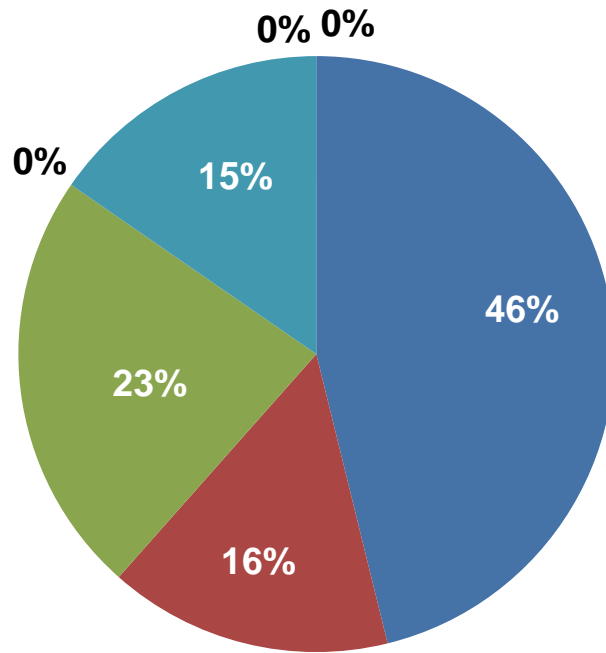
**WINCHESTER FUTURE 50 CONSERVATION AREA PROJECT SURVEY DATA 2020**



DRAFT FOR COMMENT

## Condition of Lettering on War Memorials

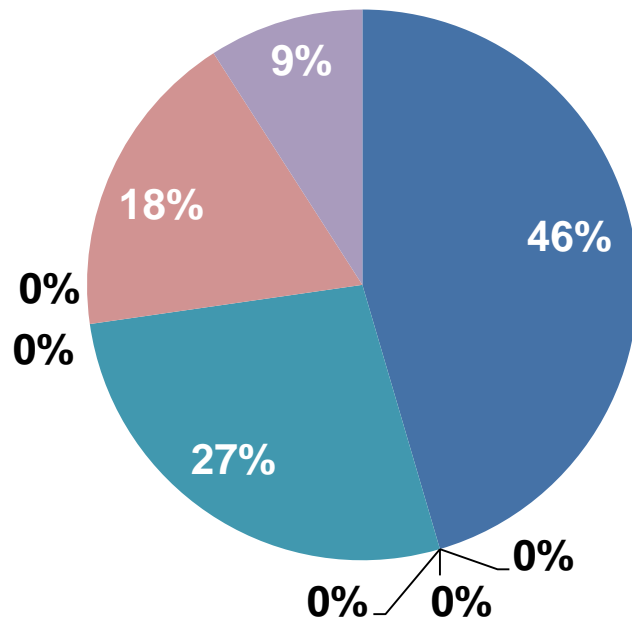
- Good
- Fading/Weathered
- Some illegible/missing inscriptions
- Most or all illegible/missing
- Obscured by surface dirt/pollution
- Obscured by biological growth
- Obscured by graffiti/vandalism



DRAFT

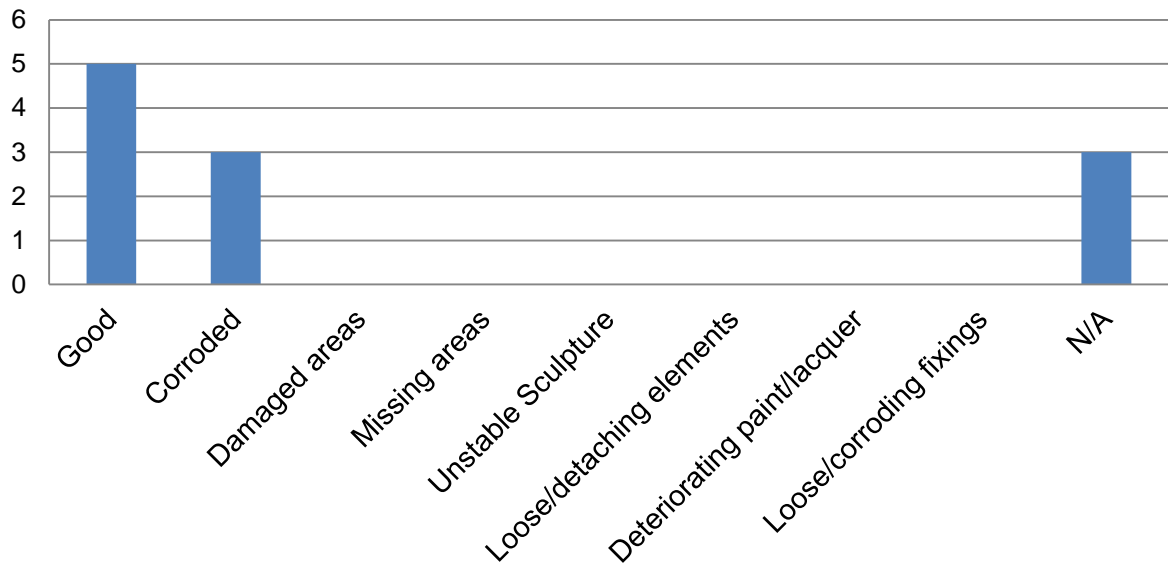
## Condition of Stonework on War Memorials

- Good
- Badly weathered/eroded
- Covered in pollution/dirk brick
- Graffiti
- Biological growths
- Deep cracks
- open joints/loose pointing
- Damanged/loose/missing areas
- Stained by metal elements/fixings
- N/A

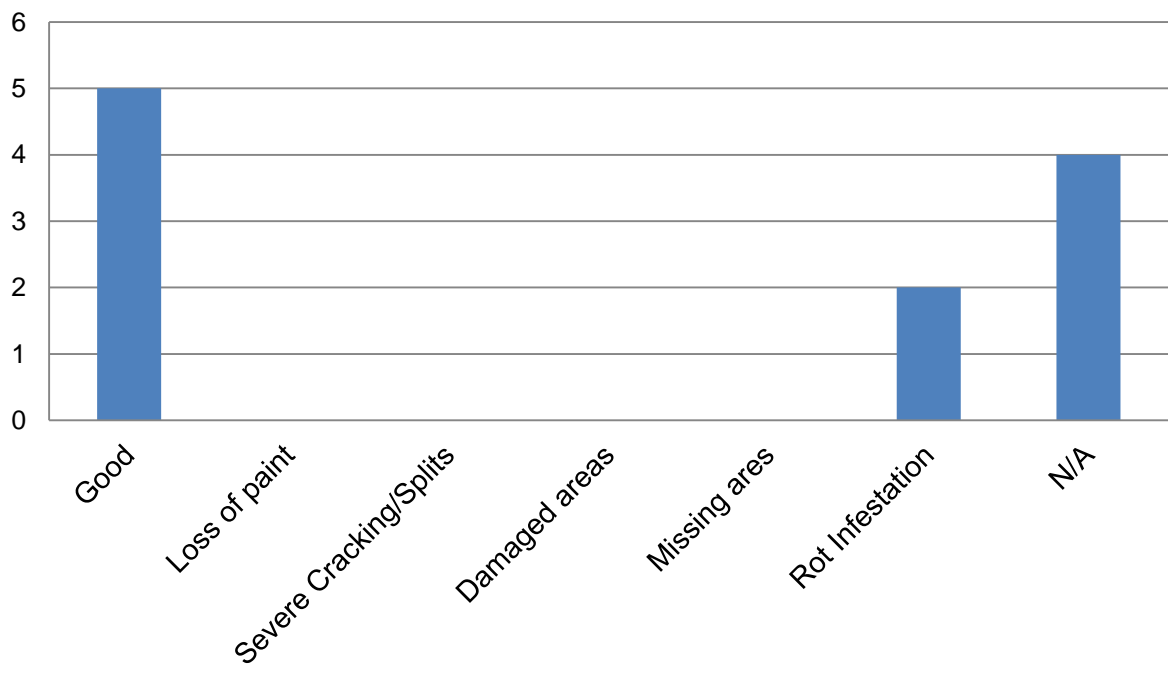


DRAFT

### Condition of Metalwork on War Memorials

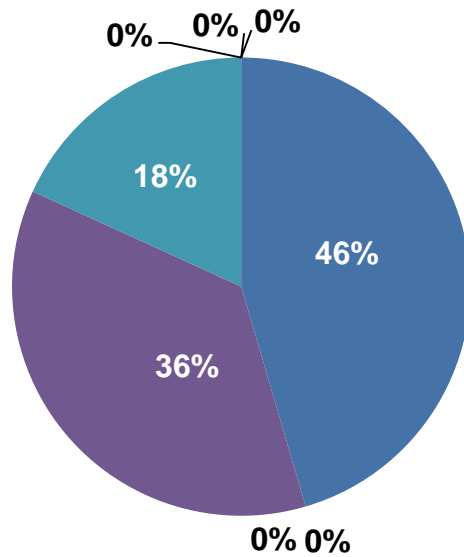


### Condition of Timber on War Memorials



## Condition of the Surroundings to War Memorials

- Good
- Overhanging/overgrown vegetation
- Graffiti
- Cracked/damaged Paving
- Litter/Fly tipping
- Uneven surfaces
- Damaged railings/gates/wall surrounding
- Lighting



DRY

## APPENDIX 2

### ADDITIONAL INFORMATION

#### War Memorials Trust

Additional information regarding the care and availability of grant funding for the maintenance of War Memorials is provided by the *War Memorials Trust* [<http://www.warmemorials.org/>].

Alongside this, the War Memorials Trust is currently recruiting additional Regional Volunteers to take on an active role in achieving its objectives. The role of Regional Volunteers can differ but primarily centre on recording the condition of War Memorials; researching the history and promoting charity events. For information regarding becoming a Regional Volunteer please refer to the following link:

[Becoming a Regional Volunteer](http://www.warmemorials.org/regional-volunteers/) [<http://www.warmemorials.org/regional-volunteers/>]

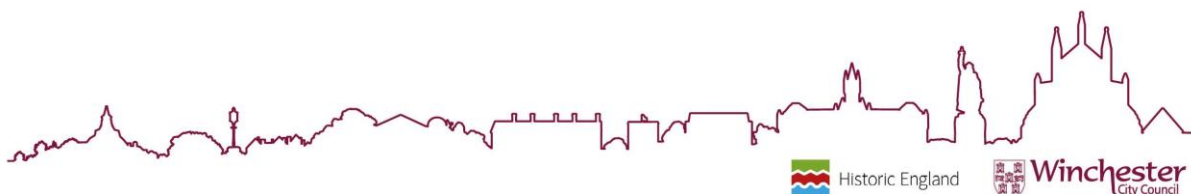
In conjunction, the War Memorials Trust will be running multiple workshops between 2019-2022. These will be covering a multitude of topics including the Challenges of Conservation and the availability of Grant funding. Further information regarding these workshops and the dates will be announced via the War Memorials Trust website via the following link:

[Conferences/Workshops/Training](http://www.warmemorials.org/conferences/) [<http://www.warmemorials.org/conferences/>]

#### Historic England

Historic England provide comprehensive guidance on conserving and cleaning War Memorials, the links to this information can be found via the side panel of this page. In addition with this and the information provided by the War Memorials Trust, Historic England also provides further information regarding Grant funding, which can also be found on the side of this page.

Due to the special and significant nature of War Memorials, they are sometimes preserved through Statutory Listing. This establishes further protection and would require Listed Building Consent before any works commence. Information regarding this can be found on the *Listed Building* [LINK] page of the Historic Environment webpage and also via the Planning Portal linked below: *Listed Building Consent* [[https://www.planningportal.co.uk/info/200126/applications/60/consent\\_types/7](https://www.planningportal.co.uk/info/200126/applications/60/consent_types/7)]





## APPENDIX 3

### ADDITIONAL INFORMATION

#### Website Links

Winchester City Council - Historic Environment and Urban Design

<https://www.winchester.gov.uk/historic-environment>

Winchester Future 50 Conservation Area GIS Map Layer

<https://winch.maps.arcgis.com/apps/webappviewer/index.html?id=c856364e7dfc401783f1711890156d6c>

Winchester Future 50 Volunteer Page

<https://www.winchester.gov.uk/historic-environment/conservation-areas/volunteering>

Historic England Guidance on Looking After War Memorials

<https://historicengland.org.uk/advice/technical-advice/war-memorials/>

Historic England Guidance on Technical Conservation

<https://historicengland.org.uk/advice/technical-advice/buildings/technical-conservation-guidance>

Historic England Guidance on Types of War Memorials

<https://historicengland.org.uk/images-books/publications/types-of-war-memorial/>

Historic England Guidance on Grants for War Memorials

<https://historicengland.org.uk/services-skills/grants/our-grant-schemes/war-memorials/>

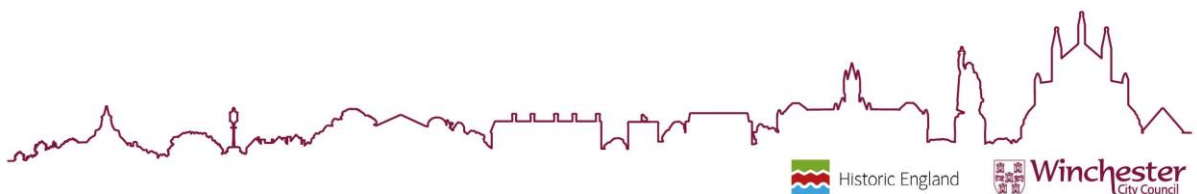
Historic England War Memorial Gallery

<https://historicengland.org.uk/listing/apply-for-listing/listing-priorities/war-memorials-listing-project/war-memorials-gallery/>

Historic England List Search

<https://historicengland.org.uk/listing/the-list/>

War Memorials Trust



<http://www.warmemorials.org/>

War Memorials Trust Guidance on Grants

<http://www.warmemorials.org/grants/>

Winchester City Council - War Memorials

<https://www.winchester.gov.uk/historic-environment/war-memorials>

Winchester City Council Cemeteries Department

<https://www.winchester.gov.uk/community-recreation/cemetery-fees>

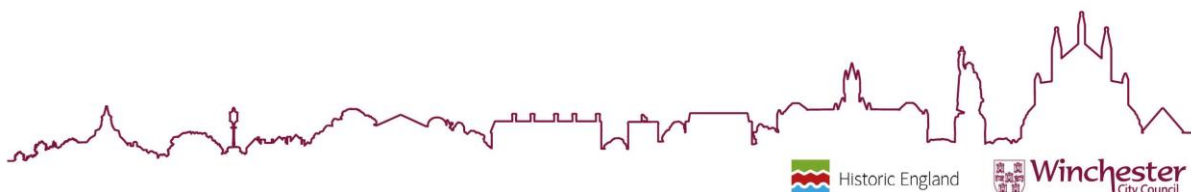
## Glossary

**Conservation Area....** Conservation Areas are described as areas of 'special architectural or historic interest the character or appearance of which it is desirable to preserve or enhance' Planning (Listed Buildings and Conservation Areas) Act 1990. They are designated by local planning authorities. The legislation relating to Local Planning guidance and advice concerning conservation areas is set out through this and the act mentioned above. Conservation areas are part of our local environment with special architectural or historic qualities. They are established by the council, in consultation with the local community, to help preserve and enhance the specific character of these areas for everybody.

**Conservation Area Appraisals....** To identify the special character of its conservation areas, the Council has already completed a number of 'Conservation Area Character Appraisals' which consider the historic development of each area and record its most notable features. Copies of these appraisals are available on the Historic Environment Conservation Area webpage.

**Conservation Area Management Plan....** Conservation plans are recommended for all classes of heritage asset, where appropriate and proportionate, and may also form an element of a wider regeneration strategy. They may be used to identify necessary works of conservation or consolidation as well as on-going management tasks and monitoring of the condition of features identified as vulnerable in the appraisal.

**Local List of Heritage Assets....** Historic England suggests in their Local Heritage Listing Advice Note 7 that Local Planning Authorities should aim to identify and compile a list of **Local Heritage Assets....** These are individual buildings, structures, monuments, valued open spaces, or designed landscapes that fall short of meeting the statutory tests to be included on the National List of Buildings England, but are valued highly for their heritage significance by the surrounding communities in which they sit.



## Heritage Assets....

**Designated Heritage Assets.....** When a building is described as listed it means that it is included on a list of buildings which are considered to be of sufficient historic or architectural interest to merit special protection. The list is drawn up by the Department for Culture, Media and Sport on the advice of Historic England. Listed buildings are protected by law under s.69 Planning (Listed Buildings and Conservation Areas) Act 1990. Buildings are listed so that we can identify and protect our architectural heritage. However, this does not suggest that it must be preserved for all time, rather which care will be taken over the decisions affecting its future. Additional information regarding the listing process and the affects on ownership can be found through the Historic England guides on listed and historic buildings.

**Non-Designated Heritage Assets....** Non-Designated Heritage Assets are individual buildings, structures, monuments, open spaces or designed landscapes that display a degree of heritage interest. They do not benefit from any form of statutory protection, but they can often add a richness to the character and appearance of an area, and as such, merit consideration in the planning process.

**Article 4 Directions....** Article 4 of the GPDO (General Permitted Development (England) Order 2015) gives local planning authorities the power to limit these 'permitted development rights' where they consider it necessary to protect local amenity or the wellbeing of the area. Using the provisions of Article 4 of the GPDO brings certain types of development back under the control of a local planning authority so that potentially harmful proposals can be considered on a case by case basis through planning applications.

**Buildings of Faith.....** In the 20th century England's landscape of faith buildings became ever more rich and diverse. Faiths arriving and developing in this country outside the Established Christian church form an important and expanding part of our society. Increasing our knowledge and understanding in this area is an important and much needed area of Historic England's work. Places of worship, whether adapted or purpose-built, tell much about the development and histories of these groups in England.

**Memorials.....** Most typically a freestanding cross or sometimes an obelisk or column, usually bearing the names of those who had died in the conflict, was erected in a prominent place. Exceptionally, some include civilians killed by enemy action or in war work. Most are modest affairs, albeit with deep significance and poignancy for the local community where they stand. But especially if there was a wealthy local patron, or in larger towns and cities, memorials were often more ambitious. Many were imposing ensembles of architecture and sculpture, often depicting servicemen in uniform. Other memorials include:

- memorial plaques in places of worship, workplaces and educational establishments

Found mainly in places of worship are:

- memorial stained glass windows, seats, organs, rolls of honour, regimental flags, books of remembrance, furniture
- lychgates



DRAFT FOR COMMENT

