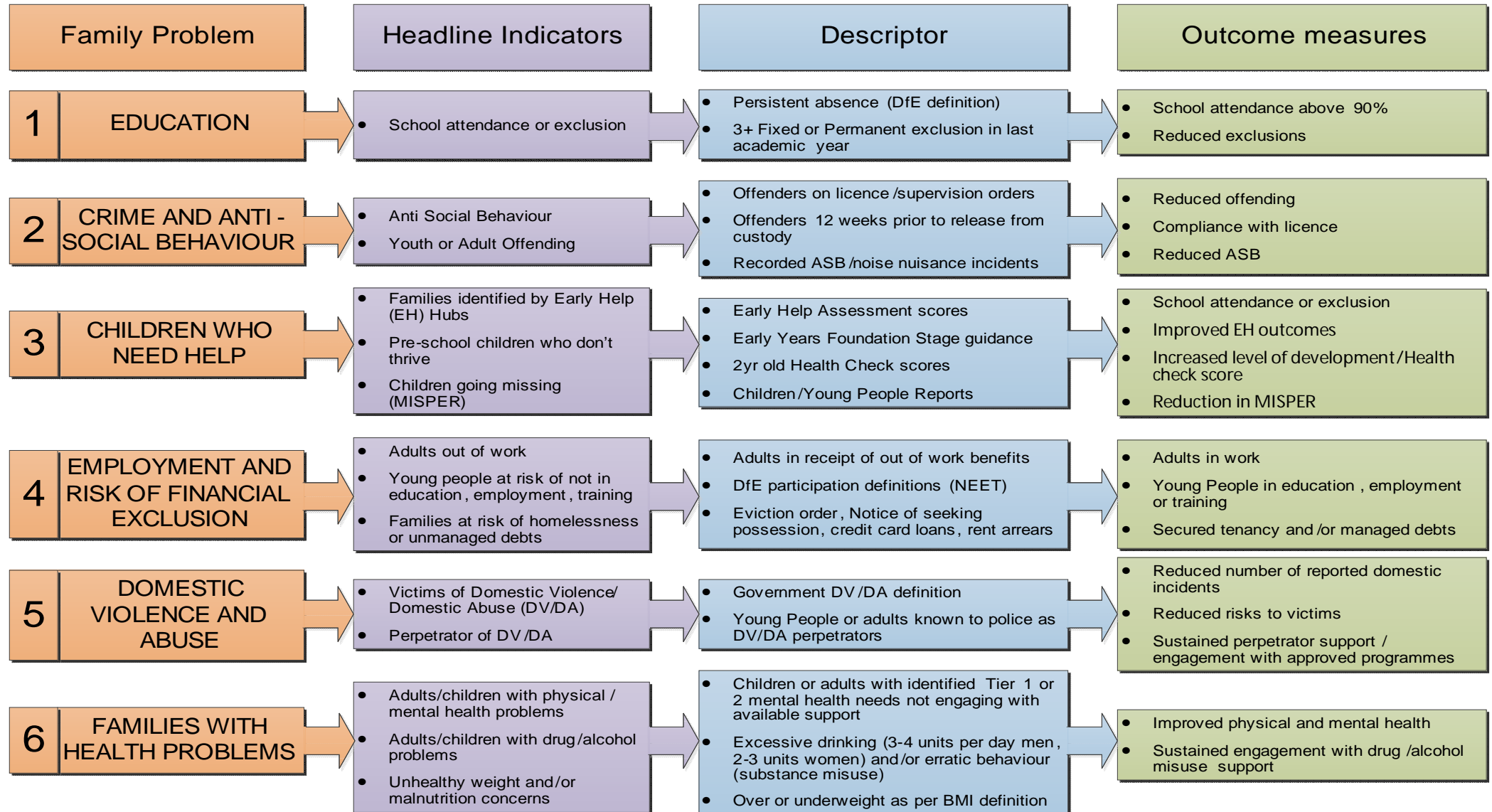


Hampshire Supporting (Troubled) Families Programme

Phase 2 – 1 January 2015

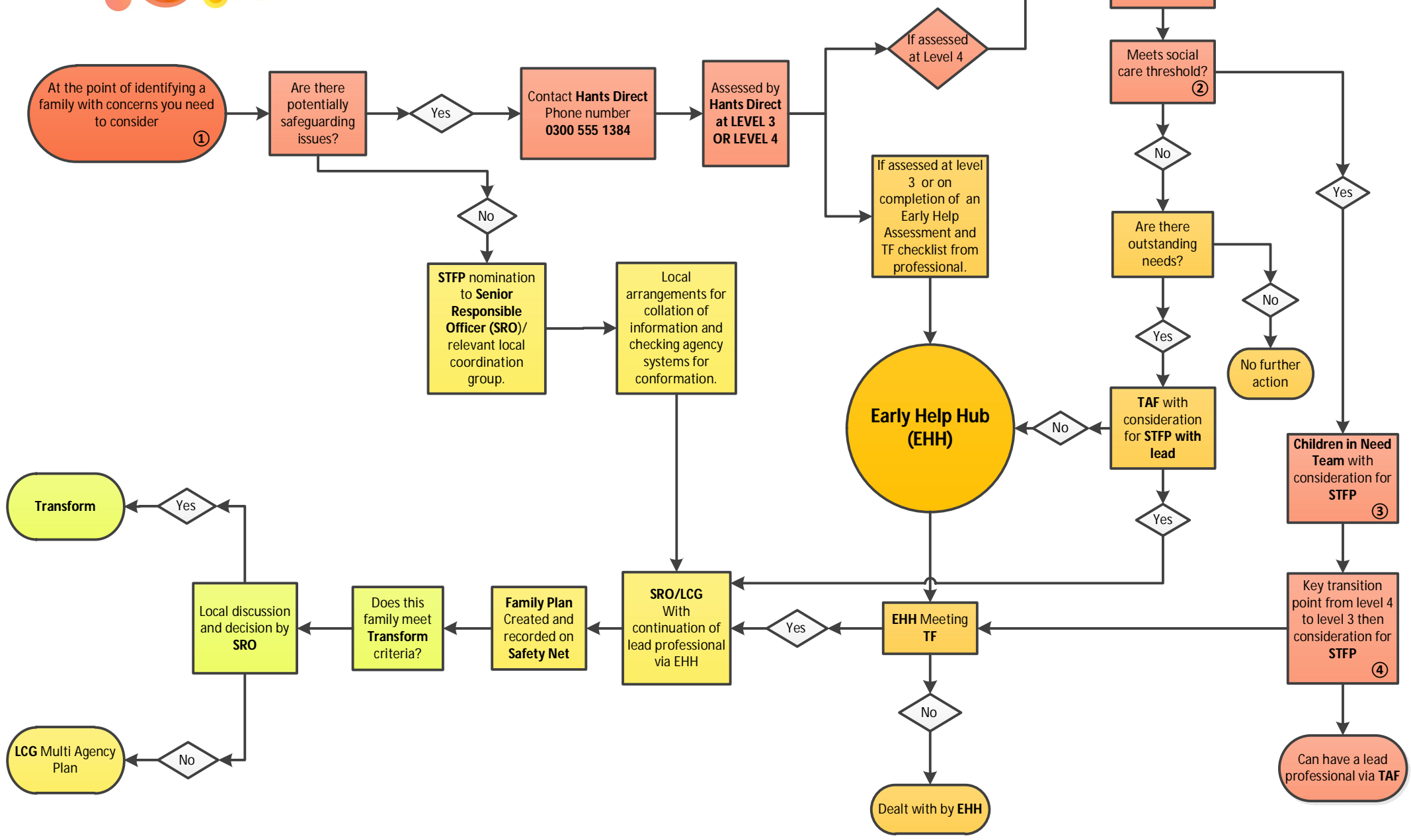


To be eligible for the programme, each family must have at least two of the above six family problems and a child under the age of 18.



STFP and Early Help Nomination Process

Additional guidance is available on the STFP website



Hampshire Supporting (Troubled) Families Programme Phase 2



	Detailed Headline Criteria	Detailed Success Measures
1	<p>EDUCATION - Households where a child:</p> <p>A) Has less than 90% school attendance for an average across the last 12 months. B) Has received at least 3 fixed term exclusions in the last 3 consecutive school terms; C) At primary school has had at least 5 school days of fixed term exclusion in the last 12 months; D) Of any age who has had at least 10 days of fixed term exclusion in the last 12 months E) Has been permanently excluded from school within the last 3 school terms; F) is in alternative educational provision for children with behavioural problems.</p>	<p>Households where a child:</p> <p>A) Has more than 90% school attendance for an average across the last 12 months B) Has received fewer than 3 fixed term exclusions in the last 3 consecutive school terms, or the child at primary school has missed fewer than 5 school days of school due to fixed term exclusions in the last 12 months; or the child of any age has missed fewer than 10 day of school due to fixed term exclusions in the last 12 months C) Has been attending mainstream school within and has had more than 90% attendance across the last 12 months. The child who is in alternative education provision for children with behavioural problems has had more than 90% attendance across the last 12 months</p>
2	<p>CRIME & ANTI SOCIAL BEHAVIOR - Households including:</p> <p>A) An adult or child with a recorded anti-social behaviour (ASB) incident in the last 12 months. B) A child who is known to YOT and has committed a proven offence in the previous 12 months. C) An adult prisoner who is less than 12 weeks from release date and will have parenting responsibilities on release. D) An adult who is currently subject to licence or supervision in the community, following release from prison, and has parenting responsibilities. E) An adult currently serving a community order, or suspended sentence who has parenting responsibilities.</p>	<p>Households where:</p> <p>A) At least a 60% reduction in ASB incidents in the last 6 months in comparison to the number of ASB incidents in the previous 6 months B) The number of substantive YOT outcomes for the child needs to be reduced by at least 33% in the last 6 months, in comparison to the previous 6 months. C) The adult is complying with his/her post release plan and has not reoffended in the last 6 months post release D-E) The adult is complying with their supervision/ licence/ community order and the overall offending in the last 6 months has been less than 33%, in comparison to their average level of proven offending in the previous six months.</p>
3	<p>CHILDREN WHO NEED HELP -Households where a child:</p> <p>A) Has been identified and assessed as needing early help. B) Is not taking up the free Early Years Education offer C) Has developmental delays identified at the 2 year old health check D) Does not achieve a Good Level of Development (GLD) and in particular does not achieve the expected or greater level of development in all Personal Social Emotional Development aspects E) Has been reported missing from home (MISPER)</p>	<p>Households where a child:</p> <p>A) Early help assessment outcomes show significant and sustained improvement over a six month period B) Is taking up the free Early Years Education offer for at least six months C) Developmental delays have significant improved over a six months period (e.g. evidenced in the health check scores) D) By the end of Yr1 internal school tracking indicates the child would have a achieved a GLD E) The number of times the child has been reported missing over a six month period has been reduced by at least 60% compared to the previous six months.</p>
4	<p>EMPLOYMENT & RISK OF FINACIAL EXCLUSION - Households where:</p> <p>A) An adult is in receipt of out of work benefits. B) A young person who is about to leave school, has no/ few qualifications and no planned education, training or employment. C) A young person is not in education, training or employment. D) The family received a warning letter for breach of tenancy E) The family member received a notice of Seeking Possession (NOSP) F) The family member received an eviction order G) The family is in rent arrears and/or has unmanaged debts (for example credit card loans, school meals)</p>	<p>Households where:</p> <p>A) The adult is in employment and has not been in receipt of out of work benefits for 13 weeks (Employment and Support Allowance, Income Support, Incapacity Benefit, Carers Allowance or Disablement Allowance) or 26 weeks (Job Seekers Allowance) B-C) The young person is in education, training or employment for 6 months. D) The family has complied with the tenancy conditions and no further breach of tenancy has occurred for at least six months E-F) Eviction has been prevented and the family member has complied with the tenancy conditions for at least six months. G) A debt management plan is in place and followed through by the family for at least six months</p>
5	<p>DOMESTIC VIOLENCE AND ABUSE - A household where:</p> <p>A) A young person or adult known to local services as having experienced domestic violence or abuse in the last 12 months B) A young person or adult known to the police as having perpetrated an incident of domestic violence or abuse in the last 12 months C) The household has been subject to a police call out for a domestic incident in the last 12 months</p>	<p>A household where:</p> <p>A) A 60% reduction in recorded/known domestic violent or abuse incidents over a six month period compared to the pervious six months (e.g. evidenced through DASH risk assessment) B) The perpetrator of domestic violence or abuse has engaged in a support programme and sustained the engagement over a six month period. C) A 60% reduction in recorded/known domestic or abuse incidents over a six month period compared to the previous six months</p>
6	<p>FAMILIES WITH HEALTH PROBLEMS - Households where:</p> <p>A) An adult with mental health problems who has parenting responsibilities or a child with mental health problems B) An adult with parenting responsibilities or a child with a drug or alcohol problem. C) A child or an adult is affected by excess weight (overweight, obesity) D) A child or an adult is affected by malnutrition</p>	<p>Households where:</p> <p>A) The Child or adult is receiving (and engaging with) support and there has been a sustained improvement in physical health and wellbeing over a six months period. B) The child or adult is positively engaging with the treatment for drug or alcohol abuse over a six month period. C) The child completed a MEND programme and /or made an appropriate behaviour change, The adult achieved the set 12 week weight loss D) The Child or adult is positively engaging with the support over a six month period and /or made appropriate behaviour changes</p>