

# STANMORE; A NEW ESTATE...

C A



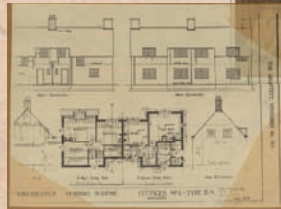
School Photo 1927  
Recreation ground



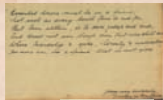
Football team 1929



Image courtesy of Hampshire Chronicle



Architect plans for first houses



Stanmore School 1928



1937

Start of WWII 1939

1941

German plane crashed on Catherine Hill

War time

1922

1923

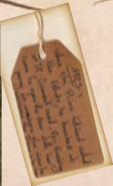
1921

20's

30's

1937

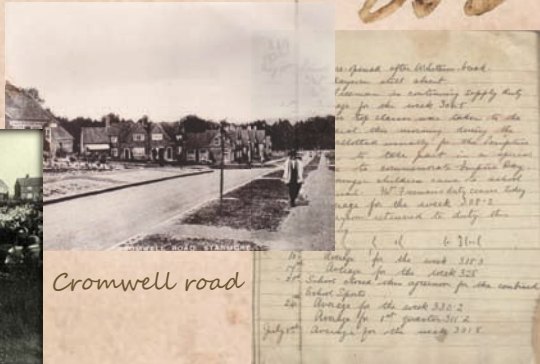
Early 1939  
Bi-plane crashed on Somers' close



Lower Stanmore



St Catherine's Hill June 1935  
a favorite playground for Stanmore children.



Cromwell road



Empire Day was celebrated every year. It has now been changed to Commonwealth Day as the former countries of the British Empire are now independent states. Most of them still choose to regard our Queen as an important figure.

...or could it have been a Proctor that crashed on Stanmore Lane in 1940?

