

CHESIL LODGE

ASSISTED
LIVING
IN WINCHESTER

Available to rent

An **extra care community** featuring **one and two bedroom apartments** exclusively for **over 55s**.
Available for affordable rent through Hampshire Home Choice



CHESIL LODGE



Computer generated image of Chesil Lodge

CHESIL LODGE is an extra care community being developed by Winchester City Council

A NEW LEASE OF LIFE IN WINCHESTER...

Chesil Lodge is a brand new extra care scheme located in the centre of one of England's oldest and most beautiful cities.

Exclusively for residents over the age of 55, Chesil Lodge provides the best of both worlds; the privacy and independence of your own one or two-bedroom apartment, and care on-site.

To be suitable for Chesil Lodge, potential residents must have an eligible care need assessed by Hampshire County Council Adult Services.

To learn more about being eligible for Chesil Lodge, please read the eligibility criteria on page 6 of this brochure.

Chesil Lodge is the ideal place to downsize to from a larger family home or to simply feel the security and companionship of becoming part of a close community with similar needs.





LIFE AT CHESIL LODGE

Aside from your own private kitchen, living room, bathroom and bedrooms, one of the many benefits of living at Chesil Lodge is enjoying the shared facilities and community spirit that permeates throughout.

Living at Chesil Lodge is all about keeping one's independence whilst knowing help is at hand when needed.

COMMUNAL HUB

The bustling restaurant and café on the ground floor form the heart of Chesil Lodge. Spacious lounges, quiet rooms and hobby areas with large 'circulation' zones offer a plethora of places to socialise, dine and relax with fellow residents. Apartments are connected by wide, bright corridors and there are also meeting spaces for residents to enjoy.

ACTIVITIES

Choose to take part in a wide range of different leisure activities, on a regular basis. The activities schedule changes regularly and suggestions from residents are always welcome.

OUTSIDE SPACE

Take time out on your own private balcony with a book or enjoy a stroll through the landscaped gardens to the north with new friends, or just relax in the sunken garden to the south. Sunny afternoons are well spent admiring the far-reaching views over Winchester from the roof terrace.

THE SALON

Pamper yourself without even leaving the building! Take advantage of the on-site hairdressing service and other luxurious treatments.



DAY CARE FACILITY

Chesil Lodge incorporates a day centre available to local elderly residents and their families who are already supported by Hampshire County Council. Rooms can be used by Chesil Lodge residents in the evenings and weekends when the centre is closed.

GUEST SUITE

With its own kitchenette, and en-suite bedroom, it can be hired for use by visiting family members or friends, for a nominal cost, for up to a week's duration.

CONFIDENCE IN CARE

The registered care provider at Chesil Lodge has been appointed by Hampshire County Council. Their service is regulated and approved by the Care Quality Commission. Care staff will be on site 24 hours a day, to deliver care during the day and at night if required, whether it is planned care or in answer to an emergency.



SHOP WITH CONFIDENCE

In association with Mind, Winchester is also the first city in Hampshire to launch a 'Dementia Friendly' high street initiative.

Shoppers can now be reassured they will be met with understanding and support in businesses and stores which display the 'dementia friendly' sticker in their window.



AM I ELIGIBLE TO MOVE INTO EXTRA CARE HOUSING?

The accommodation at Chesil Lodge is available to anyone who complies with the following:

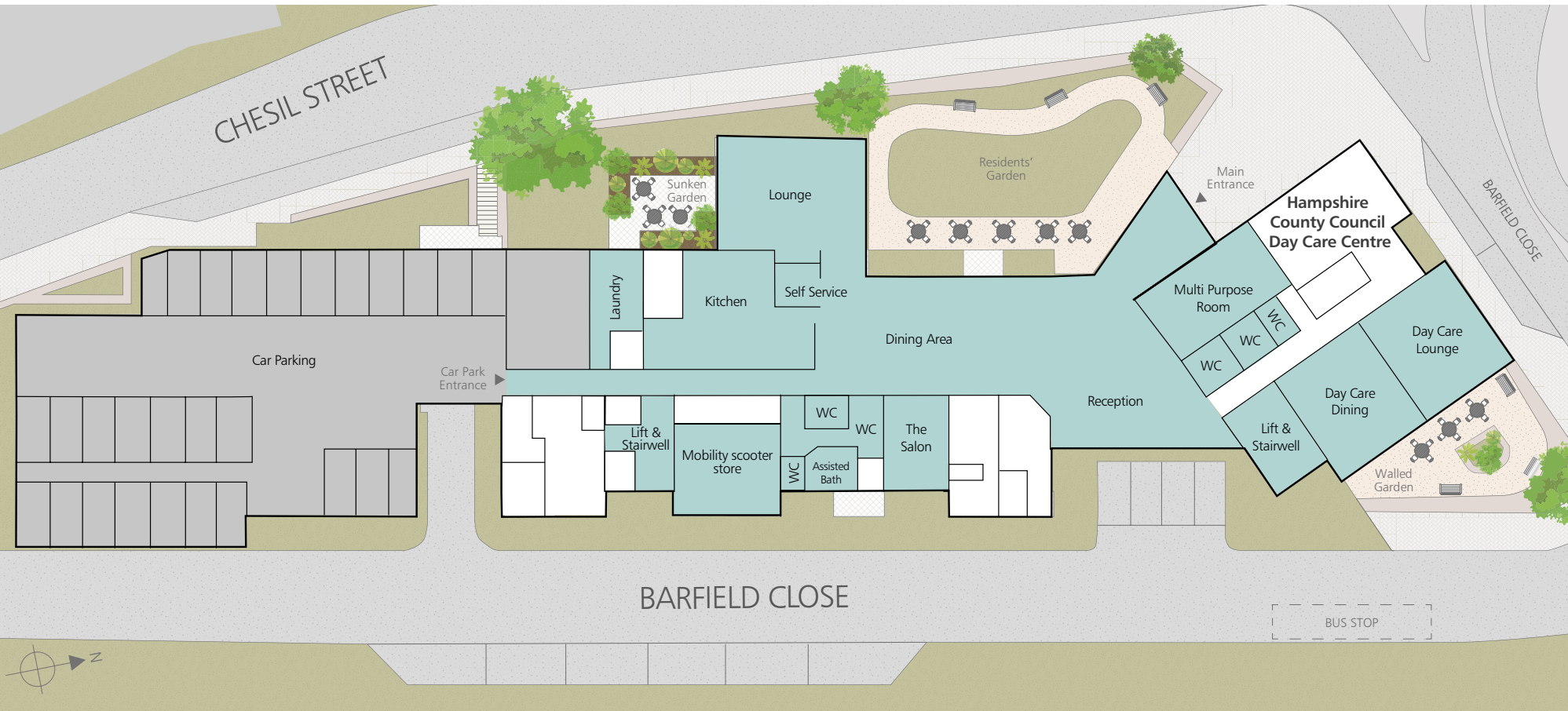
- You need to be 55 years or older and live in the Winchester City Council district, or have family in the area and are eligible for housing through Hampshire Home Choice
- You are currently living in housing which is no longer suitable and need help with personal care
- You have had a needs assessment carried out by Hampshire County Council and meet the eligibility criteria.

People looking to move into an Extra Care scheme will need at least some degree of eligible care need, and be known to both Hampshire County Council's Adult Services and Winchester City Council's Housing Departments.



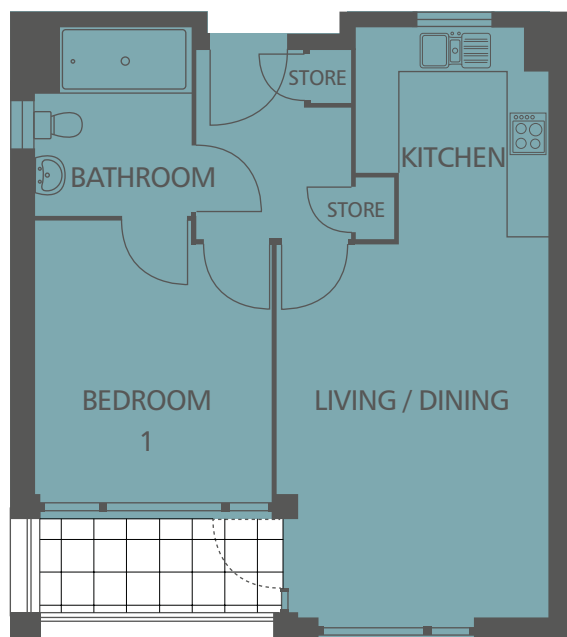
THE COMMUNITY AREAS OF CHESIL LODGE

SITE PLAN



TYPICAL ONE AND TWO BEDROOM APARTMENTS

There are a number of apartment layouts within Chesil Lodge. Allocations will be made according to an assessment of your needs. For guidance, here are a typical one and two bedroom plan designed to show you proportions of rooms and guide dimensions.



ONE BEDROOM APARTMENTS

Living / Dining	5.73m x 3.80m	18'9" x 12'5"
Kitchen	2.96m x 2.75m	9'8" x 9'0"
Bedroom 1	4.10m x 3.59m	13'5" x 11'9"



TWO BEDROOM APARTMENTS

Living / Dining	5.96m x 3.52m	19'5" x 11'5"
Kitchen	3.52m x 2.61m	11'5" x 8'5"
Bedroom 1	4.05m x 3.37m	13'3" x 11'08"
Bedroom 2	3.15m x 2.83m	10'3" x 9'2"

APARTMENT FEATURES

CHESIL
LODGE

KITCHENS

- Howdens Kitchen with ceramic hob, extractor hood and oven
- Under-pelmet lighting and recessed spotlights to kitchen
- Space for washing machine and fridge/freezer
- Polyflor Polysafe American Oak wood-effect flooring
- White ceramic wall tiling

BATHROOMS

- Level access wet-room
- Retrofit capability for ceiling hoists and grab rails
- Polyflor Polysafe flooring
- White ceramic wall tiling

BEDROOMS

- Retrofit capability for ceiling hoists and grab rails in main bedroom

GENERAL FEATURES

- Aerial points for FM / digital / ability to pick up Sky and Freeview to lounge and main bedroom
- Residents wifi available
- Ash-veneer internal doors
- Space in each apartment lobby for internal mobility scooter, plus ground floor mobility scooter parking and charge point
- Increased sound insulation
- Secure door entry system
- Level access private balcony, some with city views
- Lifts to all floors
- Wheelchair accessible
- Small pets permitted*
- Parking options available
- HAPPI** standards adhered to
- Alarm equipment in each apartment for contacting care staff

* Pets are permitted subject to permission from Winchester City Council.

**Housing our Ageing Population: Panel for Innovation

LOCATION

ON FOOT

Chesil Lodge is within a five-minute walk to the south of Winchester city centre, using the new pedestrian and mobility scooter-friendly pathways which link into existing accessible routes.

BY BUS

Chesil Lodge is directly on the Park & Ride bus route which runs between the city centre, railway station and hospital. The journey takes approximately five minutes to reach Jewry Street. Concessionary bus pass holders can travel for free after 9.30am.

BY ROAD*

A31 junction 9	0.8 miles
M3 junction 10	1.5 miles
Eastleigh	8.5 miles (14 minutes)
Southampton	12 miles (21 minutes)
Basingstoke	21.5 miles (30 minutes)

BY TRAIN**

Southampton	16 minutes
Woking	31 minutes
Bournemouth	47 minutes
London Waterloo	58 minutes



CHESIL LODGE
CHESIL STREET
WINCHESTER
SO23 0HU



*journey times are approximate only from www.googlemaps.co.uk

** journey times are approximate only from www.thetrainline.com



On Chesil Lodge's doorstep –
Winchester, a beautiful place to live

CHESIL
LODGE

CHESIL LODGE



FOR MORE INFORMATION VISIT

www.winchester.gov.uk

CALL 01962 845 335

EMAIL shelteredhousing@winchester.gov.uk

Misrepresentation Act (1967): The details within this brochure have been carefully prepared. They are believed to be correct, neither the acting agents or Winchester City Council guarantee their accuracy and these details are not intended to form part of any contract. **Finance Act (1991):** All prices quoted exclude VAT unless otherwise stated. Any intending purchaser or lessee, must satisfy themselves independently as to the incidence of VAT in respect of any transaction. **Property Misdescriptions Act (1991):** These details are believed to be correct at the time of print. Winchester City Council reserve the right to make variations, as the building works progress these could be required. All room dimensions are approximate and may vary, please do not rely on them for furnishings. Winchester City Council reserve the right to make variations in the tenure at any time. All royalty free stock photography and respective ownerships acknowledged. **Image credits:** Page 6 (street in Winchester) - Angus Kirk, Flickr. Page 11 (street and bridge in Winchester) - Javaid Akhtar 2016.