

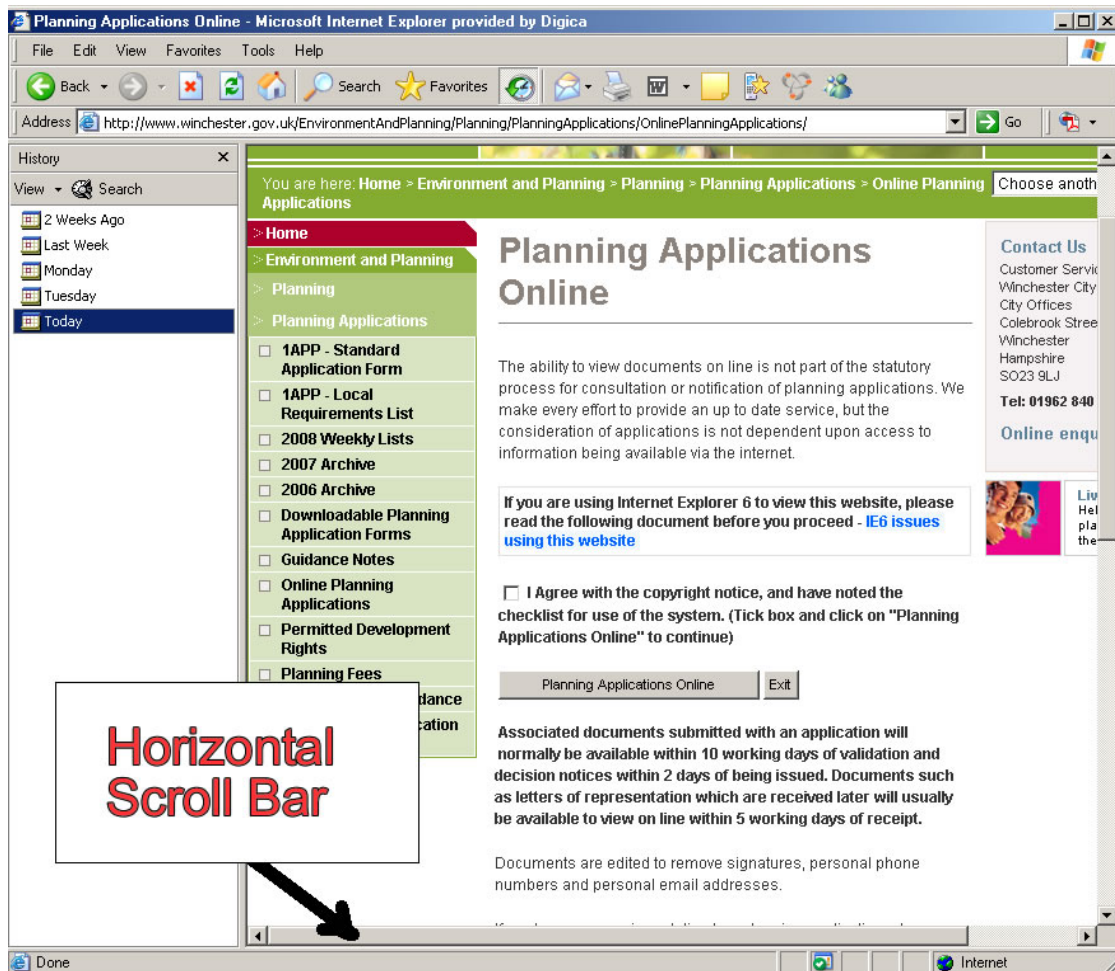
Compatibility issues when viewing Planning Applications online using IE6

It has come to our attention that there are some compatibility issues when viewing the planning website using Internet Explorer Version 6:

Screen size and horizontal scroll bar 'locking' the website

The first issue is that you must be viewing the site in either a full window or without a horizontal scroll bar appearing in the window.

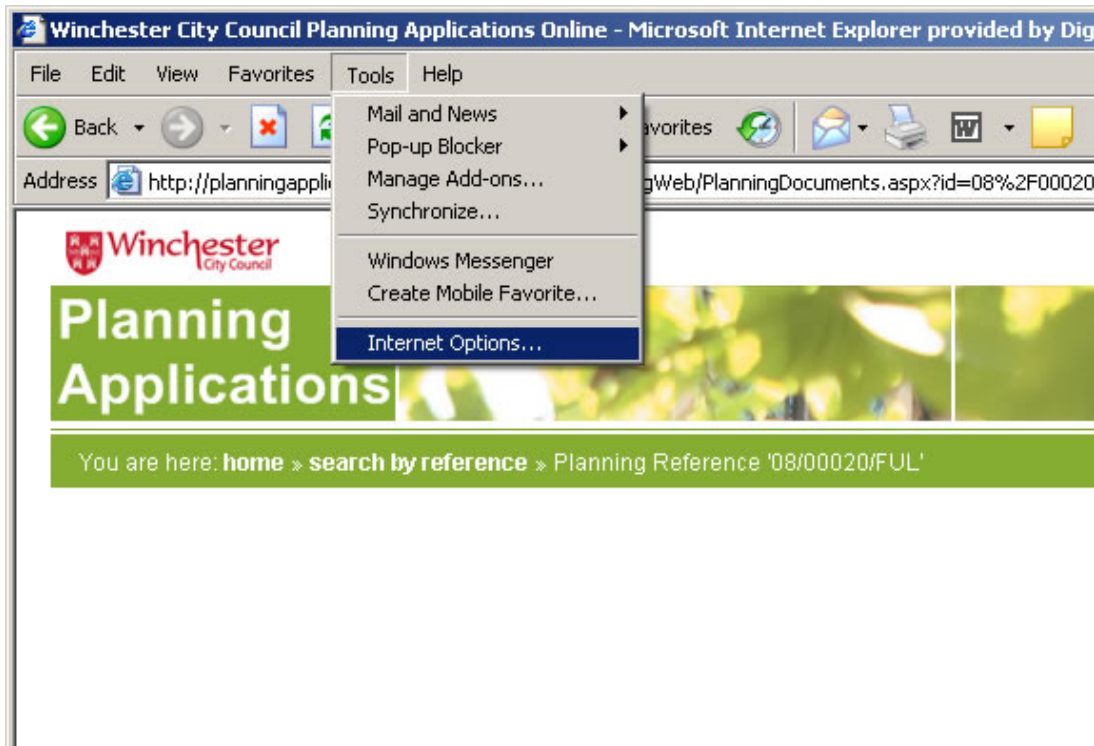
The image below shows the horizontal scroll bar which will currently affect the usability of the site. To remove the horizontal scroll, simply increase the width of the window (or close the history/favourites from the view). Once the scroll bar is no longer there, please proceed to use the site.



Blank screen when trying to view 'Associated Documents'

The second issue arises when viewing Associated Documents from the Progress Tracker Screen.

When you click the button "Associated Documents" you may find that a blank screen appears. If this happens in order to complete the search you need to click on Tools > Internet Options > OK. This will then refresh the page and the documents will appear. See image below.



This only happens for searches on some applications, the majority work correctly.

We are currently working on a solution for this problem and hope to have it fixed soon.

If you experience any other problems, please email webmaster@winchester.gov.uk